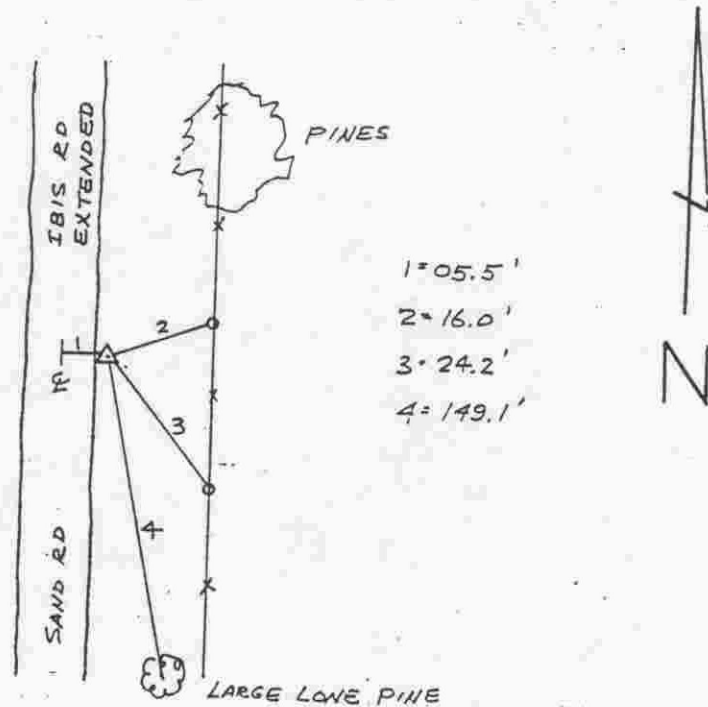
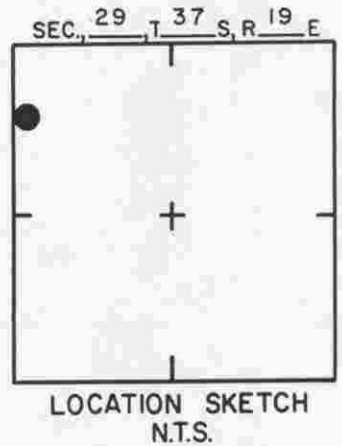
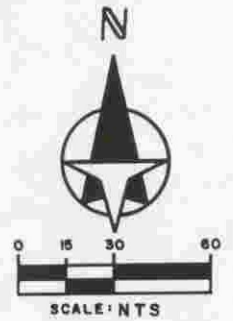


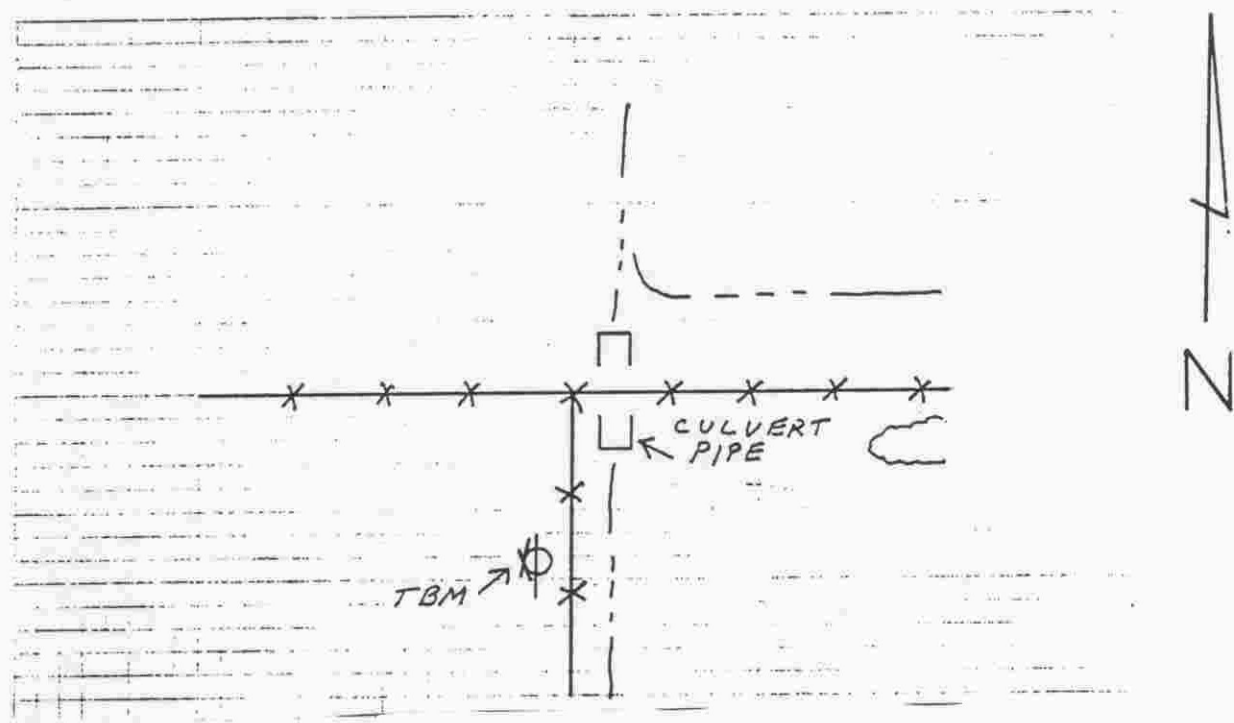
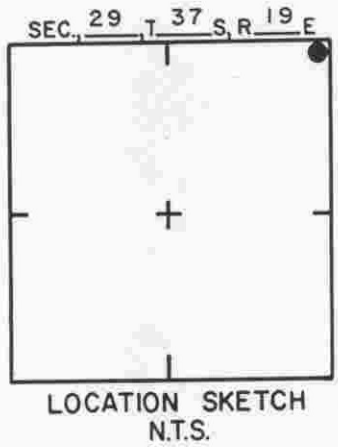
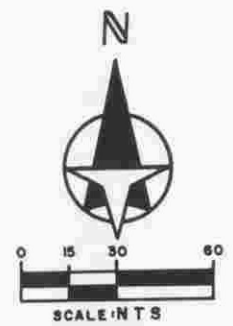
TO REACH THE MARK FROM THE INTERS HAWKINS RD & IBIS AVE, GO ±
 1.85 MILES S. TO STA ON THE LEFT. STA IS A RE-BAR
 SET FLUSH WITH GROUND.



<p>SARASOTA COUNTY TRANSPORTATION DEPARTMENT ENGINEERING DIVISION</p>		ELEV.
		21,84'
<p>BENCH MARK DATA SHEET</p>		BM. NO.
DATE DRAWN: 2-6-87	BY: RJJ	307
REF: SWFWMD GWL-12	DATE: 10/80	
<p>ELEV. BASED ON B.M. NO. DOT</p>		

DATE	TYPE	FB. PG.	BY
REVISIONS			

TO REACH THE MARK FROM AT N/E COR SEC 29;
 TBM IS 60 D NAIL IN W. FACE P-POLE.



SARASOTA COUNTY
 TRANSPORTATION DEPARTMENT
 ENGINEERING DIVISION

**BENCH MARK
 DATA SHEET**

ELEV.
 21.66'
 BM. NO.
 307A

DATE DRAWN: 2-10-87 BY: RJJ

REF: SWFWMD GWL 131 DATE 11/80

ELEV. BASED ON B.M. NO. NOS

DATE	TYPE	FB. PG.	BY
REVISIONS			