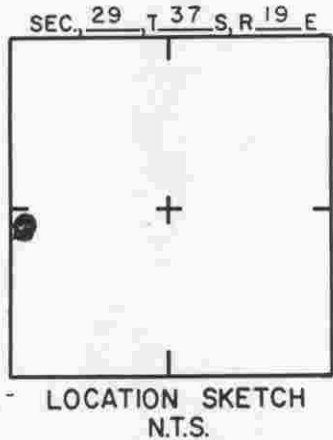
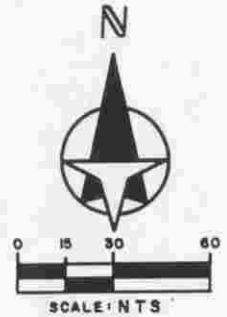
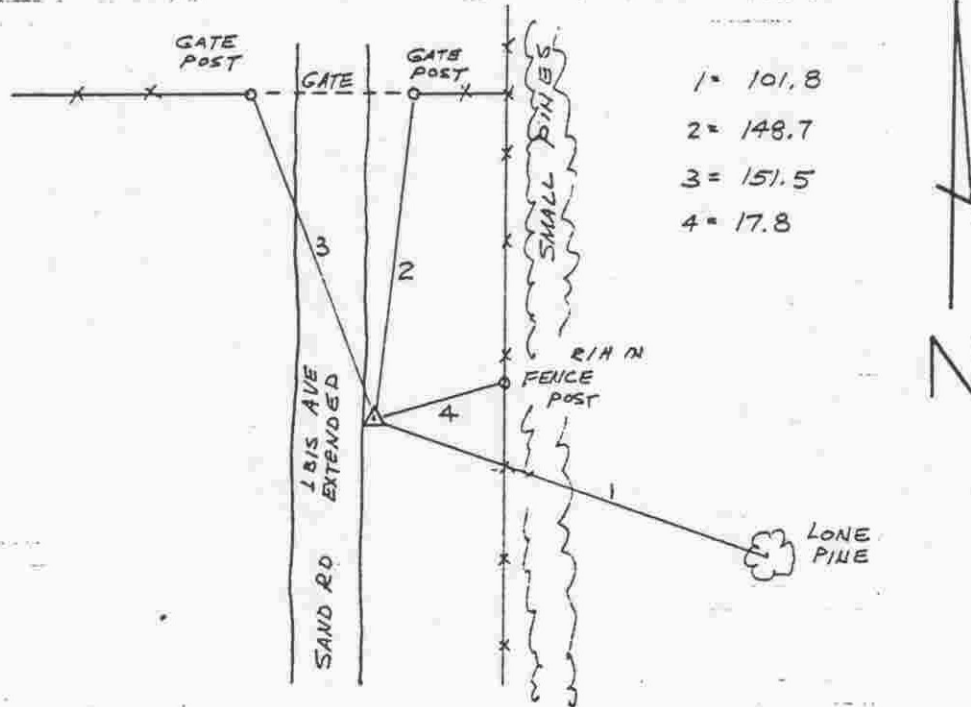


TO REACH THE MARK FROM THE INTERS OF HAWKINS RD & IRIS AVE GO
 ± 2.05 MILES TO STA ON THE LEFT. STA 15A RE-BAR SET
 FLUSH WITH GROUND.



SARASOTA COUNTY
 TRANSPORTATION DEPARTMENT
 ENGINEERING DIVISION

BENCH MARK
 DATA SHEET

ELEV.

21,24'

BM. NO.

308

DATE DRAWN: 2-6-87 BY: RJJ

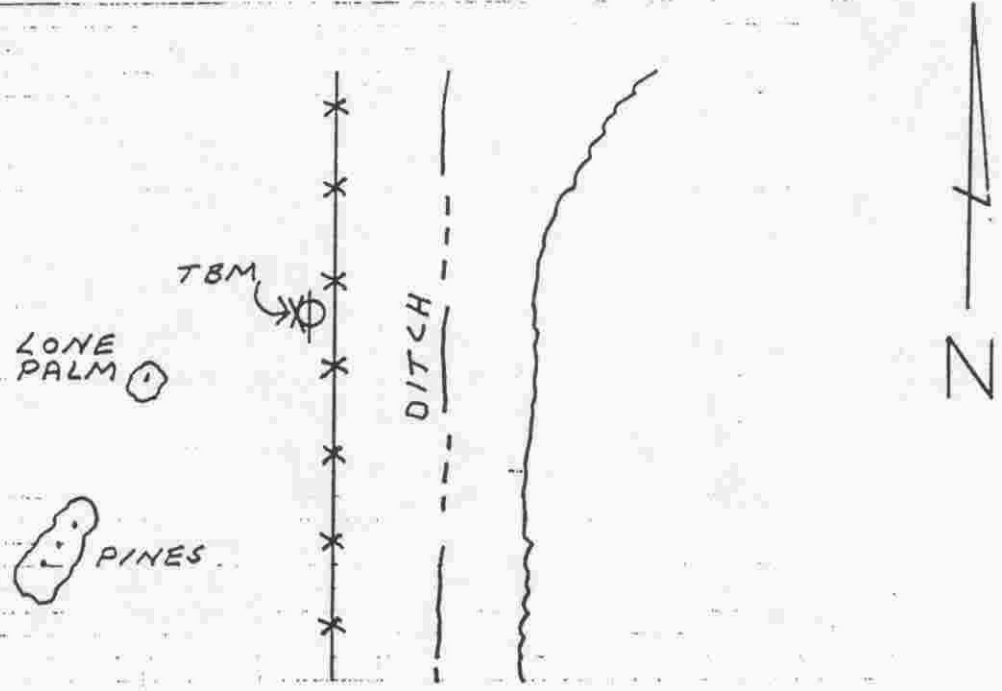
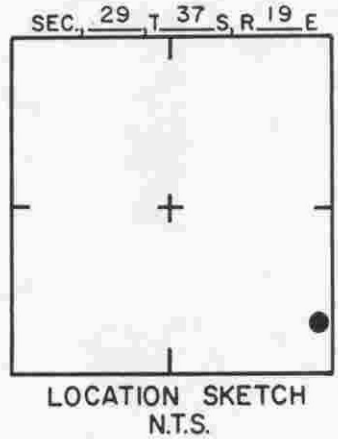
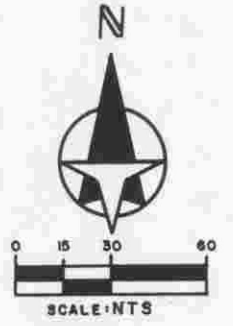
REF: SWFWMD GWL-13 DATE: 10/80

ELEV. BASED ON B.M. NO. DOT

DATE	TYPE	FB. PG.	BY
REVISIONS			

REVISIONS

TO REACH THE MARK FROM SE COR SEC 29;
 GO NORTH I 700' ALONG WEST EDGE OF SEC
 TO TBM. TBM IS 50 0 NAIL W. FACE
 P-PILE



SARASOTA COUNTY
 TRANSPORTATION DEPARTMENT
 ENGINEERING DIVISION

**BENCH MARK
 DATA SHEET**

ELEV.

21.14'

BM. NO.

308A

DATE DRAWN: 2-10-87 BY: RJJ
 REF: SWFWMD GWL 132 DATE 11/80

ELEV. BASED ON BM. NO. NOS

DATE	TYPE	FB. PG.	BY
------	------	---------	----

REVISIONS