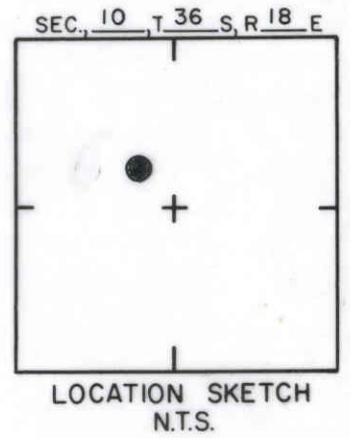
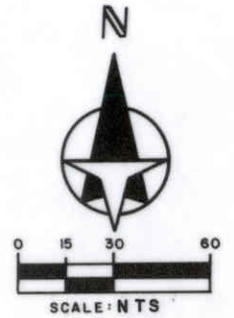
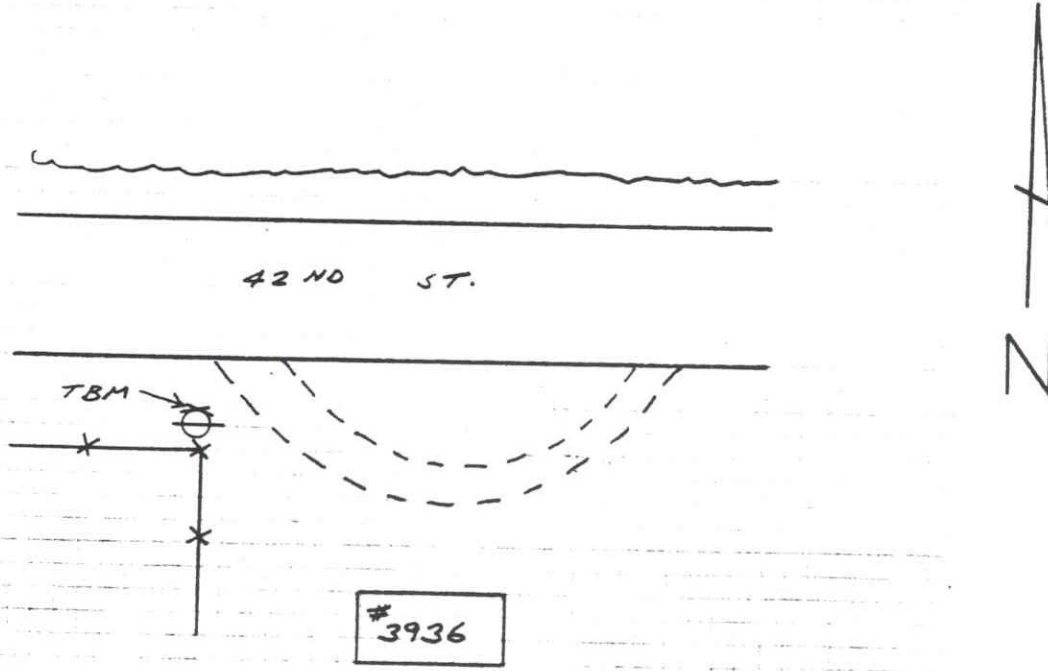


THE MINKS				SARASOTA COUNTY TRANSPORTATION DEPARTMENT ENGINEERING DIVISION	
				BENCH MARK DATA SHEET	
DATE				DATE DRAWN: 10-25-85	BY: WFW
TYPE				REF: P.B. 28	PG. 44 A
FB. PG.				DATE	
BY				ELEV. BASED ON B.M. NO. 31A	
REVISIONS				31C	

TO REACH THE MARK FROM INTER. 42 ND ST. & MINK RD.
 GO \pm 0.20 MI. E., TBM IS A RAILROAD SPIKE IN
 N. SIDE OF P-POLE



SARASOTA COUNTY
 TRANSPORTATION DEPARTMENT
 ENGINEERING DIVISION

BENCH MARK
 DATA SHEET

ELEV.
 33,55'
 BM. NO.
 31D

DATE DRAWN: 1-22-87 BY: RJJ

REF: SWFWMD HFH 118 DATE 10/81

ELEV. BASED ON B.M. NO. NOS

DATE	TYPE	FB. PG.	BY
REVISIONS			



WESTERLY LINE OF PREMISES DESCRIBED IN QUIT-CLAIM DEED DATED JAN. 17, 1983 BY BERTA HAURI TO TAYLOR WOODROY HOMES FLORIDA, INC. RECORDED IN O.R. 1562, P. 0373.

B.M. ELEV. 35.87
TOP OF CONC. MON.

P.R.M. SET
OFFSET 1' NO

N 01° 00' 40" E 559.33' (OVERALL)

THIS PLAT

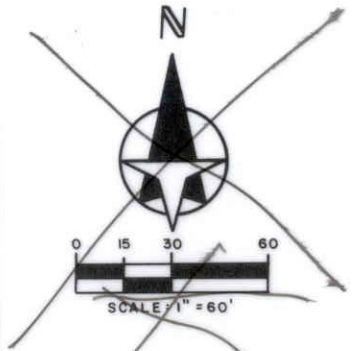
HAURI ROAD

N 01° 00' 40" E 1570.40'

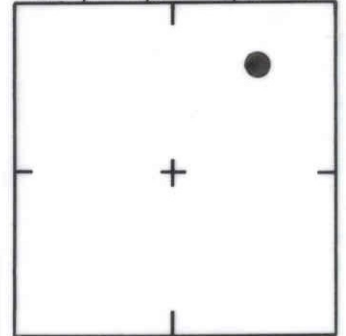
WESTERLY LINE OF THE EAST HALF OF THE N.E. 1/4 OF SEC. 10, T. 36 S., R. 18 E.

42ND STREET

NOT SL



SEC. 10, T. 36 S., R. 18 E



LOCATION SKETCH
N.T.S.

SARASOTA COUNTY
TRANSPORTATION DEPARTMENT
ENGINEERING DIVISION

**BENCH MARK
DATA SHEET**

ELEV.

35.87'

BM. NO.

31E

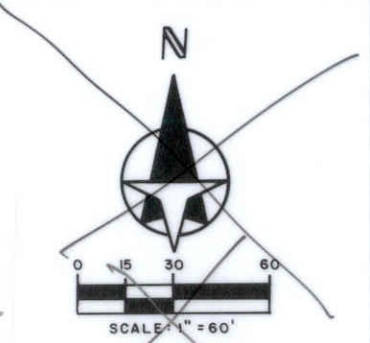
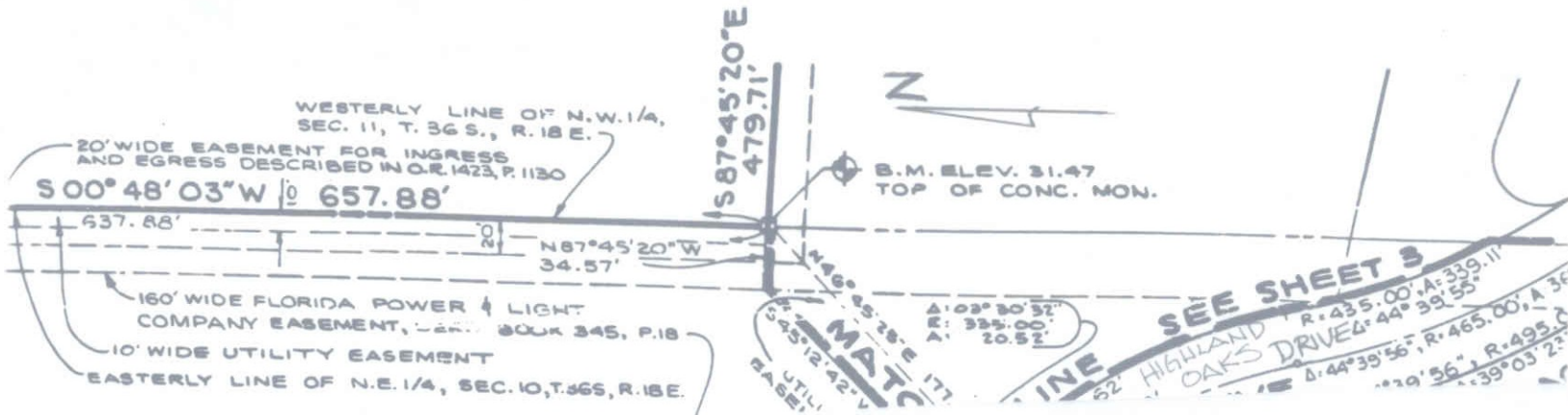
DATE DRAWN: 7 - 8 - 87 BY: BAG

REF: F.B. PG. DATE

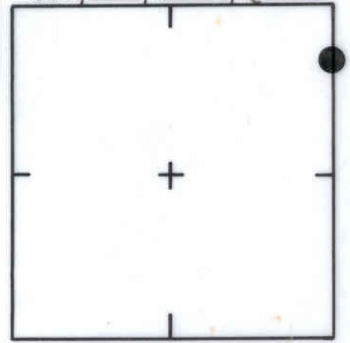
ELEV. BASED ON B.M. NO.

DATE	TYPE	F.B. PG.	BY
REVISIONS			

REVISIONS



SEC. 10, T. 36 S., R. 18 E.



LOCATION SKETCH
N.T.S.

SARASOTA COUNTY
TRANSPORTATION DEPARTMENT
ENGINEERING DIVISION

				BENCH MARK DATA SHEET		ELEV.
						31.47'
REVISIONS				DATE DRAWN: 7-8-87	BY: BAG	BM. NO.
				REF: F.B.	PG.	DATE
				ELEV. BASED ON B.M. NO.		

OUTSIDE BOUNDARY OF SAID SITE SHALL BE SUBJECT TO THE LOT LINE EASEMENTS.

MY COMMISSION EXPIRES Feb. 21, 1980

Norm D. Hunt
NOTARY PUBLIC, STATE OF FLORIDA AT LARGE.

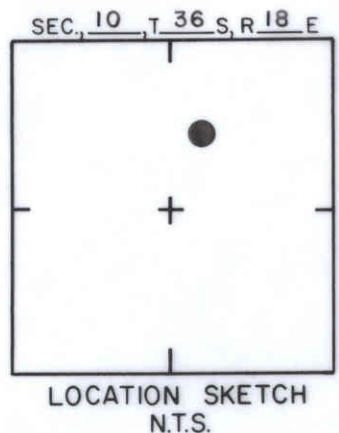
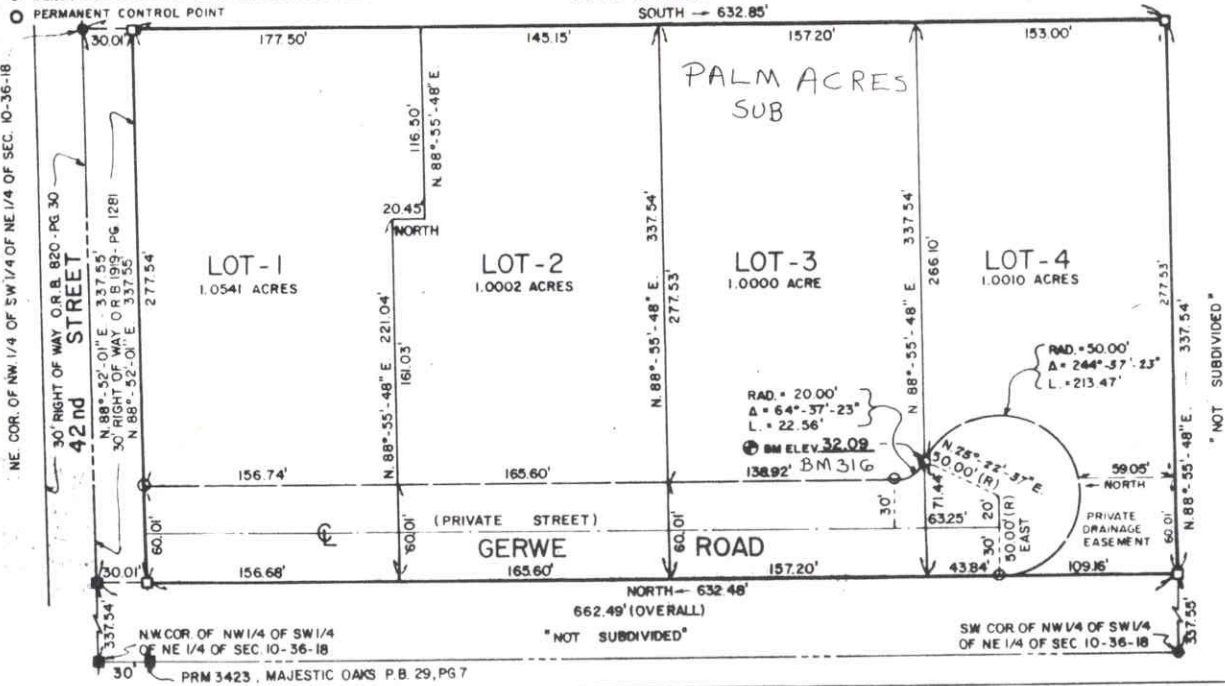
NOTES

BEARINGS SHOWN REFER TO AN ASSUMED MERIDIAN

- IRON PIPE FOUND
- CONCRETE MONUMENT FOUND
- PERMANENT REFERENCE MONUMENT SET
- ⊙ BENCH MARK ELEVATION BASED ON N.G.V.D. 1929 (CO. BM NO. 31 ELEV. 35.91)
- PERMANENT CONTROL POINT

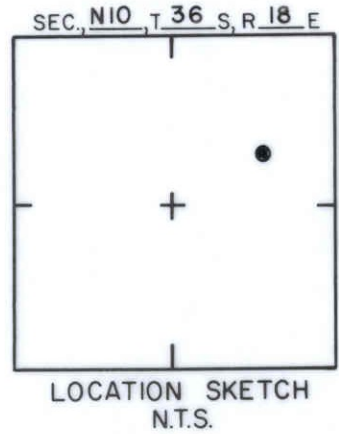
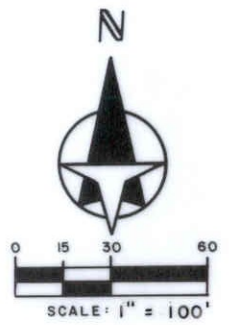
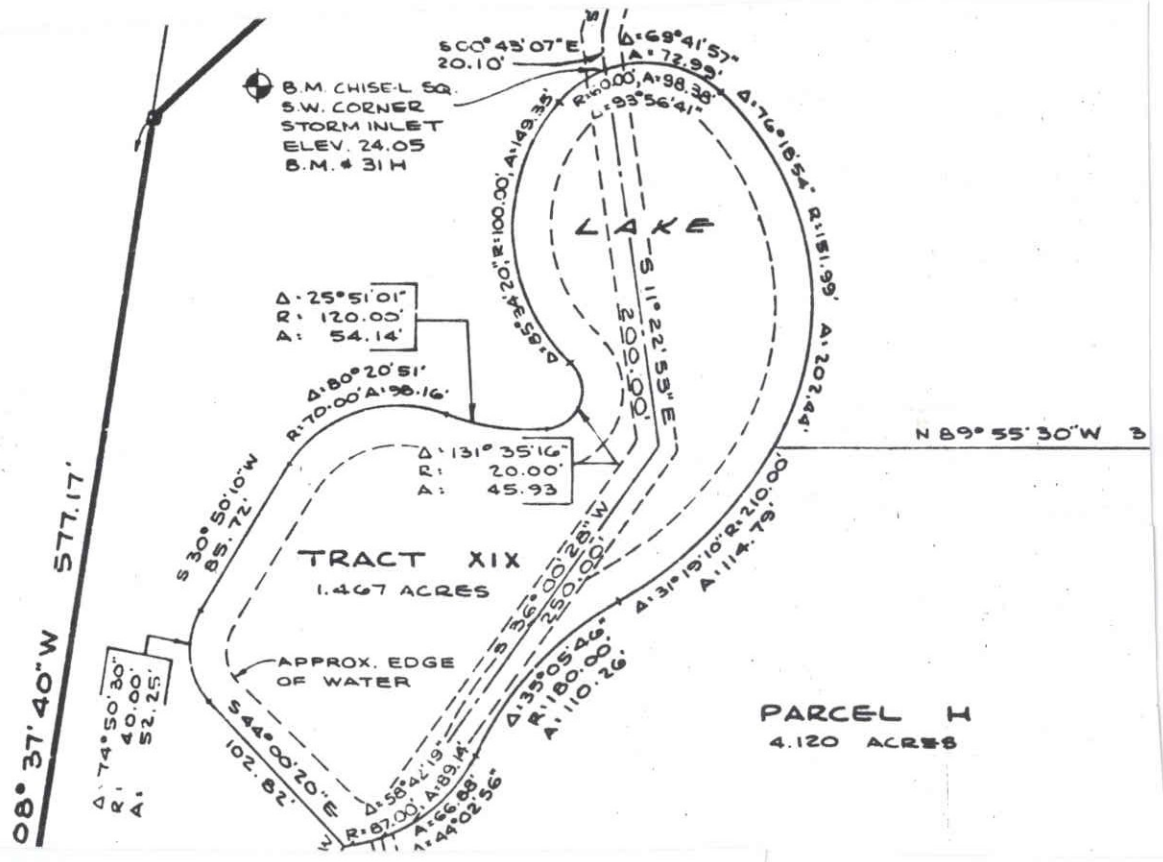


PB 32 PG. 3



SARASOTA COUNTY TRANSPORTATION DEPARTMENT ENGINEERING DIVISION			
BENCH MARK DATA SHEET			ELEV. 32.09'
DATE DRAWN: 7-19-88		BY: RJJ	
REF: FB.		PG. DATE	
ELEV. BASED ON B.M. NO.			31G

DATE	TYPE	FB. PG.	BY
REVISIONS			



THE HIGHLANDS UNIT 4

SARASOTA COUNTY TRANSPORTATION DEPARTMENT ENGINEERING DIVISION			
BENCH MARK DATA SHEET			ELEV. 24.05
DATE DRAWN: 5/27/88 BY: SCB			BM. NO.
DATE	TYPE	F.B. PG.	BY
REF: PB 32 PG. 28			DATE
REVISIONS			31H
ELEV. BASED ON B.M. NO. USC & GS B93			