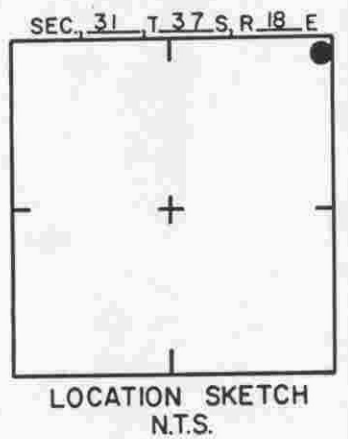
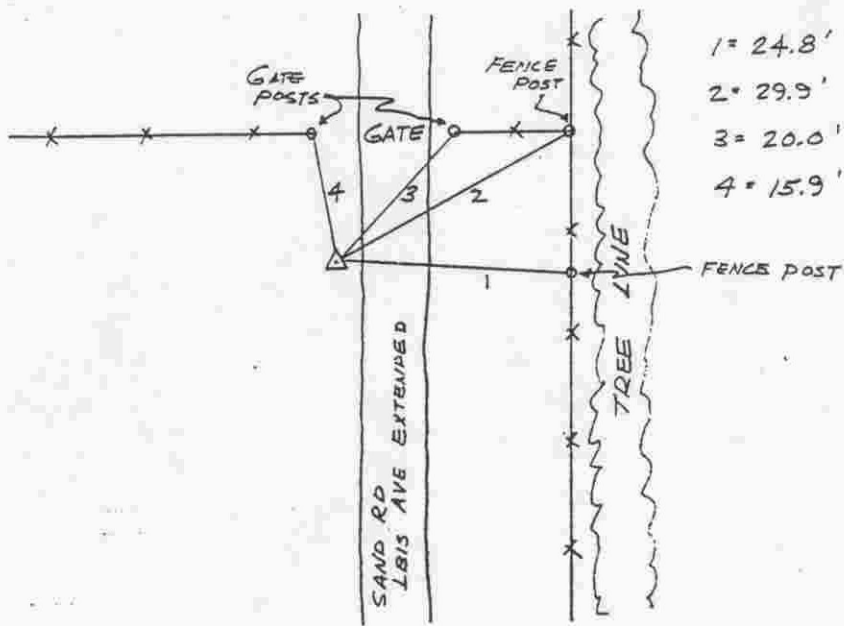
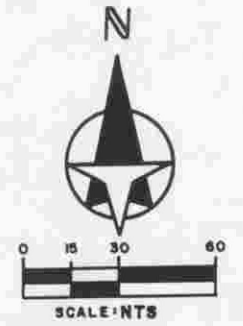


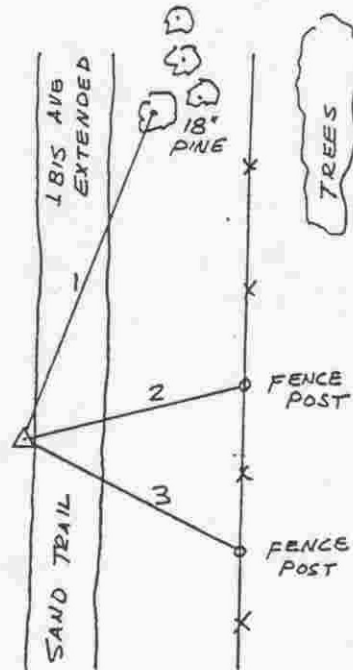
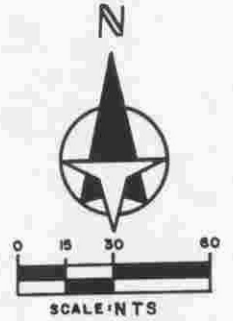
TO REACH THE MARK FROM THE INTERS HAWKINS RD & LBIS AVE GO
 ± 2.50 MILES SOUTH TO THE STA. ON THE RIGHT. STA
 IS A RE-BAR SET FLUSH WITH GROUND.



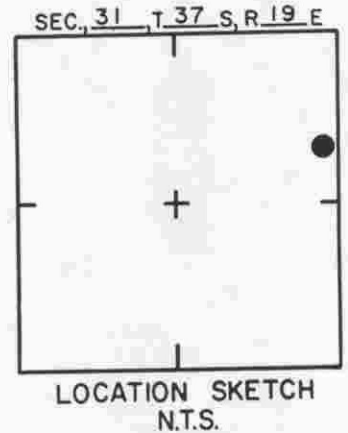
SARASOTA COUNTY TRANSPORTATION DEPARTMENT ENGINEERING DIVISION			
BENCH MARK DATA SHEET			ELEV. 19.83'
DATE DRAWN: 2-6-87		BY: RJJ	
REF: SWFWMD GWL-14		DATE 10/87	
ELEV. BASED ON B.M. NO. DOT			311

DATE	TYPE	FB. PG.	BY
REVISIONS			

TO REACH THE MARK FROM THE INTERS HAWKINS RD & LBIS AVE GO ±
 2.80 MILES S. TO STA ON THE RIGHT. STA IS A RE-BAR
 SET FLUSH WITH GROUND.



1 = 64.3'
 2 = 32.8'
 3 = 34.1'



SARASOTA COUNTY
 TRANSPORTATION DEPARTMENT
 ENGINEERING DIVISION

**BENCH MARK
 DATA SHEET**

ELEV.

19.44'

BM. NO.

311A

DATE DRAWN: 2-6-87 BY: R J J
 REF: SWFWMD GWL-15 DATE 10/80

ELEV. BASED ON B.M. NO. DOT

DATE	TYPE	FB. PG.	BY
REVISIONS			