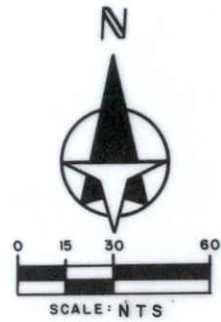
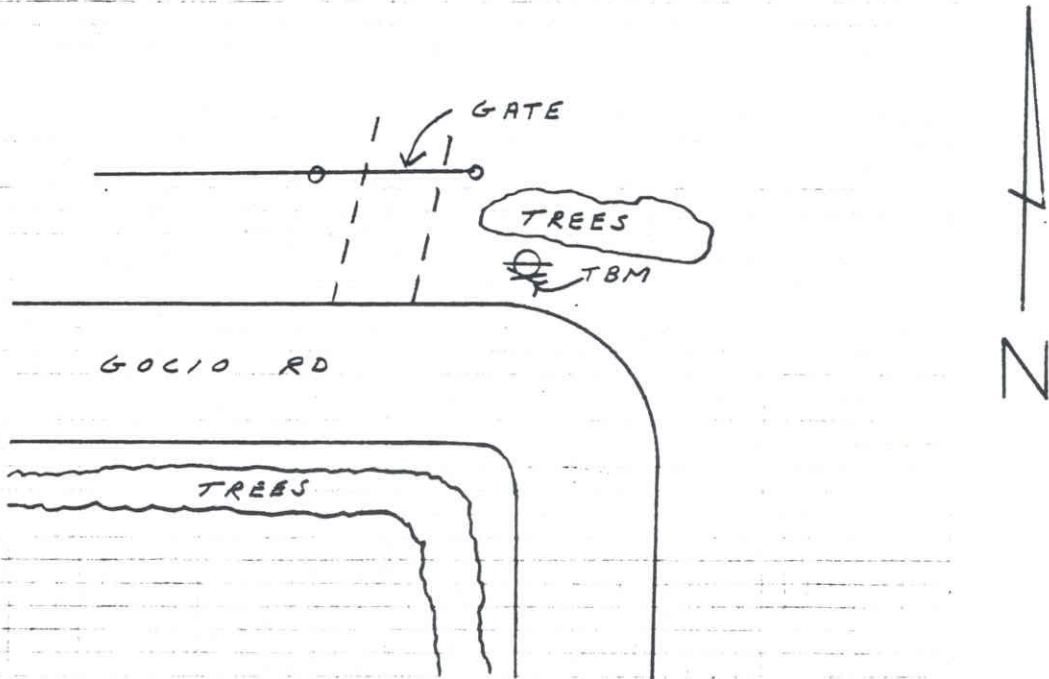


B.M.
C.M. MARKED:
R.M. EL. 28.41
ON N SIDE OF
LIFT STATION

SARASOTA COUNTY TRANSPORTATION DEPARTMENT ENGINEERING DIVISION				ELEV.
				28.41'
BENCH MARK DATA SHEET				BM. NO.
DATE DRAWN: AUG. 1985		BY: PJB		32A
REF: FB.	PG.	DATE		
REVISIONS				ELEV. BASED ON BM. NO. SARCO 32

DATE	TYPE	FB. PG.	BY
REVISIONS			

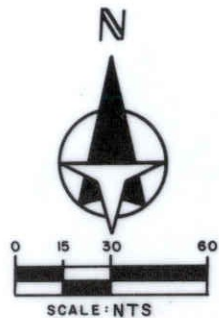
TO REACH THE MARK FROM INTER. GOCIO RD. & MINK RD.
GO ± 0.25 MI. E., TBM IS A RAILROAD SPIKE IN
S. SIDE OF P-POLE



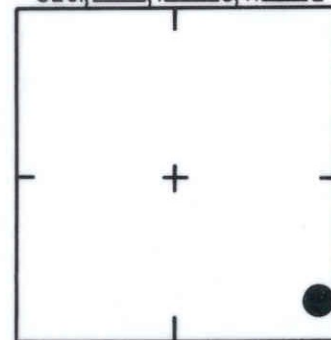
SARASOTA COUNTY TRANSPORTATION DEPARTMENT ENGINEERING DIVISION			
BENCH MARK DATA SHEET			ELEV. 33,25'
DATE DRAWN: 1-22-87		BY: RJJ	
REF: SWFWMD HFH 117			DATE: 10/81
REVISIONS			BM. NO. 32B
			ELEV. BASED ON B.M. NO. NOS

DATE	TYPE	F.B. PG.	BY

TO REACH THE MARK FROM SE COR SECTION 10;
 GO N ± 1000" ALONG POWERLINE TO TBM.
 TBM IS TOP OF ANCHOR BOLT OF EAST MOST
 GUYWIRE.



SEC. 10 T. 36 S. R. 18 E



LOCATION SKETCH
N.T.S.

PINE

H-FRAME

GUY WIRES

POWERLINE



SARASOTA COUNTY
 TRANSPORTATION DEPARTMENT
 ENGINEERING DIVISION

**BENCH MARK
 DATA SHEET**

ELEV.

26.32

BM. NO.

32C

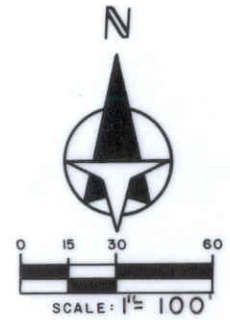
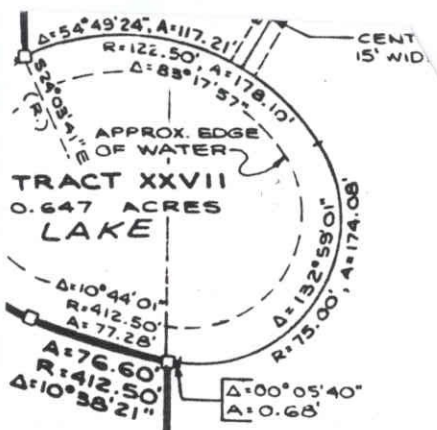
DATE DRAWN: 1-23-87 BY: RJJ

REF: SWFWMD HFH123 DATE 10/81

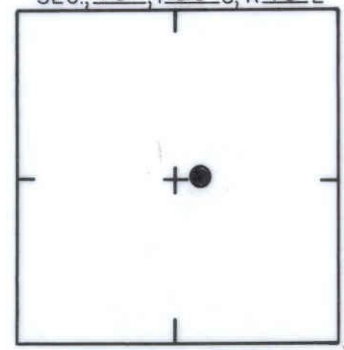
ELEV. BASED ON B.M. NO. NOS

DATE	TYPE	FB. PG.	BY
REVISIONS			

REVISIONS



SEC. 10, T. 36 S., R. 18 E.



LOCATION SKETCH
N.T.S.

EASTERLY LINE OF N.W. 1/4 OF S.E. 1/4, SECTION 10, T. 36 S., R. 18 E.
WESTERLY LINE OF N.E. 1/4 OF S.E. 1/4, SECTION 10, T. 36 S., R. 18 E.

SO 1° 01' 01" W 361.70'

SO 47° 59' E 75.94'

A: 84.72', R: 62.50', Δ: 77° 40' 07"
A: 53.43', R: 589° 16' 27" E

A: 87.30', R: 95.00', Δ: 52° 38' 55"
Δ: 14° 53' 58", R: 137.50', A: 35.76'

Δ: 57° 06' 26", R: 55.00', A: 54.82'

BENCH MARK ELEV. 27.93
CHISEL "X" CUT IN WEIR - NO P.R.M. SET
B.M. # 32 D

SUBD. THE HIGHLANDS UNIT 4

SARASOTA COUNTY
TRANSPORTATION DEPARTMENT
ENGINEERING DIVISION

BENCH MARK
DATA SHEET

ELEV.
27.93
BM. NO.

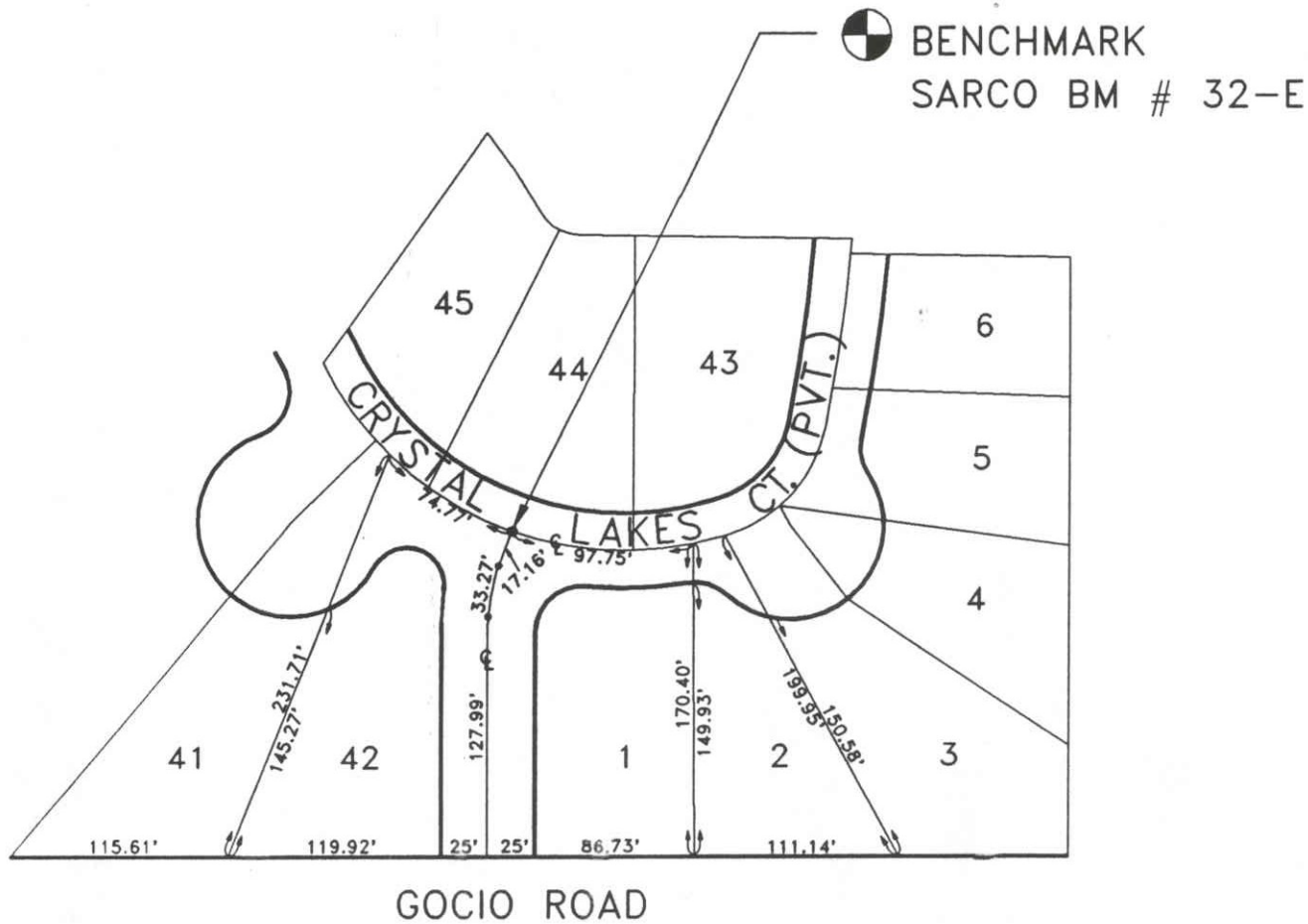
DATE DRAWN: 5/27/88 BY: S C B

REF: PB 32 PG. 28 DATE

ELEV. BASED ON BM. NO. USC & GS B93

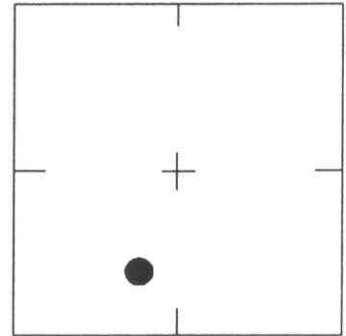
32 D

DATE	TYPE	FB. PG.	BY
REVISIONS			



SCALE: N.T.S.

SEC., 10, T 36 S, R 18 E



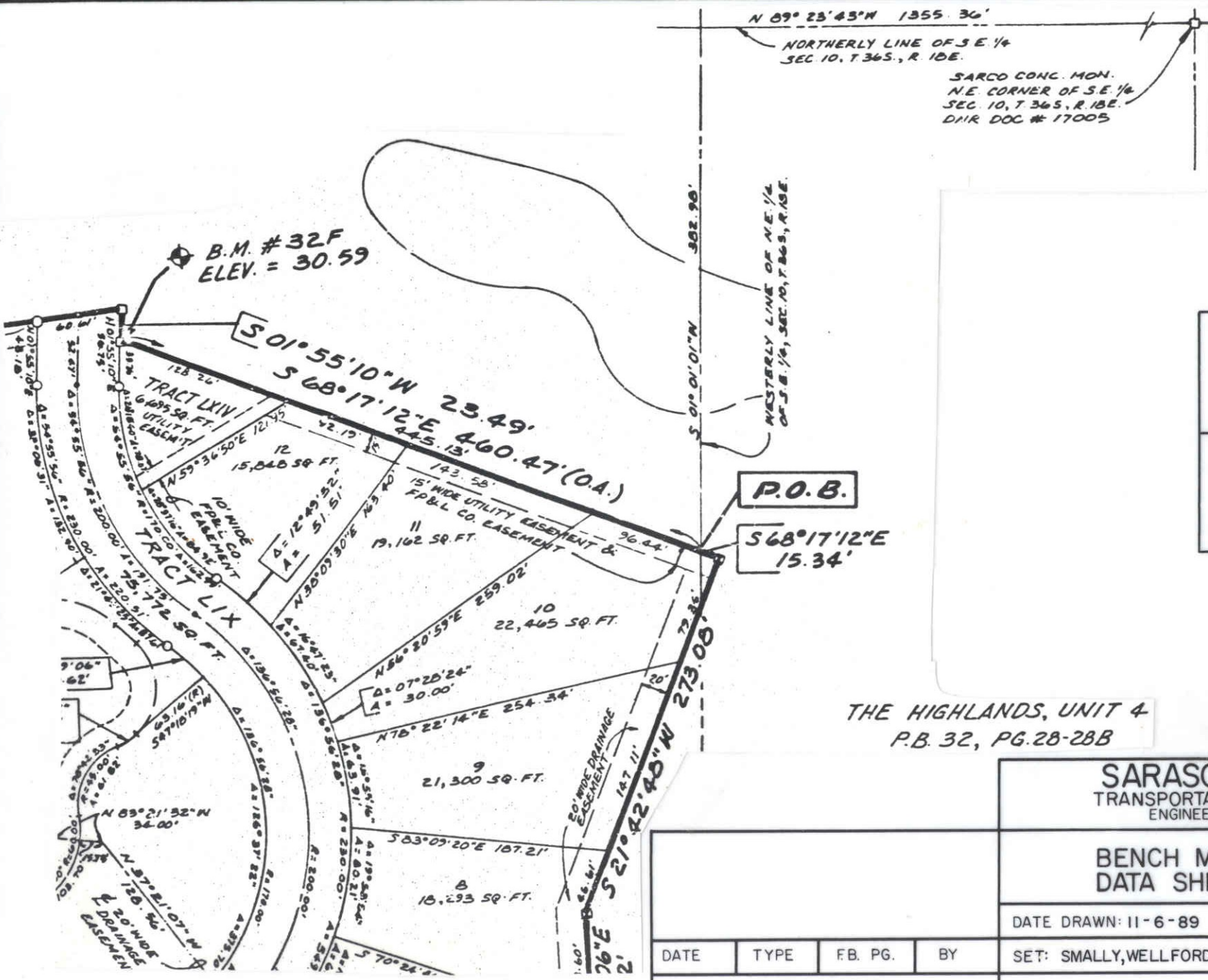
LOCATION SKETCH
N.T.S.

CRYSTAL LAKES
PB 33, PG 8
PERMANENT CONTROL POINT

REVISIONS / REMARKS

SET BY: MOSBY ENG.

SARASOTA COUNTY TRANSPORTATION DEPARTMENT ENGINEERING DIVISION, SURVEY/MAPPING SECTION	
BENCH MARK DATA SHEET	ELEV. 32.67' B.M. NO. 32-E
DATE DRAWN: 02/13/92 BY: DSW	REF.: ORB 2333 PG. 335 DATE: 10/02/91
ELEV. BASED ON B.M. NO. SARCO R-32	



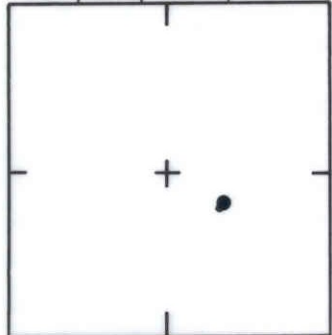
N 89° 23' 43\"/>

NORTHERLY LINE OF S.E. 1/4
SEC. 10, T. 36 S., R. 18 E.

SARCO CONC. MON.
N.E. CORNER OF S.E. 1/4
SEC. 10, T. 36 S., R. 18 E.
DNR DOC # 17005



SEC. 10, T. 36 S., R. 18 E



LOCATION SKETCH
N.T.S.

P.O.B.

S 68° 17' 12\"/>

THE HIGHLANDS, UNIT 4
P.B. 32, PG. 28-28B

SARASOTA COUNTY
TRANSPORTATION DEPARTMENT
ENGINEERING DIVISION

**BENCH MARK
DATA SHEET**

ELEV.

30.59'

DATE DRAWN: 11-6-89

BY: KLP

BM. NO.

SET: SMALLY, WELLFORD & NALVEN, INC.

32 F

ELEV. BASED ON BM. NO. USC&GS BM B93

DATE	TYPE	FB. PG.	BY
------	------	---------	----

REVISIONS