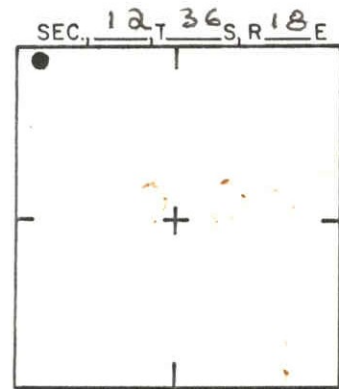


P.B. 30/30
 SHEET 35
 N $\frac{1}{2}$ Sec 12 Twp 36 Rg 18



LOCATION SKETCH
 N.T.S.

THE MEADOWS
 UNIT 11
 P.B. 30, P. 1-18

SARCO SEC. COR. NO.
 D. N. R. DOC. NO. 6447

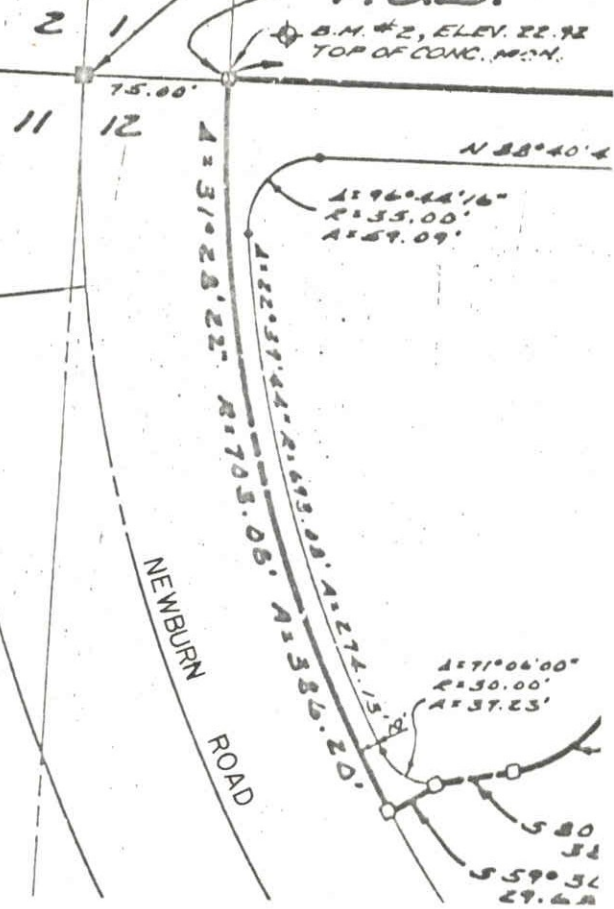
P.O.B.

B.M. #2, ELEV. 22.92
 TOP OF CONC. M.C.N.

NORTHERLY LINE OF
 SEC. 11, T. 36 S., R. 18 E.

LONGMEADOW
 (PUBLIC)
 12, 687 ACRES

NEWBURN
 ROAD



SARASOTA COUNTY
 TRANSPORTATION DEPARTMENT
 ENGINEERING DIVISION

BENCH MARK
 DATA SHEET

ELEV.

22.92

DATE DRAWN: 8-7-85 BY: WFW

BM. NO.

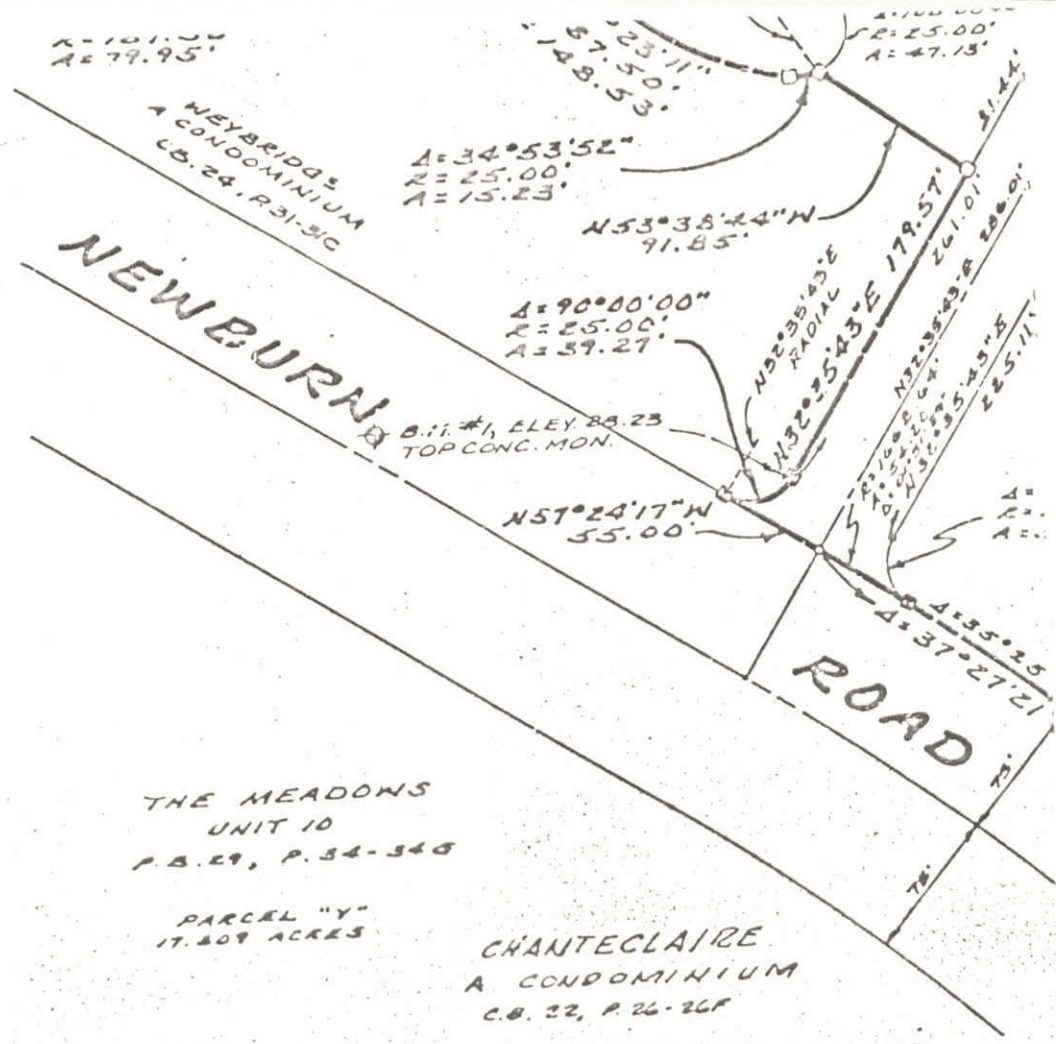
DATE	TYPE	FB. PG.	BY
------	------	---------	----

REF: FB. PG. DATE

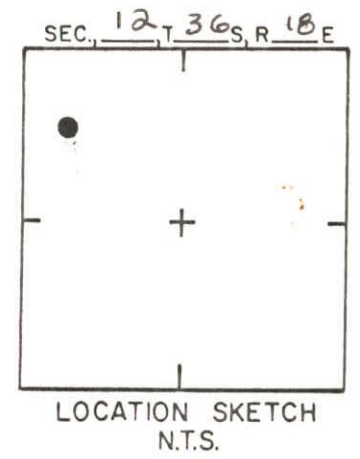
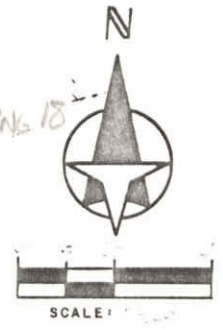
REVISIONS

ELEV. BASED ON BM. NO. USC & GS

35A



P.B. 30/30
 SHEET 35
 N $\frac{1}{2}$ SEC 12 TWP 36 R $\frac{18}{2}$



THE MEADOWS
 UNIT 10
 P.B. 29, P. 34-34B

PARCEL "Y"
 17.809 ACRES

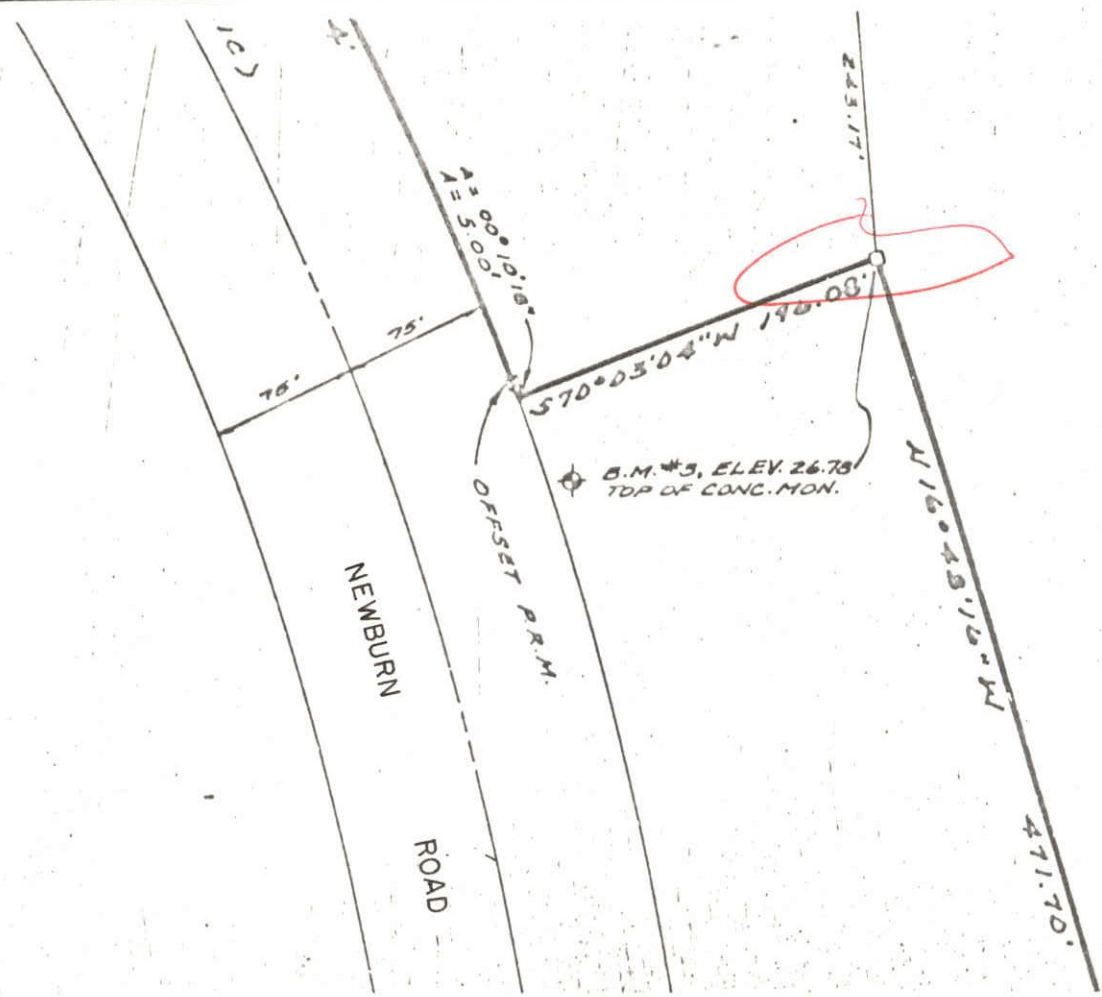
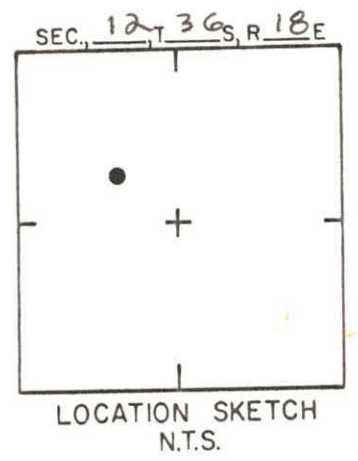
CHANTECLAIRE
 A CONDOMINIUM
 C.B. 22, P. 26-26F

SARASOTA COUNTY
 TRANSPORTATION DEPARTMENT
 ENGINEERING DIVISION

BENCH MARK DATA SHEET		ELEV.
		28.23
DATE DRAWN: 8-7-85		BY: WFW
REF: F.B.	PG.	DATE
ELEV. BASED ON B.M. NO. USC & GS		35 C

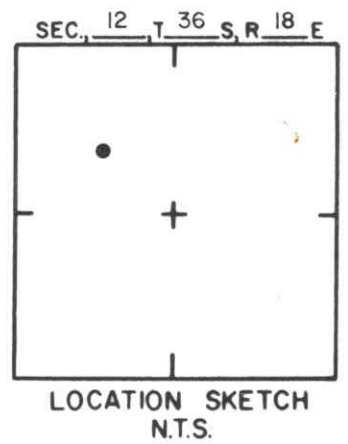
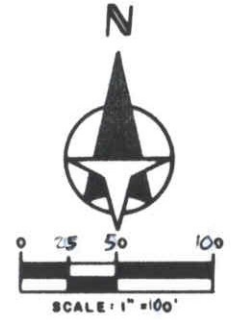
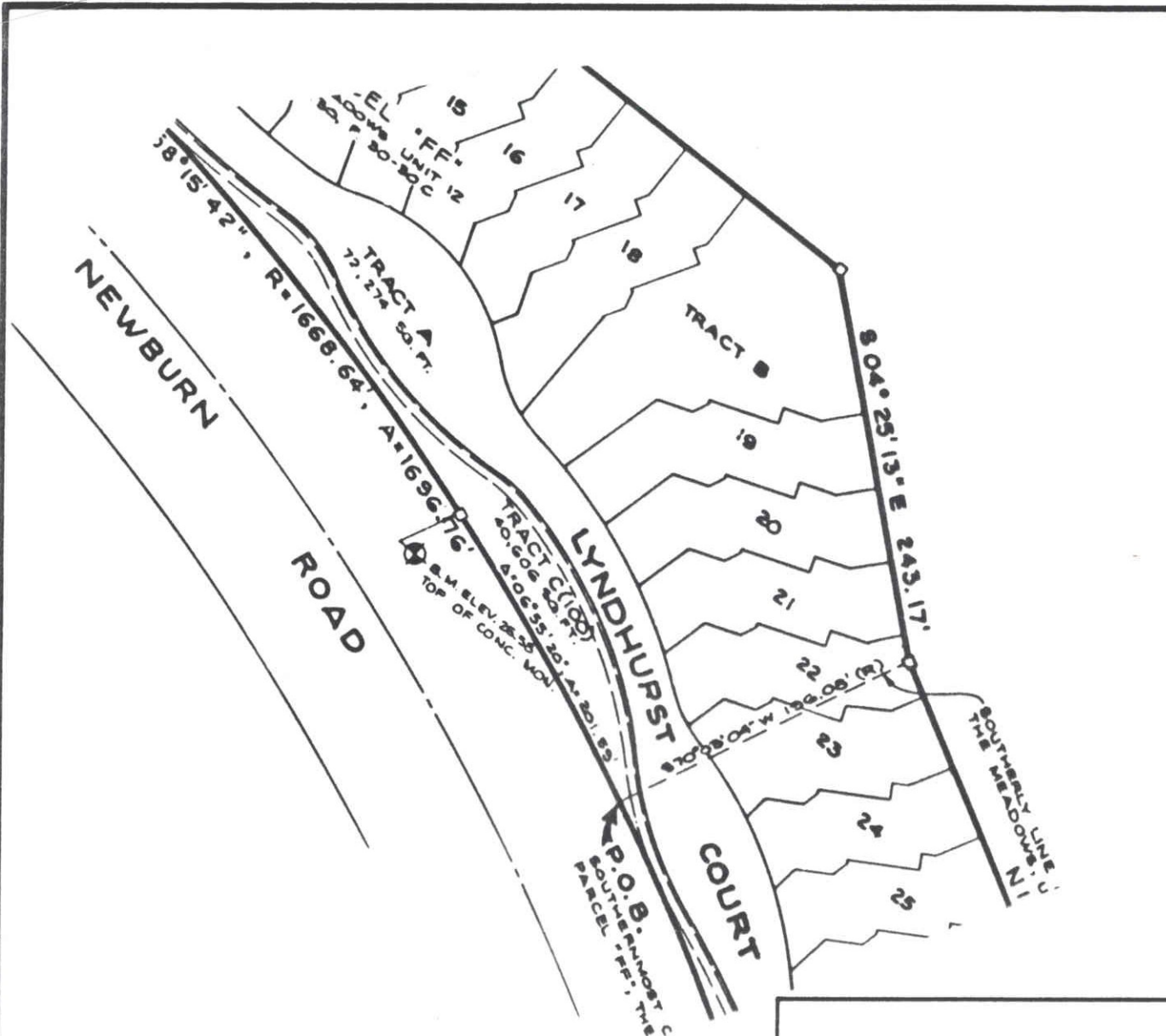
DATE	TYPE	F.B. PG.	BY
REVISIONS			

P.B. 30/30
 SHEET # 35
 N½ sec 12 Twp 36 Rng 18



SARASOTA COUNTY TRANSPORTATION DEPARTMENT ENGINEERING DIVISION			
BENCH MARK DATA SHEET			ELEV. 26.78
DATE DRAWN: 8-7-85		BY: WFW	
REF: F.B.		PG.	DATE
ELEV. BASED ON B.M. NO. USC & GS.			BM. NO. 35E

REVISIONS			
DATE	TYPE	F.B. PG.	BY



SARASOTA COUNTY
 TRANSPORTATION DEPARTMENT
 ENGINEERING DIVISION

BENCH MARK DATA SHEET		ELEV.
		26.58'
DATE DRAWN: 8-86		BY: PJB
REF: PB. 31		PG. 17
DATE 8-86		BM. NO.
ELEV. BASED ON BM. NO. N.O.S.		35-F

DATE	TYPE	FB. PG.	BY
REVISIONS			