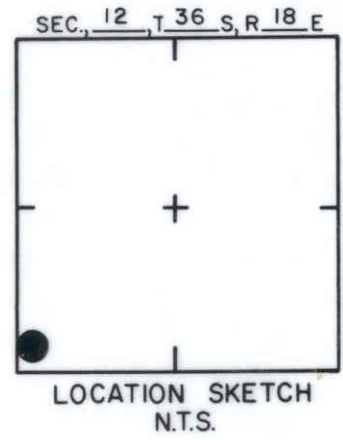
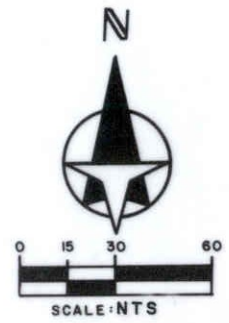
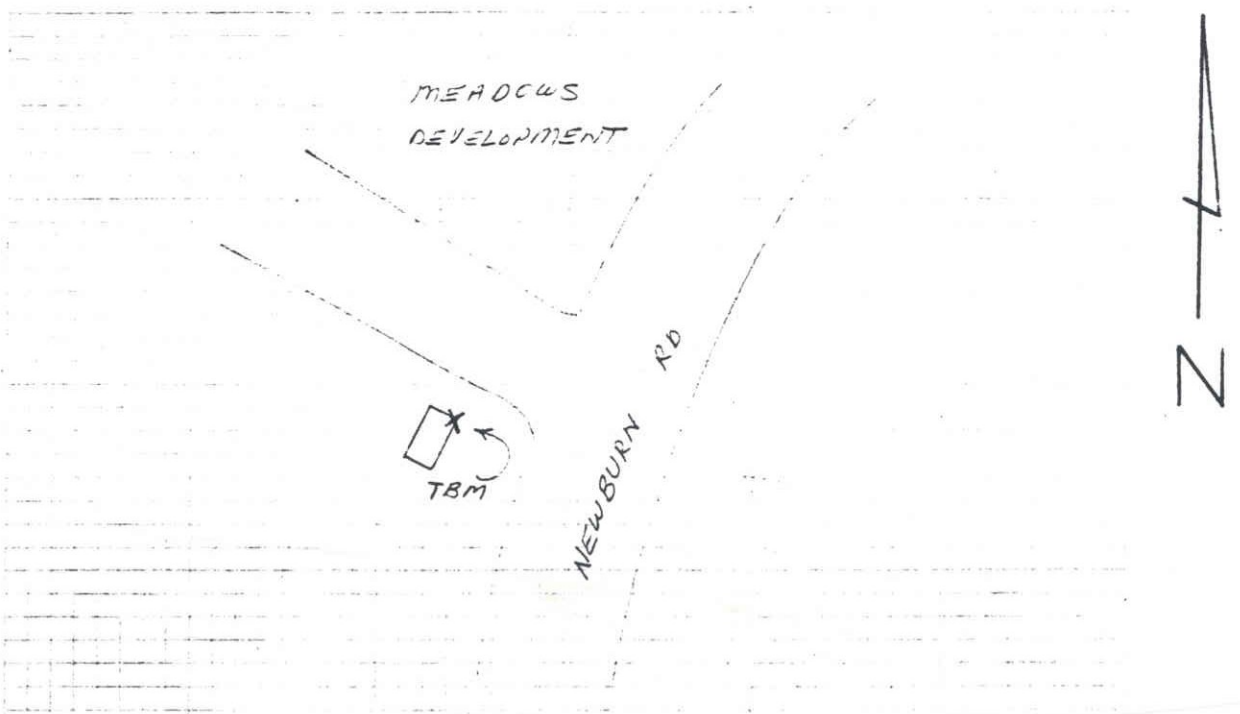


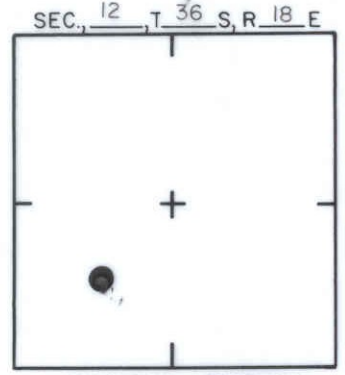
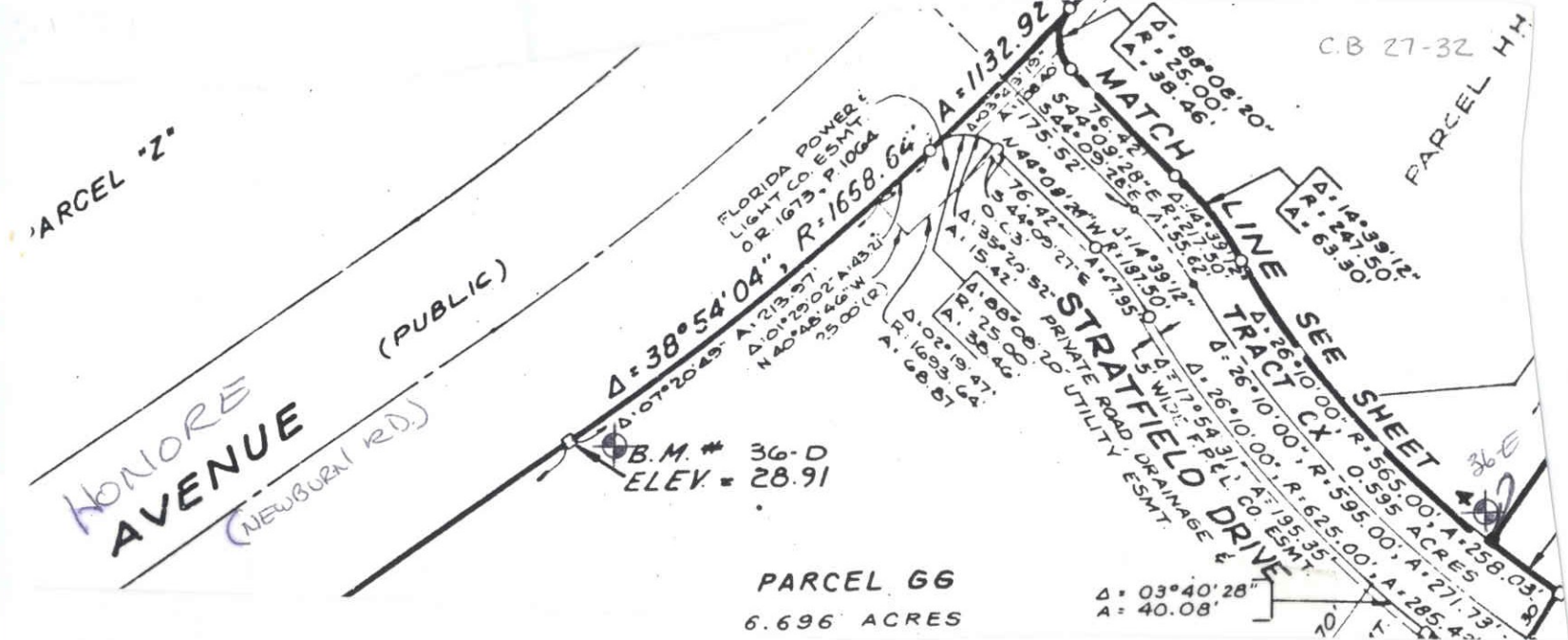
TO REACH THE MARK FROM NEAR SW. COR SECTION 12;  
 TBM IS CHISELED SQUARE ON NE COR CONC  
 BASE FOR TELEPHONE CABLE BOX



**SARASOTA COUNTY**  
 TRANSPORTATION DEPARTMENT  
 ENGINEERING DIVISION

<b>BENCH MARK DATA SHEET</b>		ELEV.
		31.03
DATE DRAWN: 1-27-87 BY: RJJ		BM. NO.
REF: SWFWMD HFH 141 DATE 10/81		36C
ELEV. BASED ON B.M. NO. NOS		

DATE	TYPE	FB. PG.	BY
<b>REVISIONS</b>			



SARASOTA COUNTY  
TRANSPORTATION DEPARTMENT  
ENGINEERING DIVISION

BENCH MARK  
DATA SHEET

ELEV.

28.91

BM. NO.

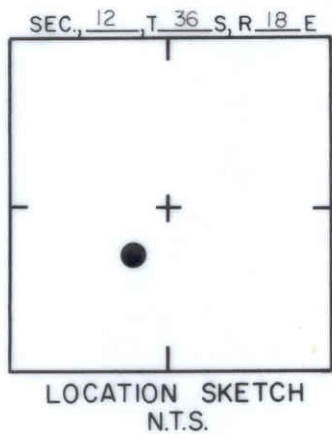
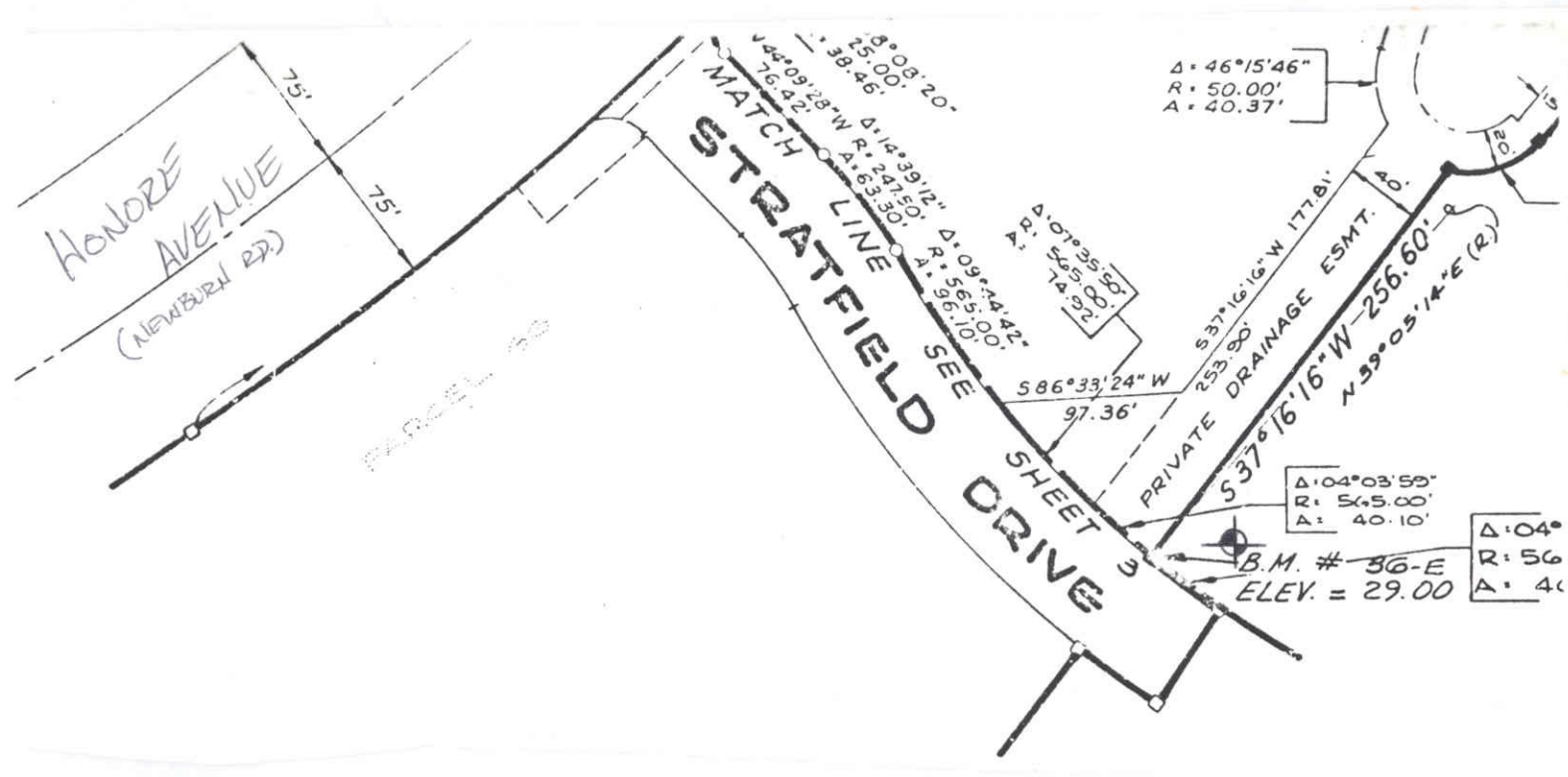
36 D

DATE DRAWN: 11-1-88 BY: *bag*

REF: F.B. PG. DATE

ELEV. BASED ON B.M. NO. B93

DATE	TYPE	F.B. PG.	BY
REVISIONS			



**SARASOTA COUNTY**  
TRANSPORTATION DEPARTMENT  
ENGINEERING DIVISION

**BENCH MARK  
DATA SHEET**

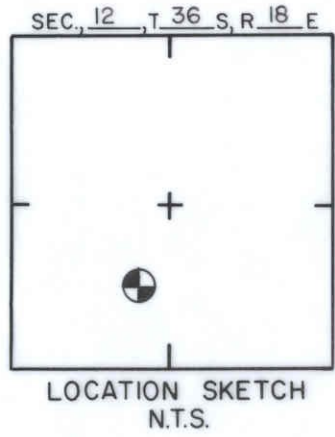
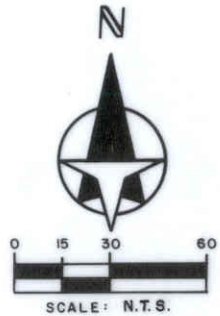
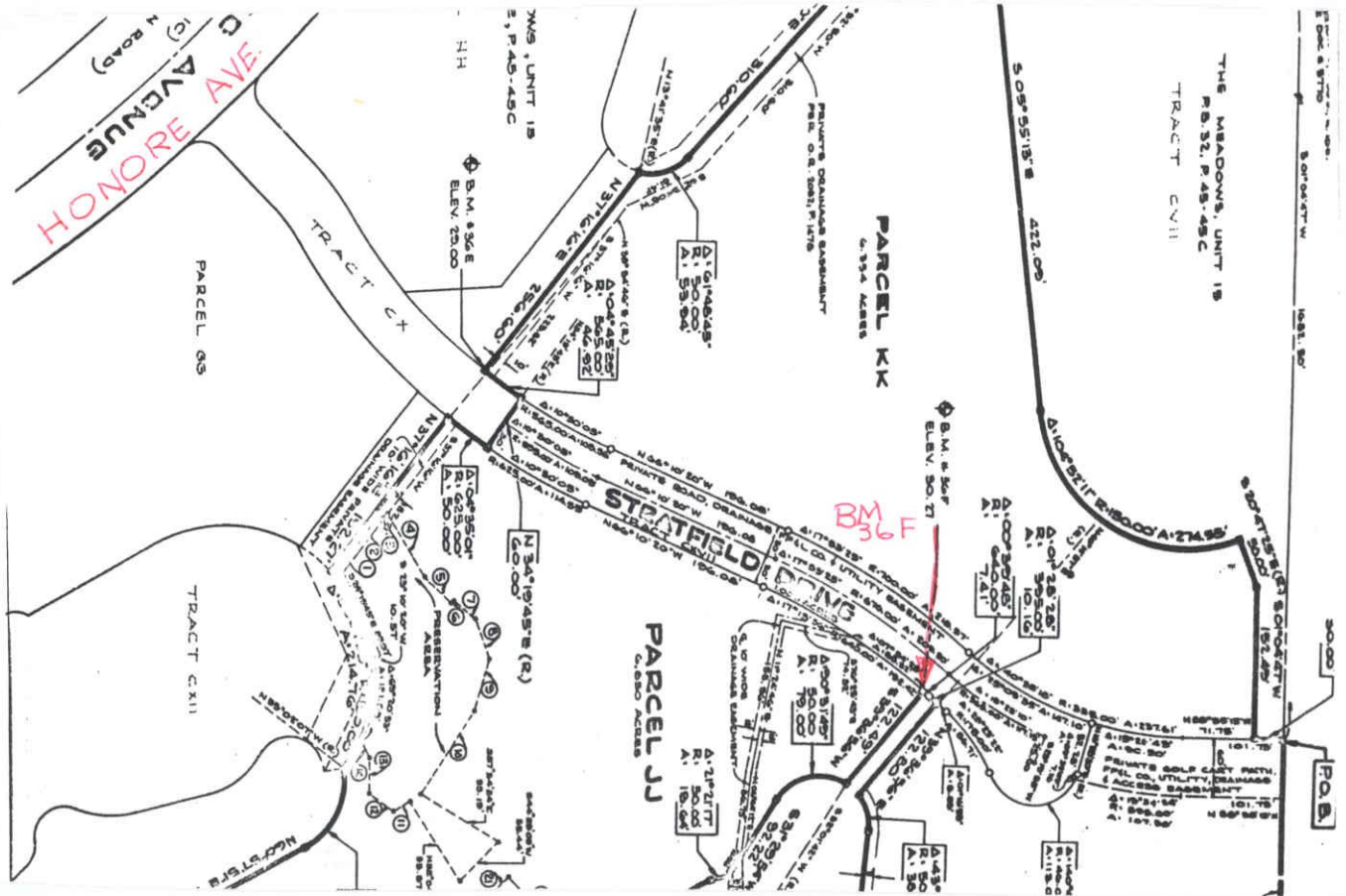
DATE DRAWN: 11-1-88 BY: *BAG*

REF: F.B. PG. DATE

ELEV. BASED ON B.M. NO. B 93

ELEV.  
29.00  
BM. NO.  
36 E

DATE	TYPE	F.B. PG.	BY
REVISIONS			



PER: THE MEADOWS, UNIT 16 PB33/25

**SARASOTA COUNTY**  
TRANSPORTATION DEPARTMENT  
ENGINEERING DIVISION

**BENCH MARK  
DATA SHEET**

ELEV.  
30.27'

DATE DRAWN: 7/24/89 BY: SCB

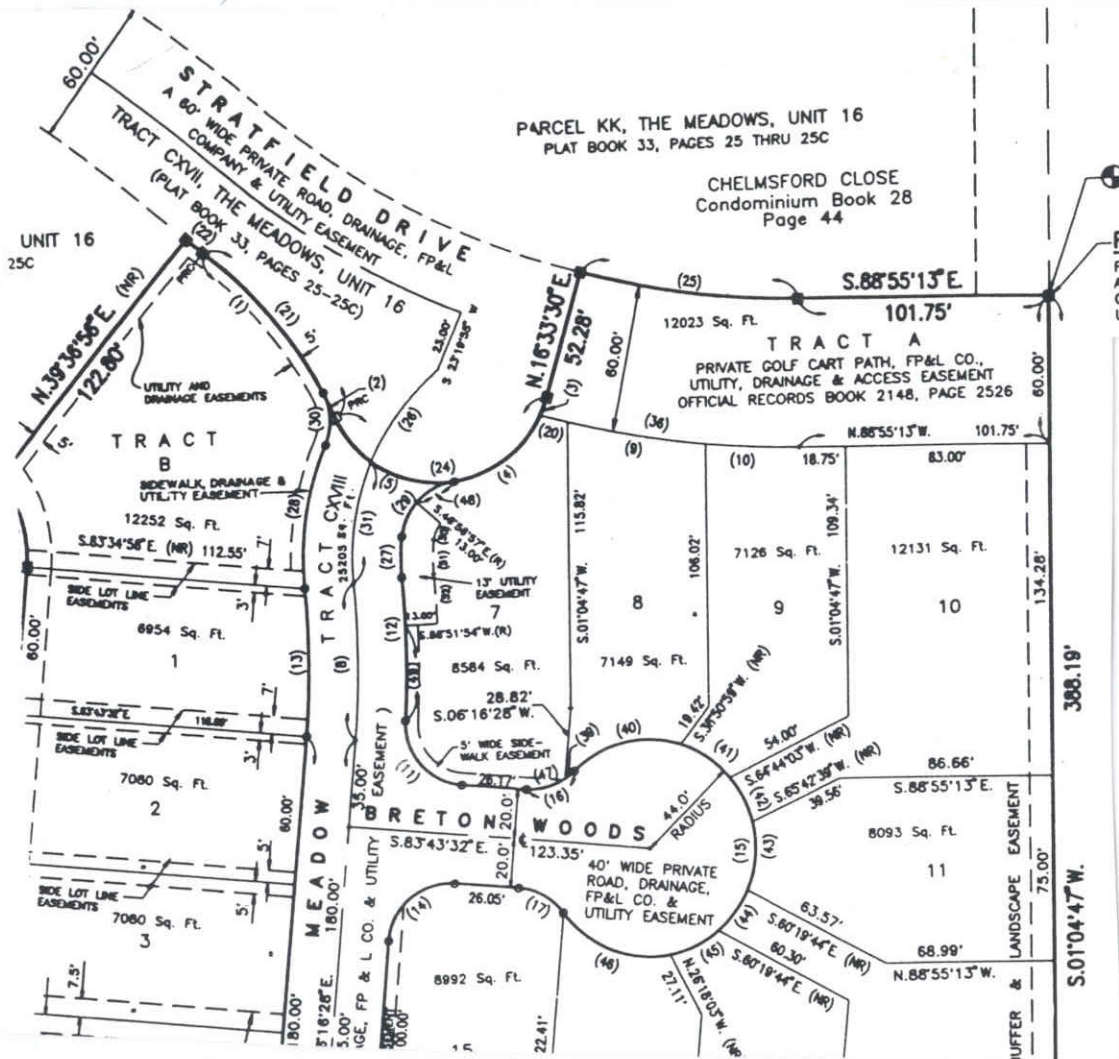
BM. NO.

DATE	TYPE	FB. PG.	BY	REF: FB.	PG.	DATE
------	------	---------	----	----------	-----	------

36 F

**REVISIONS**

ELEV. BASED ON BM. NO. N.G.V.D.#B93



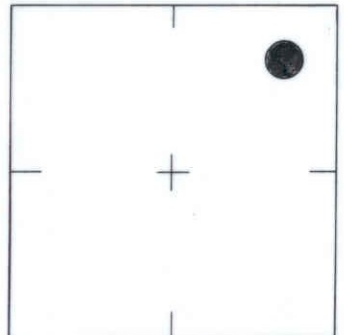
B.M. #36-G  
ELEV. 29.72

P.O.B.  
FOUND CONCRETE MON.  
AT THE NORTHEAST CORNER  
OF PARCEL II, THE M.  
UNIT 16



SCALE: N.T.S.

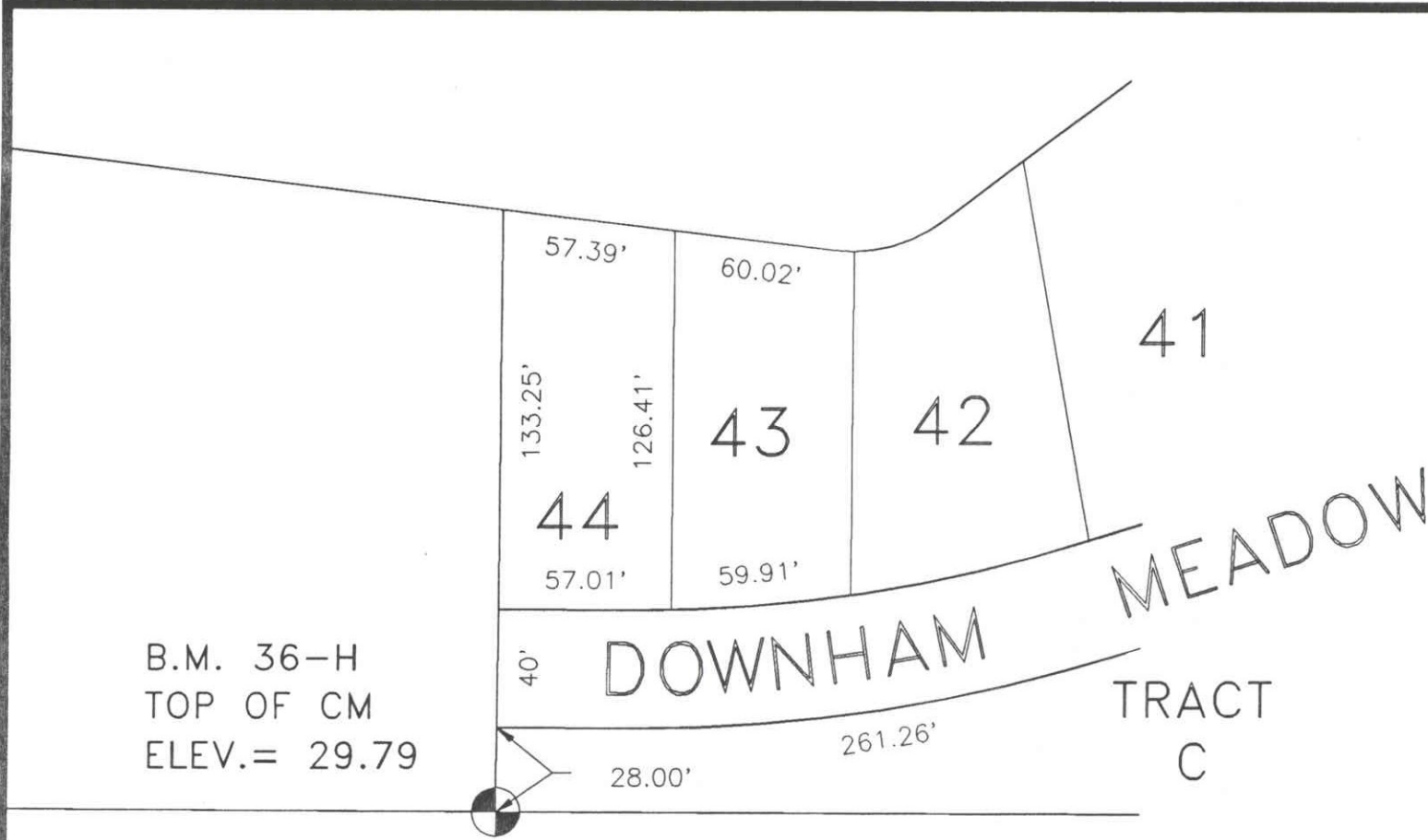
SEC. 12 T. 36 S. R. 18 E



LOCATION SKETCH  
N.T.S.

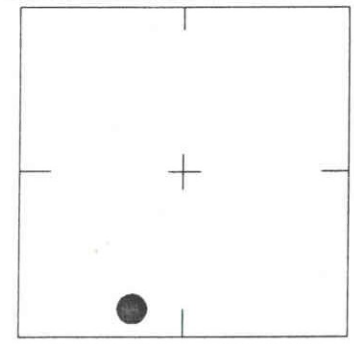
SARASOTA COUNTY  
TRANSPORTATION DEPARTMENT  
ENGINEERING DIVISION, SURVEY/MAPPING SECTION

REVISIONS / REMARKS	BENCH MARK DATA SHEET	
	DATE DRAWN: 2/26/91	BY: JFJ
	ELEV.	29.72
	B.M. NO.	36 G
SET BY: MINDER & RHODES ENG.	REF.: 34	PG. 49 DATE: 2/6/91
	ELEV. BASED ON B.M. NO.	



SCALE: N.T.S.

SEC., 12 , T 36 S, R 18 E



LOCATION SKETCH  
N.T.S.

B.M. 36-H  
TOP OF CM  
ELEV.= 29.79

STRATFIELD PARK  
PHASE II  
A SUBDIVISION  
PLAT BOOK 35, PAGE 16

REVISIONS / REMARKS
SET BY: MINDER & RHODES ENG. CORP.

SARASOTA COUNTY TRANSPORTATION DEPARTMENT ENGINEERING DIVISION, SURVEY/MAPPING SECTION	
BENCH MARK DATA SHEET	ELEV.
DATE DRAWN: 09/09/91 BY: GES	29.79
REF.: PB. 35 PG. 16 DATE: 06/26/91	B.M. NO.
ELEV. BASED ON B.M. NO. SARCO 36-F	36-H