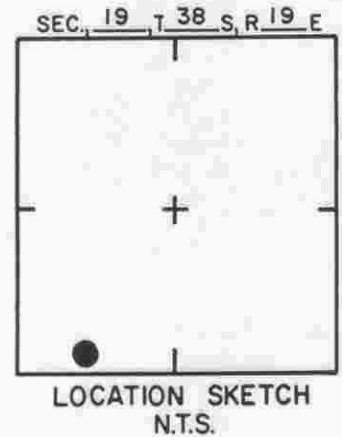
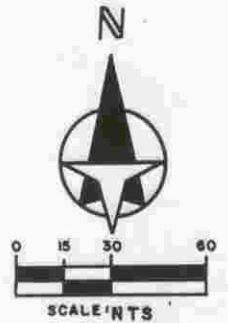
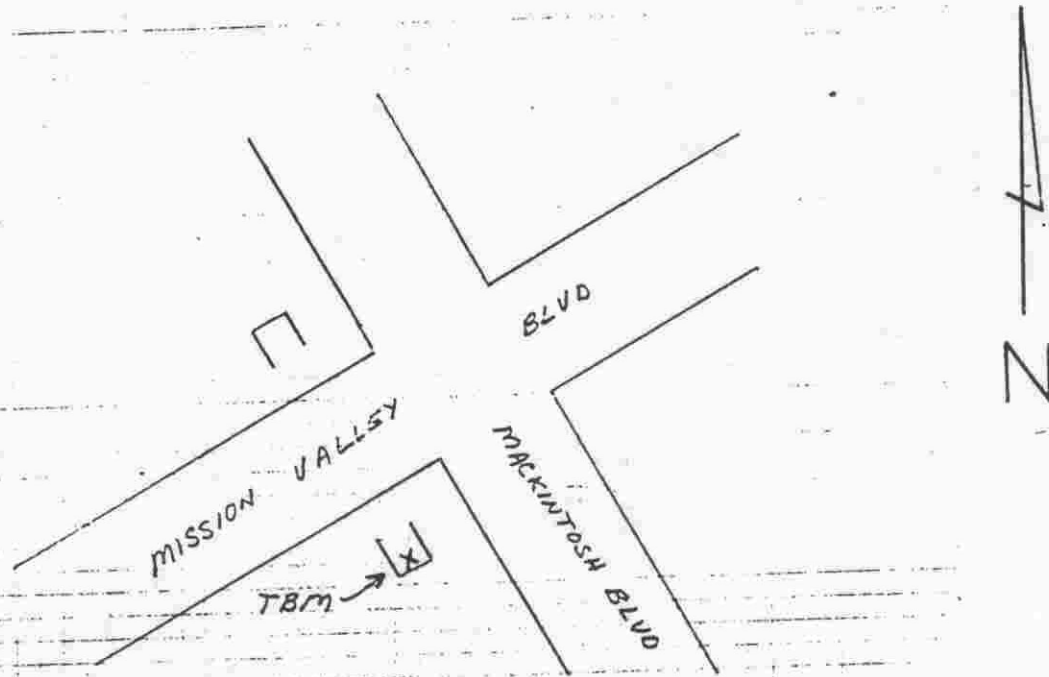


TO REACH THE MARK FROM AT INTER MISSION VALLEY BLVD. &
 MACKINTOSH BLVD; TBM IS CHISELED SQUARE
 ON S.E. END CONIC CULVERT PIPE IN SW COR
 INTER



SARASOTA COUNTY
 TRANSPORTATION DEPARTMENT
 ENGINEERING DIVISION

**BENCH MARK
 DATA SHEET**

ELEV.

10,45

BM. NO.

360

DATE DRAWN: 2-4-81

BY: RJJ

REF: SW FWMD HFH 199 DATE 11/81

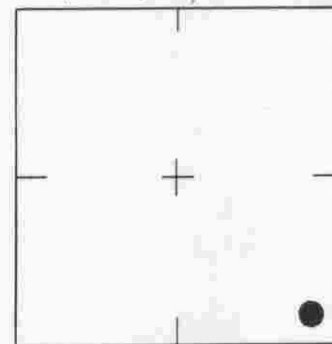
DATE	TYPE	FB. PG.	BY
REVISIONS			

ELEV. BASED ON BM. NO. NOS



SCALE: N.T.S.

SEC. 19 T. 38 S. R. 19 E



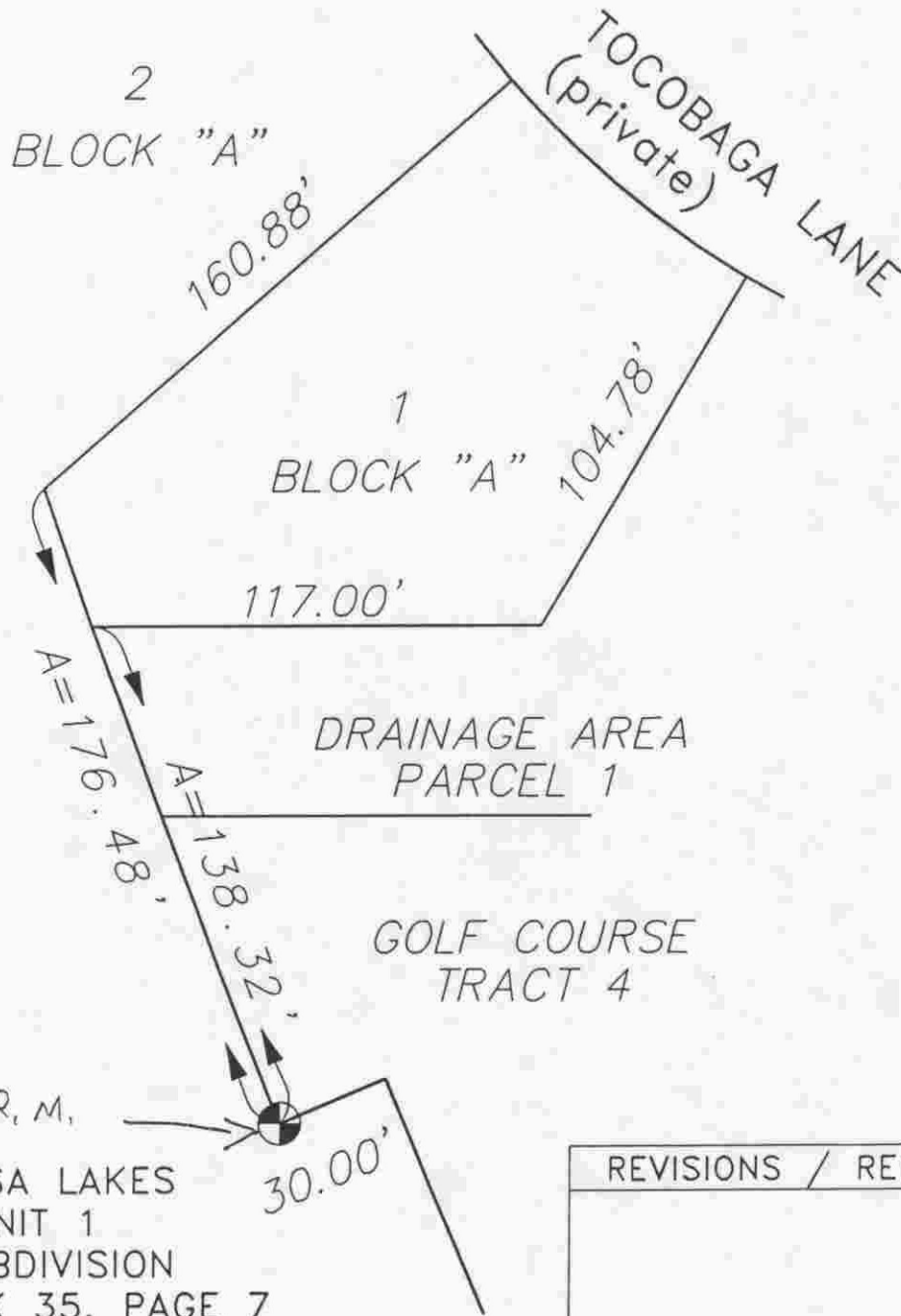
LOCATION SKETCH
N.T.S.

RUDON ACRES
(REPLAT OF LOT 92 OF MISSION VALLEY)

SARASOTA COUNTY

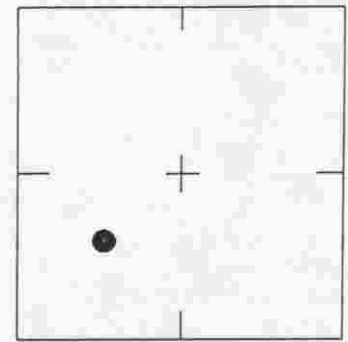
TRANSPORTATION DEPARTMENT
ENGINEERING DIVISION, SURVEY/MAPPING SECTION

REVISIONS / REMARKS	BENCH MARK DATA SHEET	
		ELEV.
	DATE DRAWN: 10/01/90	BY: SDS
	REF.: P.B. 34 PG. 14	DATE: 7/29/89
SET BY: LEMONDE INC.	ELEV. BASED ON B.M. NO. 383 (S.C.V.D)	B.M. NO. 360 A



SCALE: N.T.S.

SEC., 19 , T 38 S, R 19 E



LOCATION SKETCH,
N.T.S.

SARASOTA COUNTY TRANSPORTATION DEPARTMENT ENGINEERING DIVISION, SURVEY/MAPPING SECTION	
BENCH MARK DATA SHEET	ELEV.
DATE DRAWN: 6/26/91 BY: GES	13.34
REF.: PB. 35 PG. 7 DATE: 4/24/91	B.M. NO.
SET BY: BISHOP & ASSOCIATES	360-B
ELEV. BASED ON B.M. NO. SARCO 163-A	

REVISIONS / REMARKS