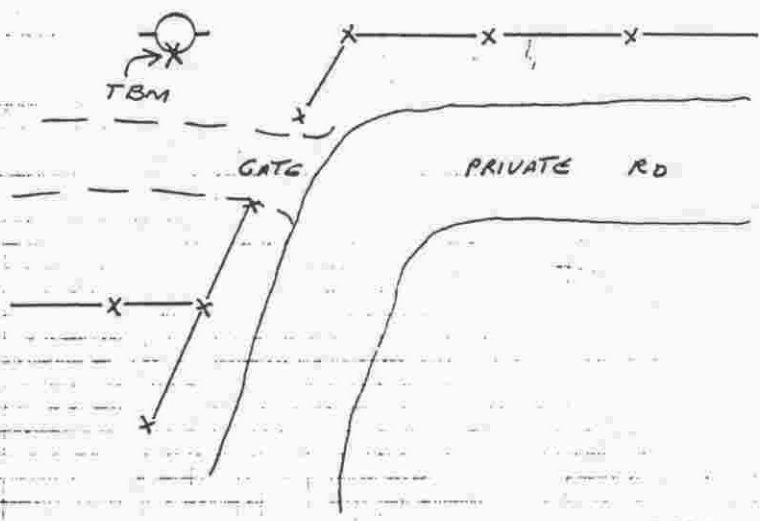
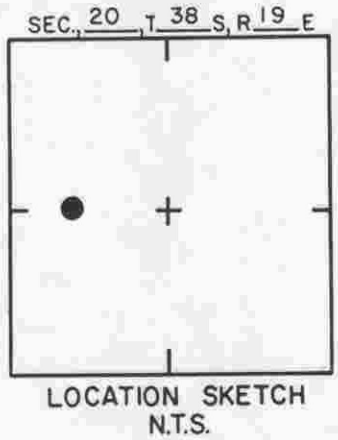
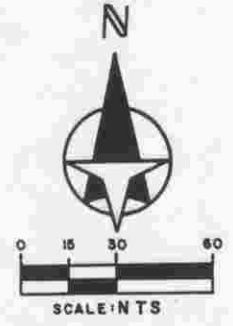


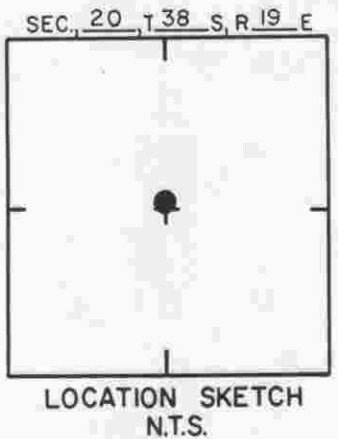
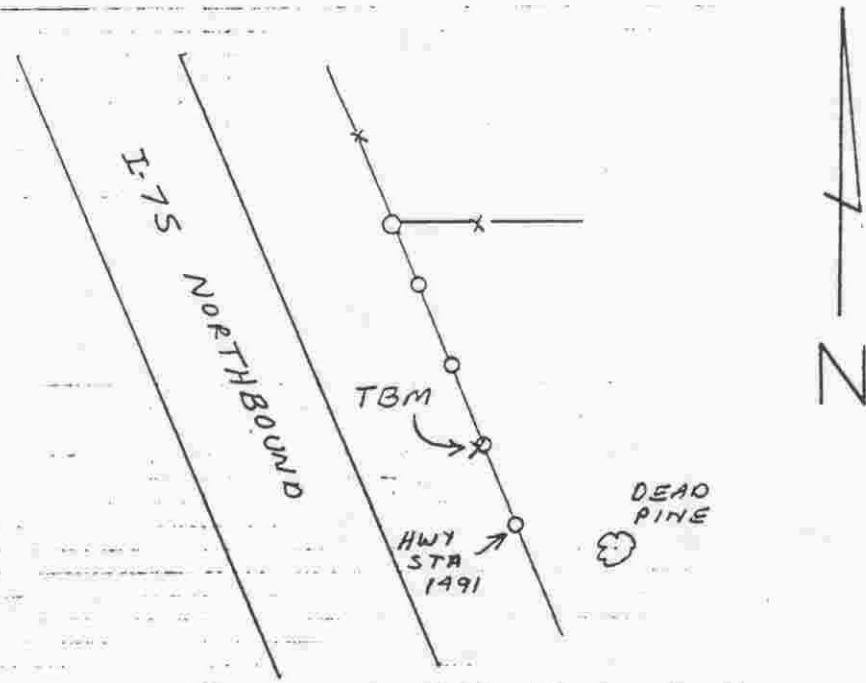
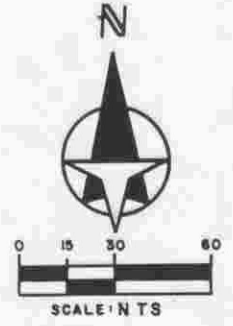
TO REACH THE MARK FROM WEST 1/4 COR SEC 20;
 GO E ± 500' TO TBM.
 TBM IS 60 D NAIL IN S. FACE P-POLE.



SARASOTA COUNTY TRANSPORTATION DEPARTMENT ENGINEERING DIVISION			
BENCH MARK DATA SHEET			ELEV. 15.71'
DATE DRAWN: 2-9-87		BY: RJJ	
REF: SWFWMD GWL 117		DATE 11/80	
ELEV. BASED ON B.M. NO. NOS			BM. NO. 361
REVISIONS			

11

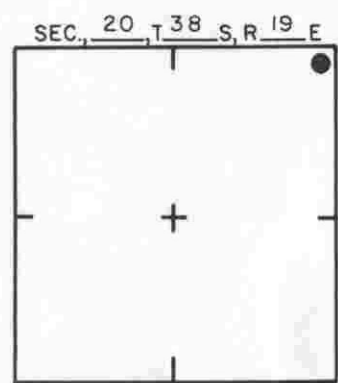
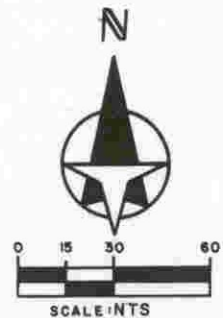
TO REACH THE MARK FROM AT CENTER SEC 20;
TBM IS 60 0 MAIL IN W. FACE FENCE POST.



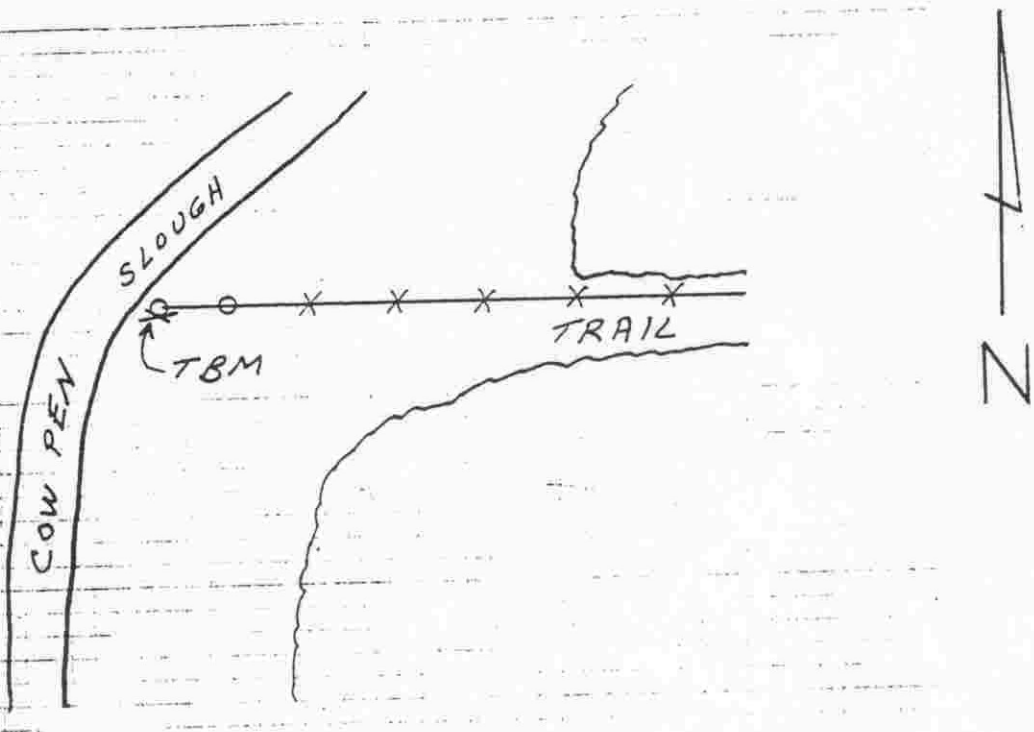
SARASOTA COUNTY TRANSPORTATION DEPARTMENT ENGINEERING DIVISION			
BENCH MARK DATA SHEET			ELEV. 16,22'
DATE DRAWN: 2-9-87		BY: RJJ	
REF: SWFWMD GWL 118		DATE 11/80	
ELEV. BASED ON B.M. NO. NOS			BM. NO. 361A

DATE	TYPE	FB. PG.	BY
REVISIONS			

TO REACH THE MARK FROM NE COR SEC 20;
 TBM IS 60 Ø NAIL IN S. FACE FENCE POST.



LOCATION SKETCH
 N.T.S.



SARASOTA COUNTY
 TRANSPORTATION DEPARTMENT
 ENGINEERING DIVISION

BENCH MARK DATA SHEET		ELEV.
		22,44'
DATE DRAWN: 2-10-87 BY: RJJ		BM. NO.
REF: SWFWMD GWL 128 DATE 11/80		361B
ELEV. BASED ON BM. NO. NOS		

DATE	TYPE	FB. PG.	BY
REVISIONS			