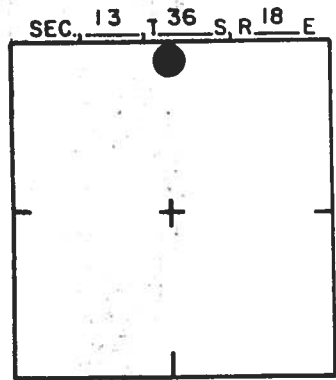
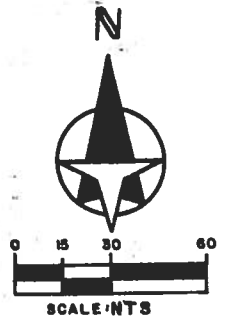
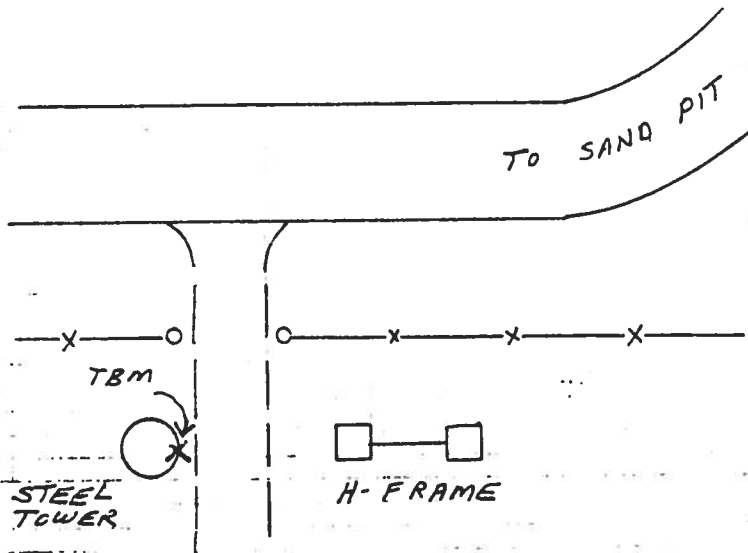


TO REACH THE MARK FROM NEAR NORTH 1/4 COR. SECTION 13;
 TBM IS CHISELED CROSS ON EAST EDGE OF BASE
 OF STEEL TRANSMISSION TOWER. ± 4' ABOVE
 GROUND



LOCATION SKETCH
 N.T.S.



SARASOTA COUNTY
 TRANSPORTATION DEPARTMENT
 ENGINEERING DIVISION

**BENCH MARK
 DATA SHEET**

ELEV.

33,73

BM. NO.

37A

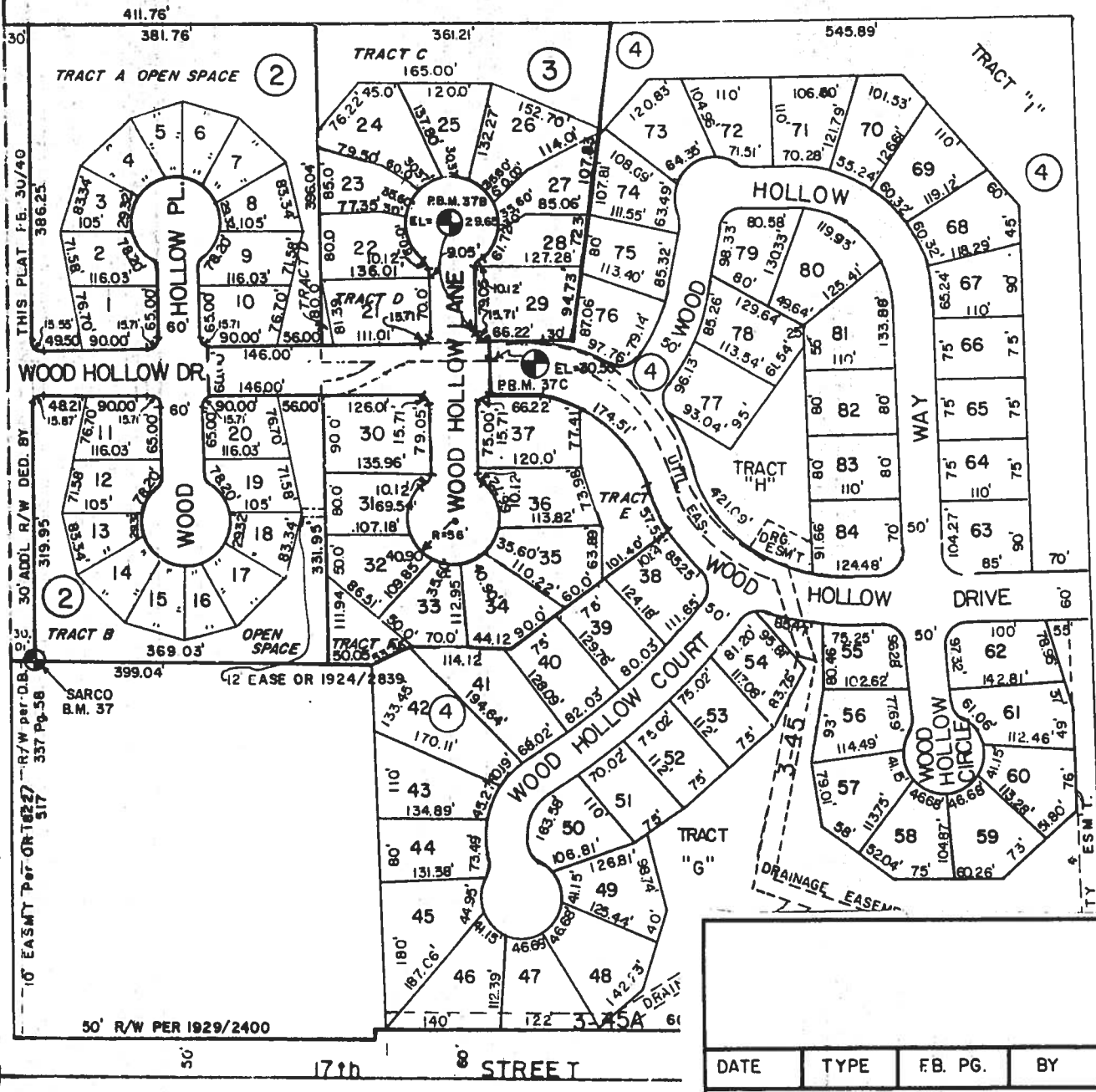
DATE DRAWN: 1-27-87 BY: RJJ

DATE TYPE FB. PG. BY REF: SWFWMD HFH 142 DATE 10/81

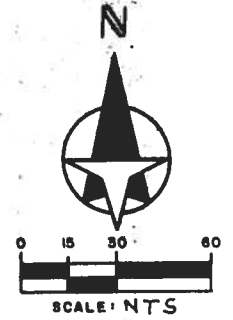
REVISIONS

ELEV. BASED ON B.M. NO. NOS

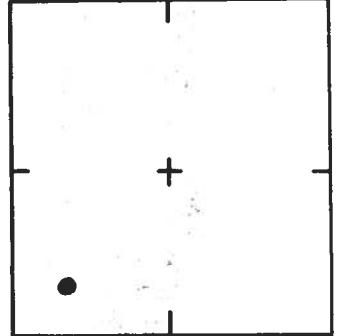
HONORE



The Woods
 UNIT II
 PB 31/38



SEC. 13, T. 36 S, R. 18 E



SARASOTA COUNTY
 TRANSPORTATION DEPARTMENT
 ENGINEERING DIVISION

**BENCH MARK
 DATA SHEET**

ELEV.
 29.65'

DATE DRAWN: Feb 1987 BY: C.C.

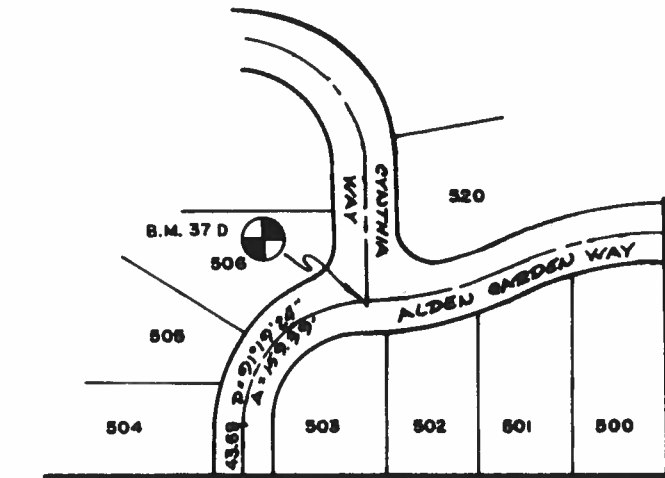
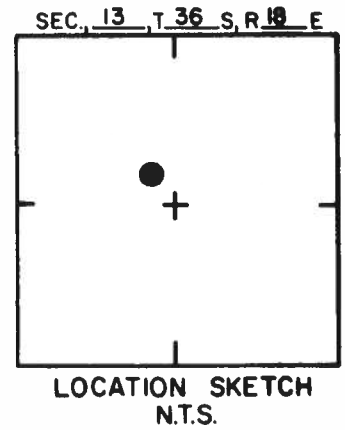
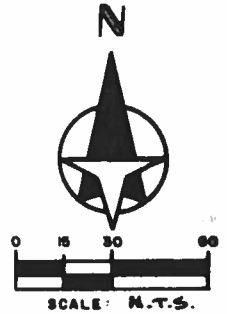
BM. NO.

DATE	TYPE	FB. PG.	BY
REVISIONS			

REF: FB. PG. DATE

37B

ELEV. BASED ON B.M. NO. # 39



N.W. COR. E. 1/2, E. 1/2,
S.E. 1/4, N.W. 1/4, SEC. 13

DEER HOLLOW, PHASE II

1307.27' ±
N.00° 17' 43" E

2395' ±

R/W LINE

17th STREET

SEC. COR., NO. 292

DEER HOLLOW UNIT NO. II PB. 33/49

SARASOTA COUNTY
TRANSPORTATION DEPARTMENT
ENGINEERING DIVISION

**BENCH MARK
DATA SHEET**

ELEV.

30.92'

DATE DRAWN: 2-5-90

BY: KLP

BM. NO.

SET BY: MOSBY ENG. ASSO., INC.

37 D

ELEV. BASED ON BM. NO. 46A

DATE	TYPE	FB. PG.	BY
------	------	---------	----

REVISIONS