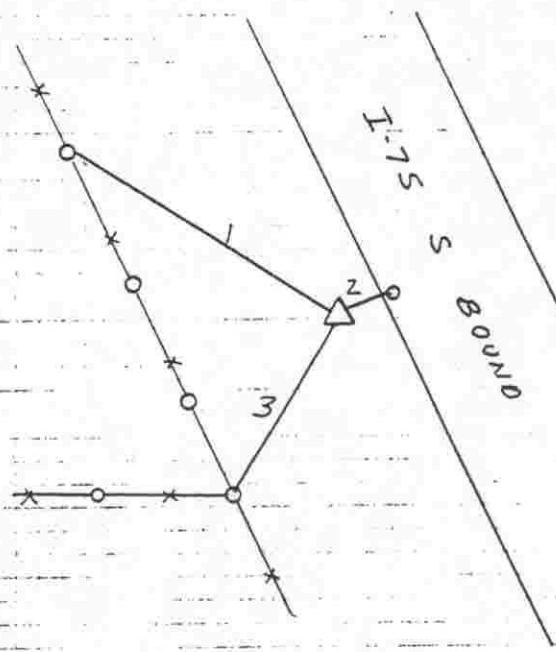
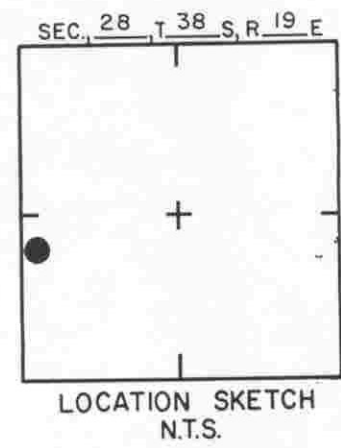
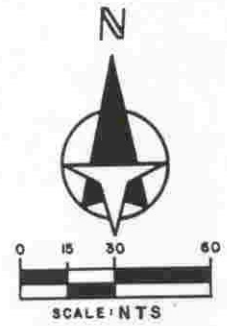


TO REACH THE MARK FROM INTER I-75 & LAUREL RD:  
 GO NORTH ± 0.65 MILES TO STA 0+1 LEFT. (WEST)  
 STA IS IRON PEG & PLASTIC CAP

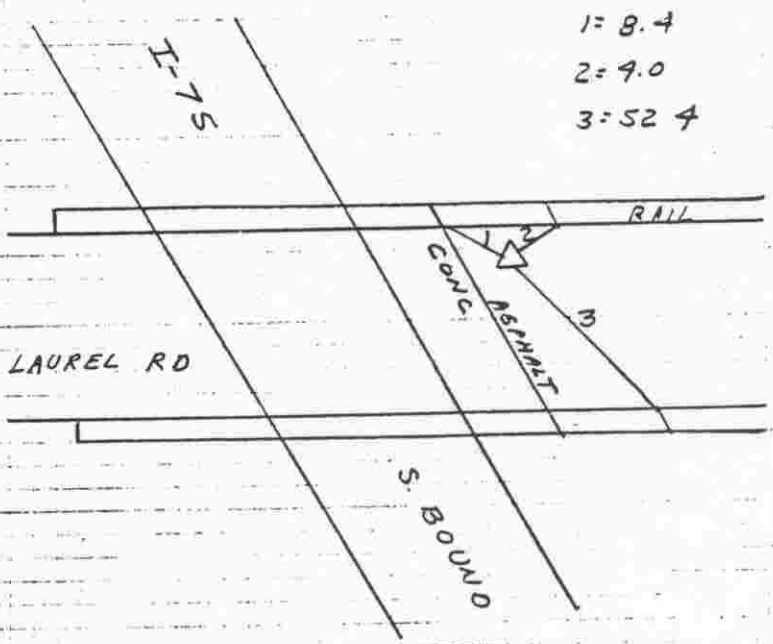
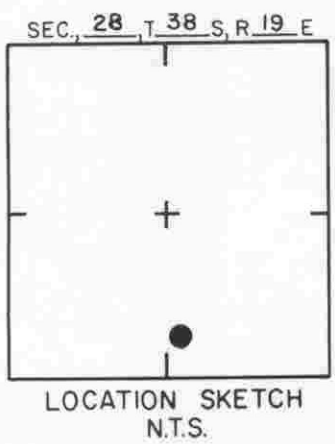
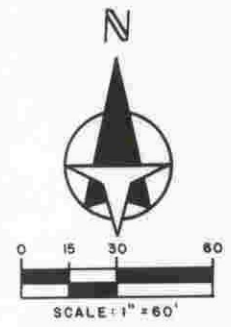


- 1=84.0
- 2=11.2 ROOFING NAIL
- 3=73.7



				<b>SARASOTA COUNTY</b> TRANSPORTATION DEPARTMENT ENGINEERING DIVISION		ELEV.
						17.08
REVISIONS				<b>BENCH MARK DATA SHEET</b>		BM. NO.
				DATE DRAWN: 2-6-87 BY: RJJ		378
DATE	TYPE	FB. PG.	BY	REF: SWFWMD GWL-25	DATE 10/80	ELEV. BASED ON B.M. NO. DOT

TO REACH THE MARK FROM AT INTER I-75 S. BOUND & LAUREL RD,  
 STA IS PR NAIL SET FLUSH IN ASPH. PAV.



1 = 8.4  
 2 = 9.0  
 3 = 52.4



**SARASOTA COUNTY**  
 TRANSPORTATION DEPARTMENT  
 ENGINEERING DIVISION

**BENCH MARK  
 DATA SHEET**

ELEV.  
 40.737'

DATE DRAWN: 9-15-87 BY: RJJ

BM. NO.

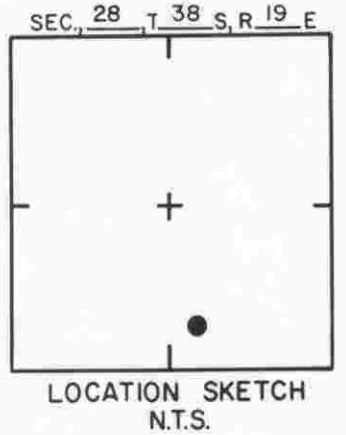
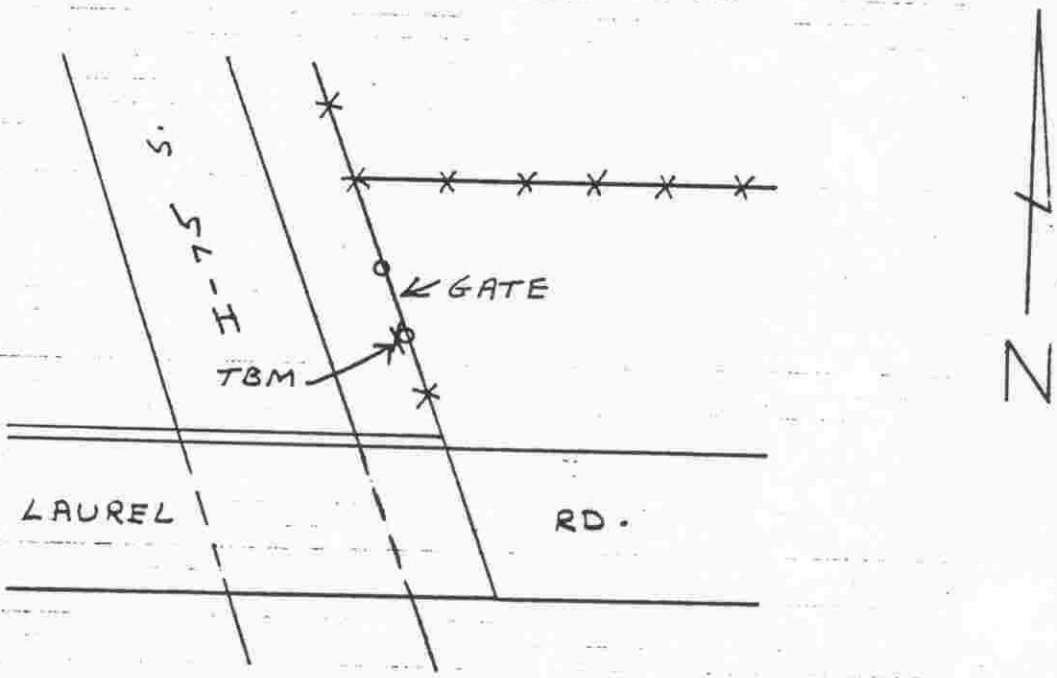
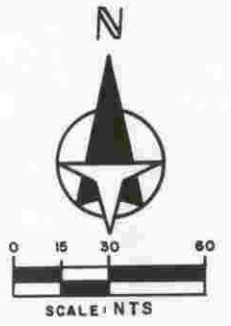
DATE	TYPE	FB. PG.	BY
REVISIONS			

REF: FB. PG. 24 DATE

378A

ELEV. BASED ON B.M. NO. BM 378B

TO REACH THE MARK ~~FROM~~ INTER. LAUREL RD. + I-75  
<sup>NORTH</sup>  
~~SOUTH~~ BOUND, TBM IS A R.R. SPIKE W. SIDE  
 OF GATE POST



**SARASOTA COUNTY**  
 TRANSPORTATION DEPARTMENT  
 ENGINEERING DIVISION

				BENCH MARK DATA SHEET		ELEV.
						16.17'
REVISIONS				DATE DRAWN: 2-9-87	BY: RJJ	BM. NO.
				REF: SWFWMD GWL 109	DATE 11/80	378B
				ELEV. BASED ON B.M. NO. NOS		