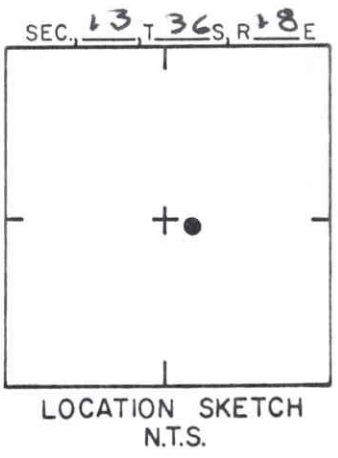
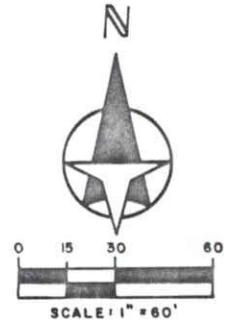


SEC

MATCH SEE SHEET 3 OF 6 SHEETS



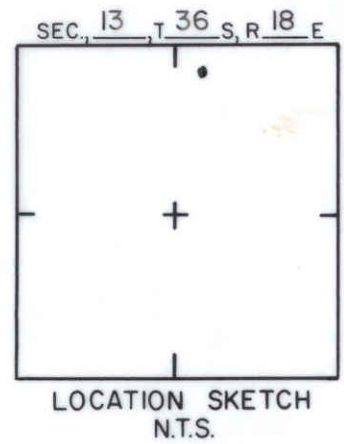
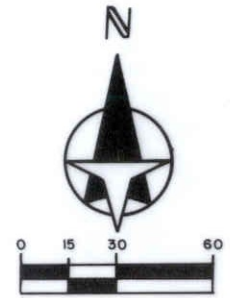
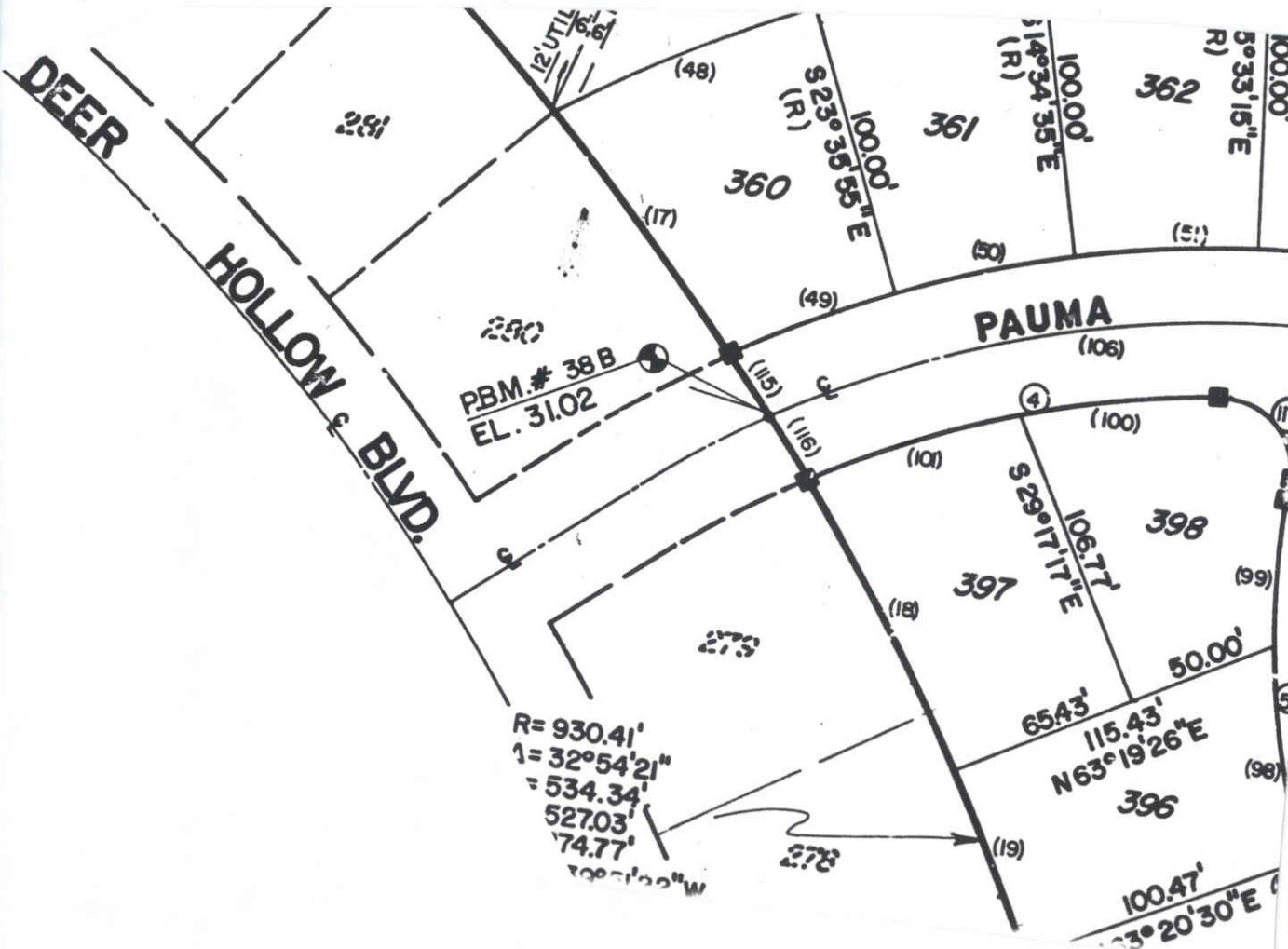
R = 930.40'  
 Δ = 32°54'21"  
 A = 534.34'  
 CH = 527.03'  
 CHB = S39°51'22"E

R = 680.40  
 Δ = 46°07'08"  
 A = 547.67'  
 CH = 533.01'  
 CHB = N46°27'46"W

NOT SUBDIVID.

SARASOTA COUNTY  
 TRANSPORTATION DEPARTMENT  
 ENGINEERING DIVISION

				BENCH MARK DATA SHEET		ELEV.
						30.58
				DATE DRAWN: JULY 1985 BY: WFW		BM. NO.
				REF: PB. 30 PG. 26-26E DATE 7-17-85		38A
REVISIONS				ELEV. BASED ON B.M. NO. 46A		



SARASOTA COUNTY  
TRANSPORTATION DEPARTMENT  
ENGINEERING DIVISION

BENCH MARK  
DATA SHEET

ELEV.

31.02'

DATE DRAWN: 12-22-87 BY: RAK

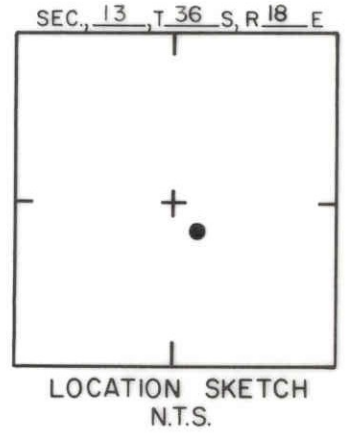
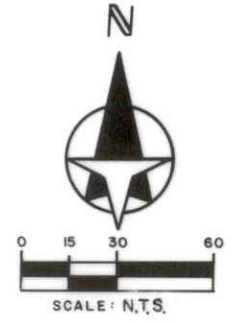
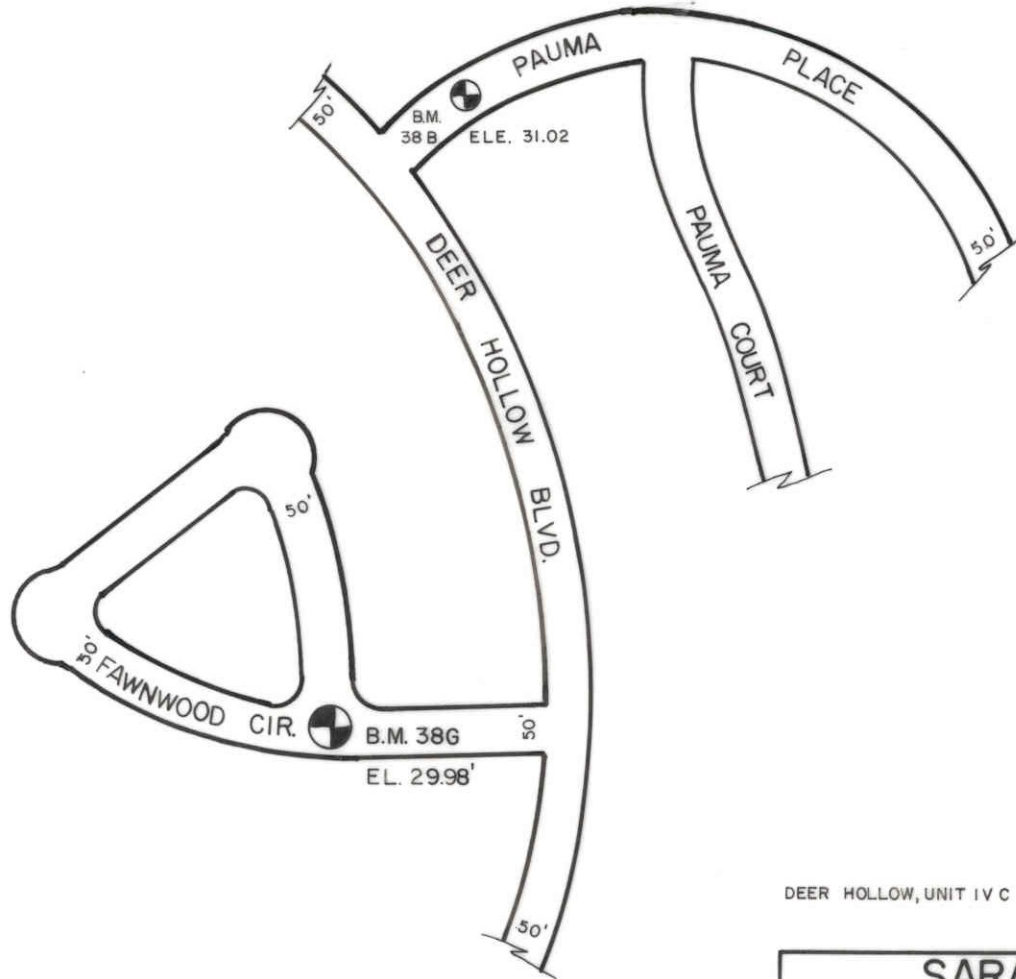
BM. NO.

REF: F.B. 30 PG. 26 DATE

38 B

DATE	TYPE	F.B. PG.	BY
REVISIONS			

ELEV. BASED ON B.M. NO. 46 A



DEER HOLLOW, UNIT IV C P.B. 33/32

**SARASOTA COUNTY**  
 TRANSPORTATION DEPARTMENT  
 ENGINEERING DIVISION

**BENCH MARK  
 DATA SHEET**

ELEV.  
 29.98'  
 B.M. NO.  
 38-G

DATE DRAWN: 9-27-89 BY: KLP

REF: F.B. PG. DATE

ELEV. BASED ON B.M. NO. 46 A EL. 31.12'

DATE	TYPE	F.B. PG.	BY
REVISIONS			