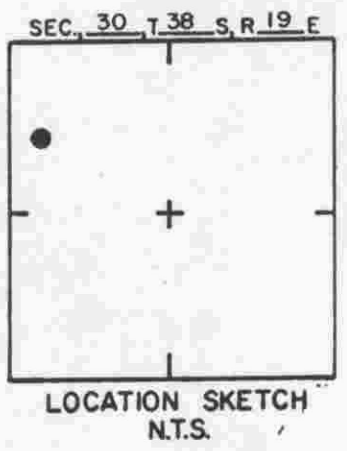
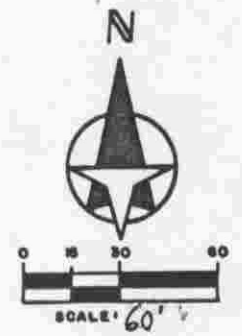


NOT IN
EASTERLY 12
MISSION VALLEY ESTATES
SECTION "A"

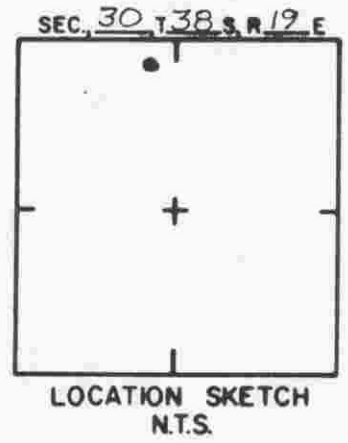
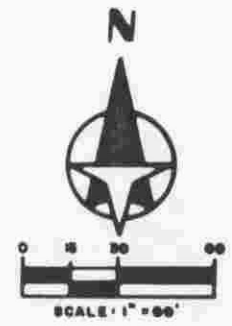
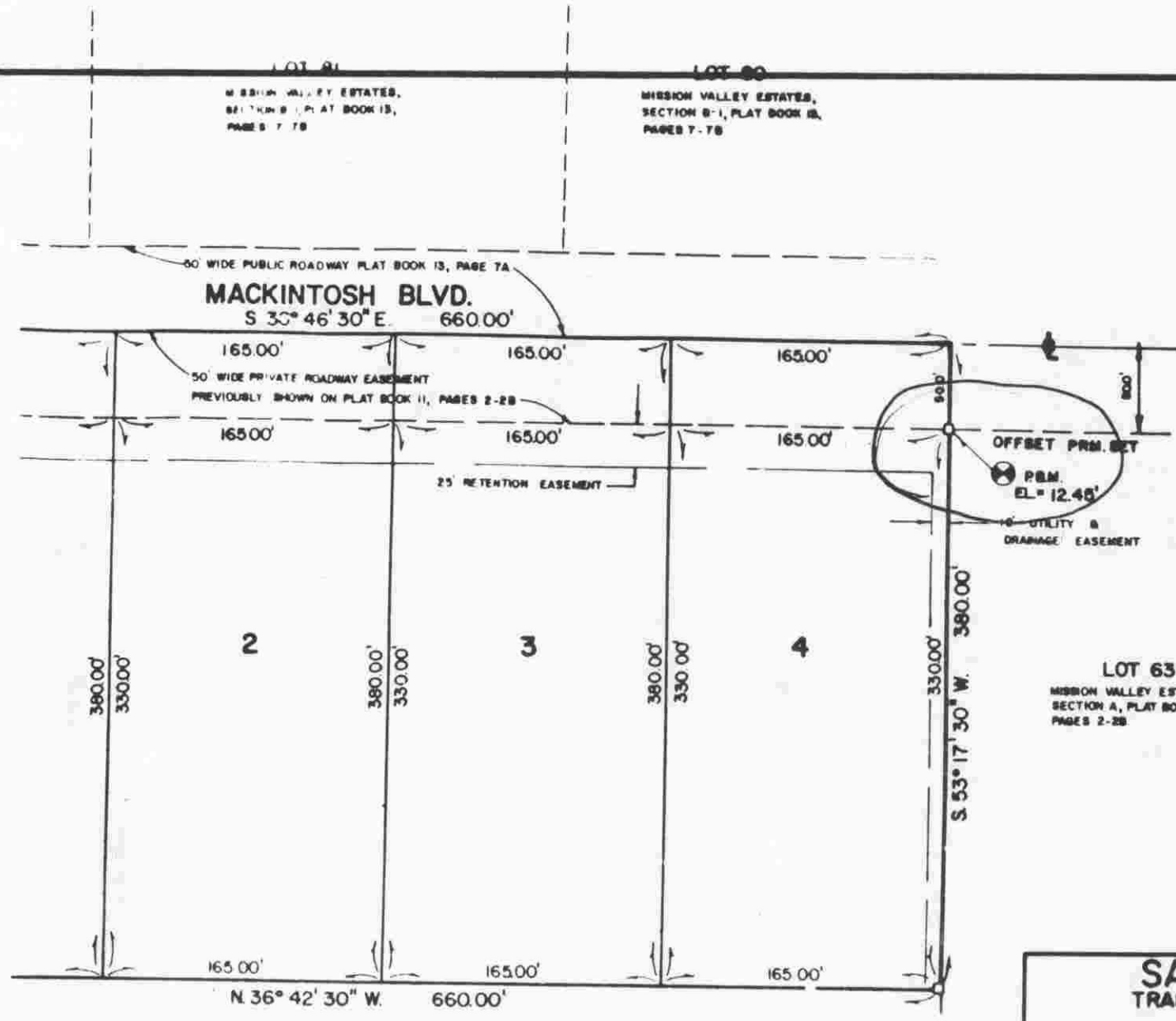


MISSION VALLEY ESTATES
IN "A" P.B. 11/2-28

60' PRIVATE ROADWAY EASEMENT
PREVIOUSLY SHOWN ON P.B. 11/2-28

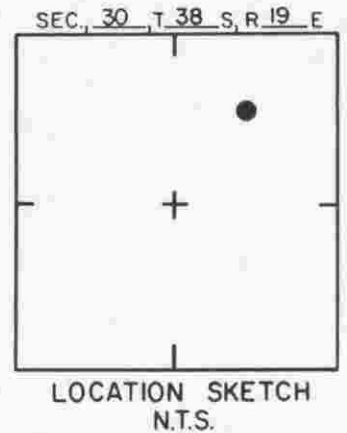
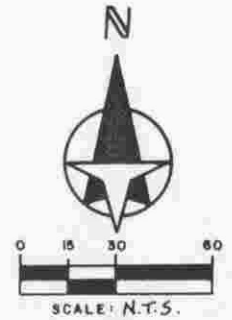
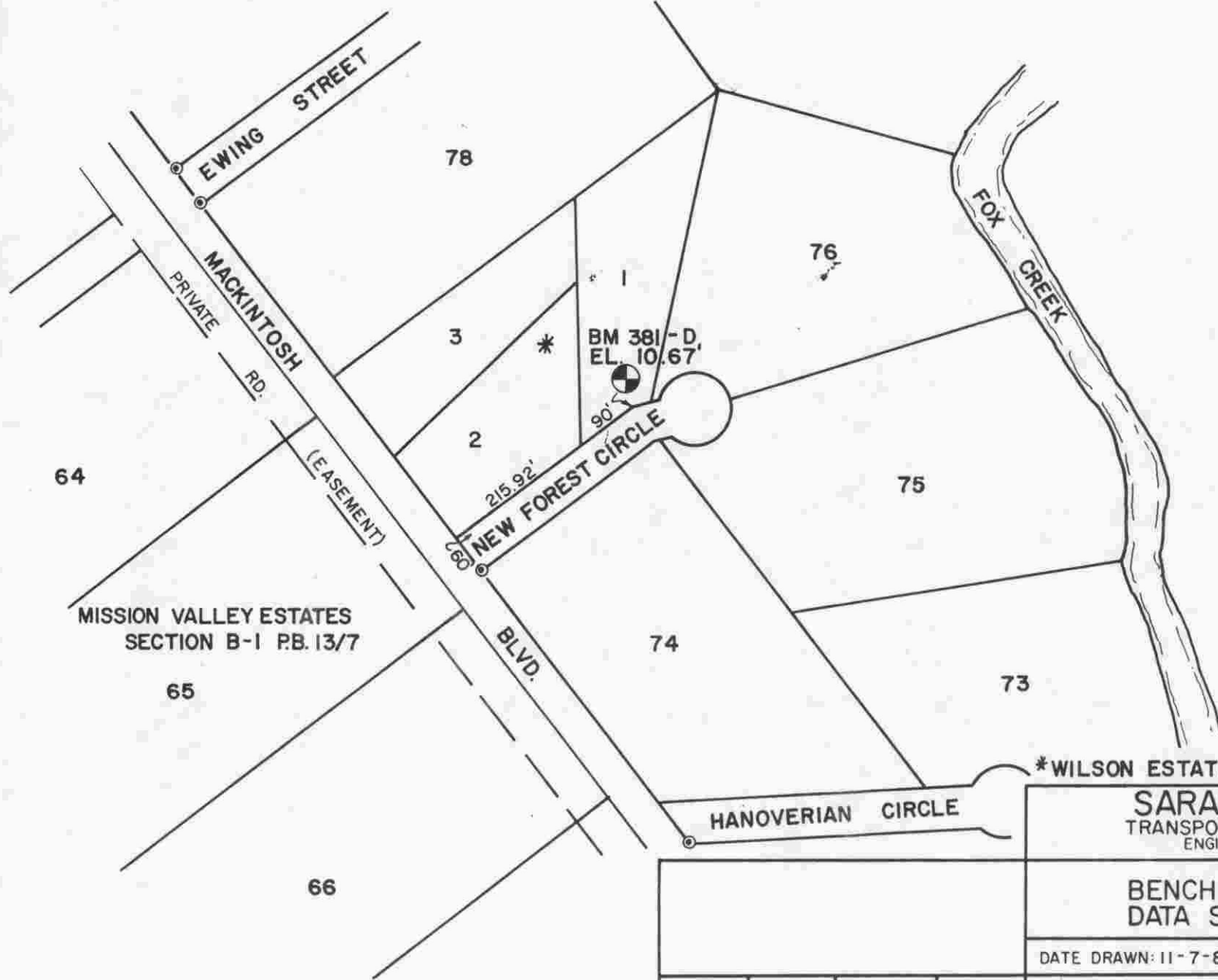
SARASOTA COUNTY
TRANSPORTATION DEPARTMENT
ENGINEERING DIVISION

CLIFT SUBDIVISION				BENCH MARK DATA SHEET		ELEV.
						11.93
DATE DRAWN: 10-24-85		BY: WFW		BM. NO.		
DATE	TYPE	FB. PG.	BY	REF: PB. 28	PG. 47	DATE
REVISIONS				ELEV. BASED ON B.M. NAT. GEO.		381 A



SARASOTA COUNTY
TRANSPORTATION DEPARTMENT
ENGINEERING DIVISION

MACKINTOSH SUBDIVISION				BENCH MARK DATA SHEET		ELEV. 12.45'
				DATE DRAWN: 12/8/86 BY: CC		
DATE	TYPE	FB. PG.	BY	REF: PB. 31 PG. 33A DATE		ELEV. BASED ON BM. NO. <i>N.G.V.D. 1929</i>
REVISIONS						



* WILSON ESTATES PB. 33/36

SARASOTA COUNTY
TRANSPORTATION DEPARTMENT
ENGINEERING DIVISION

**BENCH MARK
DATA SHEET**

DATE DRAWN: 11-7-89 BY: KLP

SET BY: LESLIE, HICKS, & STRAYER

ELEV. BASED ON BM. NO. 383 EL. 13.56'

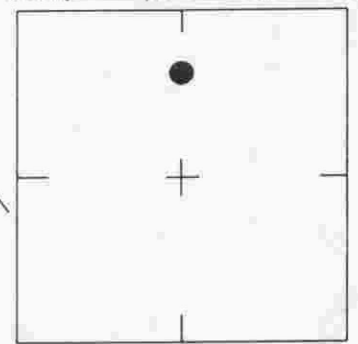
ELEV.
10.67'
BM. NO.
381-D

DATE	TYPE	F.B. PG.	BY
REVISIONS			



SCALE: N.T.S.

SEC., 30 , T 38 S, R 18 E



LOCATION SKETCH
N.T.S.

LAUREL ACRES
PLAT BOOK 35, PAGE 18
A REPLAT OF
MISSION VALLEY ESTATES

SARASOTA COUNTY TRANSPORTATION DEPARTMENT ENGINEERING DIVISION, SURVEY/MAPPING SECTION	
BENCH MARK DATA SHEET	ELEV. 13.58
DATE DRAWN: 09/09/91 BY: GES	B.M. NO. 381-E
REF.: PB. 35 PG. 18 DATE: 07/11/91	
ELEV. BASED ON B.M. NO. SARCO 360	

REVISIONS / REMARKS

SET BY: LESLIE, HICKS, STRAYER, & ASSOC.