

PRIVATE ROADWAY EASEMENT  
 PREVIOUSLY SHOWN ON PLAT BOOK II, PAGES 2-2C

**SARASOTA COUNTY**  
 TRANSPORTATION DEPARTMENT  
 ENGINEERING DIVISION

**BENCH MARK  
 DATA SHEET**

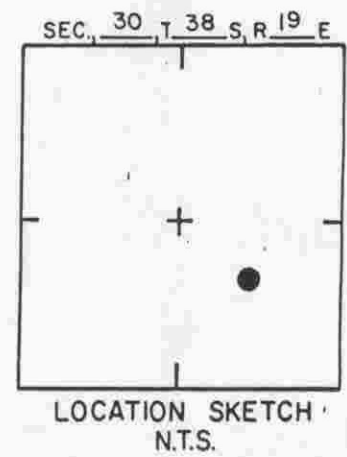
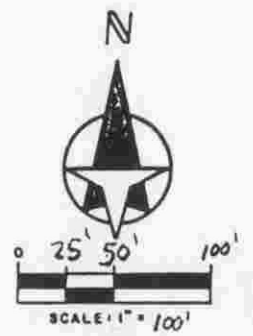
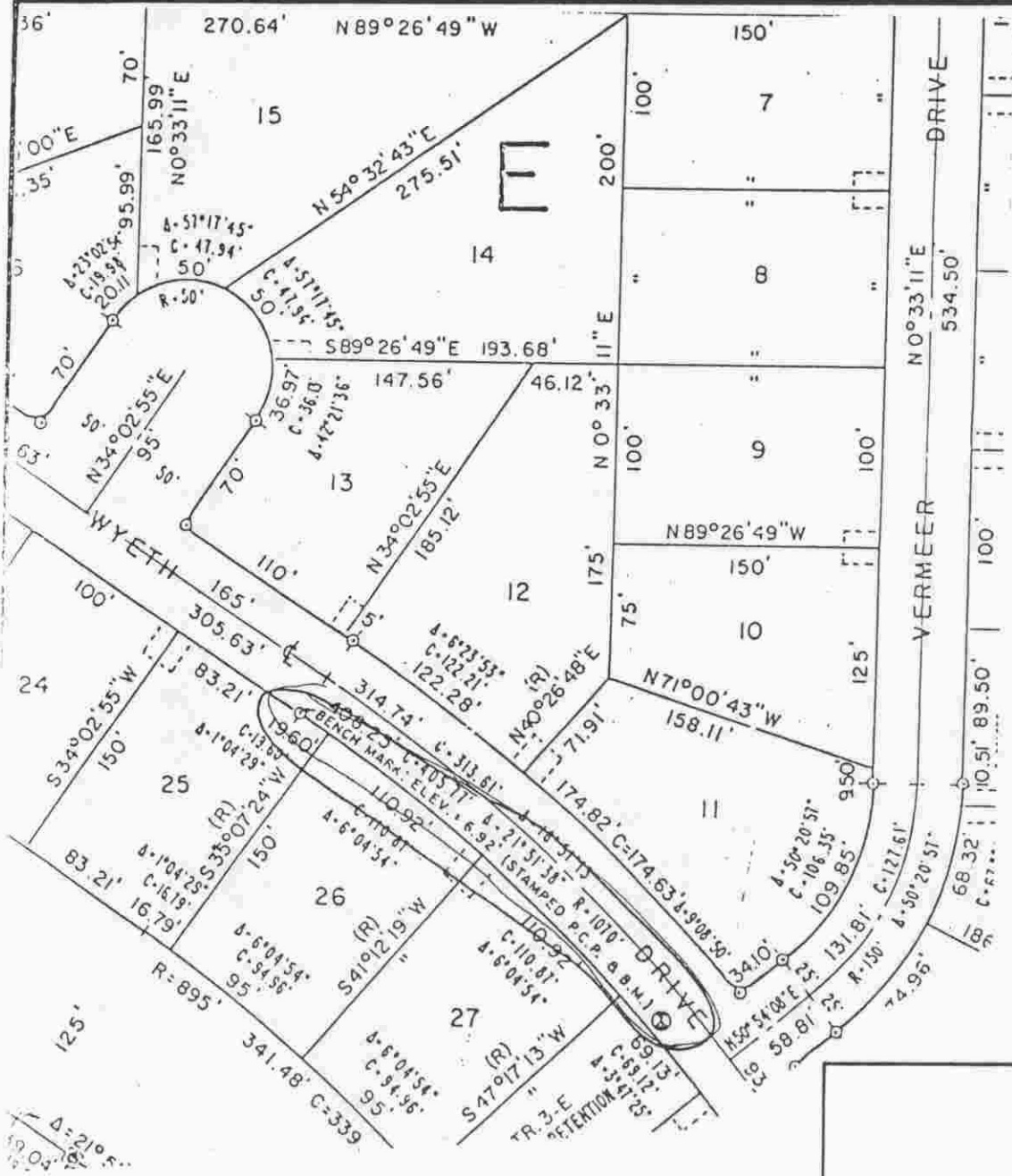
ELEV.  
 12.82'  
 BM. NO.  
 382 A

DATE DRAWN: 10/85 BY: PJB

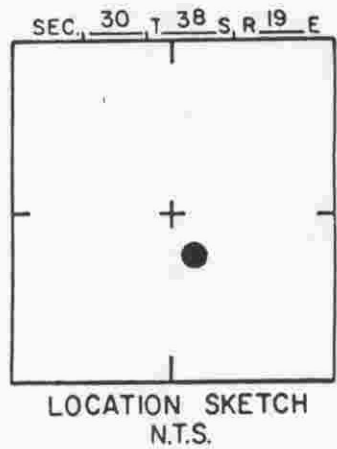
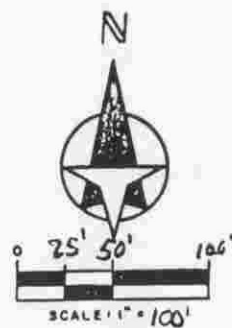
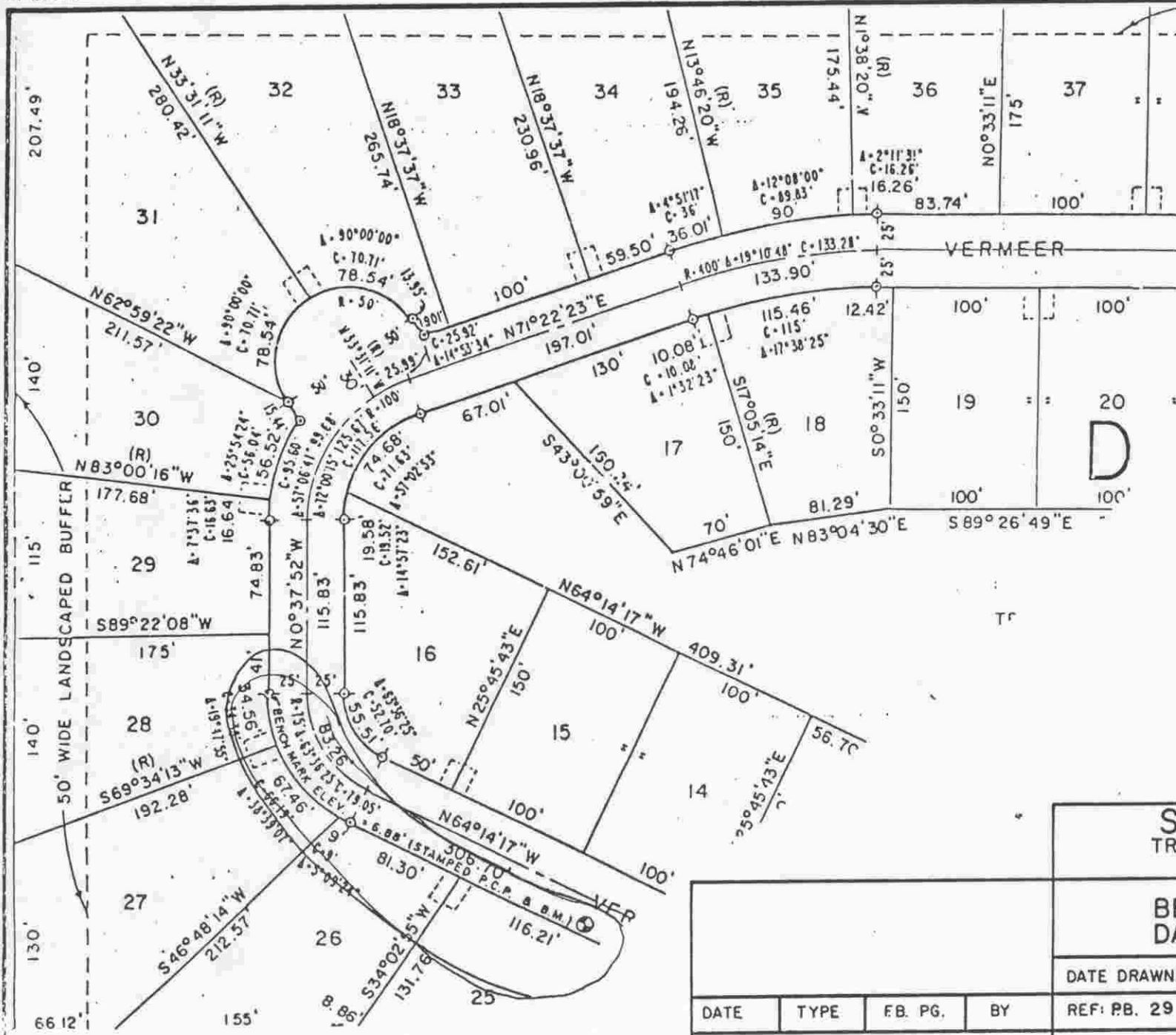
REF: RB. 29 PG. 32 DATE 10/85

ELEV. BASED ON BM. N.G.V.D.

DATE	TYPE	FB. PG.	BY
REVISIONS			



				<b>SARASOTA COUNTY</b> TRANSPORTATION DEPARTMENT ENGINEERING DIVISION			ELEV.
							6.92'
				<b>BENCH MARK DATA SHEET</b>			BM. NO.
							382B
				DATE DRAWN: 10/85	BY: PJB		
DATE	TYPE	FB. PG.	BY	REF: PB. 29	PG. 41	DATE 10/85	
REVISIONS				ELEV. BASED ON BM. N.G.V.D.			



**SARASOTA COUNTY**  
TRANSPORTATION DEPARTMENT  
ENGINEERING DIVISION

**BENCH MARK  
DATA SHEET**

DATE DRAWN: 10/85		BY: PJB		ELEV.
REF: PB. 29		PG. 11		DATE 10/85
ELEV. BASED ON B.M.				N.G.V.D.
				382C

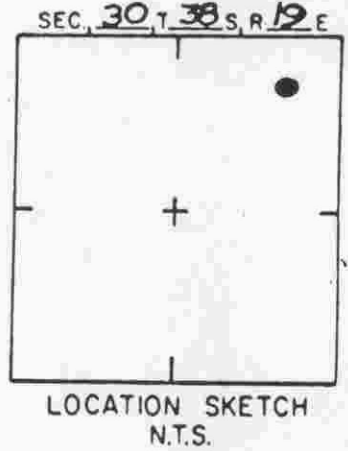
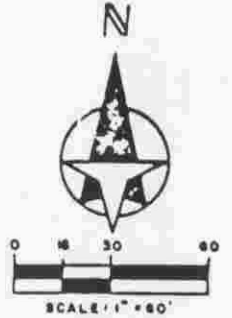
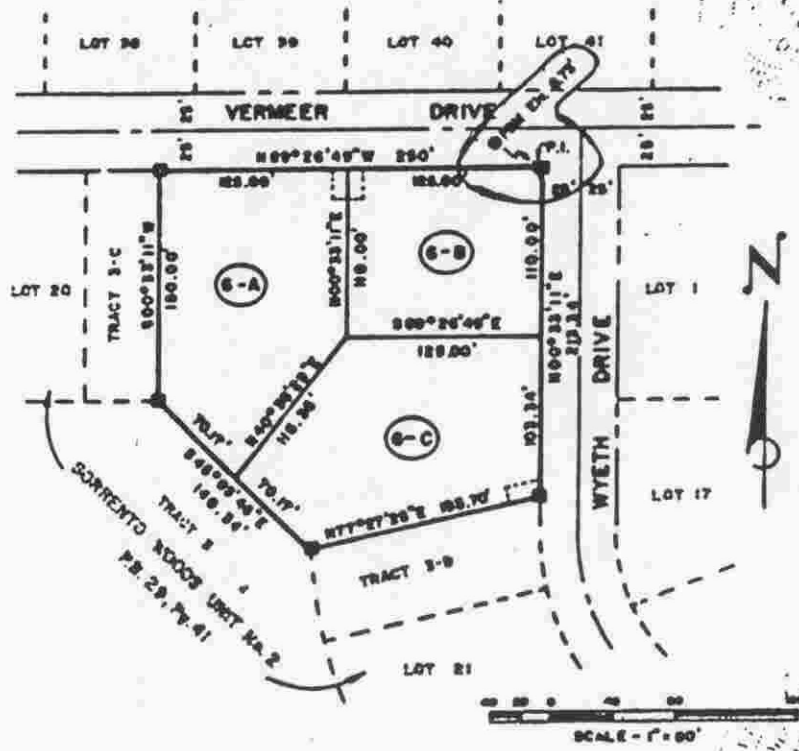
DATE	TYPE	FB. PG.	BY
REVISIONS			

**DESCRIPTION**

A Parcel of land lying in Section 30, Township 30 South, Range 19 East, Sarasota County, Florida, being more particularly described as follows:

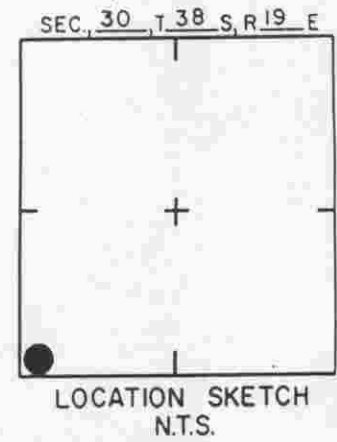
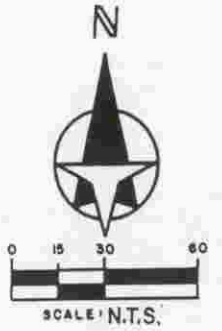
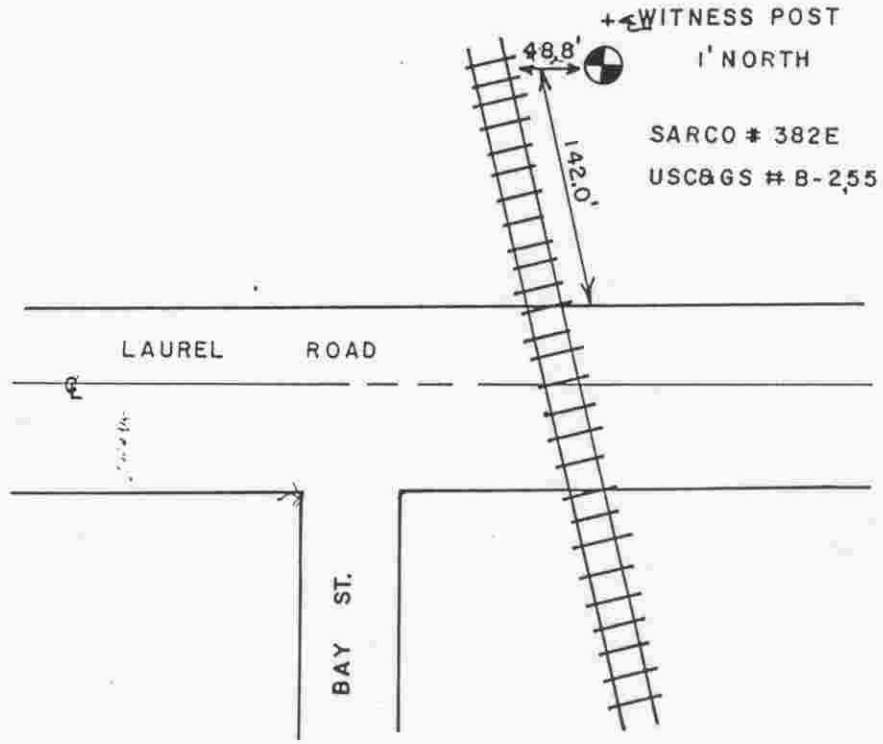
Tract 6, Sorrento Woods Unit No. 2, Plat Book 29, Page 41, Public Records of Sarasota County, Florida, and containing 1.25 acres more or less.

4.  
M.  
of  
or  
shy  
line  
his  
note



<b>SARASOTA COUNTY</b> TRANSPORTATION DEPARTMENT ENGINEERING DIVISION			
<b>BENCH MARK DATA SHEET</b>			ELEV <b>6.75'</b>
DATE DRAWN:		BY:	
REF: <b>PL. 31</b>	PG. <b>39</b>	DATE <b>2/87</b>	
REVISIONS			BM. NO. <b>382</b>
ELEV. BASED ON BM. NO.			

DATE	TYPE	FB. PG.	BY



SARASOTA COUNTY  
TRANSPORTATION DEPARTMENT  
ENGINEERING DIVISION

BENCH MARK  
DATA SHEET

ELEV.

13.14'

DATE DRAWN: 1-16-87 BY: RJJ

BM. NO.

REF: FB. 259 PG. 41 DATE 10-31-86

382E

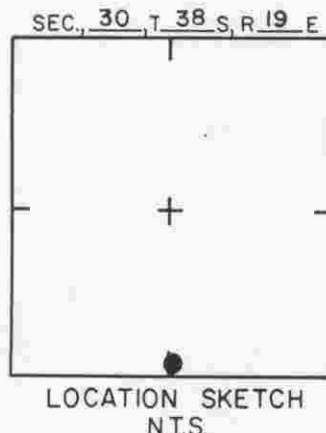
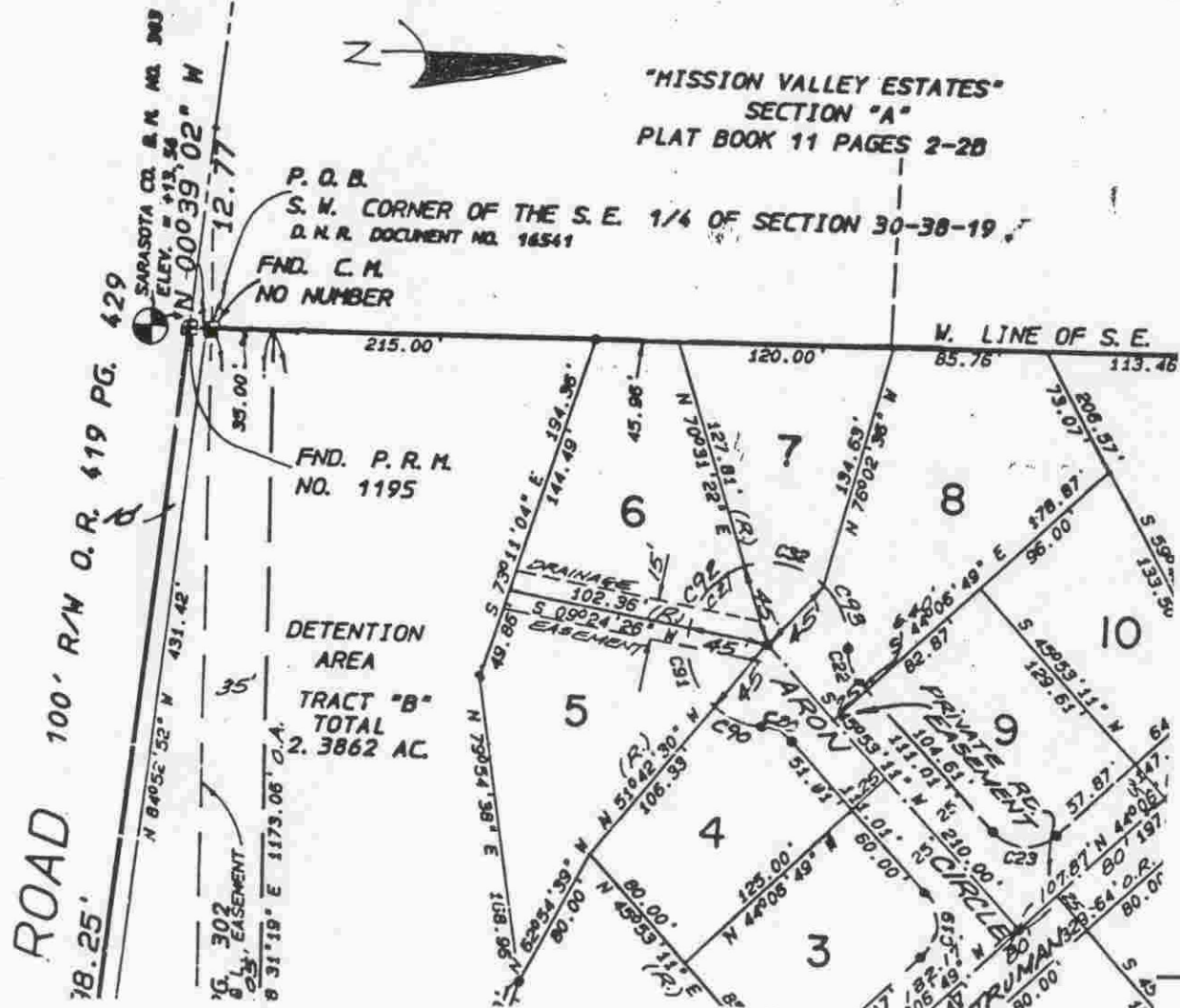
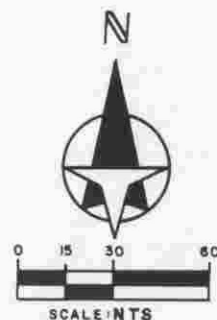
ELEV. BASED ON BM. NO. USC&GS B-255

DATE	TYPE	FB. PG.	BY
------	------	---------	----

REVISIONS

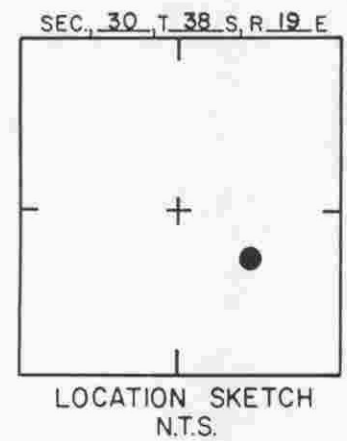
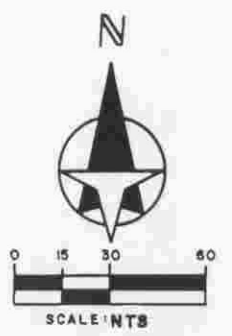
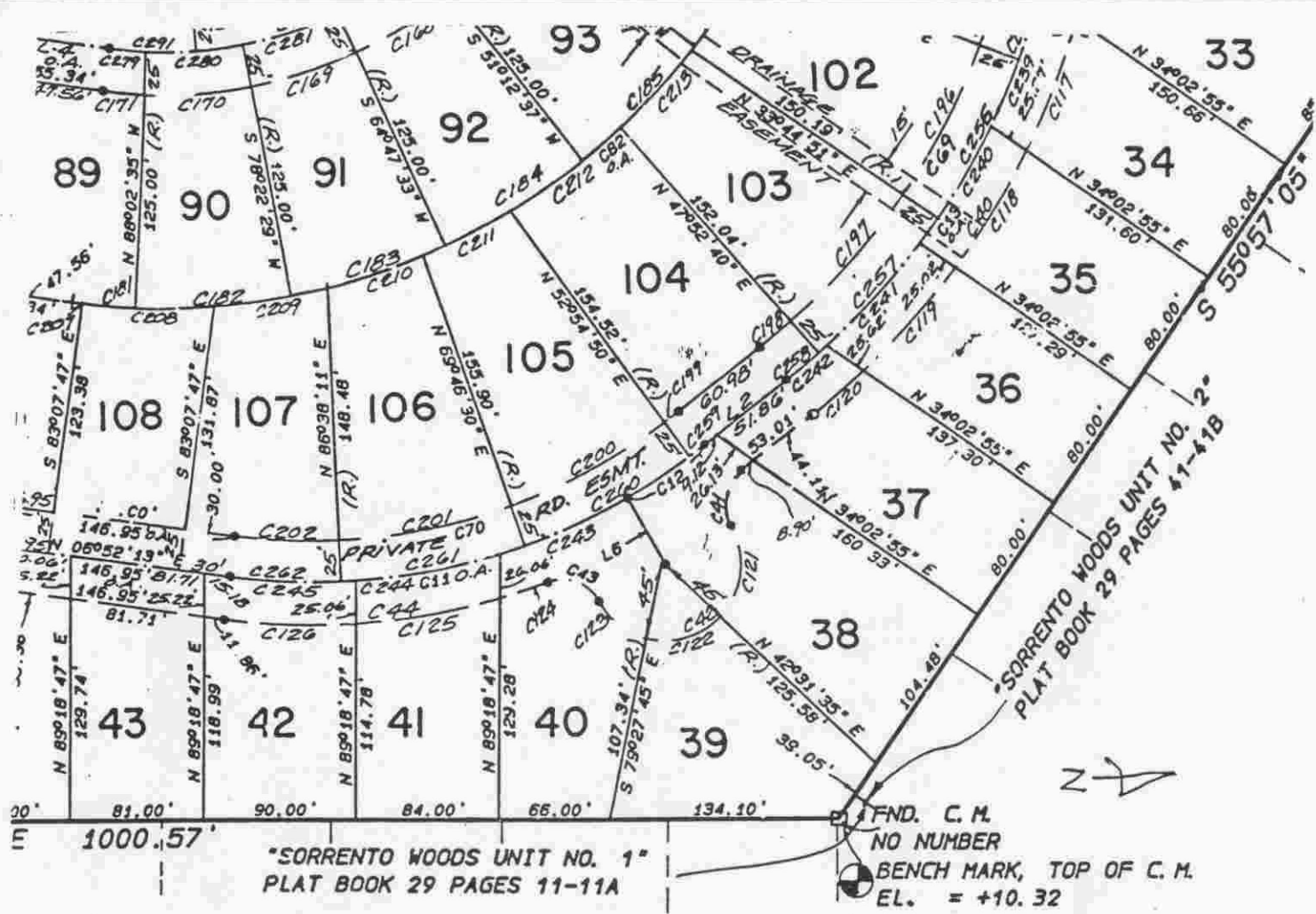
# A SUBDIVISION IN S

"MISSION VALLEY ESTATES"  
SECTION "A"  
PLAT BOOK 11 PAGES 2-28



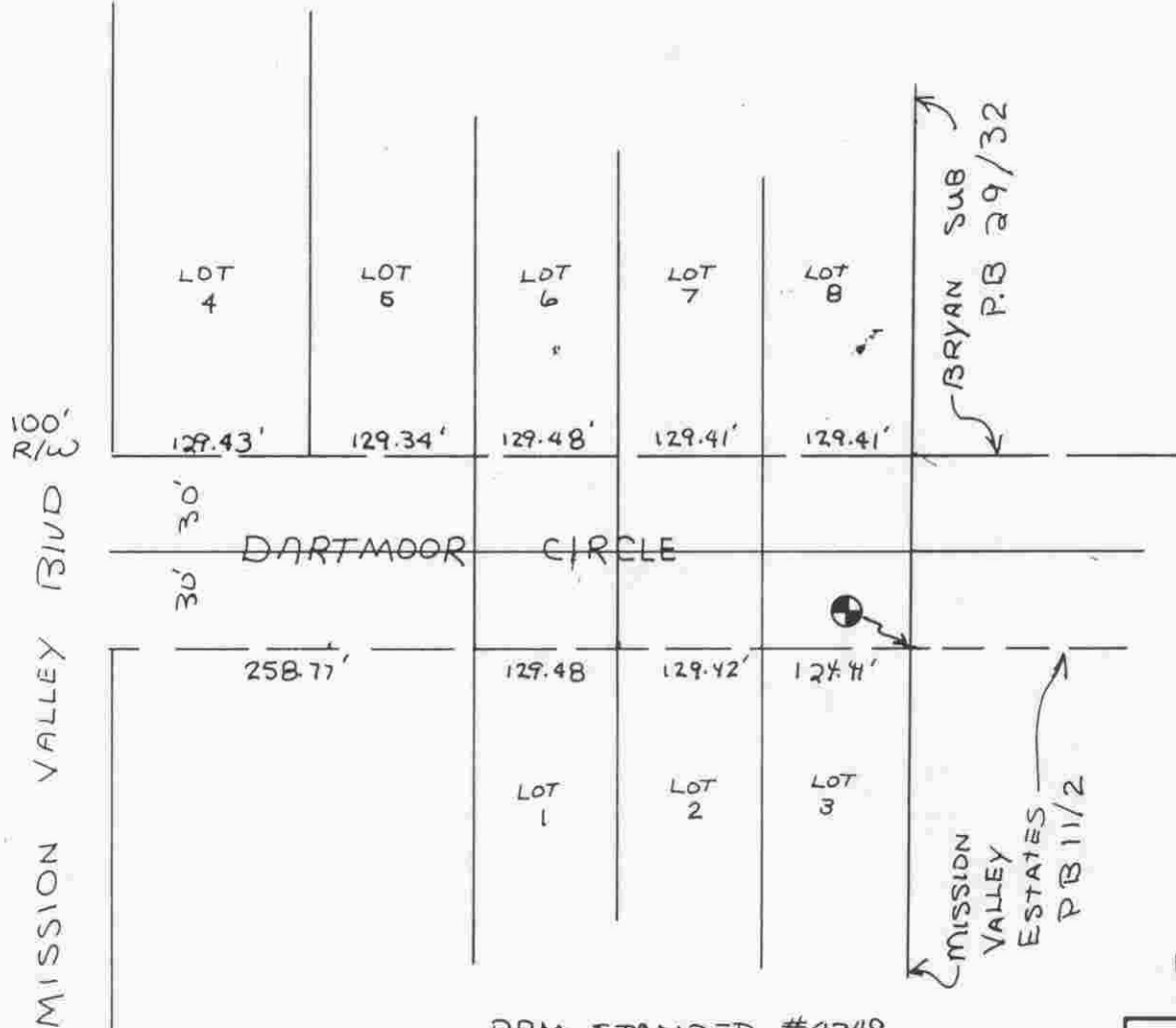
<b>SARASOTA COUNTY</b>			
TRANSPORTATION DEPARTMENT			
ENGINEERING DIVISION			
<b>BENCH MARK DATA SHEET</b>			ELEV.
			13.56'
DATE DRAWN: MAY 1987		BY: RJJ	
REF: FB.	PG.	DATE	
ELEV. BASED ON B.M. NO. SARCO 383			382 F'

DATE	TYPE	FB. PG.	BY
REVISIONS			

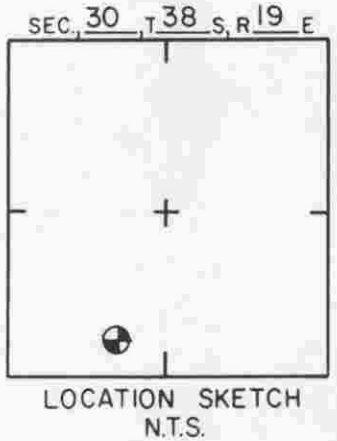
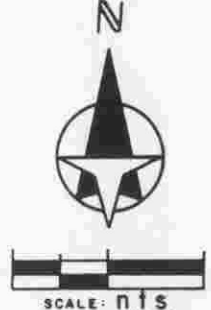


SARASOTA COUNTY  
TRANSPORTATION DEPARTMENT  
ENGINEERING DIVISION

BENCH MARK DATA SHEET		ELEV.
		10.32'
DATE DRAWN: MAY 1987 BY: R.J.J.		BM. NO.
DATE	TYPE	FB. PG.
BY	REF: FB.	PG. DATE
REVISIONS		382G
		ELEV. BASED ON B.M. NO. SARCO 383



PRM STAMPED #4349



EWING ESTATES: PB 33/27

**SARASOTA COUNTY**  
TRANSPORTATION DEPARTMENT  
ENGINEERING DIVISION

**BENCH MARK  
DATA SHEET**

ELEV.

13.54

BM. NO.

382 H

DATE DRAWN: 9/25/89 BY: SCB

REF: FB. PG. DATE

ELEV. BASED ON BM. NO. SARCO 383

DATE	TYPE	FB. PG.	BY
REVISIONS			