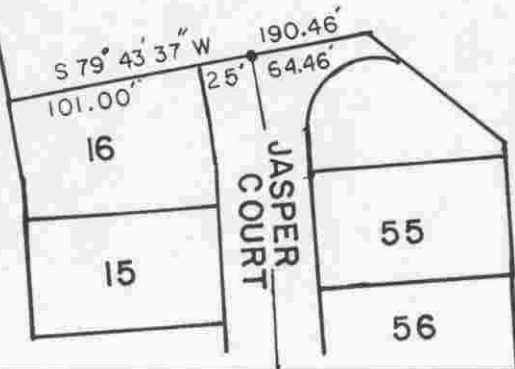
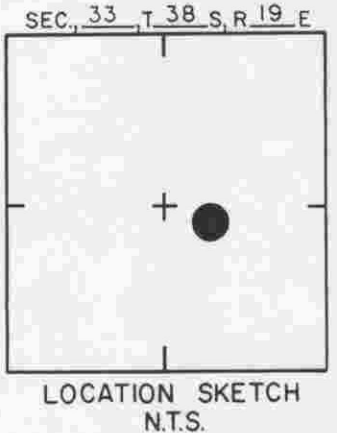
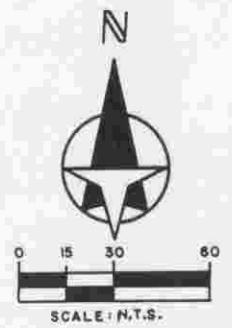


NOTE
 B.M., TOP OF GRATE INLET 38' E OF N.E. PROP COR.



DEVONSHIRE NORTH P B 34/15A

SARASOTA COUNTY
 TRANSPORTATION DEPARTMENT
 ENGINEERING DIVISION

**BENCH MARK
 DATA SHEET**

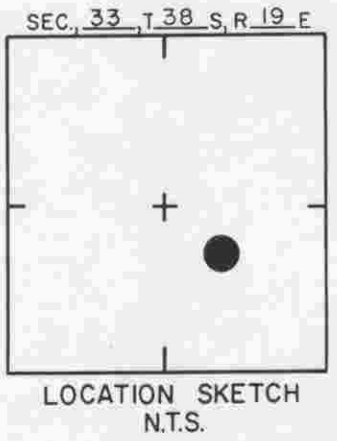
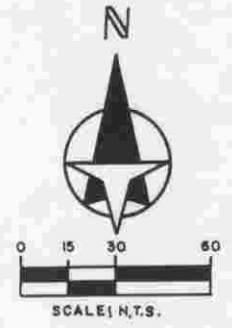
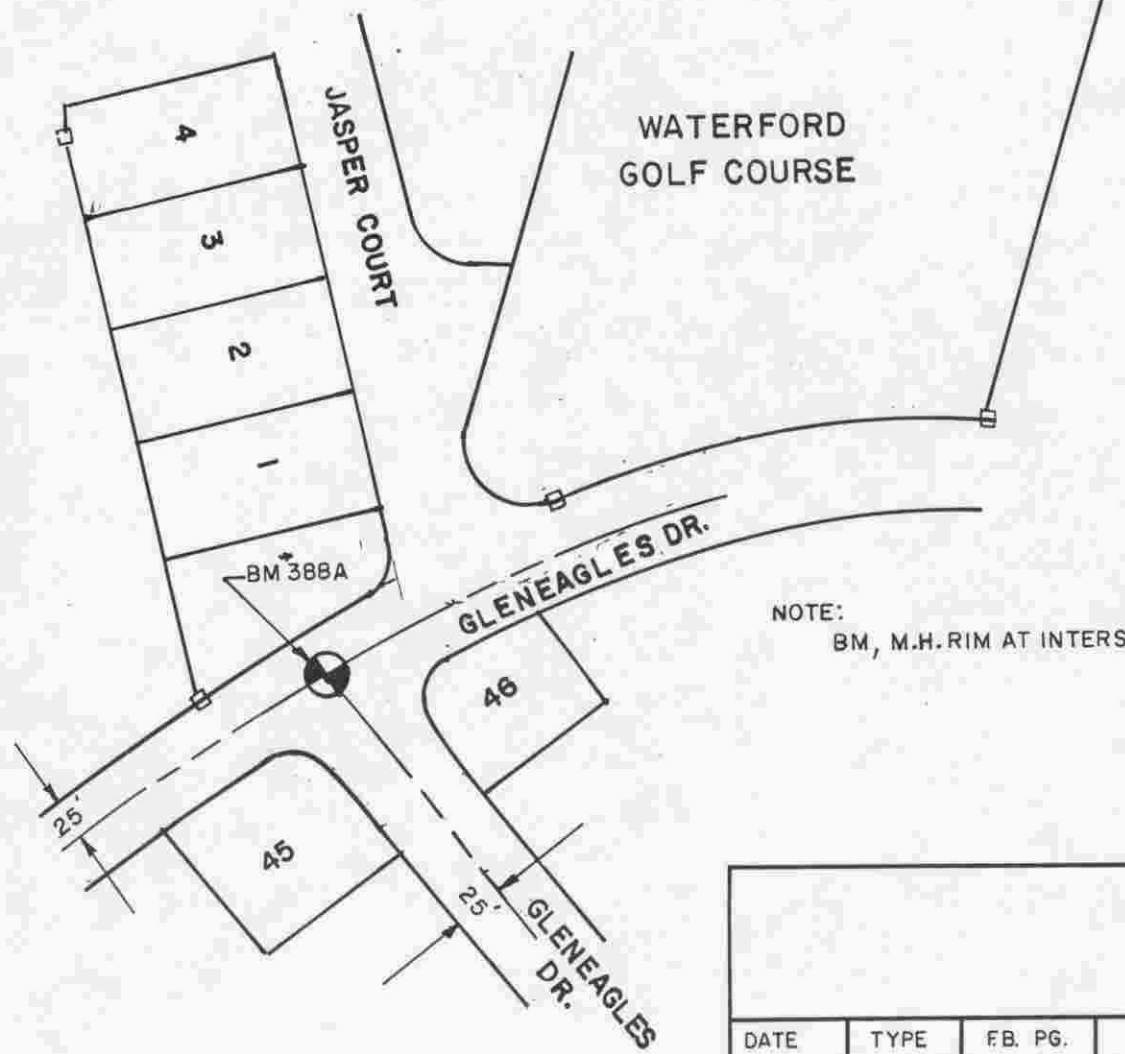
ELEV.
 11.27
 B.M. NO.
 388

DATE DRAWN: JUNE 13, 1990 BY: JFJ

SET BY CAMPBELL CONSULTANTS

ELEV. BASED ON B.M. NO.

DATE	TYPE	FB. PG.	BY
REVISIONS			



NOTE:
BM, M.H. RIM AT INTERSECTION OF GLENEAGLE & GLENEAGLE

DEVONSHIRE NORTH PB34/15A

SARASOTA COUNTY
TRANSPORTATION DEPARTMENT
ENGINEERING DIVISION

**BENCH MARK
DATA SHEET**

DATE DRAWN: JUNE 12, 1990 BY: JFJ

SET BY: CAMPBELL CONSULTANTS

ELEV. BASED ON B.M. NO.

ELEV.

16.11

BM. NO.

388 A

DATE	TYPE	FB. PG.	BY
REVISIONS			