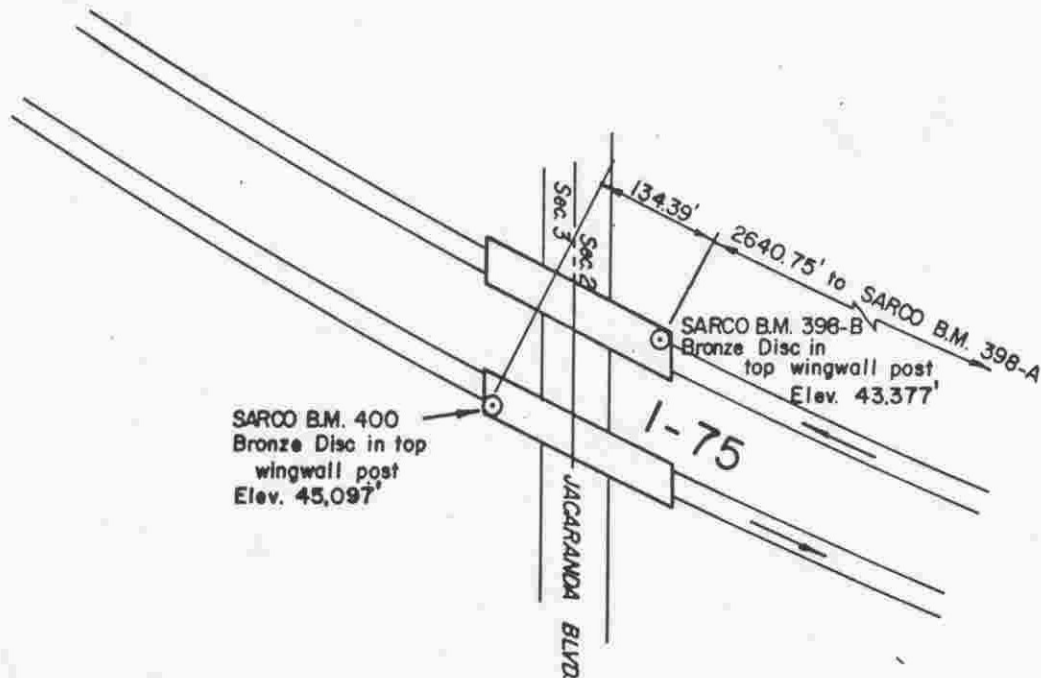
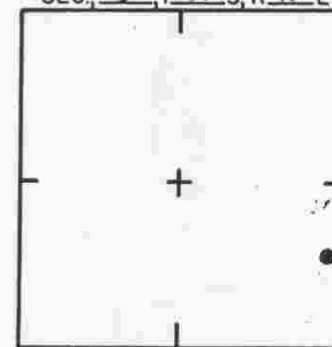


NOTE: B.M.'s from D.O.T. Sec. 17075-2405
R.P.B. 2/35a



SEC. 3 T. 39 S. R. 19 E



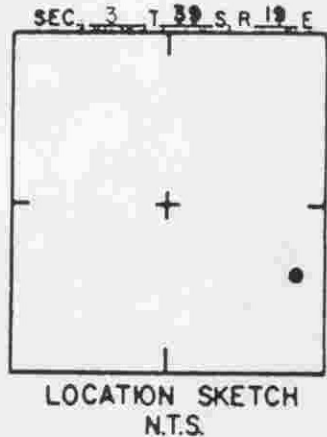
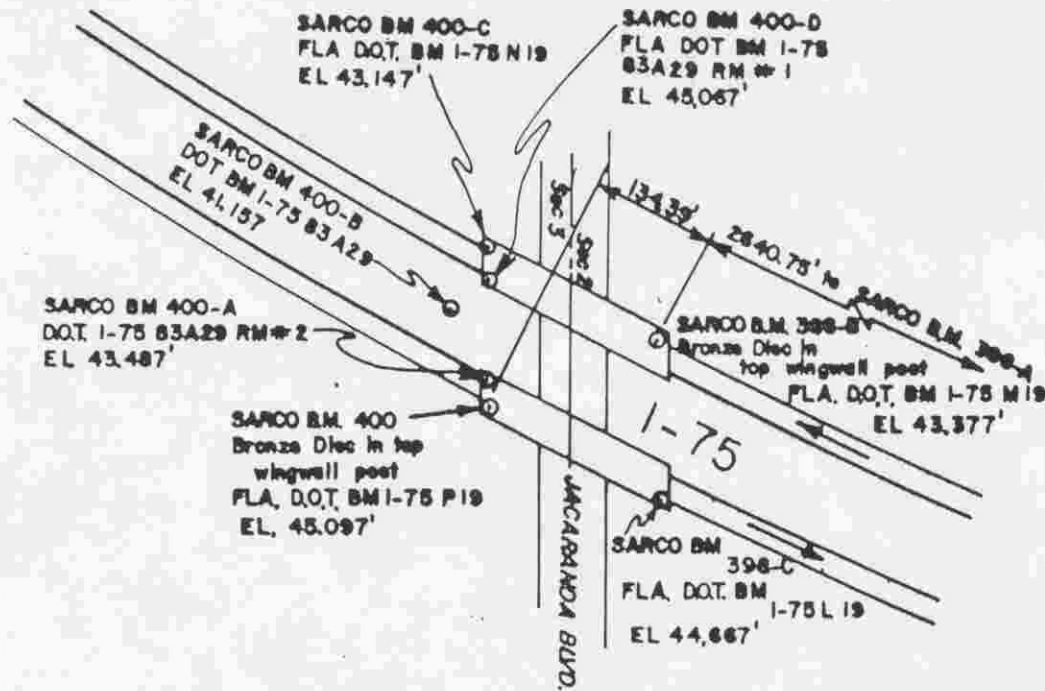
LOCATION SKETCH
N.T.S.

NOTE: Elevations based on preliminary unadjusted data from D.O.T.

SARASOTA COUNTY
TRANSPORTATION DEPARTMENT
ENGINEERING DIVISION

				BENCH MARK DATA SHEET			ELEV.
							45,097'
7/24/87 EL CHANGED FROM 44,85' TO 45,097' RJJ				DATE DRAWN:	BY:	BM. NO.	
DATE	TYPE	F.B. PG.	BY	REF: F.B.	PG.	DATE	400
REVISIONS				ELEV. EST. BY D.O.T.			

NOTE: Elevations based on preliminary unadjusted data from D.O.T.



SARASOTA COUNTY
TRANSPORTATION DEPARTMENT
ENGINEERING DIVISION

BENCH MARK
DATA SHEET

ELEV.
43.487'

DATE DRAWN: BY:

BM. NO.

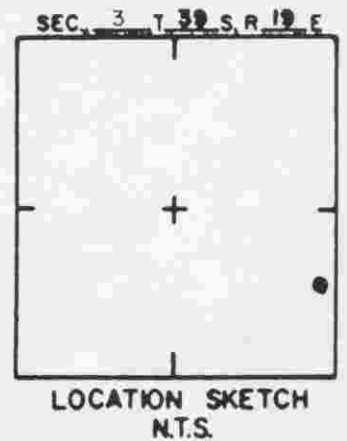
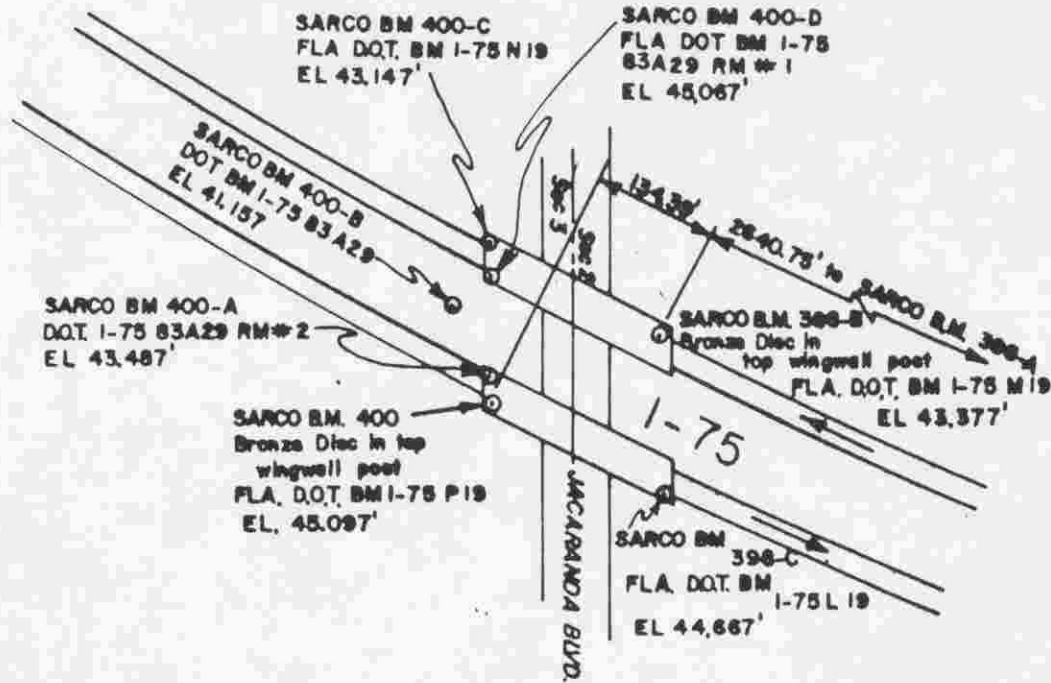
DATE	TYPE	FB. PG.	BY	REF. FB.	PG.	DATE
------	------	---------	----	----------	-----	------

400A

REVISIONS

ELEV. BASED ON BM. NO.

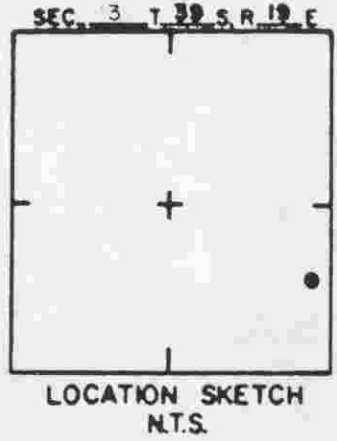
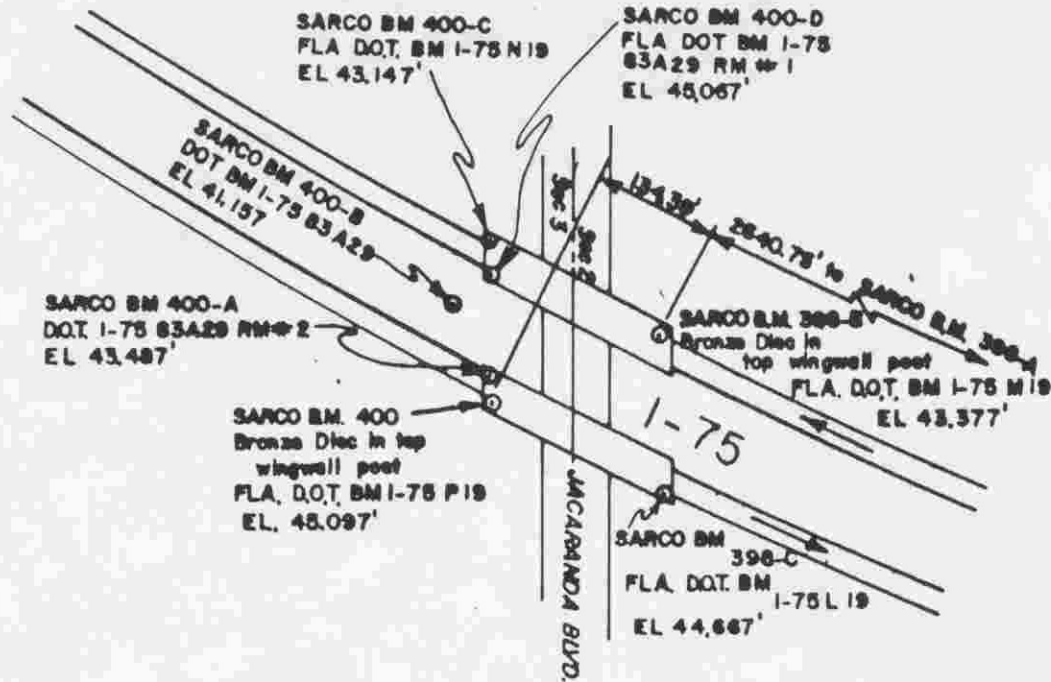
NOTE: Elevations based on preliminary unadjusted data from DOT.



SARASOTA COUNTY
TRANSPORTATION DEPARTMENT
ENGINEERING DIVISION

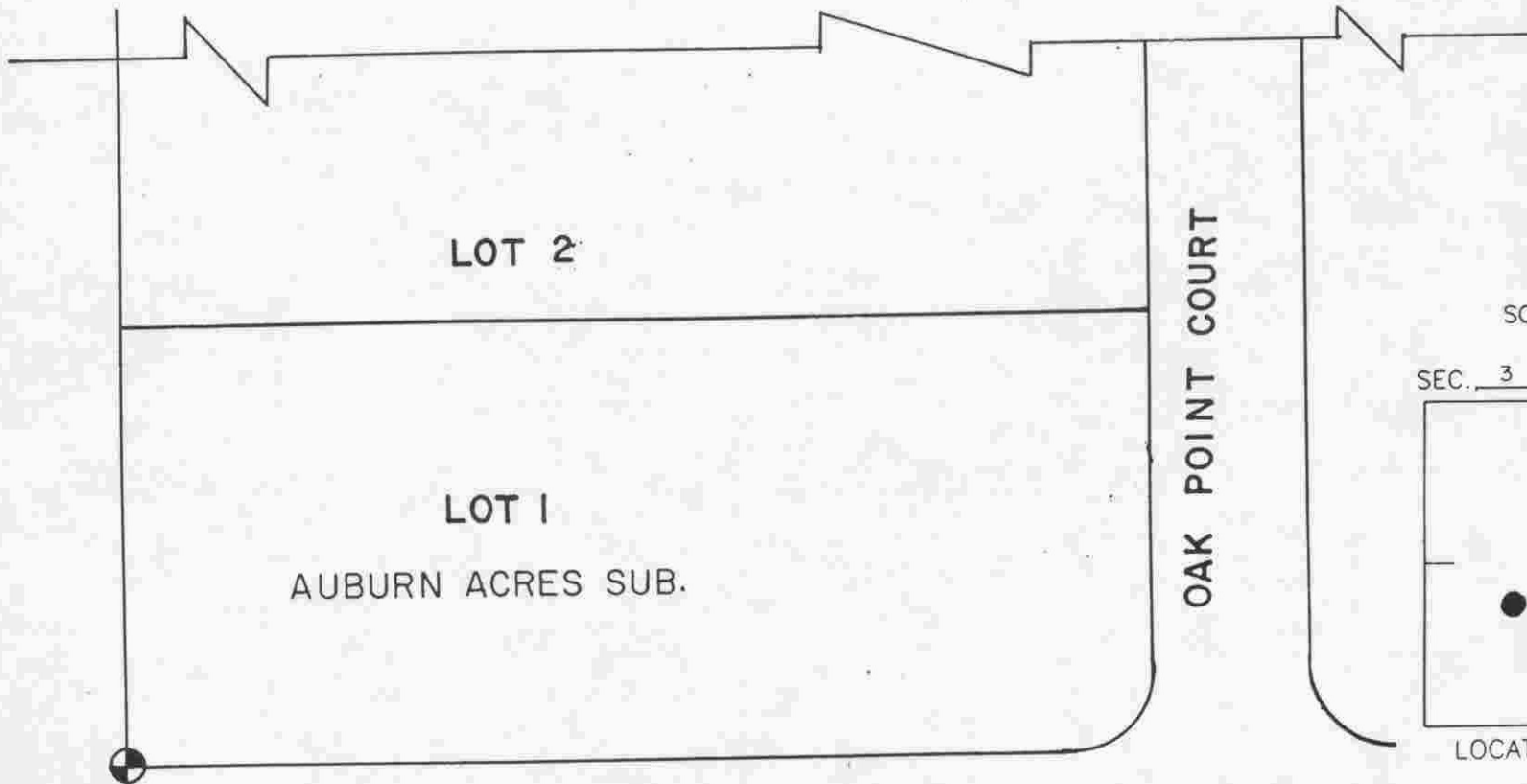
				BENCH MARK DATA SHEET			ELEV
							41.157'
				DATE DRAWN:		BY:	BM NO.
DATE	TYPE	F.B. PG.	BY	REF: F.B.	PG.	DATE	400B
REVISIONS				ELEV. BASED ON B.M. NO.			

NOTE: Elevations based on preliminary unadjusted data from DOT.



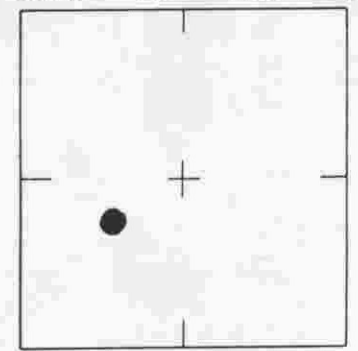
SARASOTA COUNTY
 TRANSPORTATION DEPARTMENT
 ENGINEERING DIVISION

				BENCH MARK DATA SHEET			ELEV.
				DATE DRAWN:	BY:		BM NO.
DATE	TYPE	FB. PG.	BY	REF: FB.	PG.	DATE	400C
REVISIONS				ELEV. BASED ON BM. NO.			



SCALE: N.T.S.

SEC. 3, T. 39 S., R. 19 E.



LOCATION SKETCH
N.T.S.

BM.
400F

KENNEDY DRIVE

OAK POINT COURT

LOT 2

LOT 1
AUBURN ACRES SUB.

SARASOTA COUNTY
TRANSPORTATION DEPARTMENT
ENGINEERING DIVISION, SURVEY/MAPPING SECTION

REVISIONS / REMARKS
CM
SET BY: LESLIE KICKS STRAYER & ASSO.

BENCH MARK DATA SHEET		ELEV.
DATE DRAWN: 4/30/91	BY: JFJ	10.36
REF.: 35	PG. 4 DATE: 4/11/91	B.M. NO.
ELEV. BASED ON B.M. NO.		400F