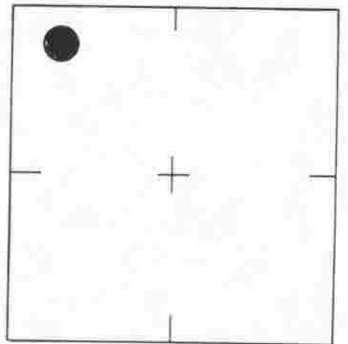


SCALE: N.T.S.

SEC. 4 T. 39 S. R. 19 E



LOCATION SKETCH
N.T.S.

DESCRIPTION

TOP OF GRATE INLET 12'S & 50' W OF NW COR.
LOT 5 EL 9.92'

REVISIONS / REMARKS

SARASOTA COUNTY TRANSPORTATION DEPARTMENT ENGINEERING DIVISION, SURVEY/MAPPING SECTION	
BENCH MARK DATA SHEET	ELEV. 9.92
DATE DRAWN: SEPT 1990 BY: JFJ	B.M. NO. 401
REF.: PB 34 PG. 28A DATE: JULY 1990	ELEV. BASED ON B.M. NO. 3

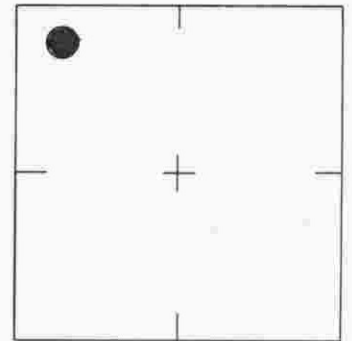
DESCRIPTION

TOP OF GRATE INLET 25' N & 50' W
OF NW COR. LOT 15 EL. 10.82



SCALE: N.T.S.

SEC. 4 T. 39 S. R. 19 E



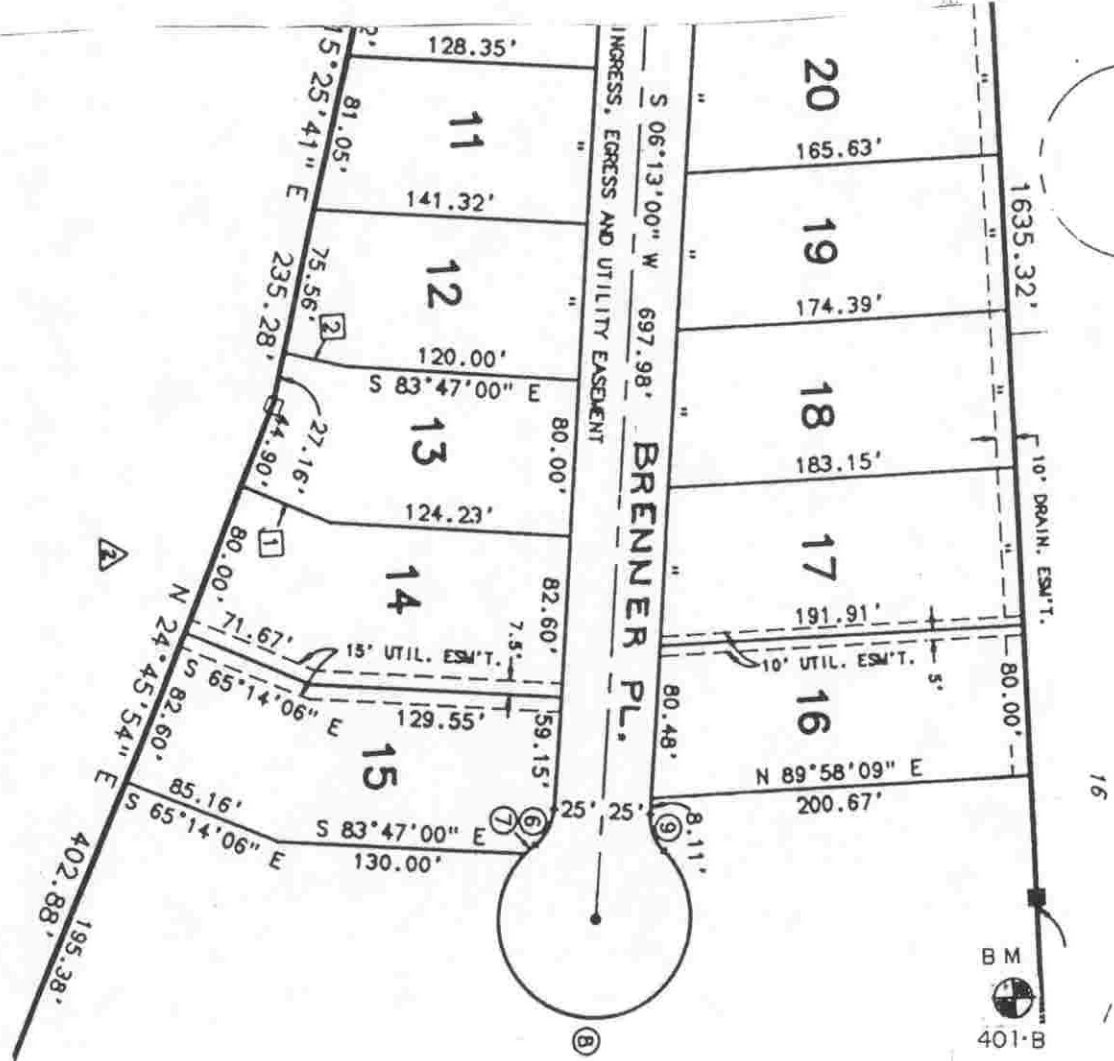
LOCATION SKETCH
N.T.S.

SARASOTA COUNTY

TRANSPORTATION DEPARTMENT
ENGINEERING DIVISION, SURVEY/MAPPING SECTION

REVISIONS / REMARKS
SET BY: CAMPBELL CONSULTANTS INC.

BENCH MARK DATA SHEET	
ELEV.	10.82
B.M. NO.	401-A
DATE DRAWN: SEPT 1990 BY: JFJ	
REF.: PB 34 PG. 28A DATE: JULY 1990	
ELEV. BASED ON B.M. NO. 2	

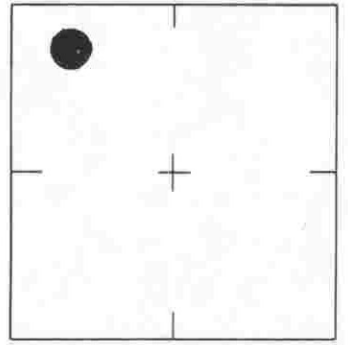


DESCRIPTION
 R.R.S. 117'S OF S.E. COR, LOT 16
 EL=15.20



SCALE: N.T.S.

SEC. 4 T. 39 S. R. 19 E



LOCATION SKETCH
 N.T.S.

SARASOTA COUNTY TRANSPORTATION DEPARTMENT ENGINEERING DIVISION, SURVEY/MAPPING SECTION	
BENCH MARK DATA SHEET	ELEV. 15.20
	B.M. NO. 401-B
DATE DRAWN: SEPT 1990 BY: J.F.J.	
REF.: PB 34 PG. 28A DATE: JULY 1990	
ELEV. BASED ON B.M. NO. 1	

REVISIONS / REMARKS



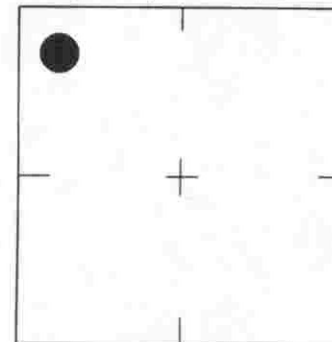
DESCRIPTION

TOP OF DROP INLET 30'± EAST OF NORTH EAST CORNER LOT 9 EL 10.16



SCALE: N.T.S.

SEC. 4 T. 39 S. R. 19 E



LOCATION SKETCH N.T.S.

SARASOTA COUNTY TRANSPORTATION DEPARTMENT ENGINEERING DIVISION, SURVEY/MAPPING SECTION	
BENCH MARK DATA SHEET	ELEV.
	10.11
	B.M. NO.
	401-C
DATE DRAWN: SEPT 1990 BY: JFJ	
REF.: P B 34 PG. 29 DATE: JULY 1990	
ELEV. BASED ON B.M. NO. 1	

REVISIONS / REMARKS

SET BY: CAMPBELL CONSULTANTS INC

