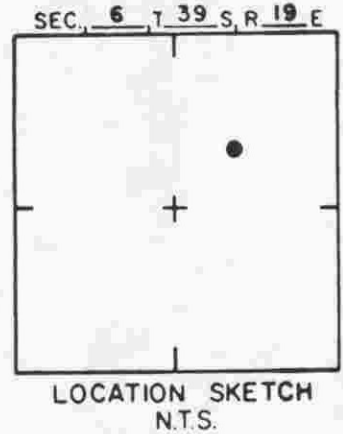
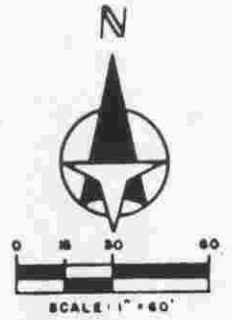
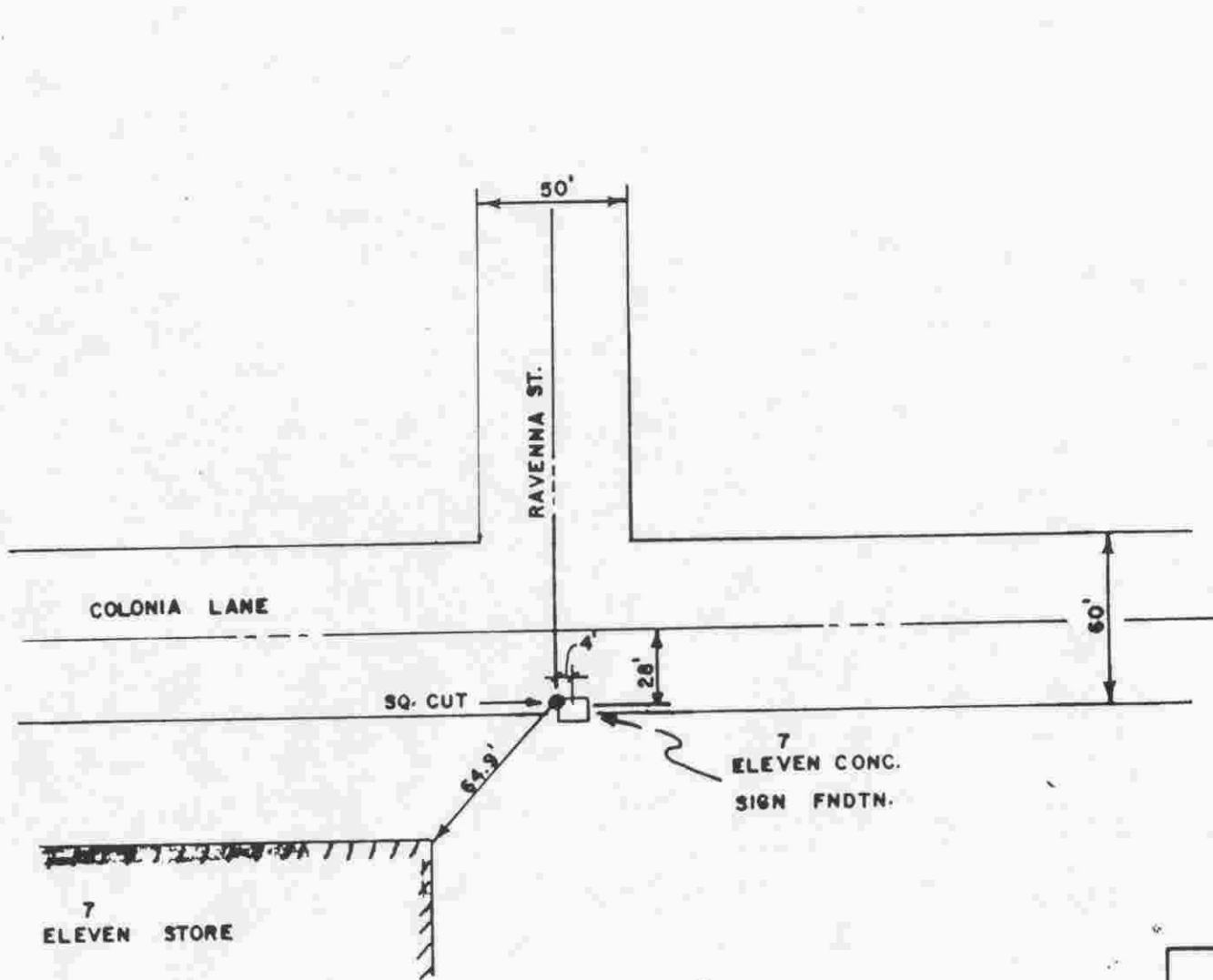


**SARASOTA COUNTY**  
 TRANSPORTATION DEPARTMENT  
 ENGINEERING DIVISION

<b>BENCH MARK DATA SHEET</b>		ELEV.
		11.94
DATE DRAWN: 11-29-84 BY: RJ		BM. NO.
REF: FB. 254 PG. 31-38 DATE: 17-82		405A
ELEV. BASED ON B.M. NO. 405C		

DATE	TYPE	FB. PG.	BY
REVISIONS			



SARASOTA COUNTY  
TRANSPORTATION DEPARTMENT  
ENGINEERING DIVISION

BENCH MARK  
DATA SHEET

ELEV.

14.01'

BM. NO.

405B

DATE DRAWN: 11-30-84 BY: RJ

REF: FB. 254 PG. 38 DATE: 8-27-84

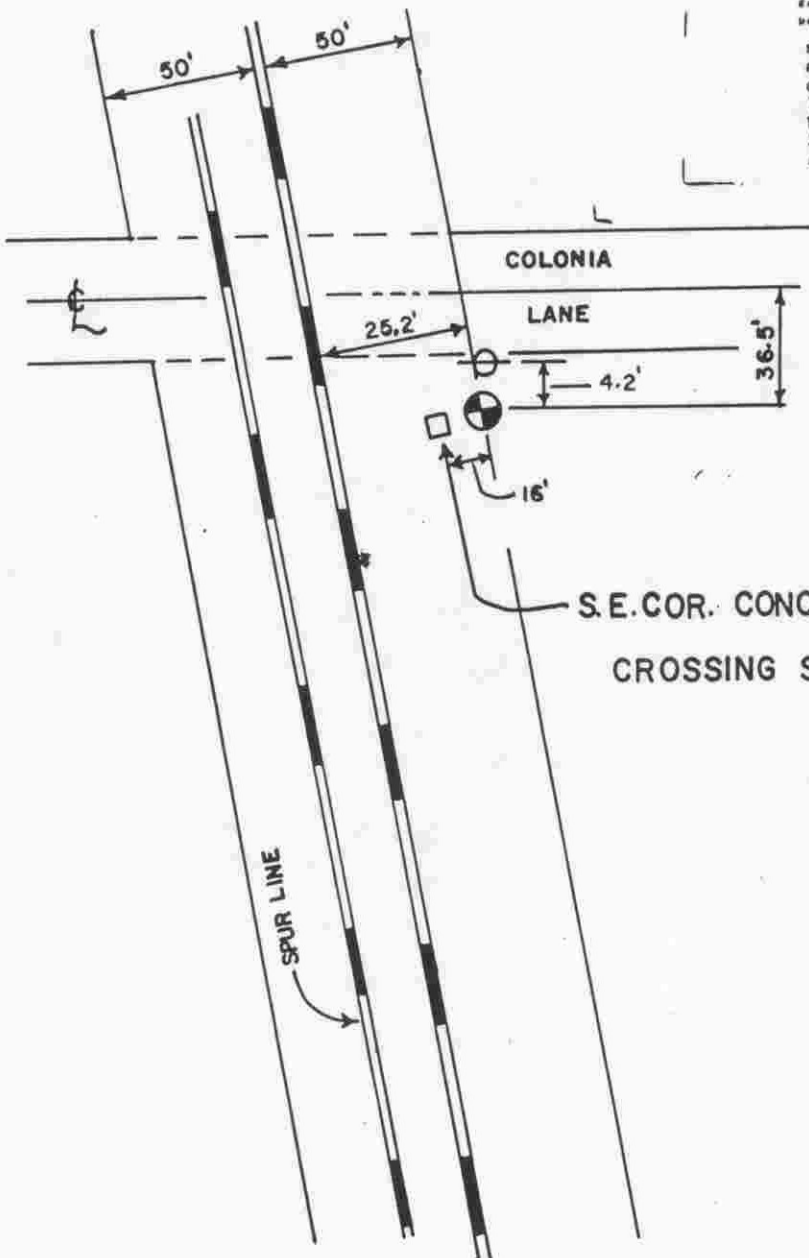
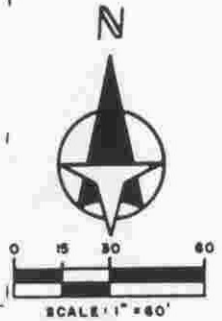
ELEV. BASED ON B.M. NO. P 252

DATE	TYPE	FB. PG.	BY
REVISIONS			

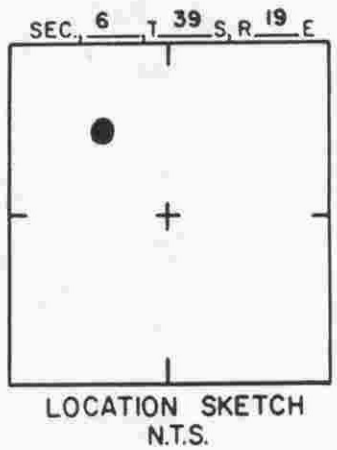
Elv. 10.404'

DESCRIPTION OF BENCH MARK

Destination P 252 State Florida County Sarasota  
 Nearest town Venice County Sarasota Chief of party R. Gerrish  
 Distance and direction from nearest town 1.25 miles north Levelling date 1/66  
 Character of work A C&GS Bench Mark Disk Stampings P 252 1965  
 Established by C&GS  
 Detailed description 1.25 miles north along the Seaboard Air Line Railroad from the station at Venice, near the crossing of Pocono Trail, about 0.35 mile south of milepost 901, 25.5 feet east of the east rail of the main track, 35.0 feet south of the center line of Pocono Trail, 15.8 feet east of the southeast corner of the concrete base for a box for the crossing signal, 3 1/2 feet south of a power pole with a meter, 2.5 feet north of a metal witness post, about level with the track and set in the top of a concrete post projecting 0.1 foot.

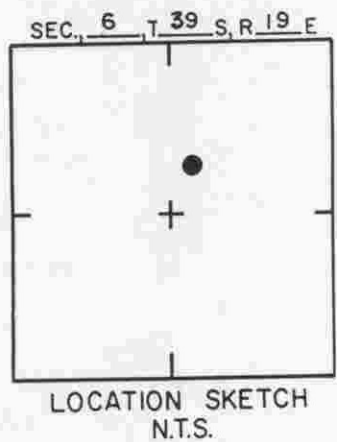
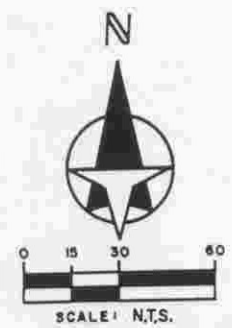
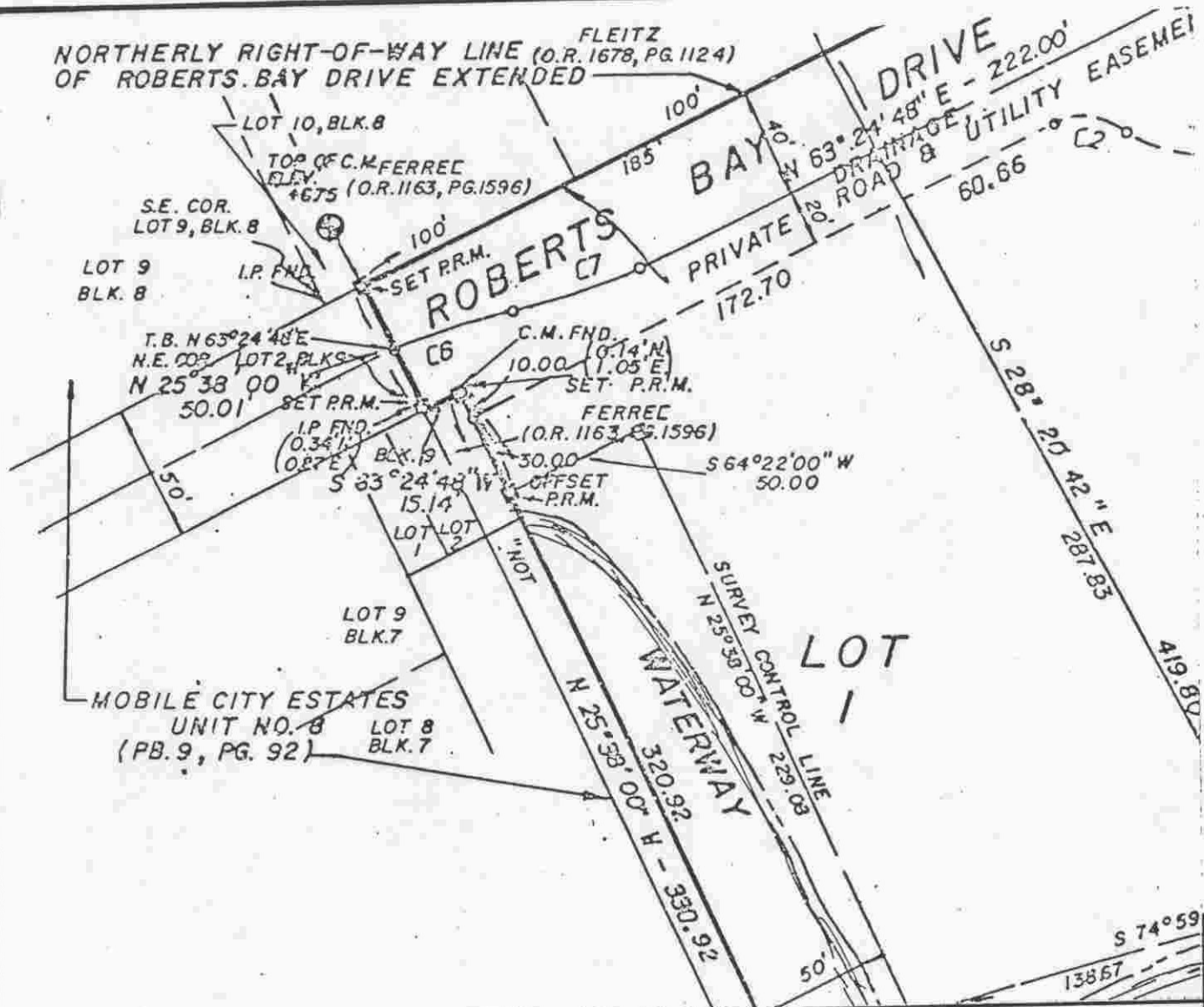


S.E. COR. CONC. BASE FOR  
CROSSING SIGNAL BOX



SARASOTA COUNTY  
TRANSPORTATION DEPARTMENT  
ENGINEERING DIVISION

				BENCH MARK DATA SHEET		ELEV.
				DATE DRAWN: 11-26-84 BY: RJ		10.404'
DATE	TYPE	FB. PG.	BY	REF: FB. 254	PG. 30-38 DATE 9/15/82	BM. NO.
REVISIONS				ELEV. EST. BY USCGS B.M. NO. P-252		405C



SARASOTA COUNTY  
 TRANSPORTATION DEPARTMENT  
 ENGINEERING DIVISION

BENCH MARK  
 DATA SHEET

ELEV.  
 6.75'

DATE DRAWN: 5-13-86

BY: RJJ.

BM. NO.

REF: FB.

PG.

DATE

405D

DATE	TYPE	FB. PG.	BY
REVISIONS			

ELEV. BASED ON B.M. NO. USC&GS P252