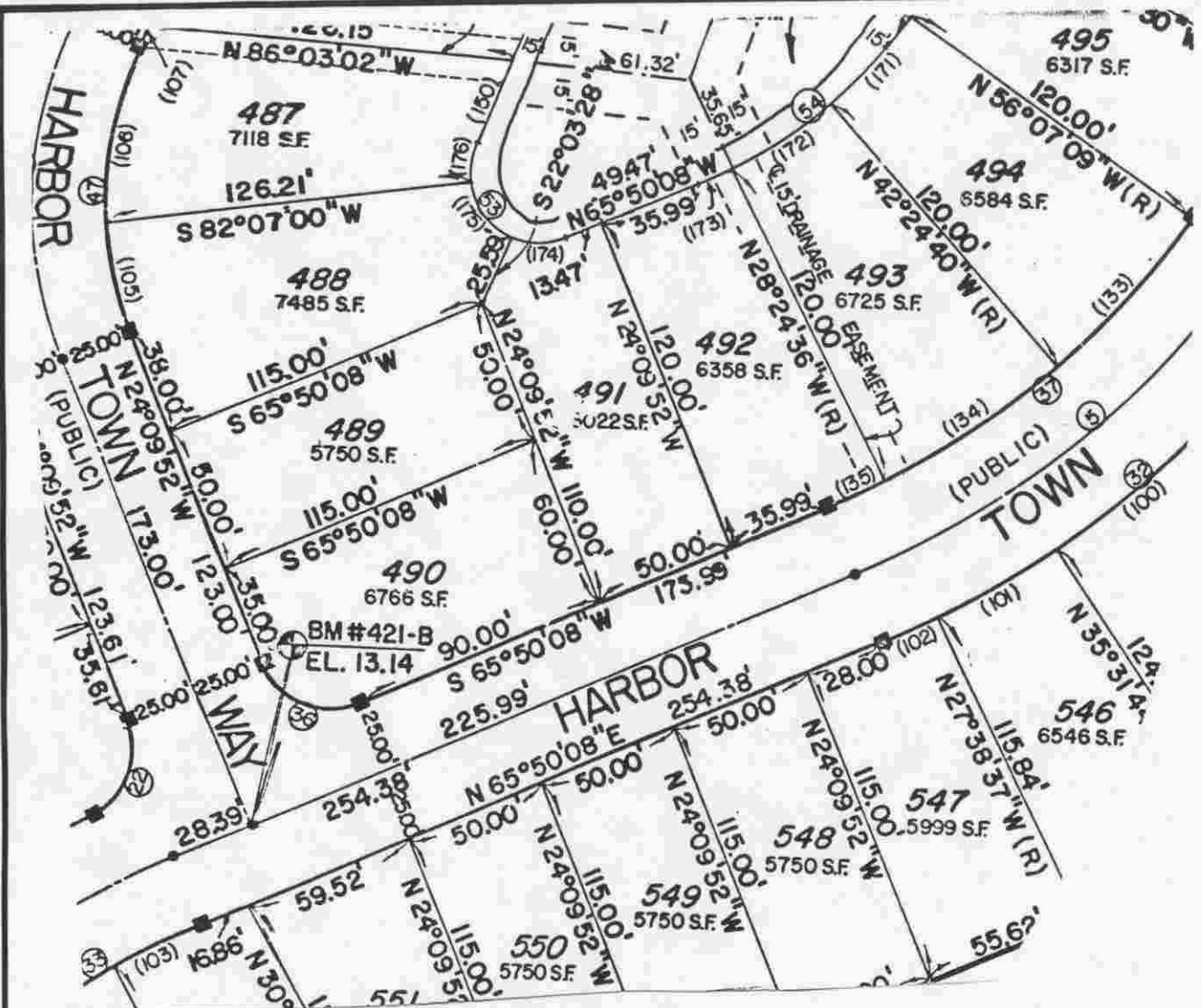
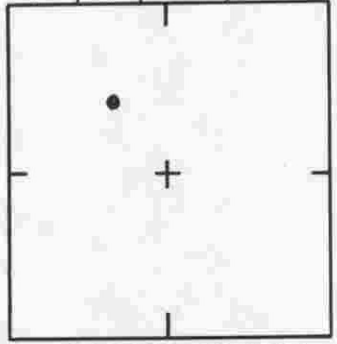


<p><b>SARASOTA COUNTY</b> TRANSPORTATION DEPARTMENT ENGINEERING DIVISION</p>				<p><b>BENCH MARK</b> <b>DATA SHEET</b></p>		ELEV.
						12.30
DATE DRAWN: 9/85		BY: PJB		BM. NO.		
REF: P.B. 30		PG. 32-32D		DATE 8/85		
ELEV. BASED ON B.M. NO. SARCO 437				421		

DATE	TYPE	FB. PG.	BY
REVISIONS			



SEC. 14 T. 39 S. R. 19 E



LOCATION SKETCH  
N.T.S.

THE VILLAS OF CHESTNUT CREEK, UNIT NO. 1  
PB. 30 , PG. 13

<p><b>SARASOTA COUNTY</b> TRANSPORTATION DEPARTMENT ENGINEERING DIVISION</p>		ELEV.
		13.14'
<p>BENCH MARK DATA SHEET</p>		BM. NO.
<p>DATE DRAWN: 7-29-88 BY: RAK</p>		421-B
DATE	TYPE	FB. PG.
<p>REVISIONS</p>		ELEV. BASED ON BM. NO. 437

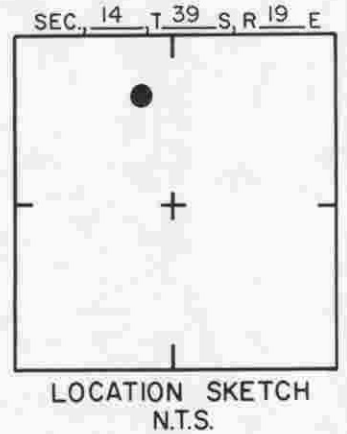
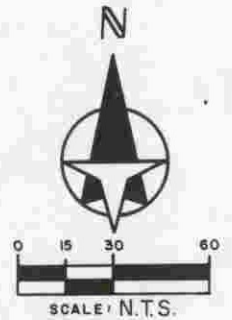
DATE	TYPE	FB. PG.	BY



**CURVE DATA**  
 ①  $\Delta = 12^\circ 57' 10''$   
 $R = 302.95'$   
 $A = 68.49'$   
 $CH = 68.34'$   
 $T = 34.39'$   
 $CHB = N 06^\circ 06' 01'' E$

②  $\Delta = 12^\circ 55' 36''$   
 $R = 775.00'$   
 $A = 174.85'$   
 $CH = 174.48'$   
 $T = 87.80'$   
 $CHB = N 06^\circ 50' 22'' W$

BM 421 C  
 EL. 12.96'



THE PATIO HOMES OF CHESTNUT CREEK,  
 UNIT NO. II PB. 34/4-4C

**SARASOTA COUNTY**  
 TRANSPORTATION DEPARTMENT  
 ENGINEERING DIVISION

**BENCH MARK DATA SHEET**

		ELEV.
		12.96'
		BM. NO.
		421 C
DATE DRAWN: MAR. 26, 1990 BY: KLP		
SET BY: MOSBY ENGINEERING ASSOC.		
ELEV. BASED ON B.M. NO. SARCO 437		

DATE	TYPE	F.B. PG.	BY
REVISIONS			