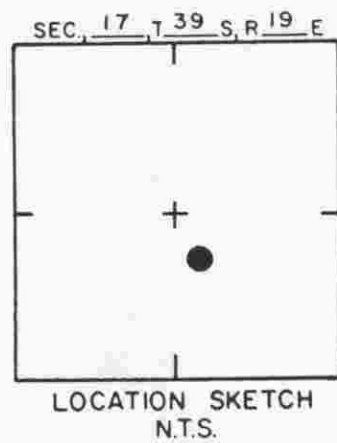
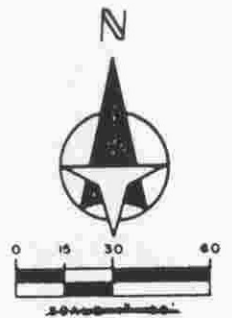


**SARASOTA COUNTY**  
 TRANSPORTATION DEPARTMENT  
 ENGINEERING DIVISION

**BENCH MARK  
 DATA SHEET**

DATE DRAWN: 6-6-85		BY: WFW		ELEV.
REF: FB. 259		PG. 27		16.34'
DATE 10-17-84		ELEV. EST. C.of E. No. IWSA - 25		BM. NO.
				428

DATE	TYPE	FB. PG.	BY
REVISIONS			

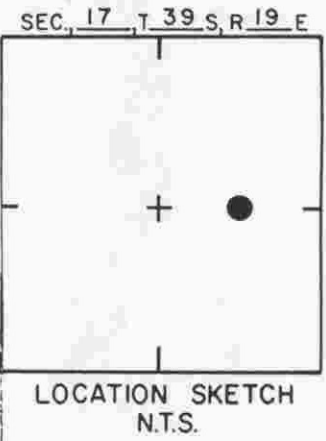
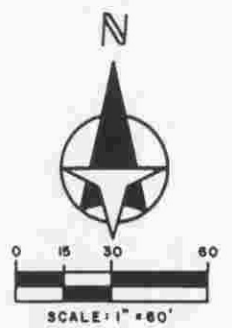
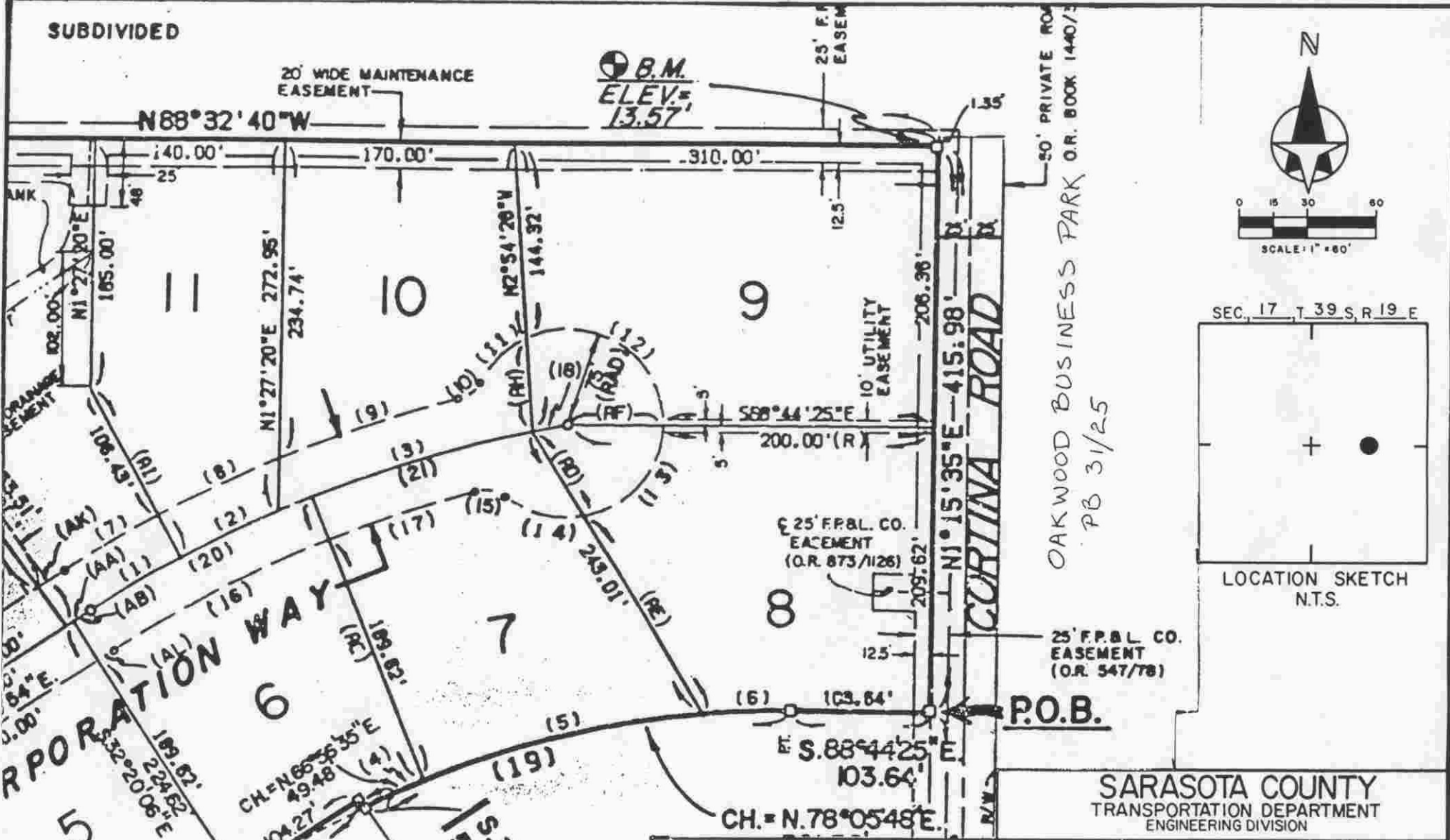


SARASOTA COUNTY TRANSPORTATION DEPARTMENT ENGINEERING DIVISION			
BENCH MARK DATA SHEET			ELEV. 15.66'
DATE DRAWN: 10-8-86		BY: RJJ	
REF: FB.		PG. DATE	
			428 A
ELEV. BASED ON B.M. NO. USC&GS D-252			

DATE	TYPE	FB. PG.	BY
REVISIONS			

SR 45A1 BUSIN  
 159

NOT  
 SUBDIVIDED  
 OAKWOOD BUSINESS  
 PARK  
 PB 31/25



SARASOTA COUNTY  
 TRANSPORTATION DEPARTMENT  
 ENGINEERING DIVISION

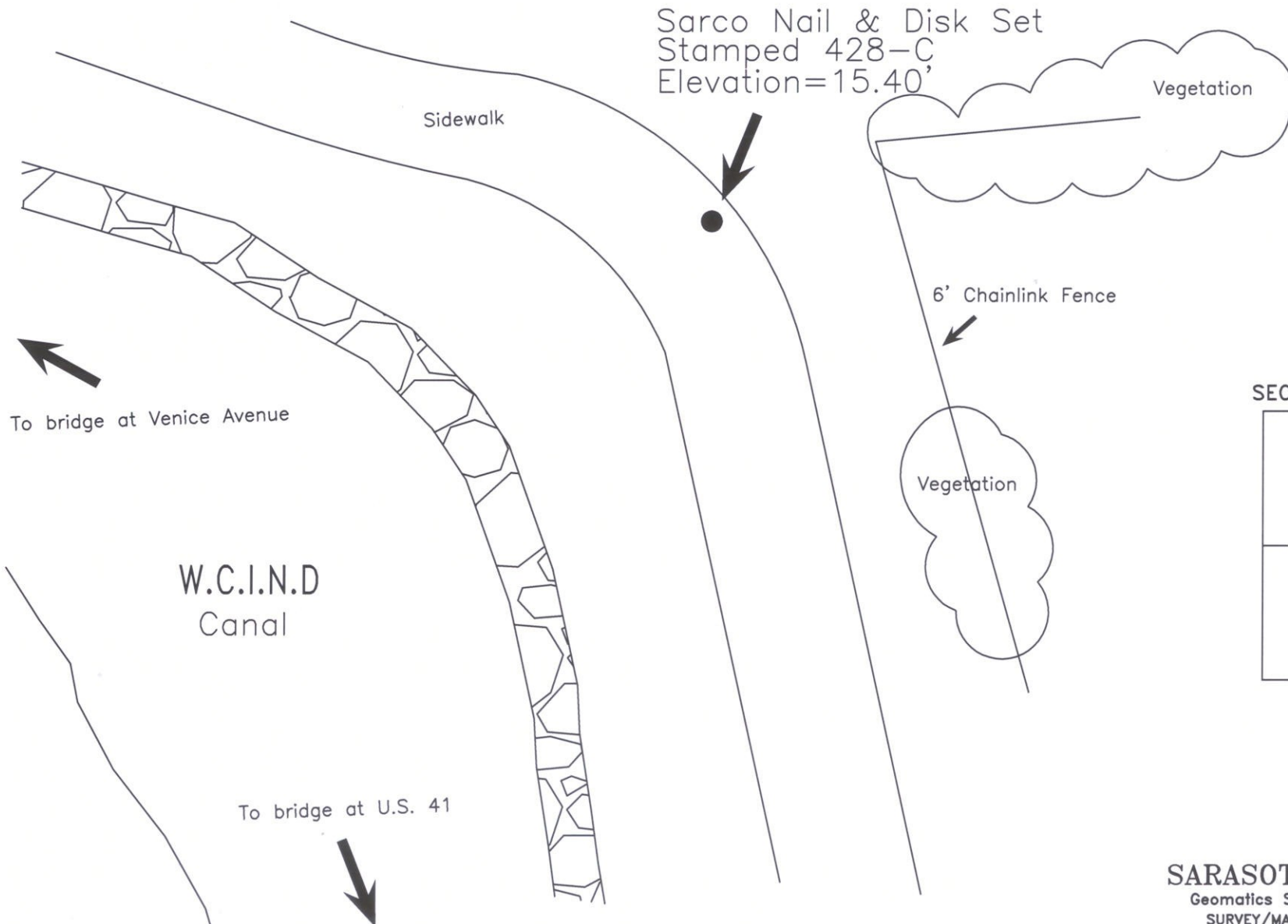
**BENCH MARK DATA SHEET**

DATE DRAWN: 10-8-86		BY: RJJ		ELEV.
REF: F.B.		PG.		13.57'
DATE		DATE		BM. NO.
				4288

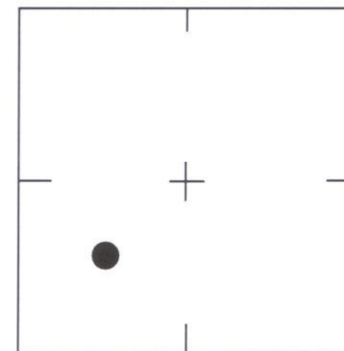
DATE	TYPE	F.B. PG.	BY

DEVISIONS

ELEV. BASED ON B.M. NO. 4288



SEC., 17 , T 39 S, R 19 E



LOCATION SKETCH  
N.T.S.

**SARASOTA COUNTY**  
Geomatics Service Center  
SURVEY/MAPPING SECTION

WGS 84	Lat: N27° 05' 04.8"	REVISIONS / REMARKS	BENCH MARK DATA SHEET	ELEV.
	Lon: W82° 25' 47.5"			15.40'
FL W. 83	N. 1000187.419'	SET BY: SARCO	DATE DRAWN: 3/8/2007 BY: SJ	NGVD 29'
	E. 516299.672'		REF.: DL 2 PG. 66-81 DATE: 3/2/07	B.M. NO.
			ELEV. BASED ON B.M. NO. 433	428-C