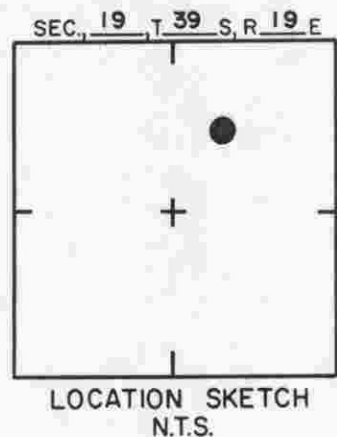
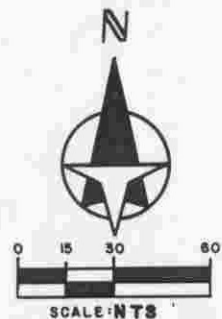
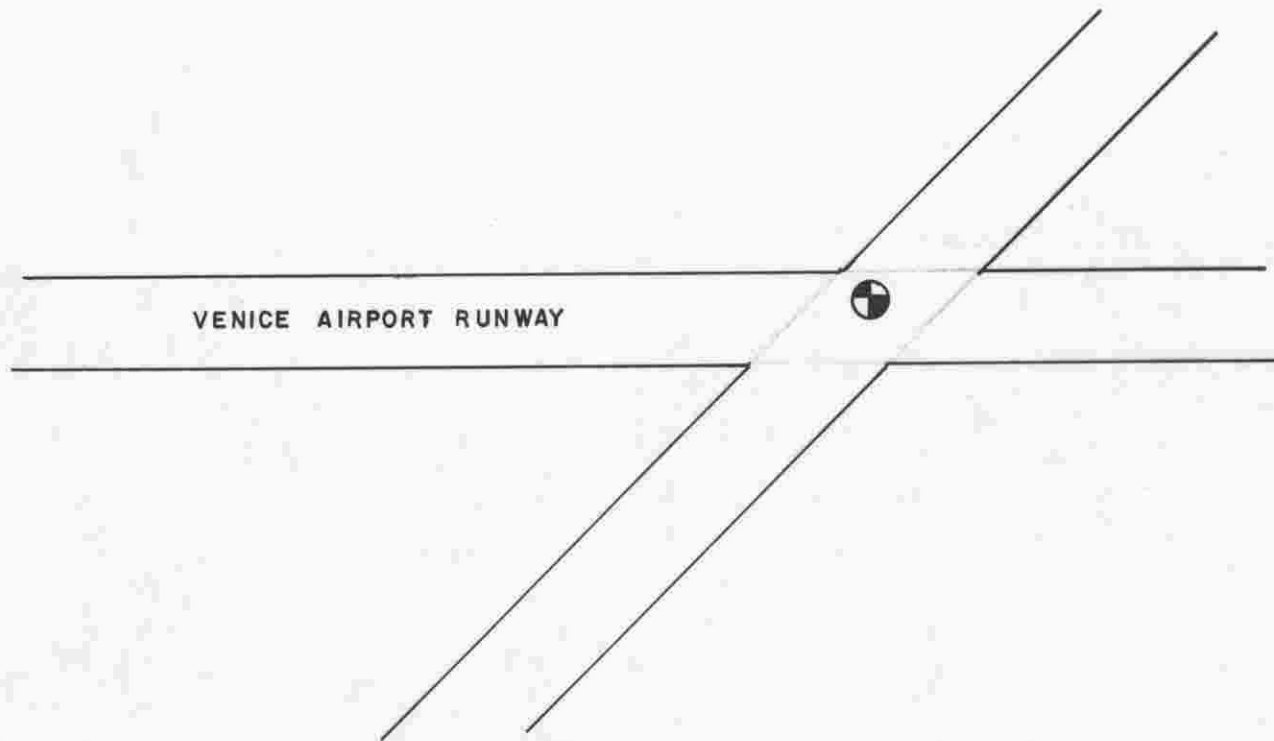


SARCO B.M. 431A
Metal Disc in Concrete
Elev. 17.152'

SARASOTA COUNTY
TRANSPORTATION DEPARTMENT
ENGINEERING DIVISION

**BENCH MARK
DATA SHEET**

USC&GS 2-118				ELEV	
				17.152	
DATE DRAWN 9/85		BY PJB		BM. NO.	
DATE	TYPE	FB PG	BY	REF FB 227 PG 75	DATE 9-19-79
REVISIONS				ELEV BASED ON BM U.S.C. & G.	
				431A	

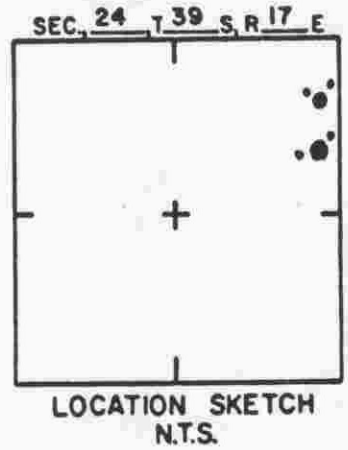
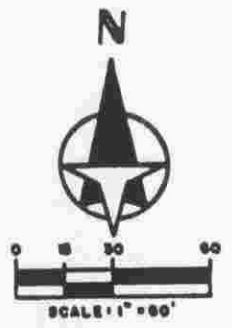
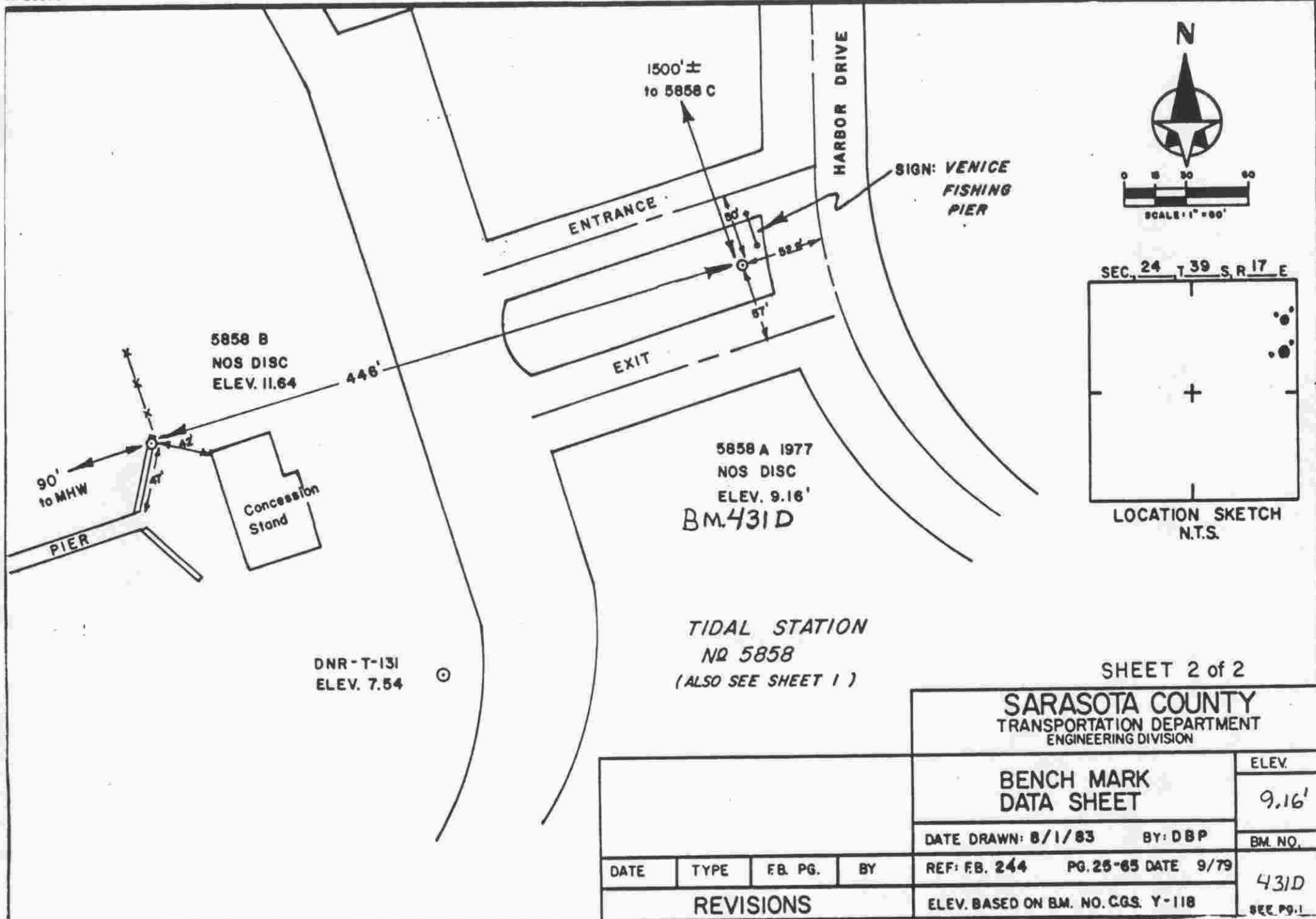


Elev. 18.7' DESCRIPTION OF SUPPLEMENTARY ELEVATION POINT

Extra Perseph No.	High Point	State	Florida	County	Sarasota
Distance and direction from bench mark	At Venice Airport	Chief of Party	R. Gerrish	Date	1/66
Detailed description: High point of the Venice Airport is at the center of the intersection of east-west runway and northeast-southwest runway.					

SARASOTA COUNTY
TRANSPORTATION DEPARTMENT
ENGINEERING DIVISION

				BENCH MARK DATA SHEET		ELEV.
						18.7'
				DATE DRAWN: 3-23-87	BY: RJJ	BM. NO.
				REF: NOS "HIGH POINT"	DATE 1/66	431C
REVISIONS				ELEV. BASED ON B.M. NO.		



SHEET 2 of 2

SARASOTA COUNTY
TRANSPORTATION DEPARTMENT
ENGINEERING DIVISION

BENCH MARK
DATA SHEET

ELEV.
9.16'

DATE DRAWN: 8/1/83 BY: DBP

BM. NO.

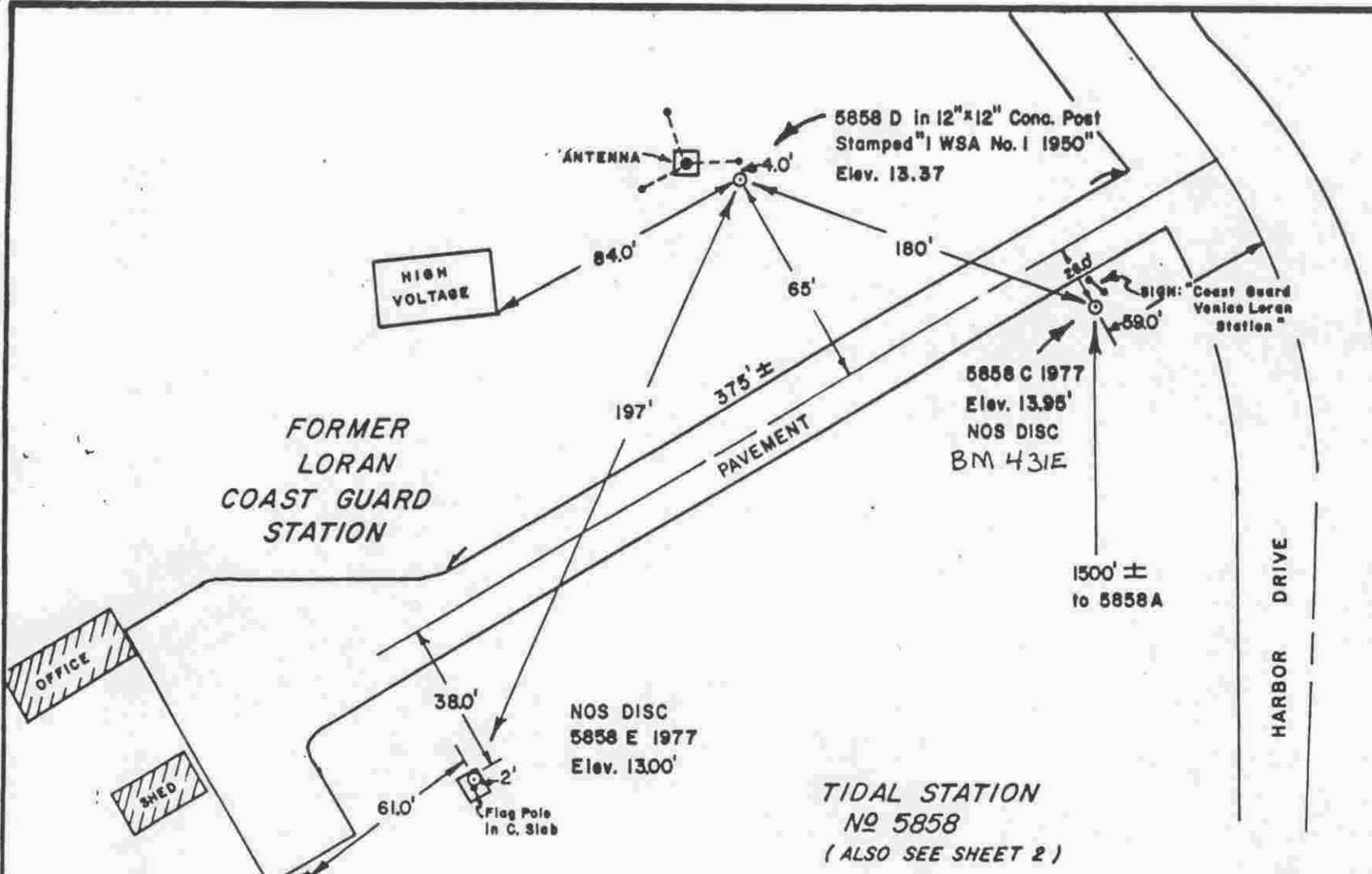
REF: FB. 244 PG. 25-65 DATE 9/79

431D

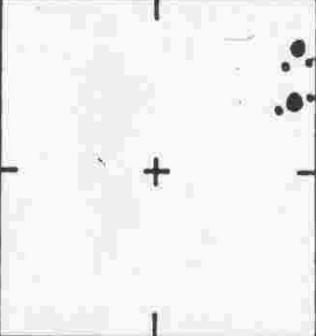
ELEV. BASED ON BM. NO. CGS. Y-118

SEE PG. 1

DATE	TYPE	FB. PG.	BY
REVISIONS			



SEC. 24 T. 39 S. R. 17 E



LOCATION SKETCH N.T.S.

SHEET 1 of 2

SARASOTA COUNTY
TRANSPORTATION DEPARTMENT
ENGINEERING DIVISION

BENCH MARK DATA SHEET

ELEV.

13.95'

BM. NO.

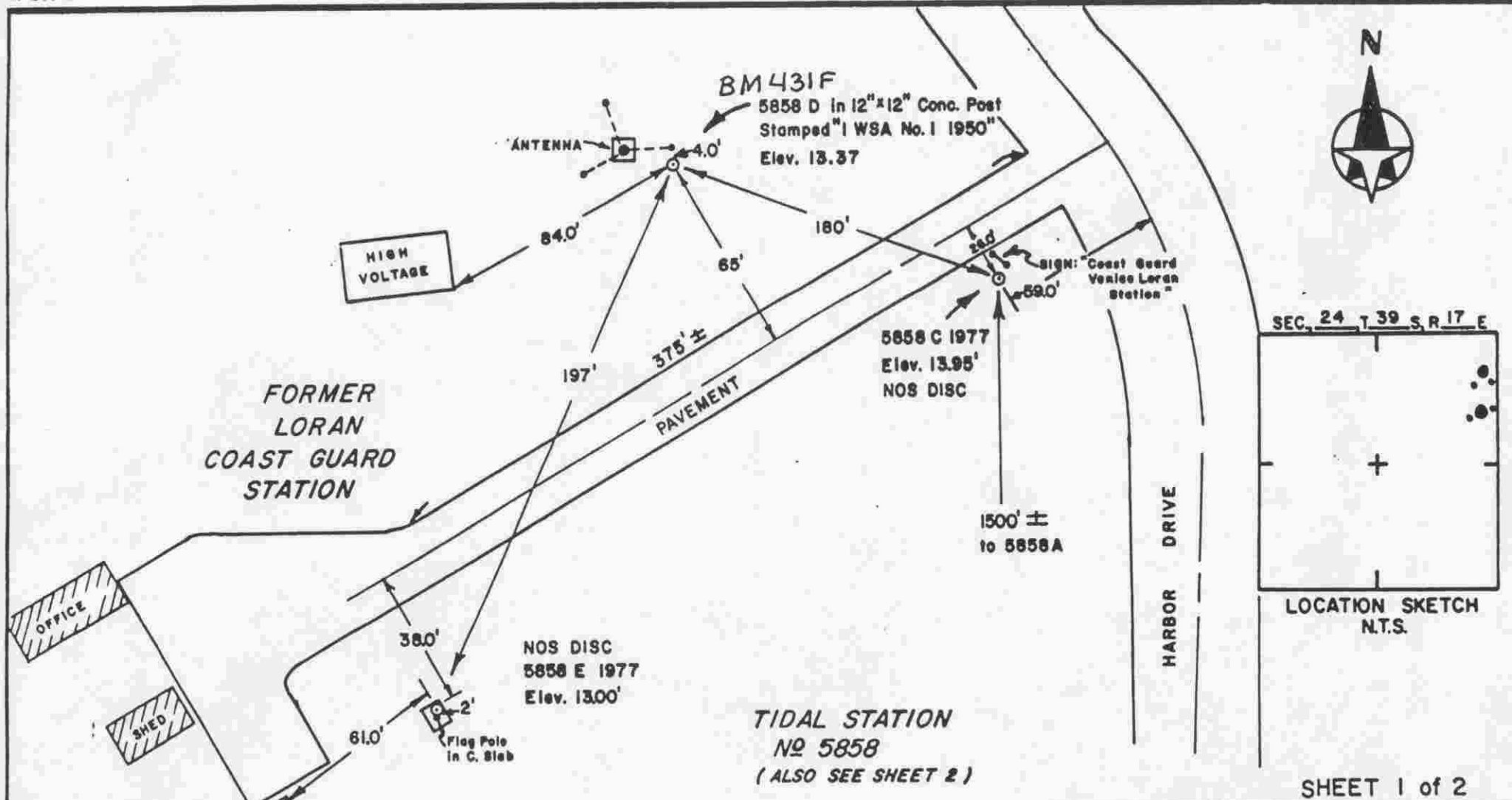
431E

DATE DRAWN: 8/1/83 BY: DBP

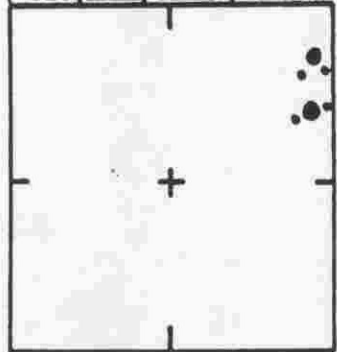
REF: FB. 244 PG. 25-65 DATE 9/79

ELEV. BASED ON BM. NO. C.G.S. Y-118

DATE	TYPE	FB. PG.	BY
REVISIONS			



SEC. 24 T. 39 S. R. 17 E



LOCATION SKETCH
N.T.S.

SHEET 1 of 2

SARASOTA COUNTY
TRANSPORTATION DEPARTMENT
ENGINEERING DIVISION

				BENCH MARK DATA SHEET		ELEV.
						13.37'
				DATE DRAWN: 8/1/83 BY: DBP		BM. NO.
DATE	TYPE	FB. PG.	BY	REF: FB. 244 PG. 25-65 DATE 9/79		431F
REVISIONS				ELEV. BASED ON BM. NO. C.G.S. Y-118		