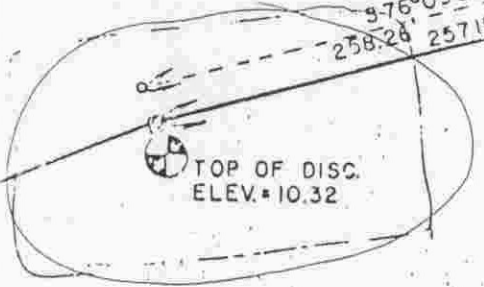
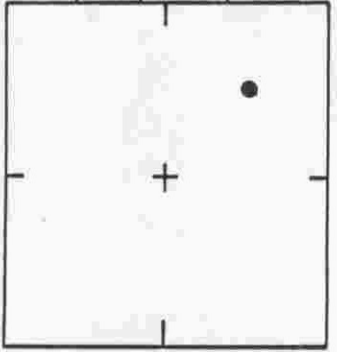


SEC. 23 T. 39 S. R. 19 E

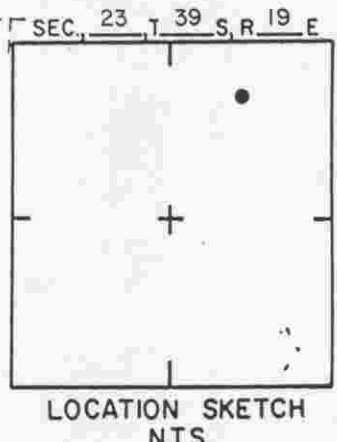
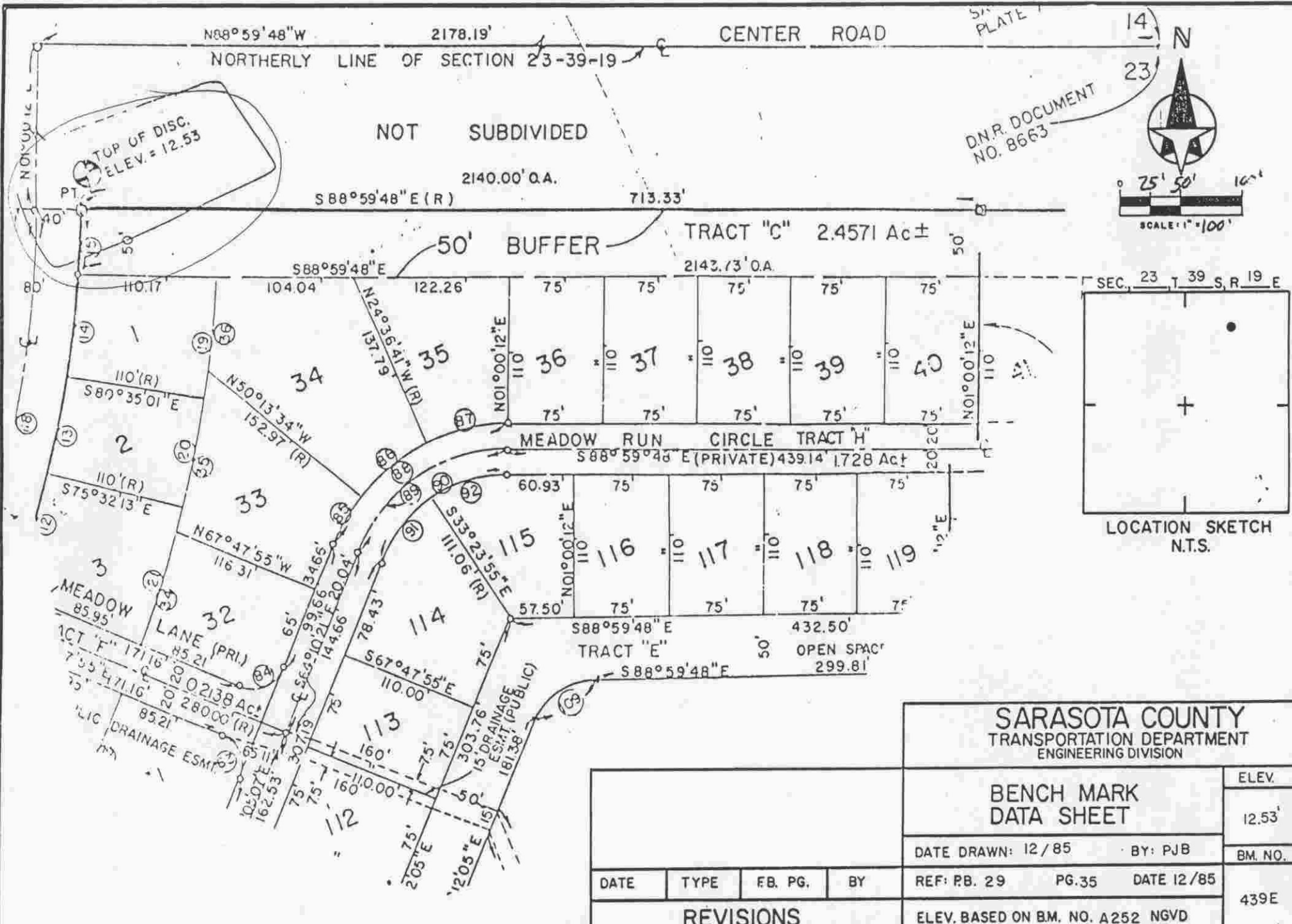


SARASOTA COUNTY
TRANSPORTATION DEPARTMENT
ENGINEERING DIVISION

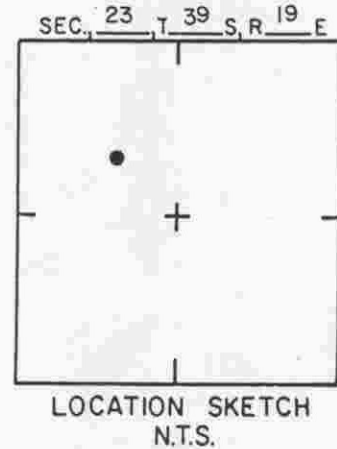
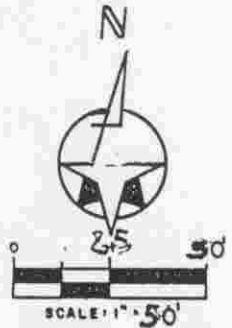
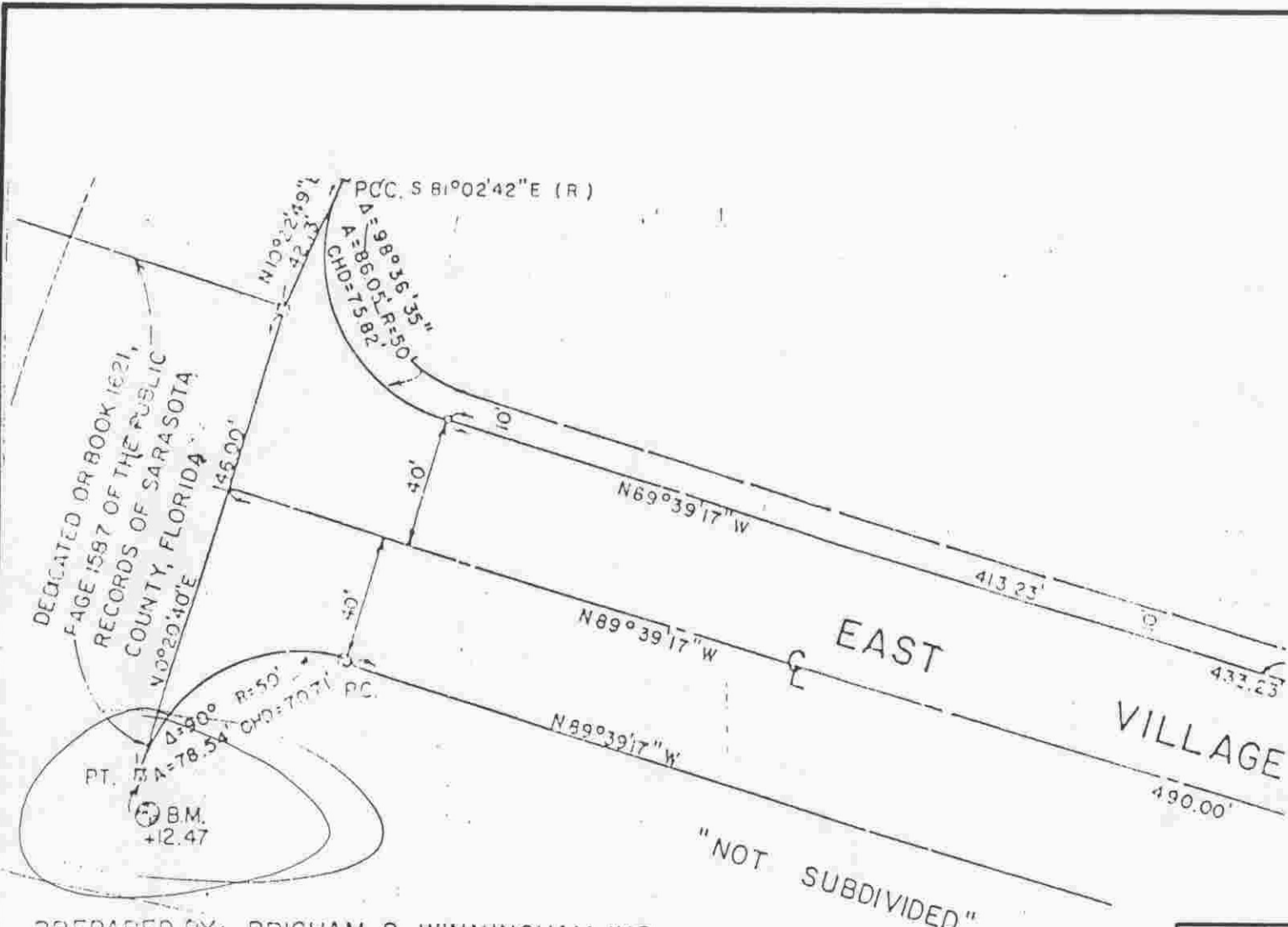
BENCH MARK DATA SHEET

		ELEV.	
		10.32'	
DATE DRAWN: 12/85		BY: PJB	
REF: PB. 29		PG. 35	
DATE 12/85		BM. NO.	
		439C	
ELEV. BASED ON B.M. NO. A 252 NGVD			

DATE	TYPE	FB. PG.	BY
REVISIONS			



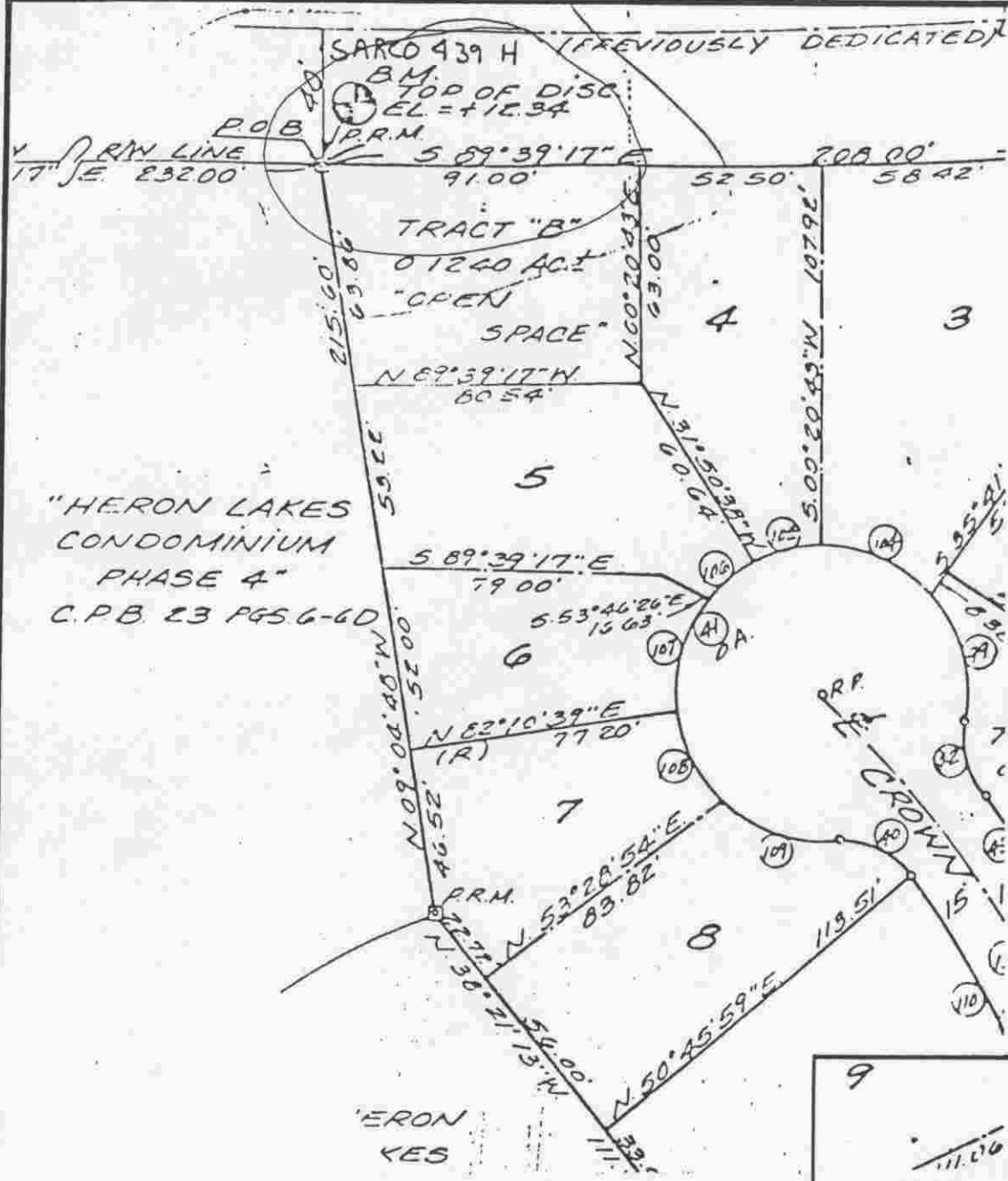
SARASOTA COUNTY TRANSPORTATION DEPARTMENT ENGINEERING DIVISION				ELEV.
				12.53'
BENCH MARK DATA SHEET				BM. NO.
DATE DRAWN: 12/85		BY: PJB		439E
DATE	TYPE	FB. PG.	BY	
REVISIONS				ELEV. BASED ON BM. NO. A252 NGVD

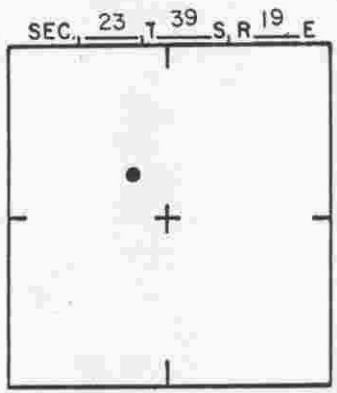
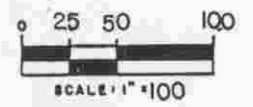
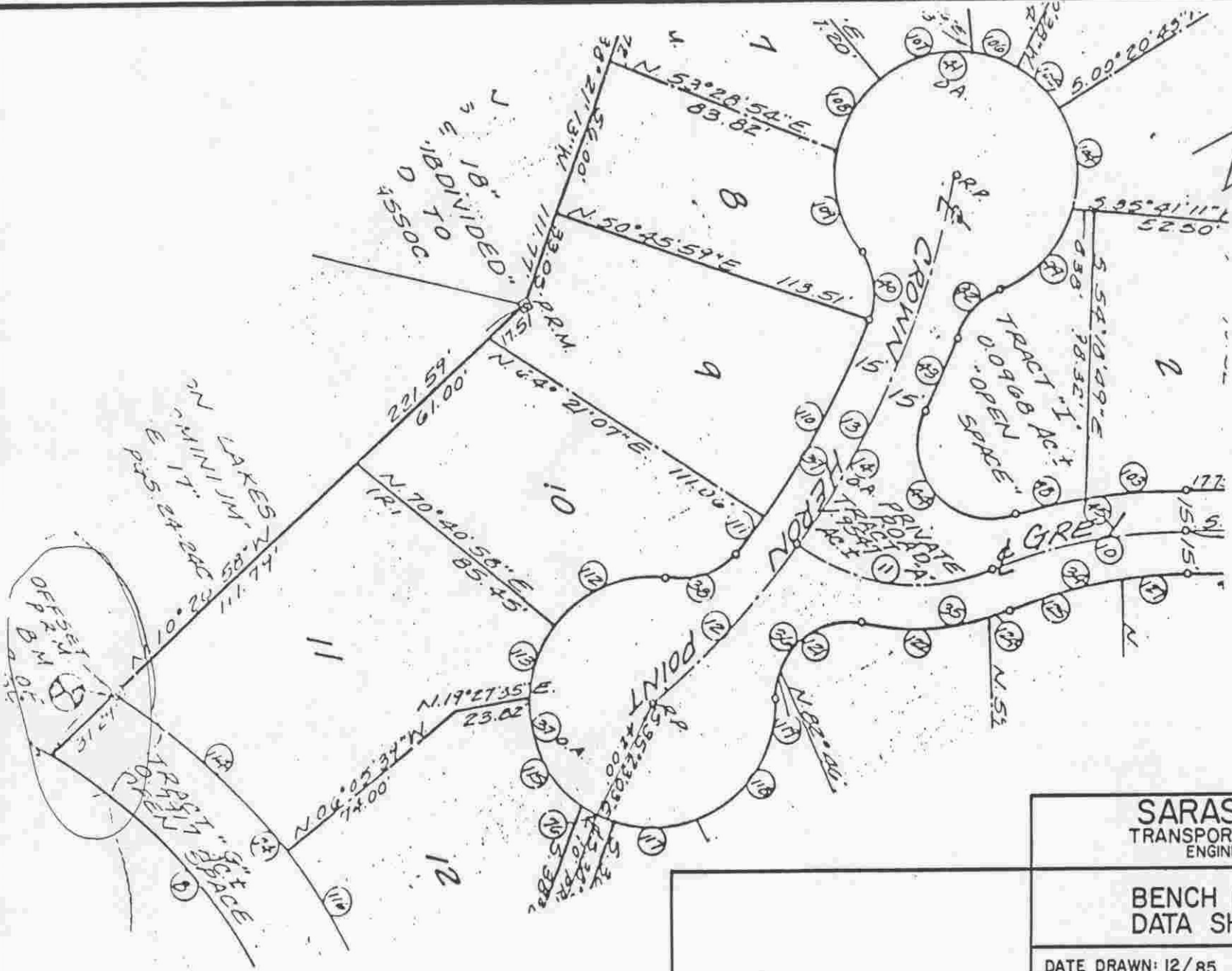


PREPARED BY: BRIGHAM & WINNINGHAM, INC.
712 SHAMROCK BLVD.
VENICE, FLA.

SARASOTA COUNTY
TRANSPORTATION DEPARTMENT
ENGINEERING DIVISION

				BENCH MARK DATA SHEET		ELEV.
						12.47'
REVISIONS				DATE DRAWN: 12/85	BY: PJB	BM. NO.
				REF: PB. 29	PG. 26	DATE 12/85
				ELEV. BASED ON B.M. NO. A-252 NGVD		





LOCATION SKETCH
N.T.S.

SARASOTA COUNTY
TRANSPORTATION DEPARTMENT
ENGINEERING DIVISION

**BENCH MARK
DATA SHEET**

ELEV.

12.34'

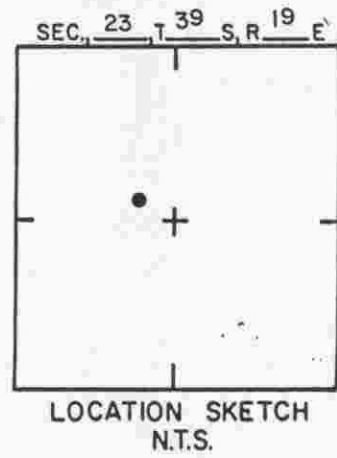
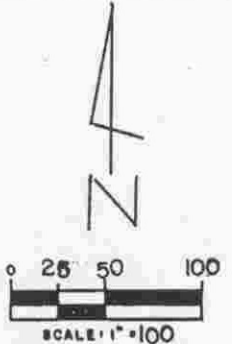
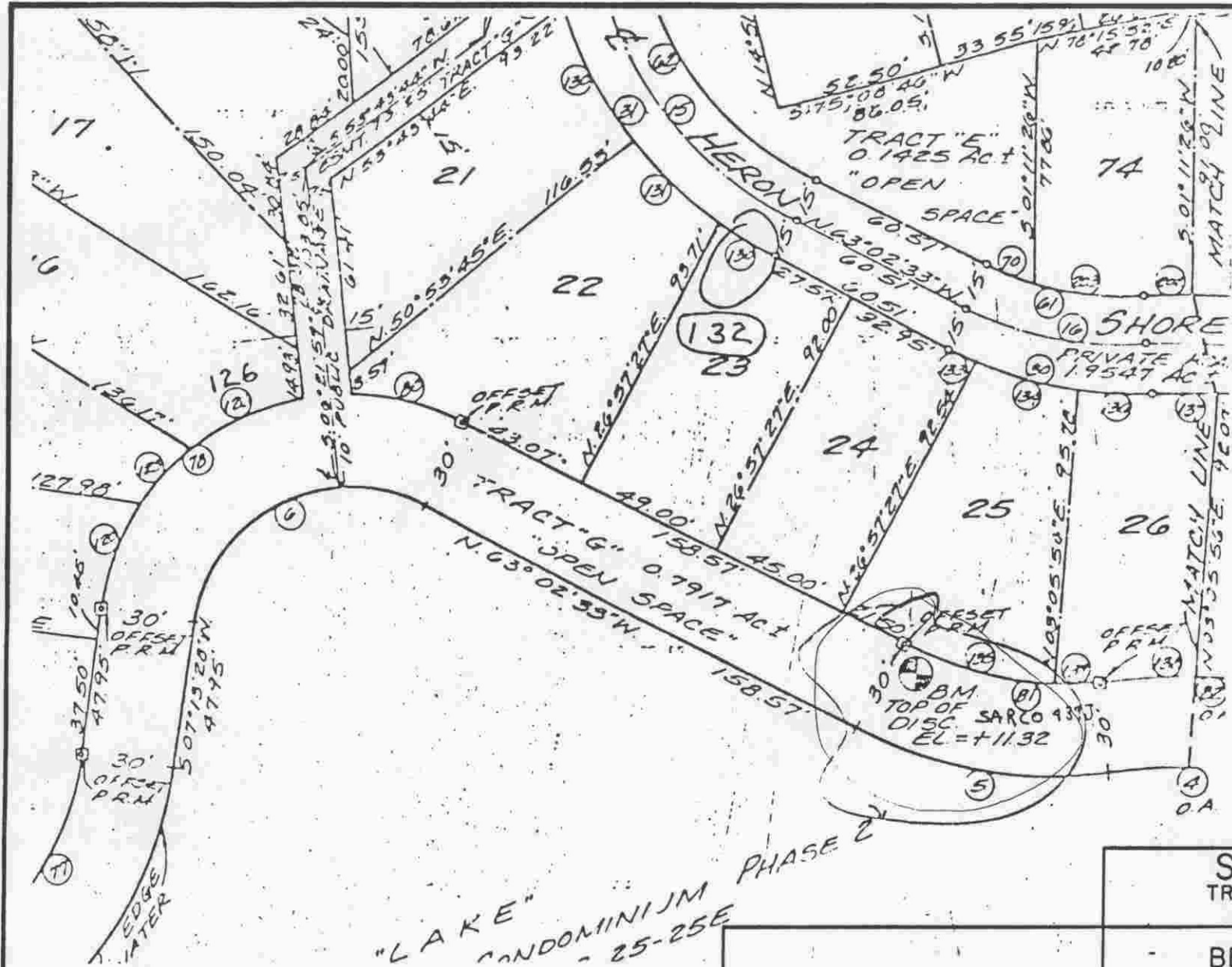
BM. NO.

439I

DATE DRAWN: 12/85 BY: PJB
REF: PB. 30 PG. 21 DATE 12/85

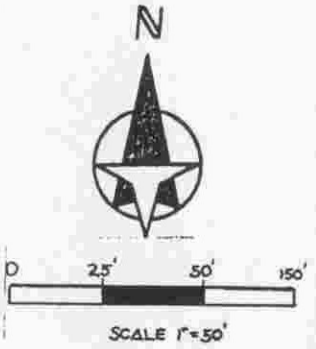
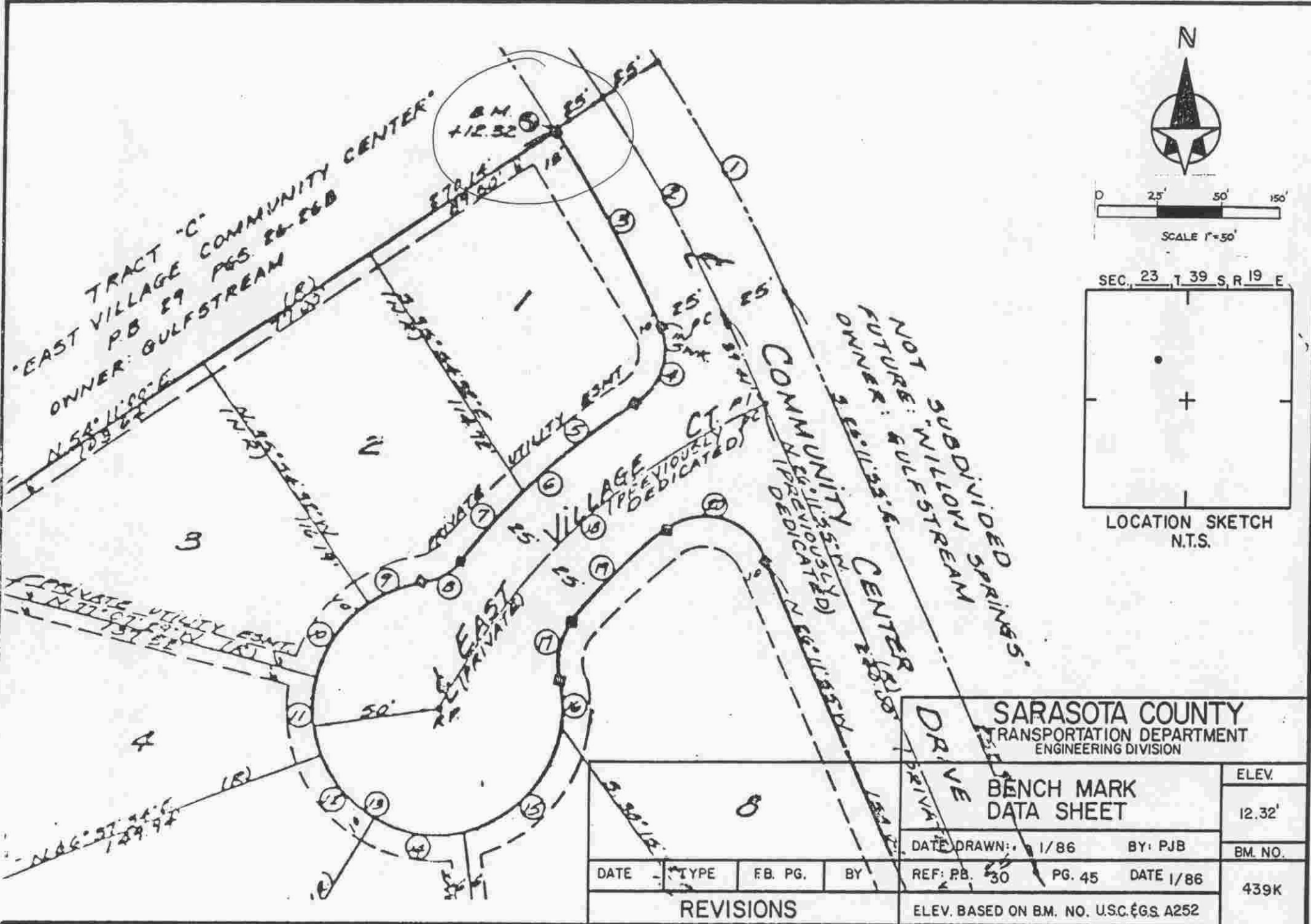
ELEV. BASED ON B.M. NO. B-93 NGVD

DATE	TYPE	FB. PG.	BY
REVISIONS			

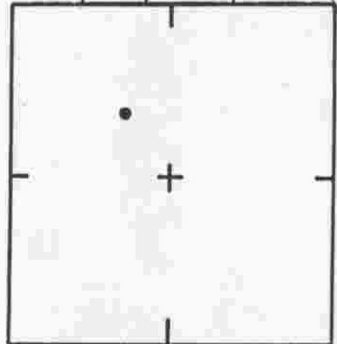


SARASOTA COUNTY TRANSPORTATION DEPARTMENT ENGINEERING DIVISION			
BENCH MARK DATA SHEET			ELEV. 11.32'
DATE DRAWN: 12/85		BY: PJB	
REF: PB. 30	PG. 21	DATE 12/85	
ELEV. BASED ON B.M. NO. B-93 NGVD			439 J

DATE	TYPE	FB. PG.	BY
REVISIONS			



SEC. 23 T. 39 S. R. 19 E.



LOCATION SKETCH
N.T.S.

SARASOTA COUNTY
TRANSPORTATION DEPARTMENT
ENGINEERING DIVISION

**BENCH MARK
DATA SHEET**

ELEV.

12.32'

BM. NO.

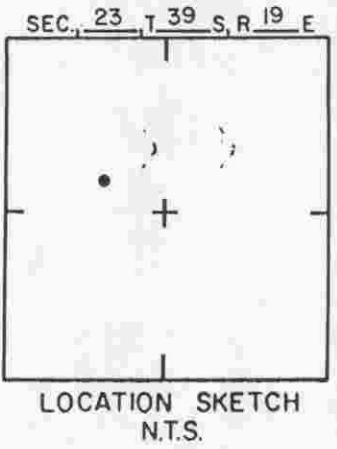
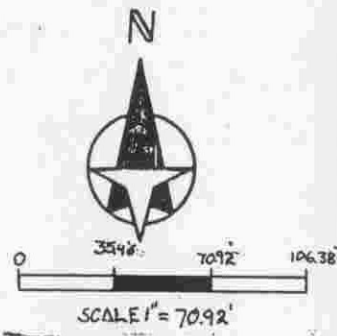
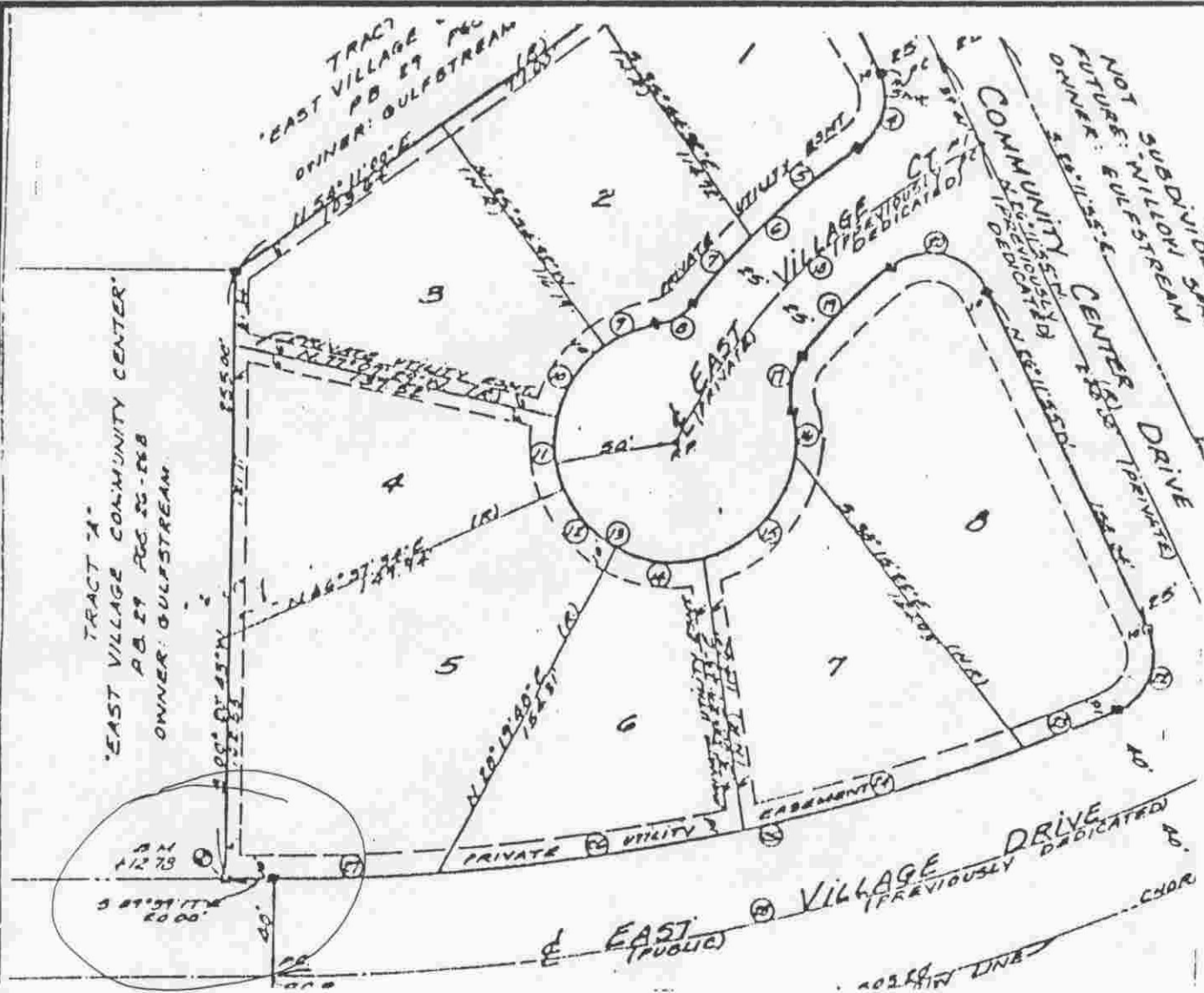
439K

DATE DRAWN: 1/86 BY: PJB
REF. PB. 30 PG. 45 DATE 1/86

ELEV. BASED ON B.M. NO. U.S.C. & G.S. A252

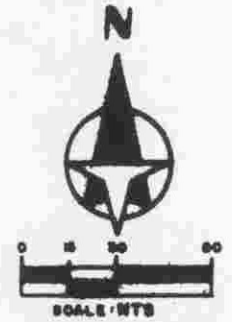
DATE	TYPE	FB. PG.	BY

REVISIONS

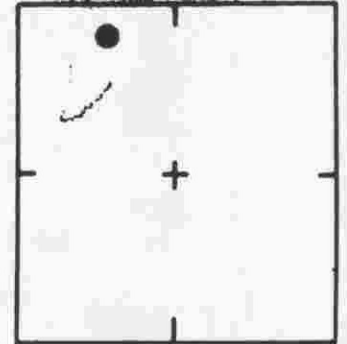


SARASOTA COUNTY		BENCH MARK DATA SHEET	ELEV.
TRANSPORTATION DEPARTMENT ENGINEERING DIVISION			12.78'
DATE DRAWN: 1/86		BY: PJB	BM. NO.
REF: PB. 30	PG. 45	DATE 1/86	439L
ELEV. BASED ON BM. NO. USC & G.S. A252			

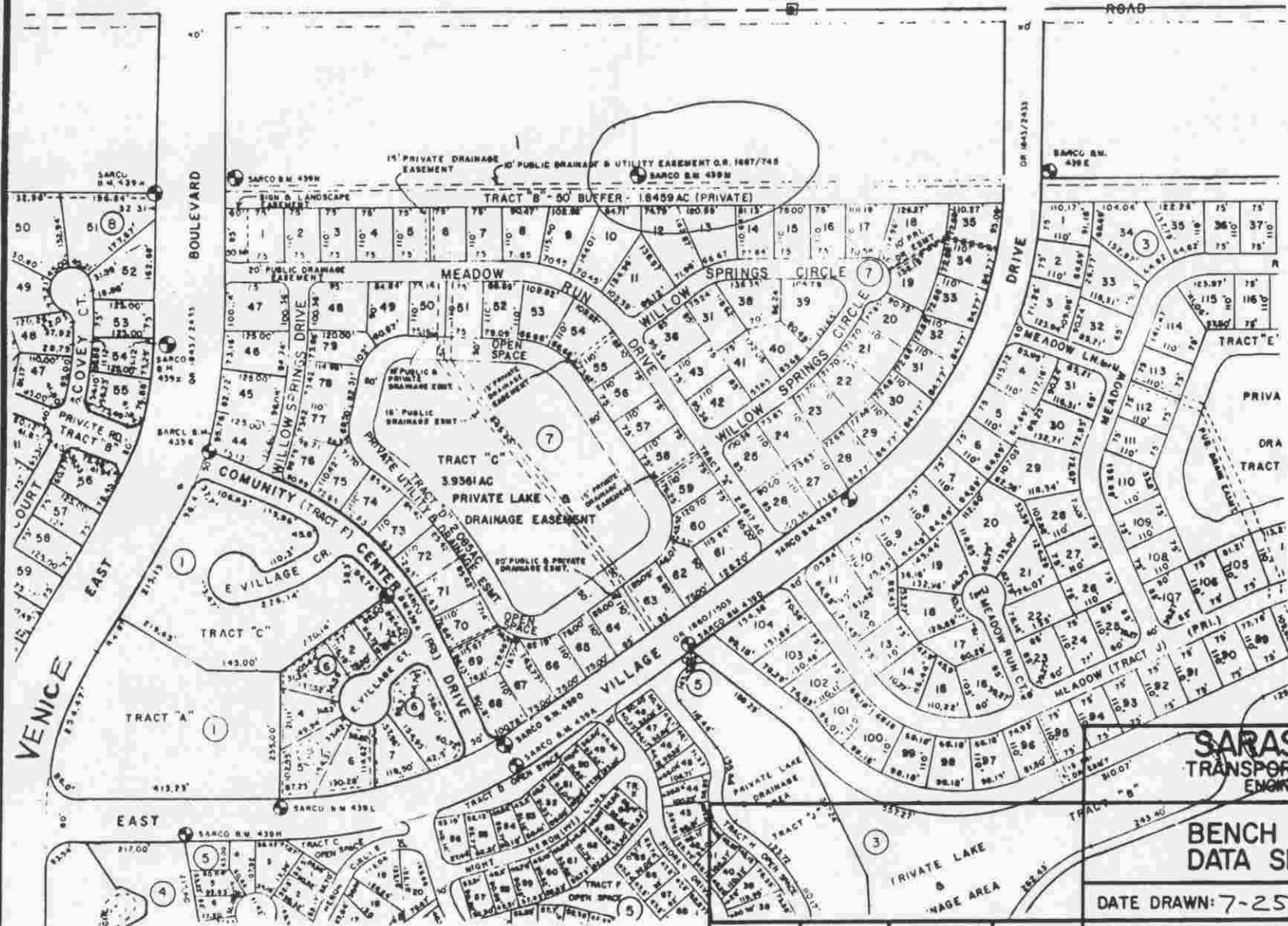
DATE	TYPE	FB. PG.	BY
REVISIONS			



SEC. 23 T. 39 S. R. 19 E



LOCATION SKETCH
N.T.S.

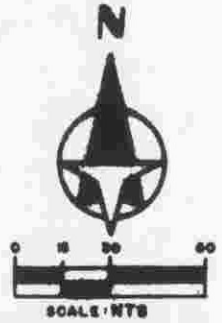


**SARASOTA COUNTY
TRANSPORTATION DEPARTMENT
ENGINEERING DIVISION**

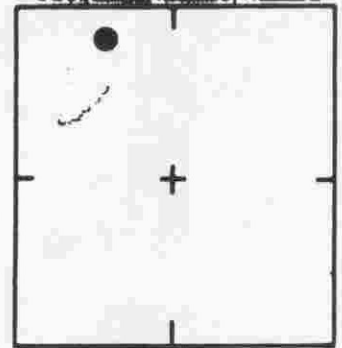
**BENCH MARK
DATA SHEET**

DATE DRAWN: 7-25-88 BY: RJJ		ELEV.
REF: F.B. PG. DATE		13.08'
ELEV. BASED ON B.M. NO.		BM. NO.
		439M

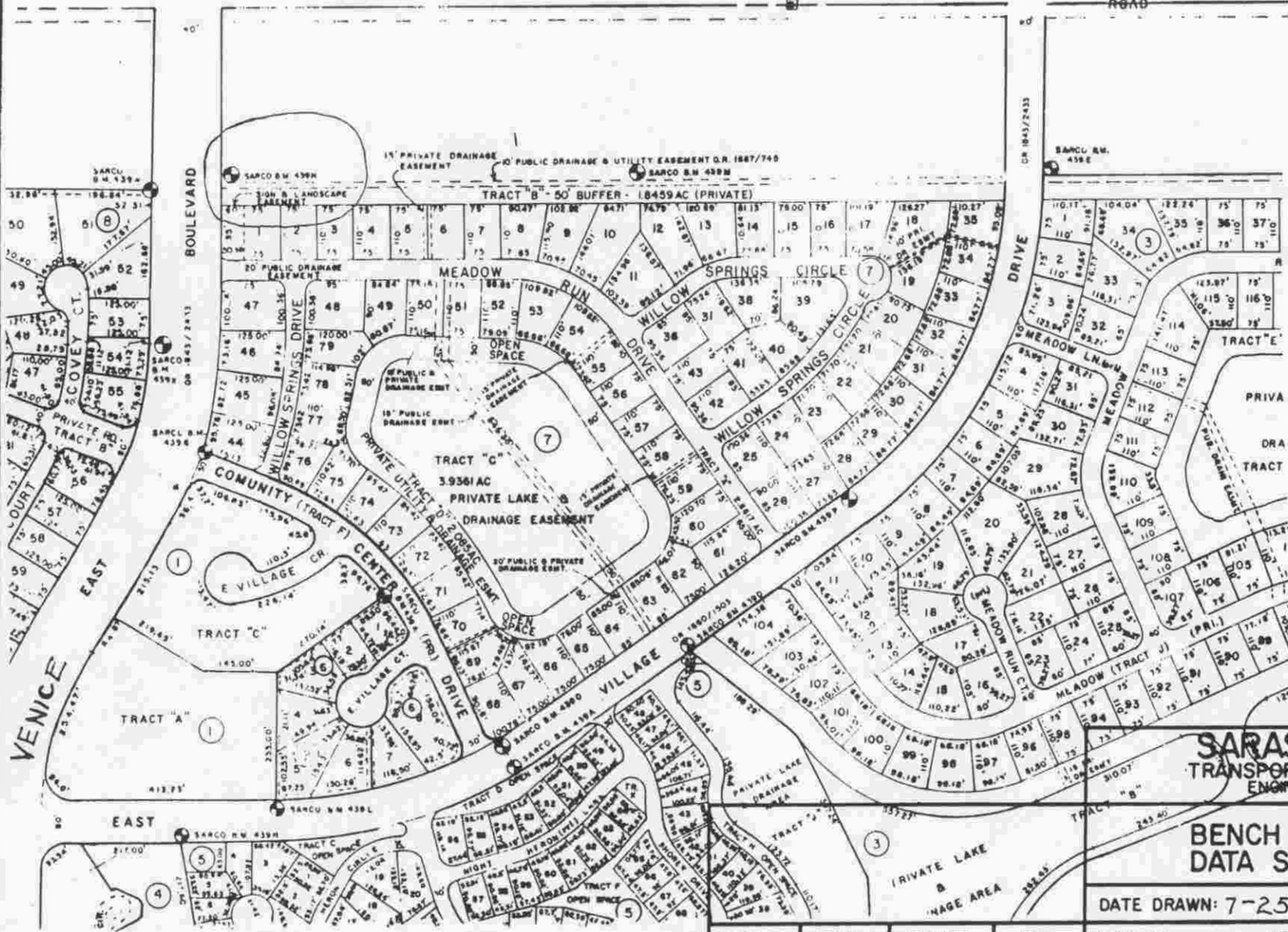
DATE	TYPE	F.B. PG.	BY
REVISIONS			



SEC. 23 T. 39 S. R. 19 E



LOCATION SKETCH
N.T.S.

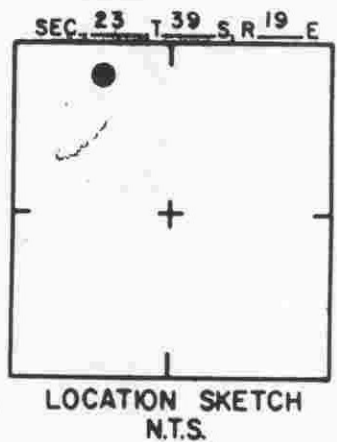
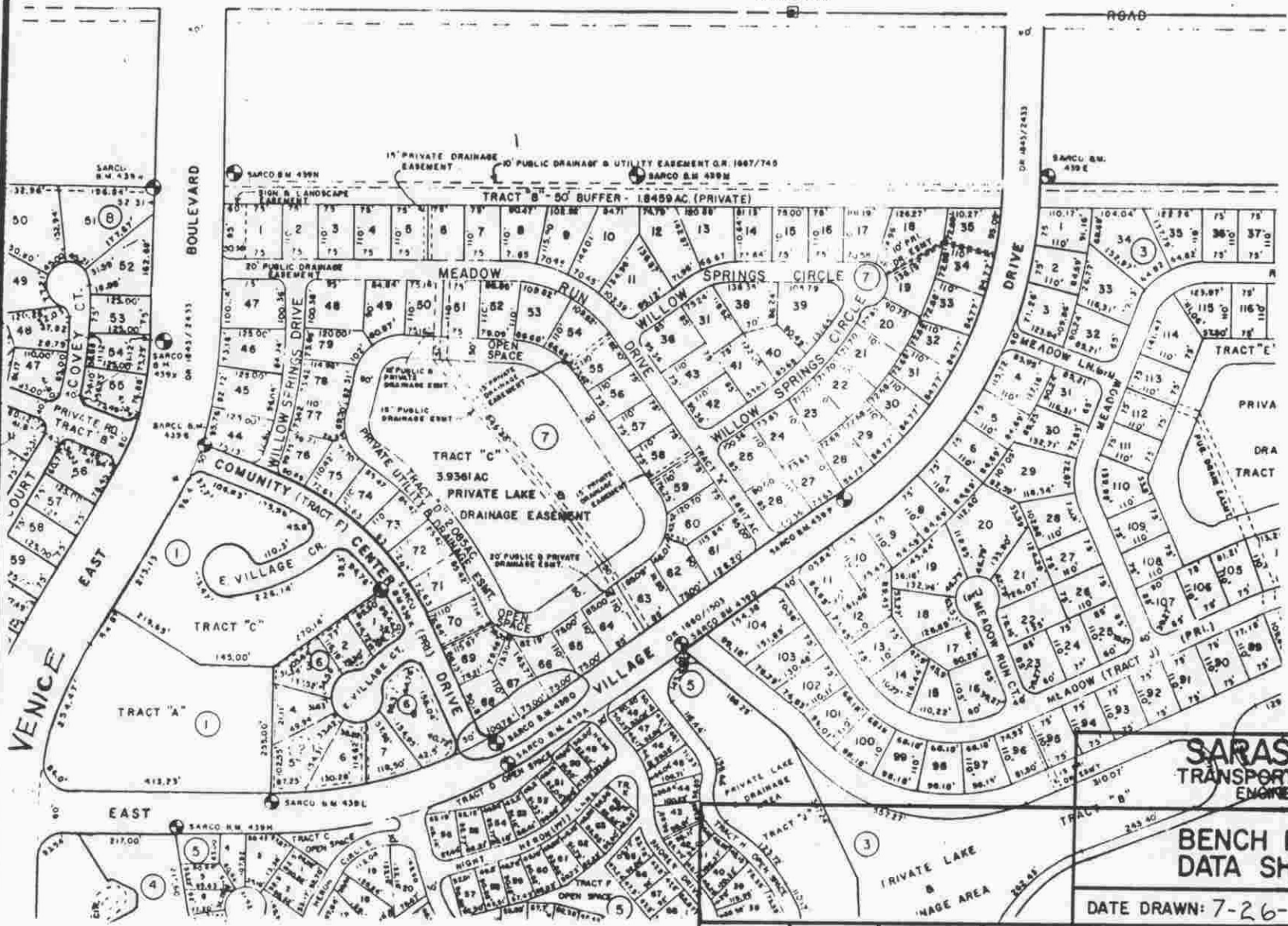


SARASOTA COUNTY
TRANSPORTATION DEPARTMENT
ENGINEERING DIVISION

**BENCH MARK
DATA SHEET**

DATE DRAWN: 7-25-88 BY: RJJ		ELEV.
REF: FB. PG. DATE		12.71
ELEV. BASED ON B.M. NO. A-252		BM. NO.
		439N

DATE	TYPE	FB. PG.	BY
REVISIONS			



**SARASOTA COUNTY
TRANSPORTATION DEPARTMENT
ENGINEERING DIVISION**

**BENCH MARK
DATA SHEET**

ELEV.
12.32'

DATE DRAWN: 7-26-88 BY: RJJ
REF: FB. PG. DATE

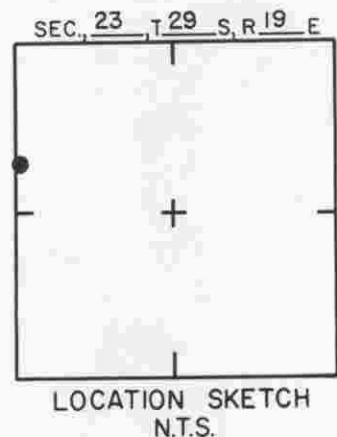
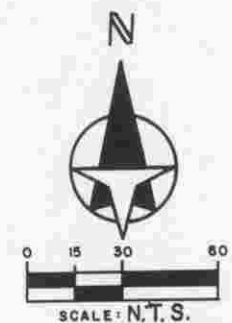
BM. NO.

DATE	TYPE	FB. PG.	BY
------	------	---------	----

REVISIONS

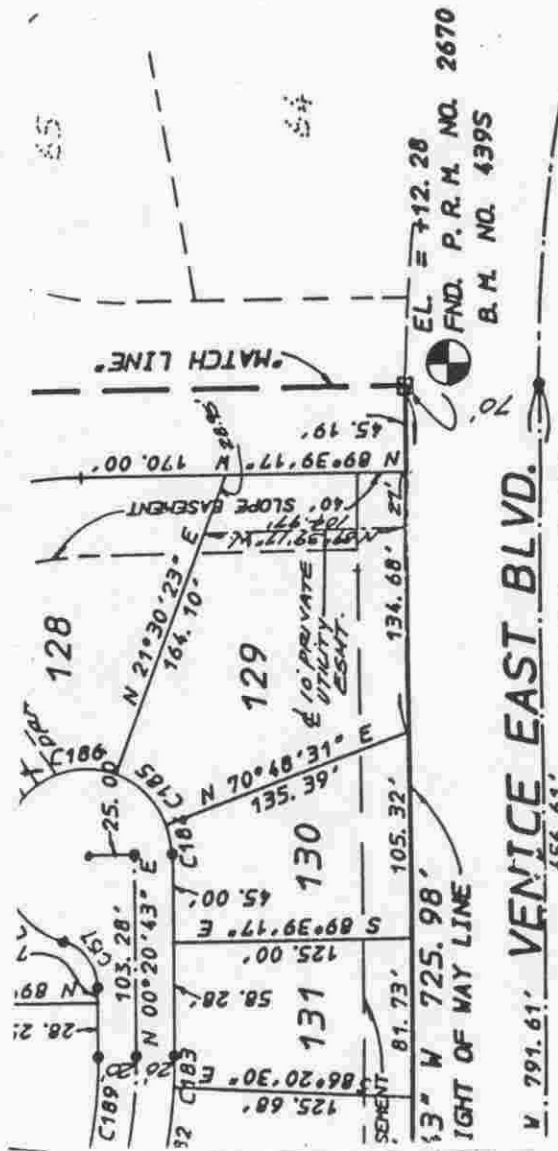
ELEV. BASED ON B.M. NO. N 6VD A-252

4390

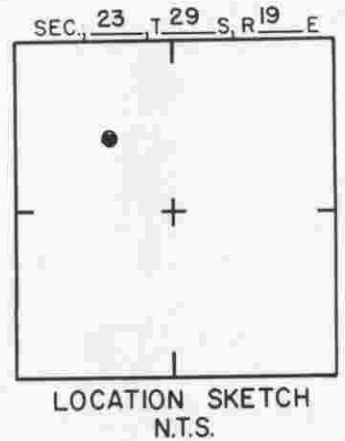
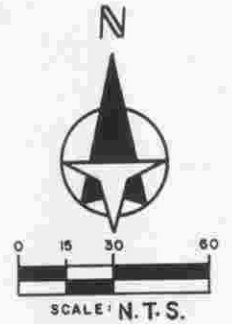


SUBD. QUAIL LAKE PLAT BOOK 32 PAGE 19

				SARASOTA COUNTY TRANSPORTATION DEPARTMENT ENGINEERING DIVISION	
				BENCH MARK DATA SHEET	
				DATE DRAWN: 3/14/88	BY: SCB
				REF: F.B.	PG. DATE
REVISIONS				ELEV. BASED ON B.M. NO.	
				ELEV.	
				12.77	
				BM. NO.	
				439R	



SUBD. QUAIL LAKE PLAT BOOK 32 PAGE 19



SARASOTA COUNTY
TRANSPORTATION DEPARTMENT
ENGINEERING DIVISION

BENCH MARK
DATA SHEET

ELEV.

12.28

BM. NO.

439S

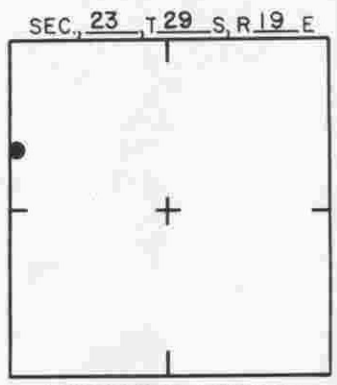
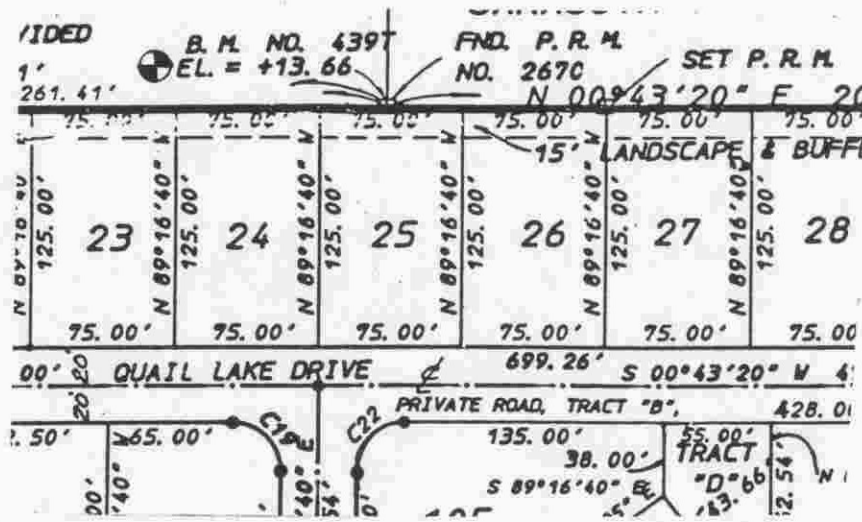
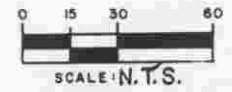
DATE DRAWN: 3/14/88 BY: SCB

REF: FB. PG. DATE

ELEV. BASED ON BM. NO.

DATE	TYPE	FB. PG.	BY
------	------	---------	----

REVISIONS



LOCATION SKETCH
N.T.S.

SUBD. QUAIL LAKE PLAT BOOK 32 PAGE 19

SARASOTA COUNTY
TRANSPORTATION DEPARTMENT
ENGINEERING DIVISION

**BENCH MARK
DATA SHEET**

ELEV.

13.66

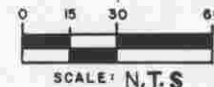
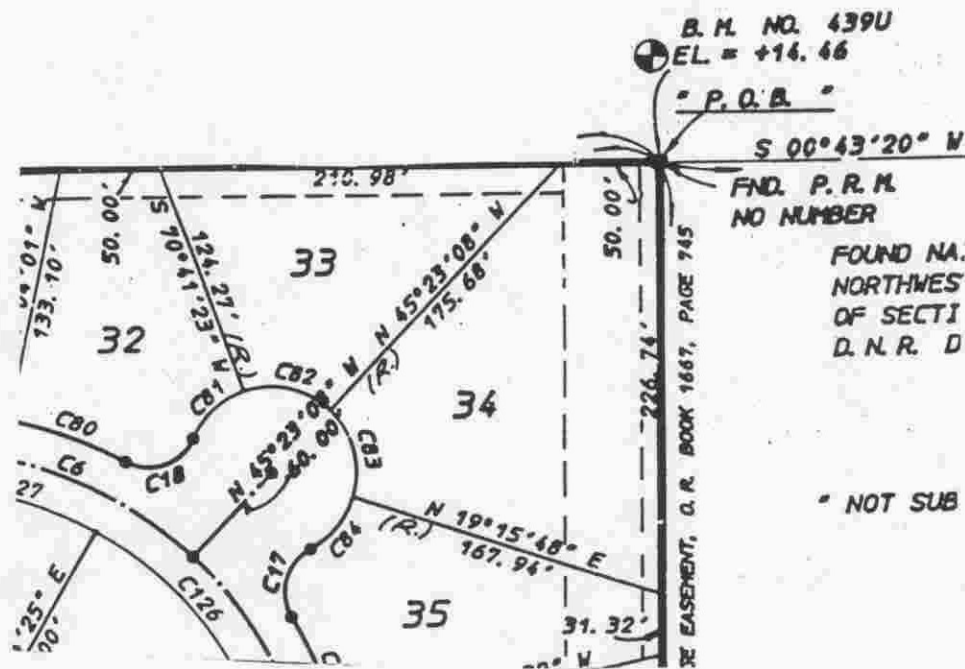
BM. NO.

439T

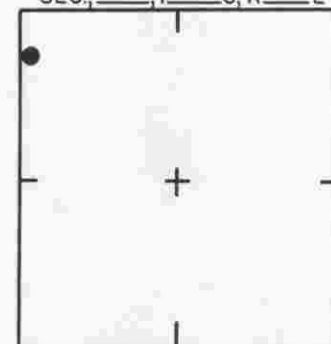
DATE DRAWN: 3/14/88 BY: SCB
REF: FB. PG. DATE

ELEV. BASED ON B.M. NO.

DATE	TYPE	FB. PG.	BY
REVISIONS			



SEC. 23 T. 29 S. R. 19 E



LOCATION SKETCH
N.T.S.

SUBD. QUAIL LAKE PLAT BOOK 32 PAGE 19

SARASOTA COUNTY
TRANSPORTATION DEPARTMENT
ENGINEERING DIVISION

**BENCH MARK
DATA SHEET**

ELEV.

14.46

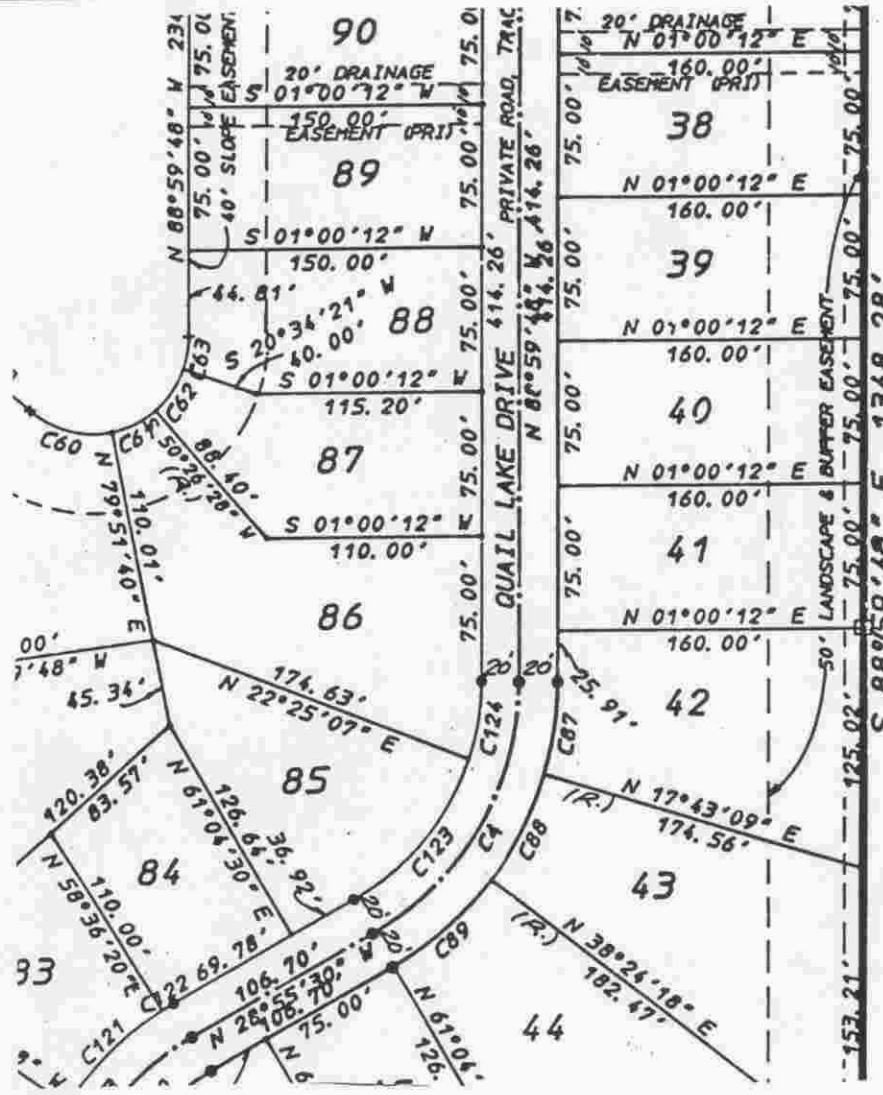
BM. NO.

439U

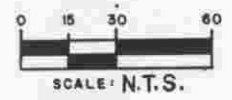
DATE DRAWN: 3/14/88 BY: SCB

DATE	TYPE	FB. PG.	BY	REF: FB.	PG.	DATE
REVISIONS						

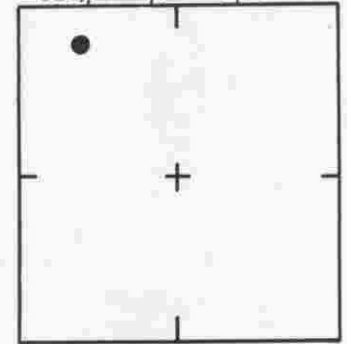
ELEV. BASED ON B.M. NO.



SUBD. QUAIL LAKE PLAT BOOK 32 PAGE 19



SEC. 23 T. 29 S. R. 19 E

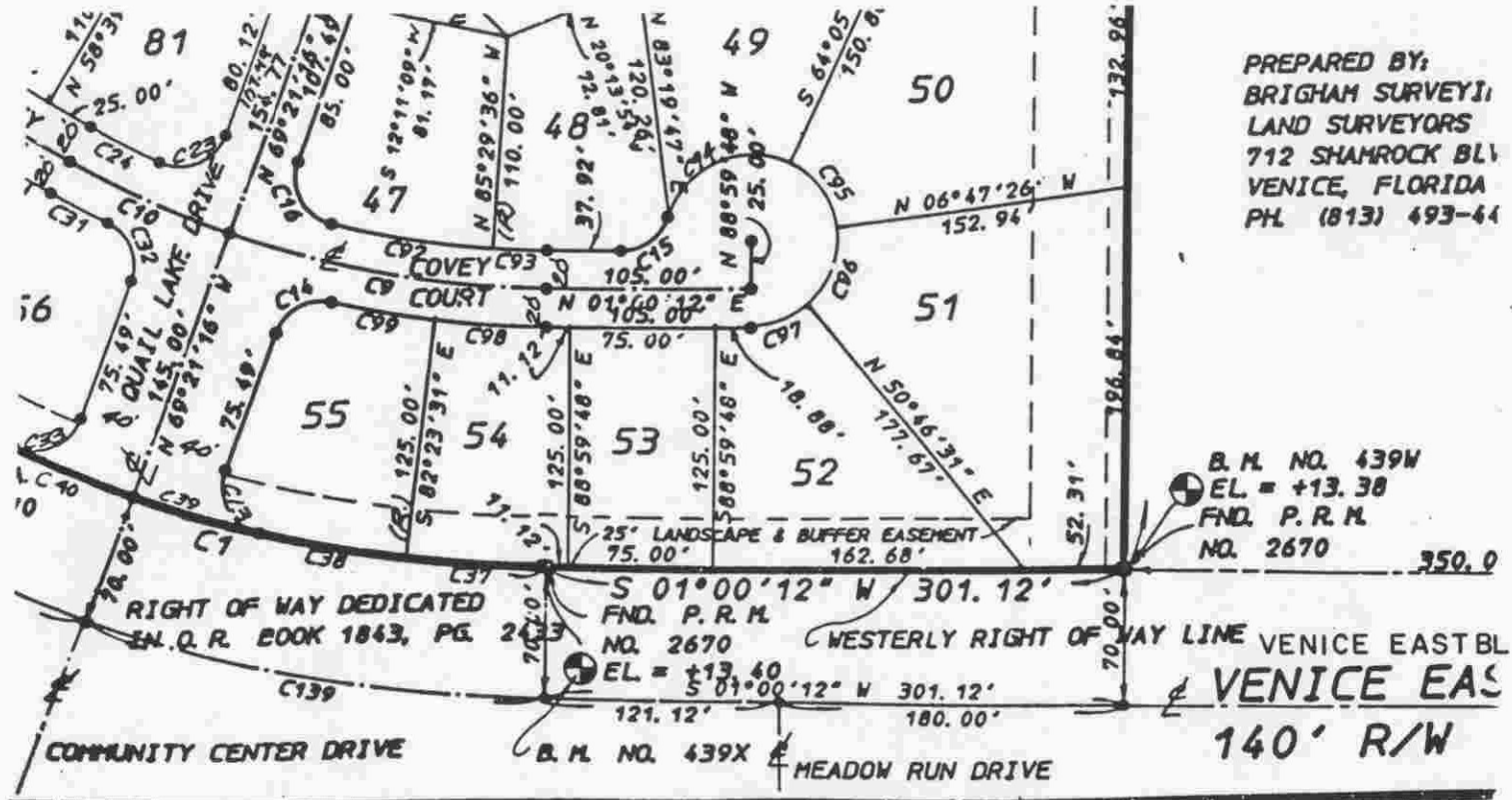


LOCATION SKETCH N.T.S.

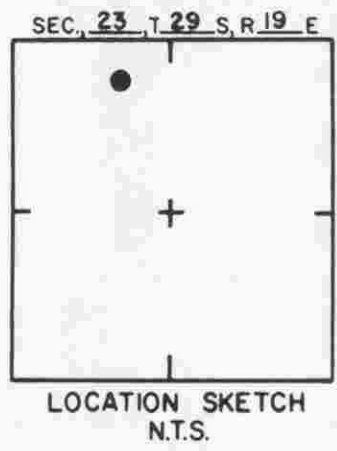
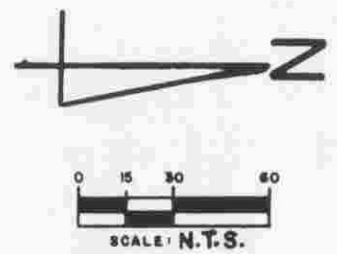
SARASOTA COUNTY
 TRANSPORTATION DEPARTMENT
 ENGINEERING DIVISION

BENCH MARK DATA SHEET

				ELEV.
				13.09
		DATE DRAWN: 3/14/88 BY: SCB		BM. NO.
DATE	TYPE	FB. PG.	BY	REF: FB. PG. DATE
REVISIONS				439V
				ELEV. BASED ON B.M. NO.



PREPARED BY:
 BRIGHAM SURVEYING
 LAND SURVEYORS
 712 SHAMROCK BLV
 VENICE, FLORIDA
 PH. (813) 493-44



SUBD. QUAIL LAKE PLAT BOOK 32 PAGE 19

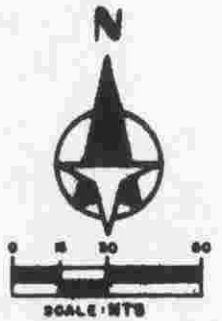
SARASOTA COUNTY
 TRANSPORTATION DEPARTMENT
 ENGINEERING DIVISION

BENCH MARK
 DATA SHEET

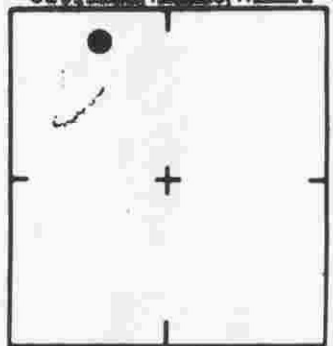
				ELEV.		
				13.38		
				BM. NO.		
				439 W		
DATE				DATE DRAWN: 3/14/88	BY: SCB	
TYPE				REF: FB.	PG.	DATE
FB. PG.				ELEV. BASED ON B.M. NO. U.S.C. & G.S. A-252		
BY				REVISIONS		

S 1/2 14-39-19 SHT. NO. 422

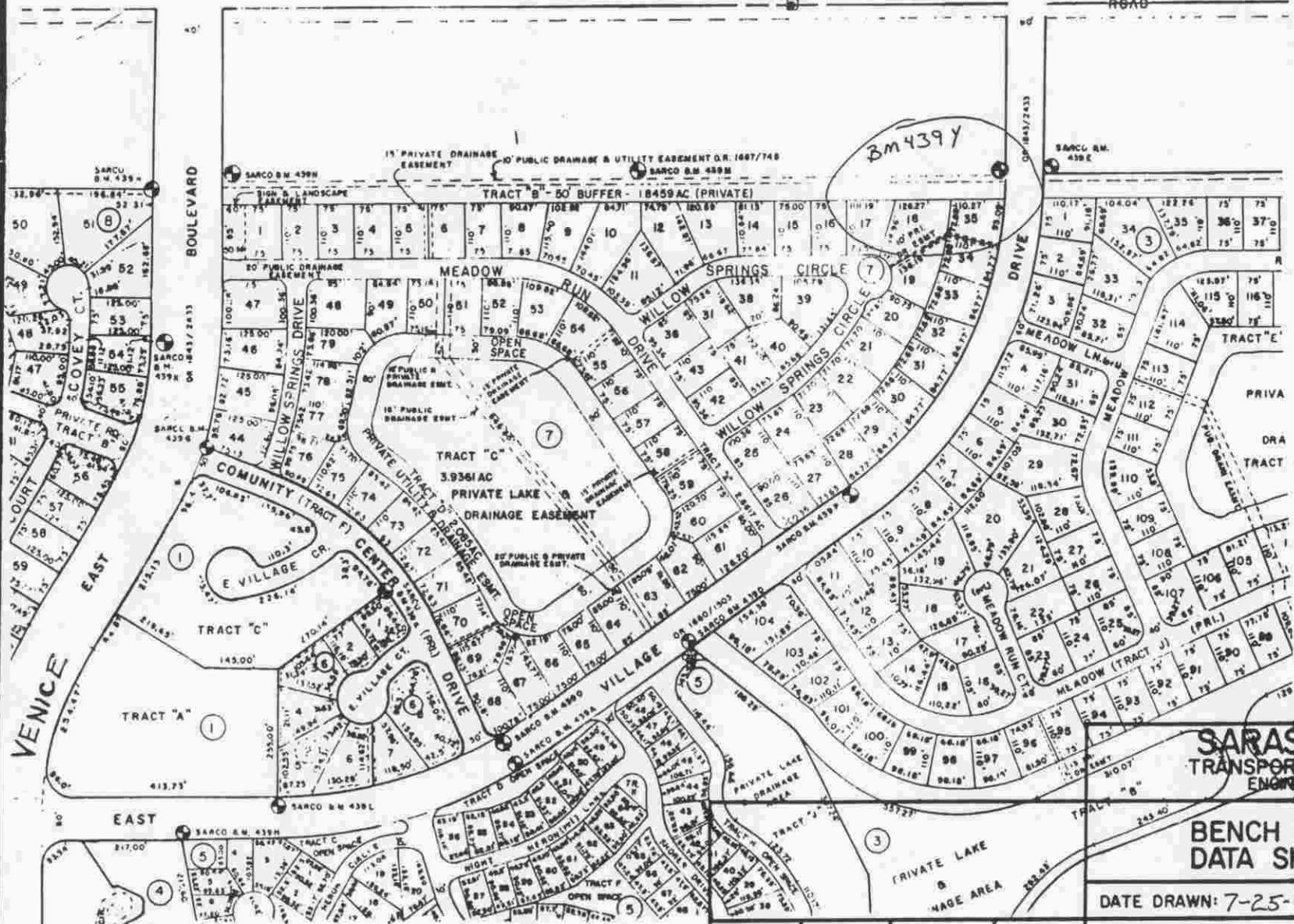
SEC. COR 879



SEC. 23 T. 39 S. R. 19 E



LOCATION SKETCH
N.T.S.



SARASOTA COUNTY
TRANSPORTATION DEPARTMENT
ENGINEERING DIVISION

**BENCH MARK
DATA SHEET**

DATE DRAWN: 7-25-88		BY: RJJ		ELEV.
REF: F.B.		PG.		12.70'
DATE		DATE		BM. NO.
ELEV. BASED ON B.M. NO. NGVD A-252		439Y		

DATE	TYPE	F.B. PG.	BY
REVISIONS			