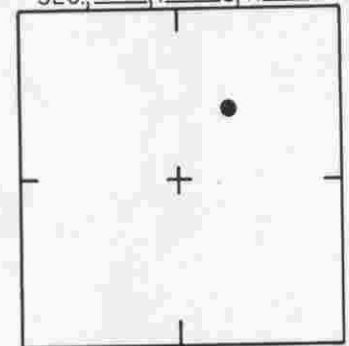
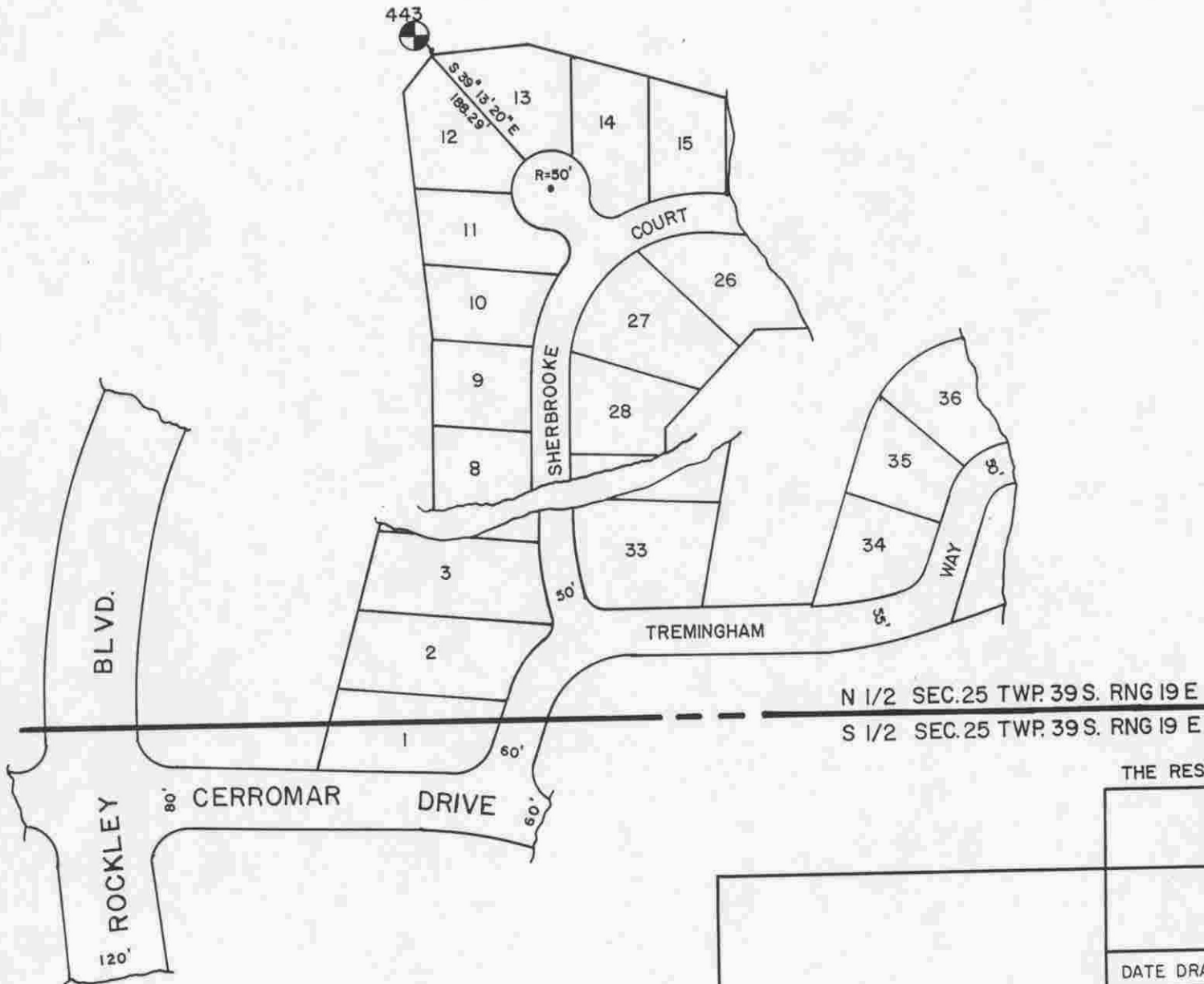


SEC. 25, T. 39 S, R. 19 E



LOCATION SKETCH  
N.T.S.

SEC. COR.  
1060



N 1/2 SEC. 25 TWP. 39 S. RNG 19 E  
S 1/2 SEC. 25 TWP. 39 S. RNG 19 E

THE RESERVE P.B. 33/26

**SARASOTA COUNTY**  
TRANSPORTATION DEPARTMENT  
ENGINEERING DIVISION

**BENCH MARK  
DATA SHEET**

ELEV.

12.19'

BM. NO.

DATE DRAWN: 10-24-89

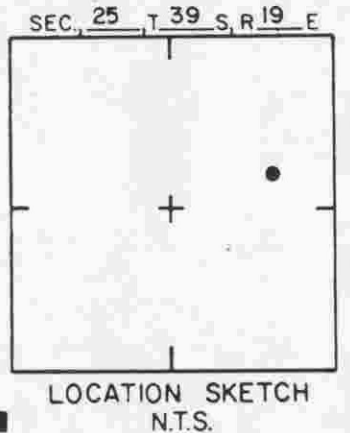
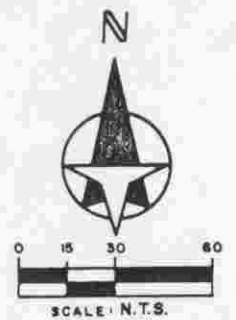
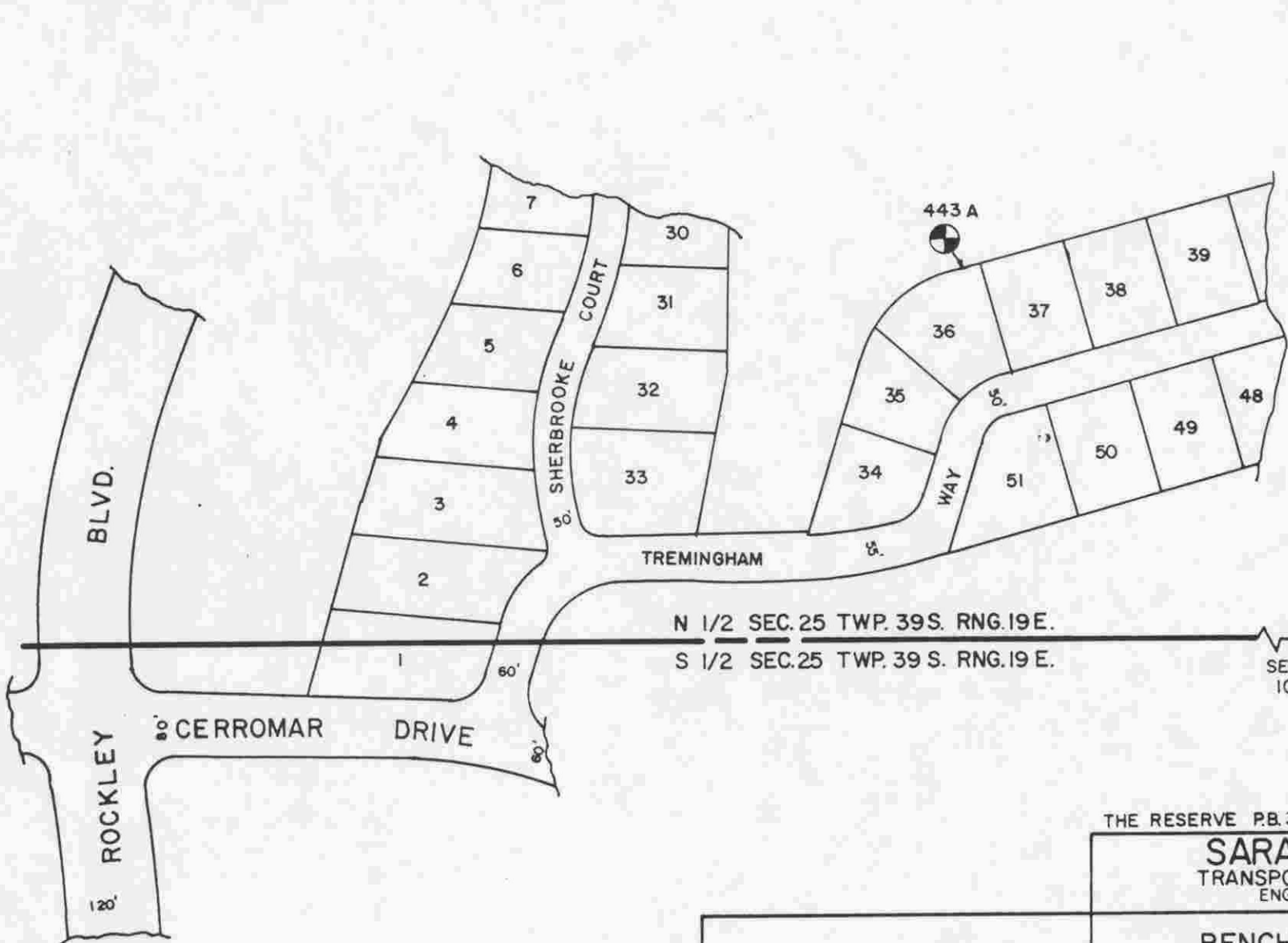
BY: KLP

SET BY: LESLIE, HICKS, & STRAYER

443

ELEV. BASED ON B.M. NO. USC. & GS. Y-255

DATE	TYPE	FB. PG.	BY
REVISIONS			



N 1/2 SEC. 25 TWP. 39 S. RNG. 19 E.  
 S 1/2 SEC. 25 TWP. 39 S. RNG. 19 E.

SEC. COR.  
1060

THE RESERVE P.B. 33/26

**SARASOTA COUNTY**  
 TRANSPORTATION DEPARTMENT  
 ENGINEERING DIVISION

**BENCH MARK  
 DATA SHEET**

ELEV.

11.95'

BM. NO.

443 A

DATE DRAWN: 10-24-89 BY: KLP

SET BY: LESLIE, HICKS, & STRAYER

ELEV. BASED ON BM. NO. U.S.C. & G.S. Y-255

DATE	TYPE	FB. PG.	BY
REVISIONS			