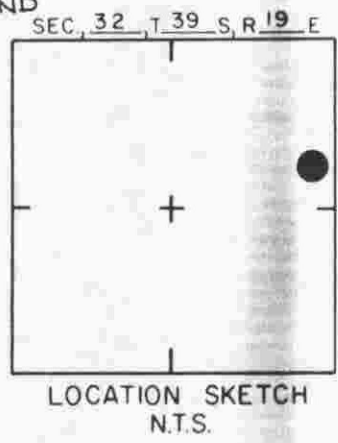
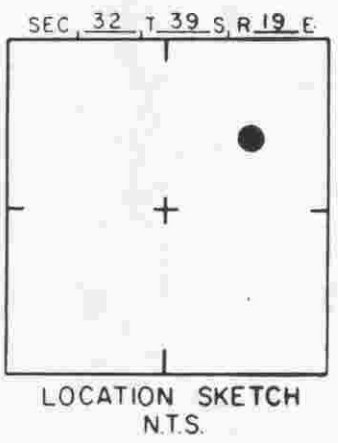
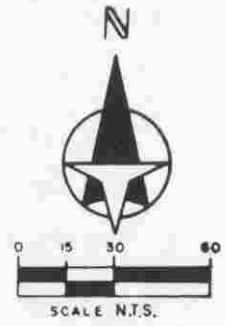
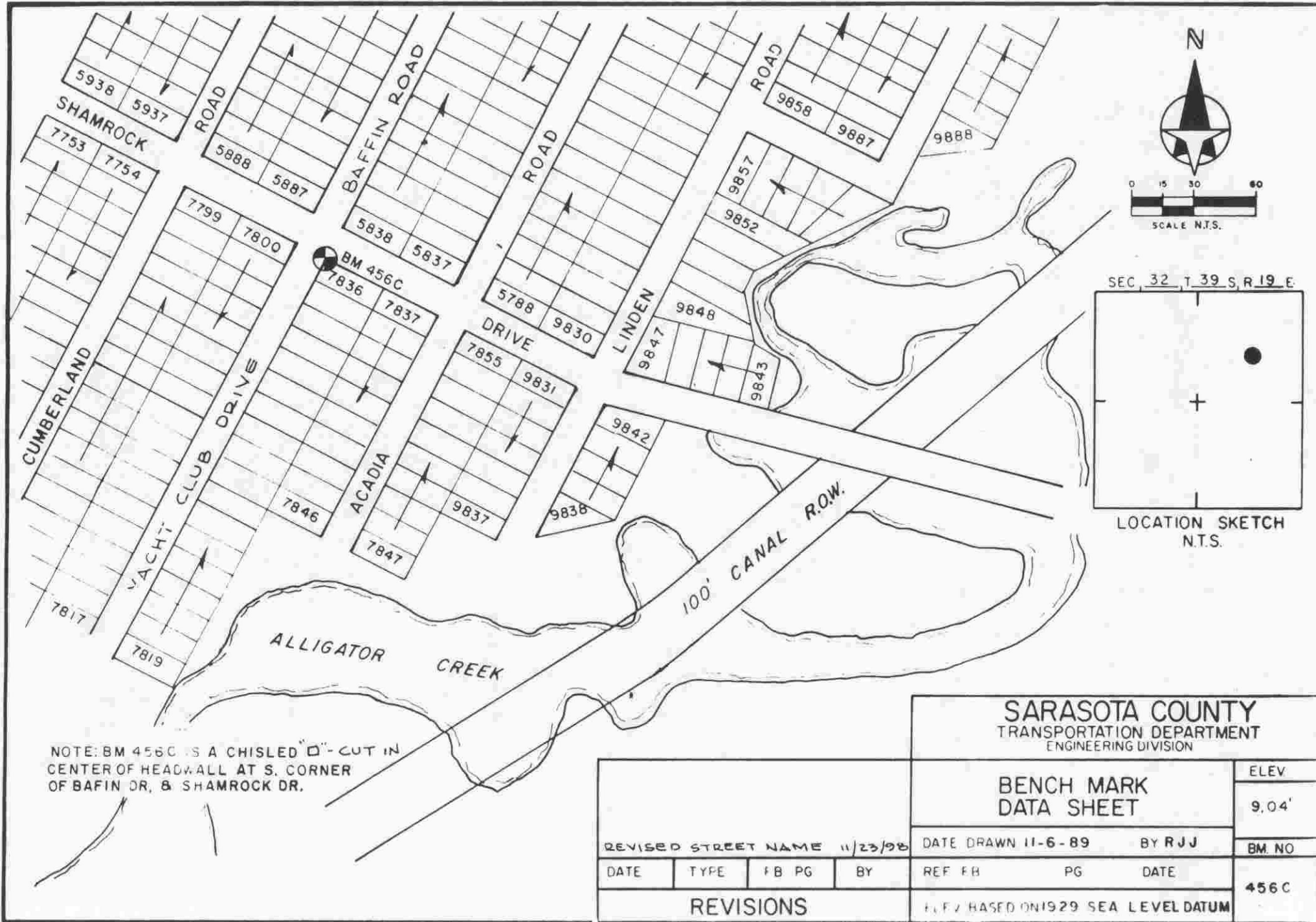


BM - CHISEL \square IN WEST END OF HEADWALL AT NORTH CORNER OF LEMON BAY DRIVE AND MERIDIAN RD.



SOUTH VENICE
UNIT #19
PB 6/62

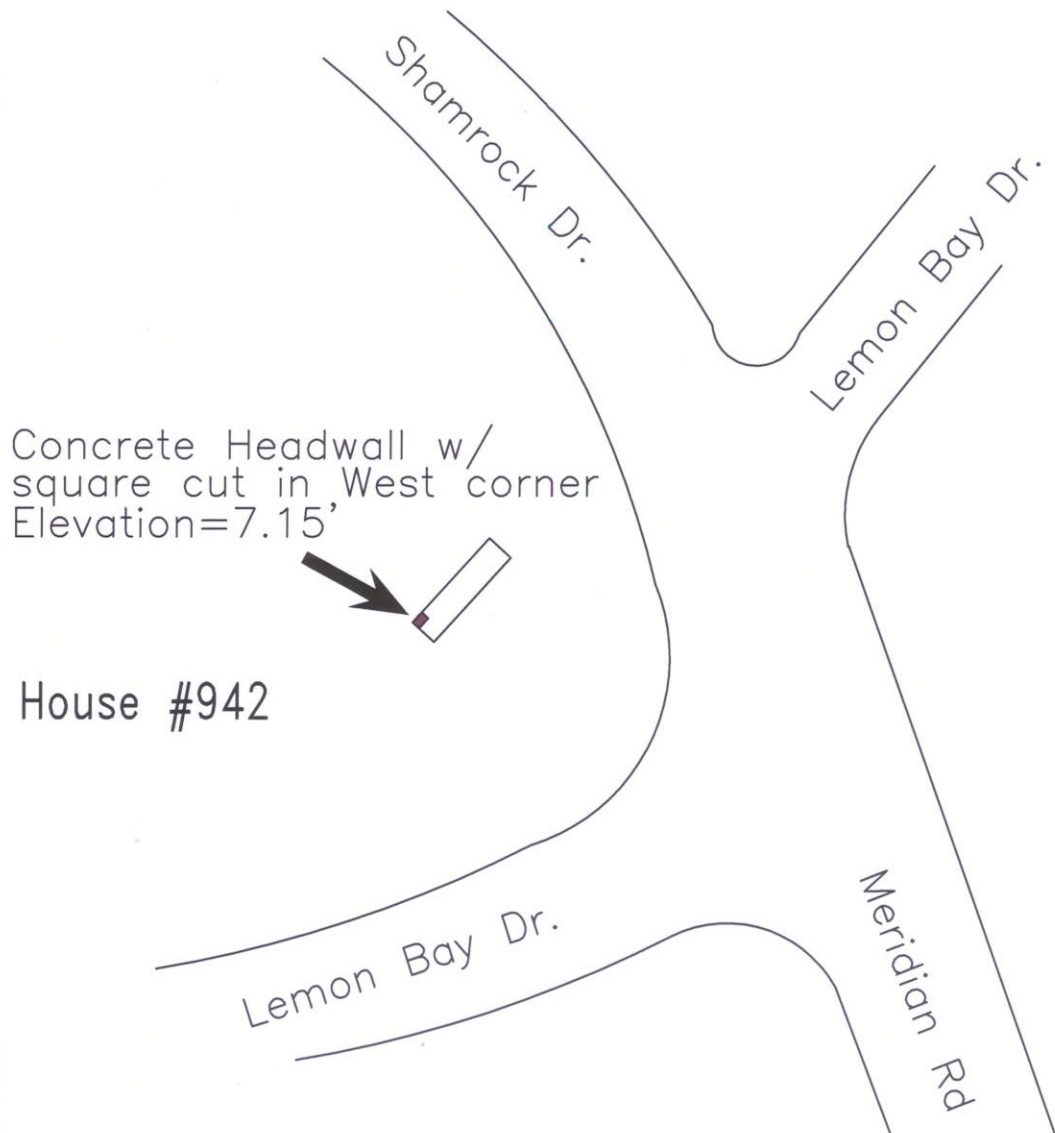
SARASOTA COUNTY		ELEV
TRANSPORTATION DEPARTMENT ENGINEERING DIVISION		
BENCH MARK DATA SHEET		7.80'
REVISED LOCATION - 11/13/98		DATE DRAWN 10-31-89 BY RJJ
DATE	TYPE	FB
		PG
		BY
REVISIONS		BM. NO.
		456A
		ELEV BASED ON BM. NO 1929 SEA LEVEL



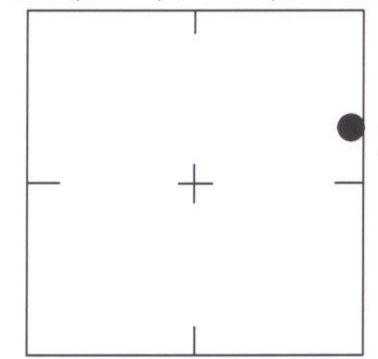
NOTE: BM 456C IS A CHISELED "D"-CUT IN CENTER OF HEADWALL AT S. CORNER OF BAFIN DR. & SHAMROCK DR.

SARASOTA COUNTY
TRANSPORTATION DEPARTMENT
ENGINEERING DIVISION

BENCH MARK DATA SHEET		ELEV
		9.04'
REVISED STREET NAME 11/23/98		DATE DRAWN 11-6-89 BY RJJ
DATE	TYPE	FB PG BY
REF FB		PG DATE
REVISIONS		BM. NO
		456C
ELEV. BASED ON 1929 SEA LEVEL DATUM		



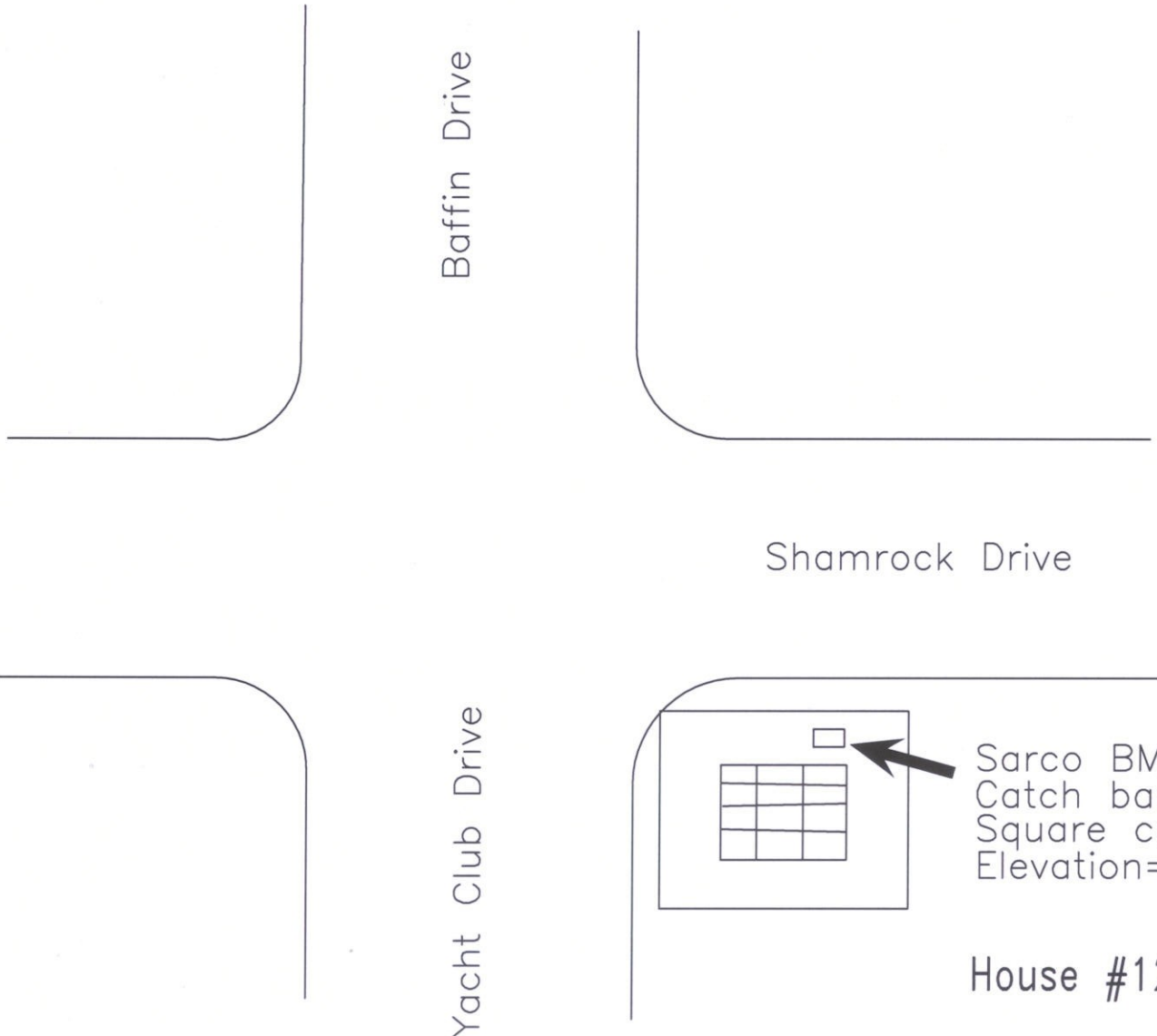
SEC., 32 ,T 39 S,R 19 E



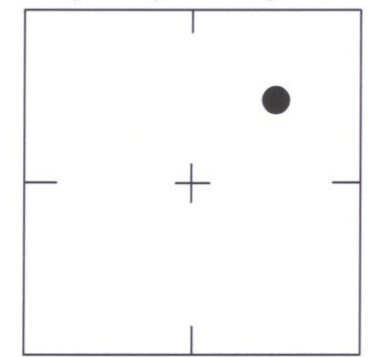
LOCATION SKETCH
N.T.S.

SARASOTA COUNTY
Geomatics Service Center
SURVEY/MAPPING SECTION

WGS 84	Lat:N27° 02' 40.9"	REVISIONS / REMARKS Elevation Revised 3/13/07	BENCH MARK DATA SHEET	ELEV.
	Lon:W82° 25' 06.7"			7.15'
FL W. 83	N. 985644.463'	SET BY: SARCO	DATE DRAWN: 3/13/2007 BY: MW	NGVD 29'
	E. 519939.024'		REF.:DL 2 PG.66-81 DATE: 2/16/07	B.M. NO.
			ELEV. BASED ON B.M. NO. 433	R456A



SEC., 32 , T 39 S, R 19 E



LOCATION SKETCH
N.T.S.

Sarco BM
Catch basin w/grate
Square cut in conc.
Elevation=8.71'

House #1219

SARASOTA COUNTY
Geomatics Service Center
SURVEY/MAPPING SECTION

WGS 84	Lat: N27° 02' 46.4"	REVISIONS / REMARKS	BENCH MARK DATA SHEET	ELEV.
	Lon: W82° 25' 21.9"			8.71'
FL W. 83	N. 986204.421'	SET BY: SARCO	DATE DRAWN: 2/16/2007 BY: MW	NGVD 29'
	E. 518566.571'		REF.: DL 2 PG. 66-81 DATE: 2/16/07	B.M. NO.
			ELEV. BASED ON B.M. NO. 433	R456C