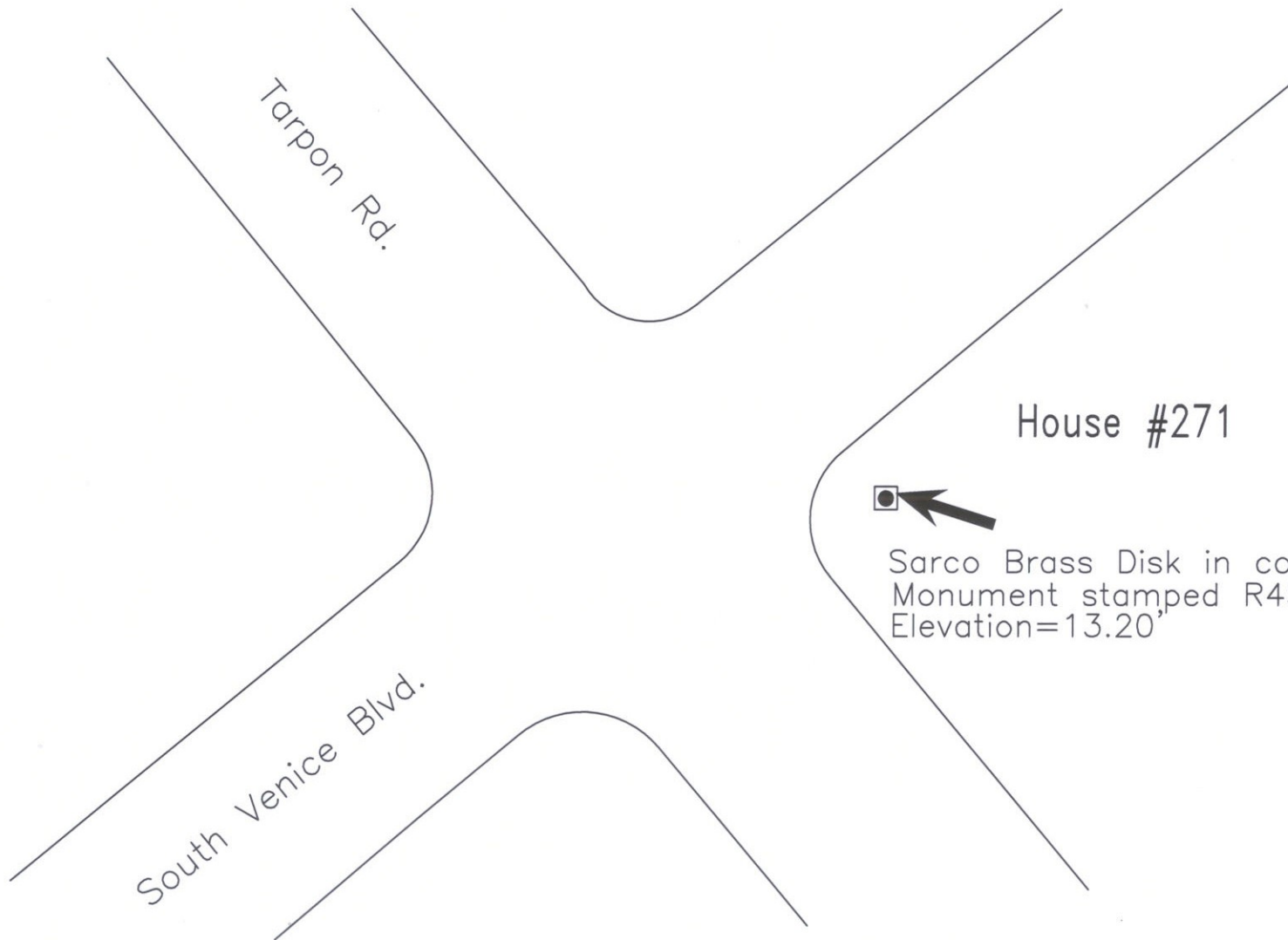


SARASOTA COUNTY TRANSPORTATION DEPARTMENT ENGINEERING DIVISION			
BENCH MARK DATA SHEET			ELEV. 13,48
DATE DRAWN: JUNE 1983		BY: DBP	
REF: FB. BM PG. 458			BM. NO. 458
ELEV. BASED ON BM. NO. ?			

REVISIONS			
DATE	TYPE	FB. PG.	BY

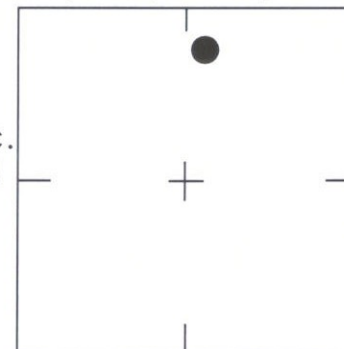


House #271



Sarco Brass Disk in conc.
Monument stamped R458
Elevation=13.20'

SEC., 33 , T 39 S, R 19 E



LOCATION SKETCH
N.T.S.

SARASOTA COUNTY

Geomatics Service Center
SURVEY/MAPPING SECTION

WGS 84	Lat: N27° 02' 55.0"	REVISIONS / REMARKS ELEVATION REVISED 2/26/07	BENCH MARK DATA SHEET	ELEV.
	Lon: W82° 24' 36.6"			13.20'
FL W. 83	N. 987059.279'	SET BY: SARCO	DATE DRAWN: 2/27/2007 BY: SJ	NGVD 29'
	E. 522665.166'		REF.: DL 2 PG. 66-81 DATE: 2/26/07	B.M. NO. R458
			ELEV. BASED ON B.M. NO. 433	