

**SARASOTA COUNTY**  
 TRANSPORTATION DEPARTMENT  
 ENGINEERING DIVISION

<b>BENCH MARK DATA SHEET</b>		ELEV.
		31.12
DATE DRAWN: JUNE 1983 BY: DBP		BM. NO.
REF: F.B. BM	PG. 46 A	DATE ?
ELEV. BASED ON BM. NO. ?		46 A

11/2/84 Added Pine Tree SEH			
DATE	TYPE	F.B. PG.	BY
REVISIONS			

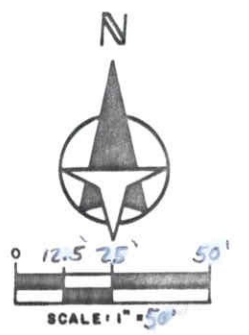
Portion  
MANOR

CLIFFORD  
AVE.

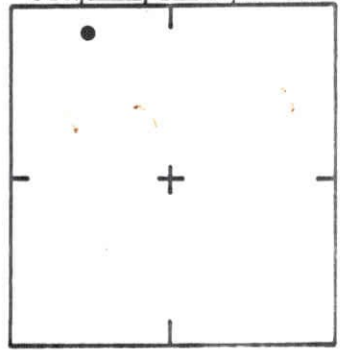
of  
(F.B. 7 - PG. 1

Richardson  
Road

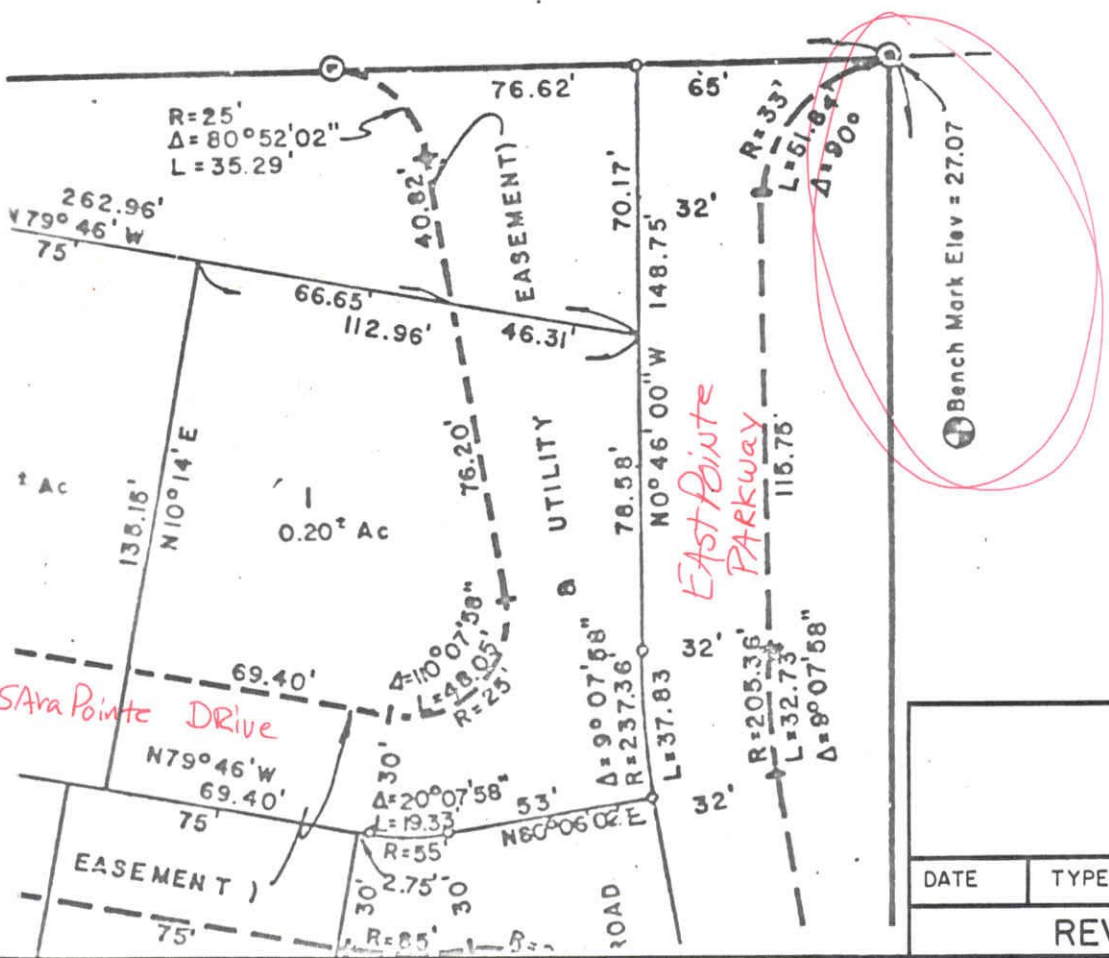
2, Pgs. 23, 32, 37, etc.)



SEC. 24 T. 36 S. R. 18 E



LOCATION SKETCH  
N.T.S.

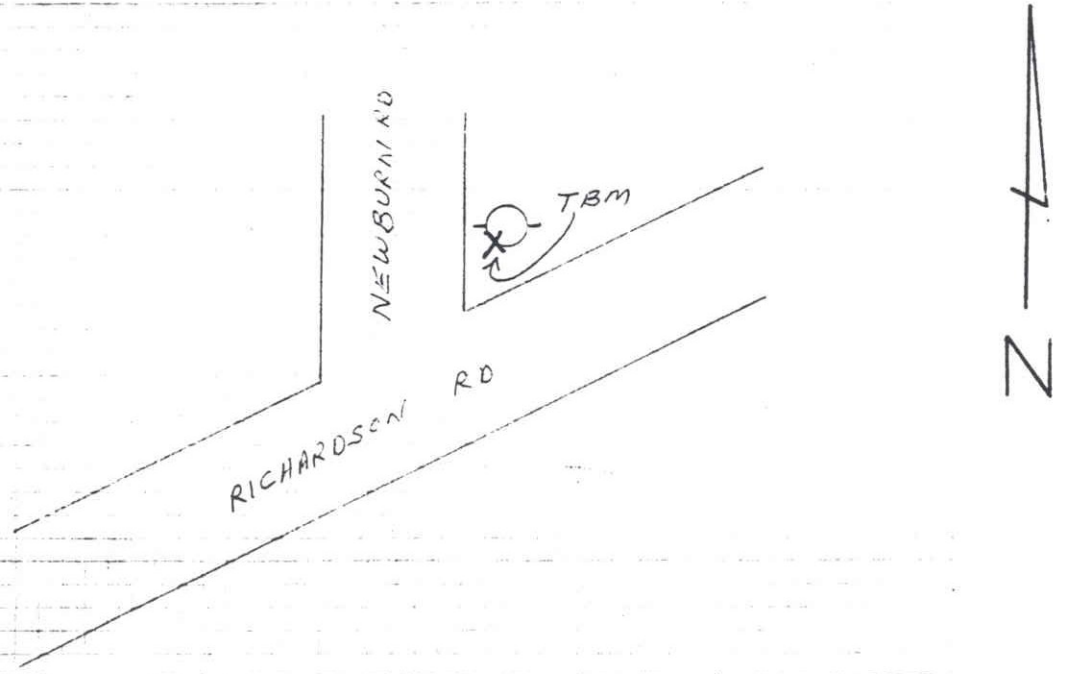
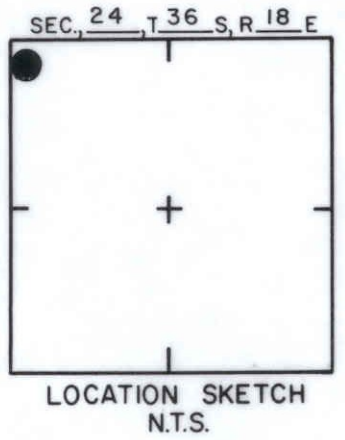
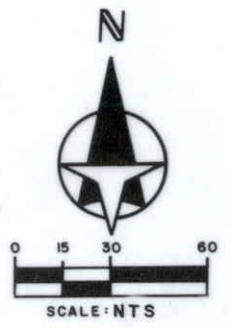


SARASOTA COUNTY  
TRANSPORTATION DEPARTMENT  
ENGINEERING DIVISION

BENCH MARK DATA SHEET		ELEV.
		27.07'
DATE DRAWN: 3/86		BY: PJB
REF: P.B. 31 PG. 1A		DATE 3/86
ELEV. BASED ON B.M. NO. SARCO. B.M. 44		46 C

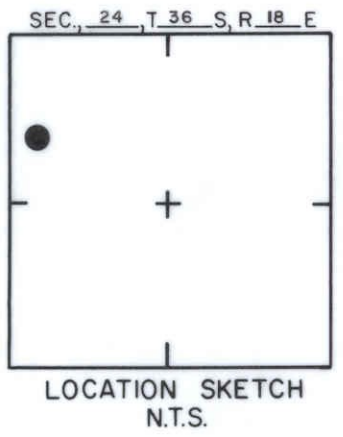
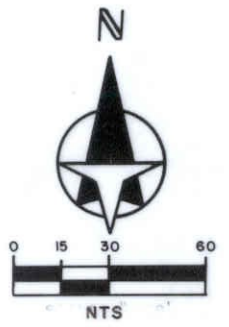
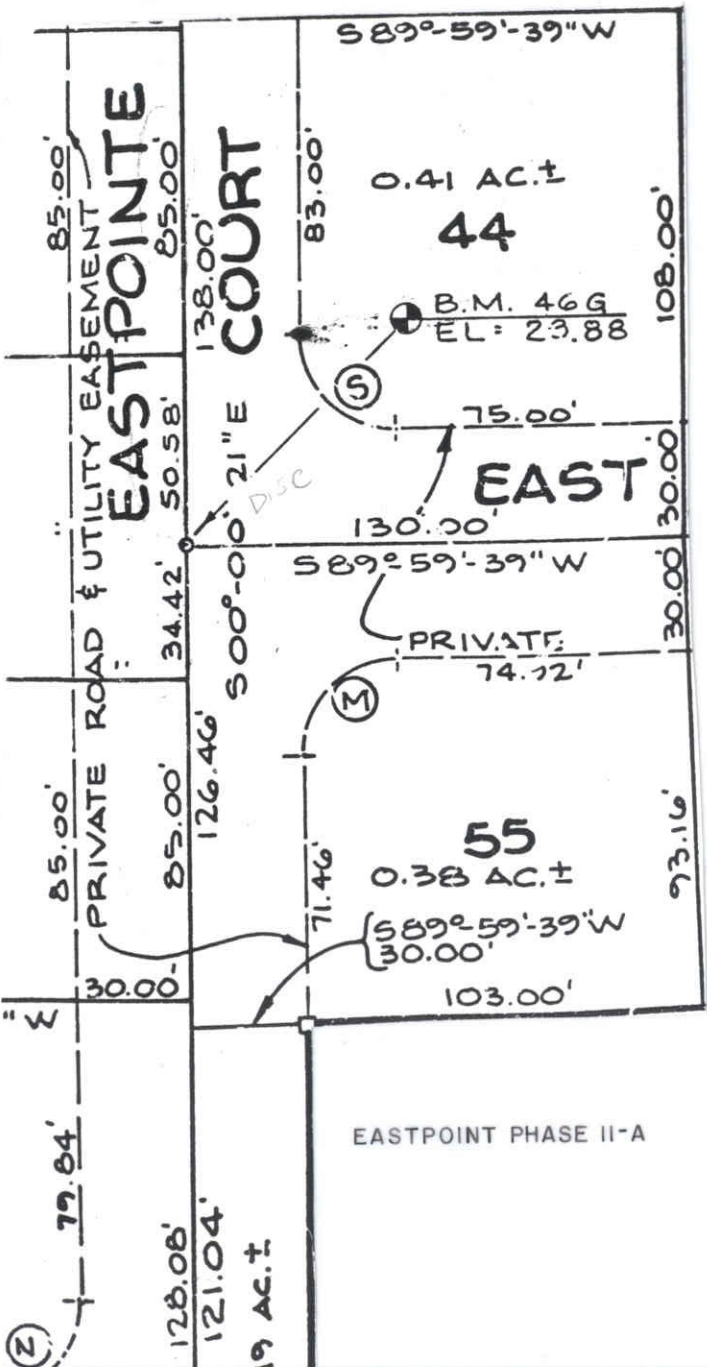
DATE	TYPE	F.B. PG.	BY
REVISIONS			

TO REACH THE MARK FROM AT INTER NEWBURN RD. & RICHARDSON RD;  
TBM IS RR SPIKE IN SW FACE P-POLE

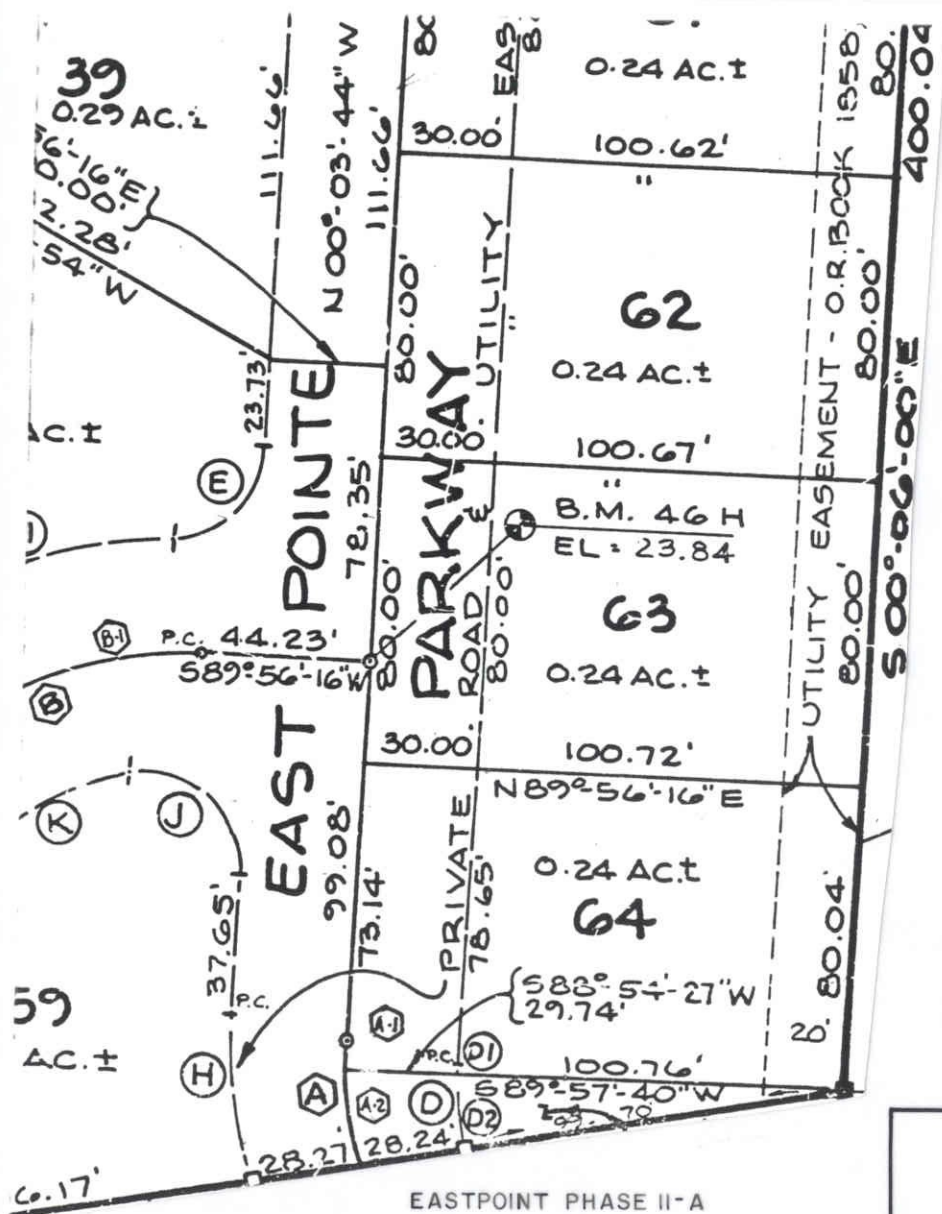


<b>SARASOTA COUNTY</b> TRANSPORTATION DEPARTMENT ENGINEERING DIVISION			
<b>BENCH MARK DATA SHEET</b>			ELEV. 25.57
DATE DRAWN: 1-27-87		BY: RJJ	
REF: SWFWMD HFH.143			BM. NO. 46E
ELEV. BASED ON B.M. NO. NOS			

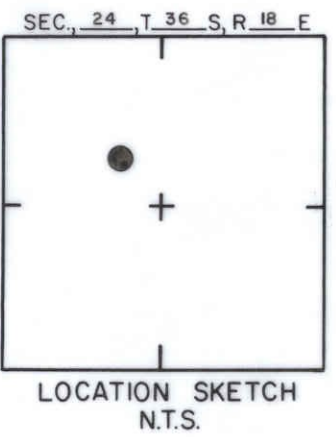
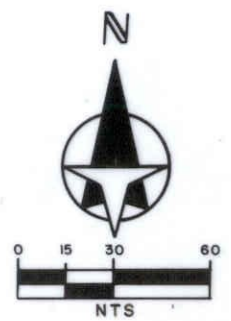
DATE	TYPE	FB. PG.	BY
REVISIONS			



<p align="center"><b>SARASOTA COUNTY</b> TRANSPORTATION DEPARTMENT ENGINEERING DIVISION</p>		<p align="center"><b>BENCH MARK DATA SHEET</b></p>		ELEV.
				23.88'
		DATE DRAWN: 10-5-87	BY: PAR	BM. NO.
DATE	TYPE	FB. PG.	BY	REF: FB. 32 PG. 7 DATE
<p align="center"><b>REVISIONS</b></p>				466
				ELEV. BASED ON BM. NO.



EASTPOINT PHASE II-A



<b>SARASOTA COUNTY</b> TRANSPORTATION DEPARTMENT ENGINEERING DIVISION			
<b>BENCH MARK DATA SHEET</b>			ELEV.  23.84'
DATE DRAWN: 10-5-87		BY: PAR	
REF: F.B. 32 PG. 7			DATE
ELEV. BASED ON B.M. NO.			46 H

DATE	TYPE	F.B. PG.	BY
REVISIONS			