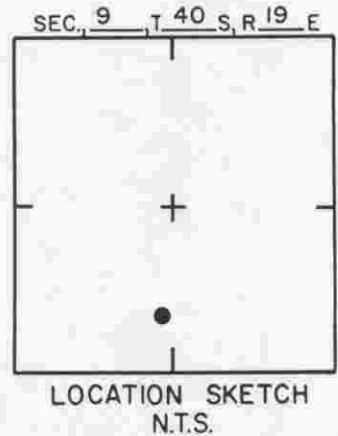
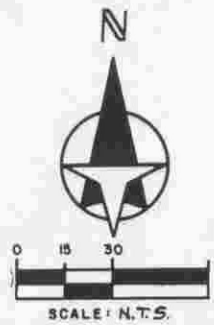


B.M. 476B
 DNR Disc Stamped C 13-A
 in Conc. Drive
 at House No. 8470



SARASOTA COUNTY
 TRANSPORTATION DEPARTMENT
 ENGINEERING DIVISION

**BENCH MARK
 DATA SHEET**

ELEV.

10.64'

BM. NO.

476B

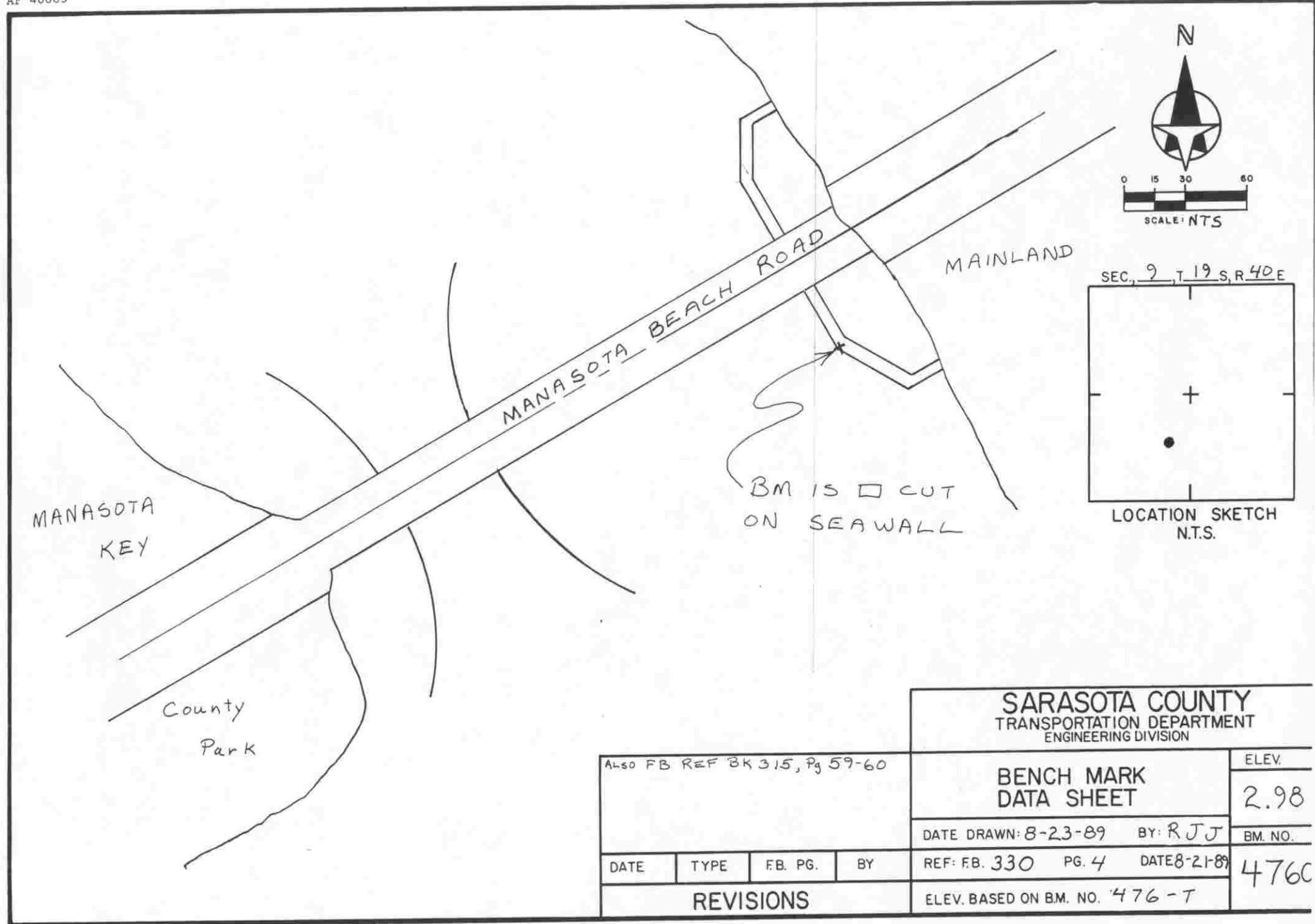
July 88 Changed from 476A to 476B RJJ

DATE DRAWN: 6/17/86 BY: WFW

REF: FB. 264 PG. 42-72 DATE 3/14/86

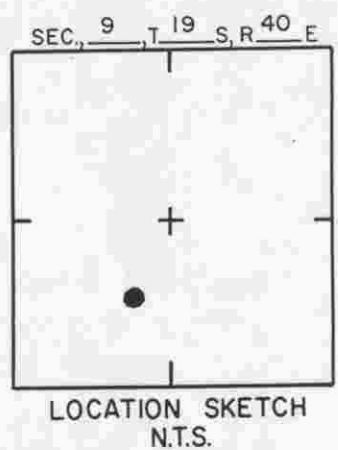
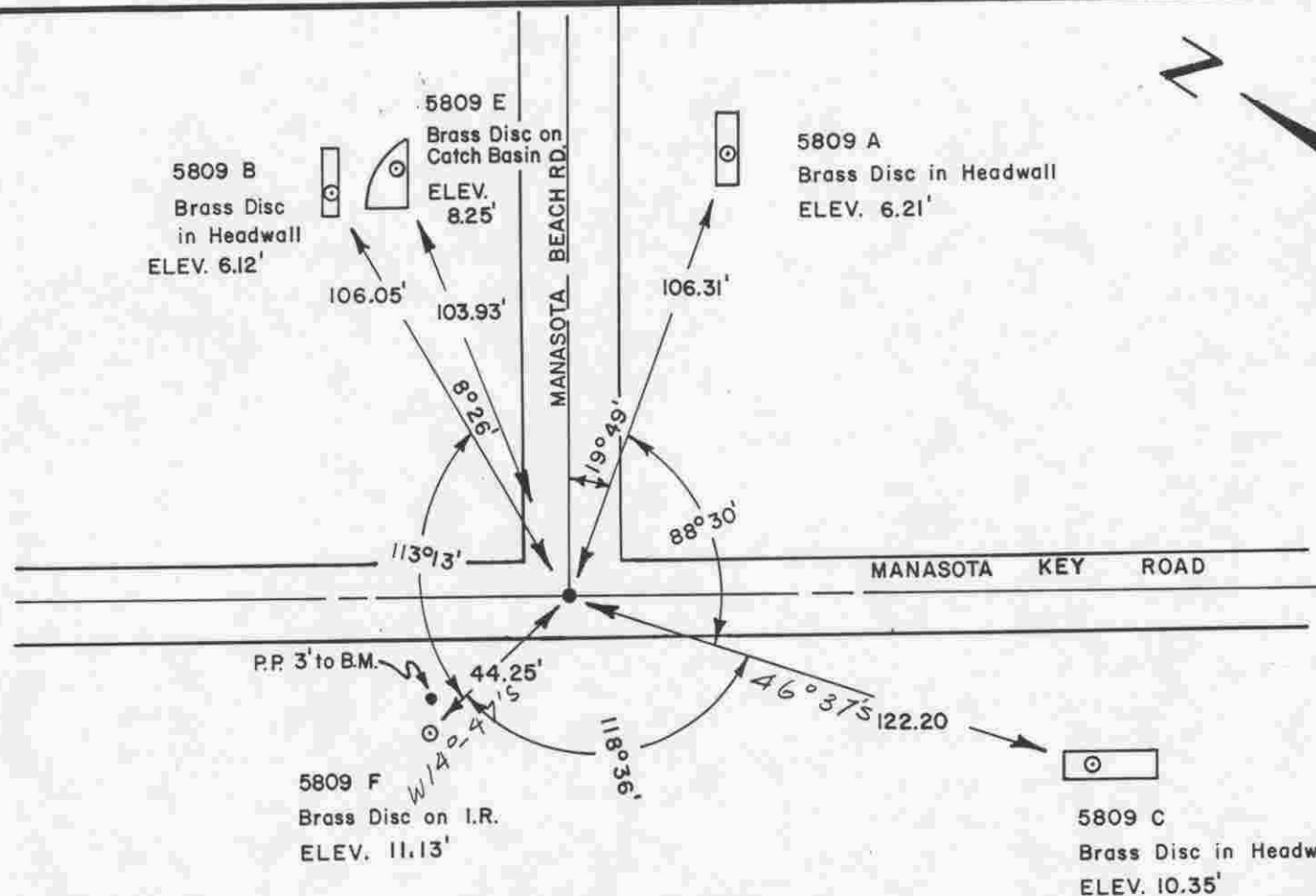
ELEV. BASED ON BM. NO. 476-T

DATE	TYPE	FB. PG.	BY
REVISIONS			



SARASOTA COUNTY
 TRANSPORTATION DEPARTMENT
 ENGINEERING DIVISION

ALSO FB REF BK 315, Pg 59-60				BENCH MARK DATA SHEET	ELEV.
					2.98
				DATE DRAWN: 8-23-89 BY: RJJ	BM. NO.
				REF: FB. 330 PG. 4 DATE 8-21-89	4760
REVISIONS				ELEV. BASED ON BM. NO. 476-T	



TIDAL STATION 5809
Manasota Beach

NOTE: Elevations Est. by S.W.&N.,
based on S.W.N. B.M. N95 per
run between (C.G.S.) S-255 and 66 ERS.

SARASOTA COUNTY
TRANSPORTATION DEPARTMENT
ENGINEERING DIVISION

BENCH MARK
DATA SHEET

				DATE DRAWN: 9-6-83		BY: DBP		ELEV.
				REF: FB. 259		PG. 20		BM. NO.
				DATE 9-1-83				476T
REVISIONS				ELEV. BASED ON B.M. NO.		SEE NOTE		