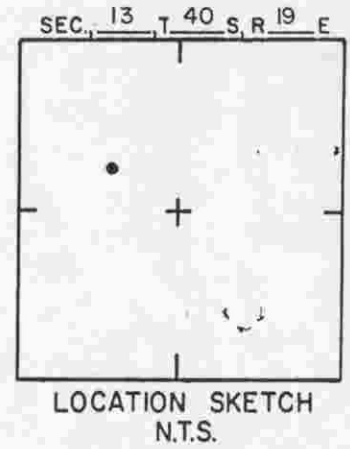
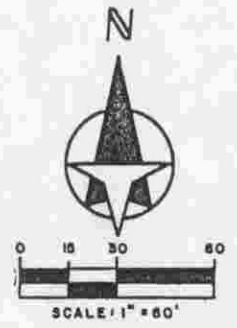
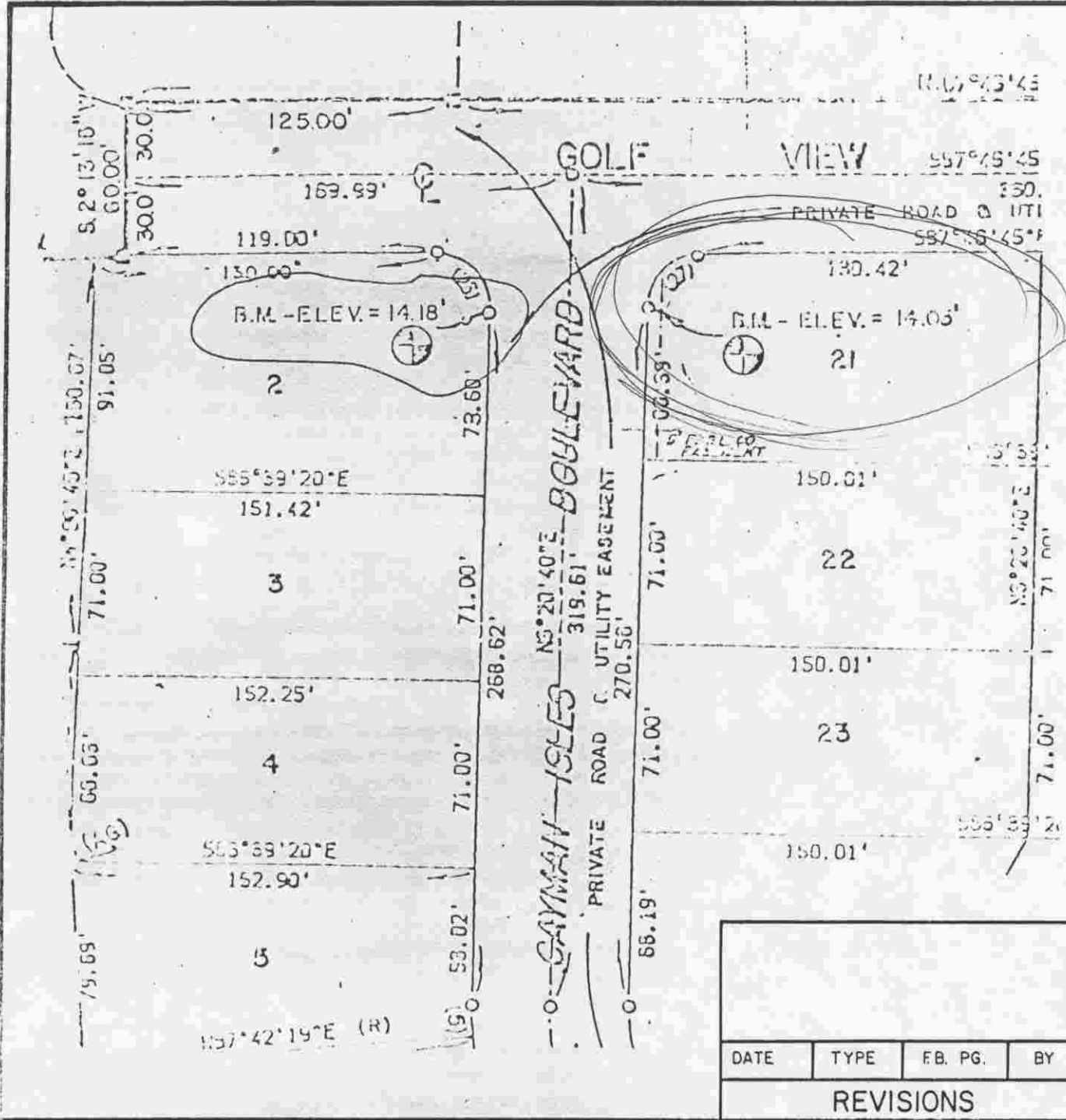


SARASOTA COUNTY TRANSPORTATION DEPARTMENT ENGINEERING DIVISION			
BENCH MARK DATA SHEET			ELEV. 14.18'
DATE DRAWN: 12/85		BY: PJB	
REF: PB. 30		PG. 12	
DATE: 12/85		BM. NO. 483	
ELEV. BASED ON B.M. DNR SAR. 16			

DATE	TYPE	FB. PG.	BY
REVISIONS			



SARASOTA COUNTY
TRANSPORTATION DEPARTMENT
ENGINEERING DIVISION

BENCH MARK
DATA SHEET

ELEV.
14.05'
BM. NO.

DATE DRAWN: 12/85 BY: PJB

REF: PB. 30 PG. 12 DATE 12/85

ELEV. BASED ON B.M. DNR SAR. 16

DATE	TYPE	FB. PG.	BY
REVISIONS			

483A

NORTH CAYMAN ISLES BLVD.

ENGLEWOOD GOLF COURSE UNIT 4
P.B. 33, Pg. 20-20C

LOT 1

SARCO BM 483-B
ELEVATION 15.58'

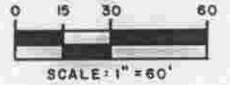
P.R.M. SET
#3979

170±'

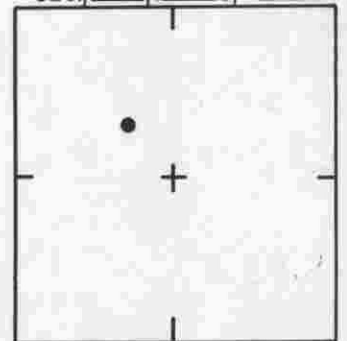
30'
30'

GOLF VIEW DRIVE

CAYMAN ISLES BLVD.



SEC. 13, T. 40 S, R. 19 E



LOCATION SKETCH
N.T.S.

SARASOTA COUNTY
TRANSPORTATION DEPARTMENT
ENGINEERING DIVISION

BENCH MARK
DATA SHEET

ELEV.

15.58'

BM. NO.

483-B

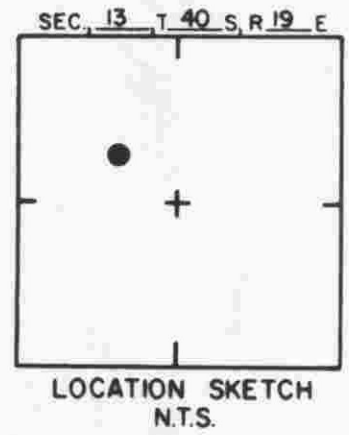
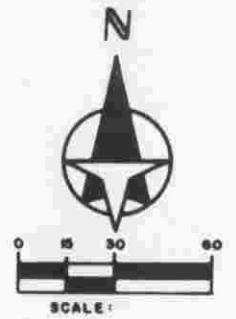
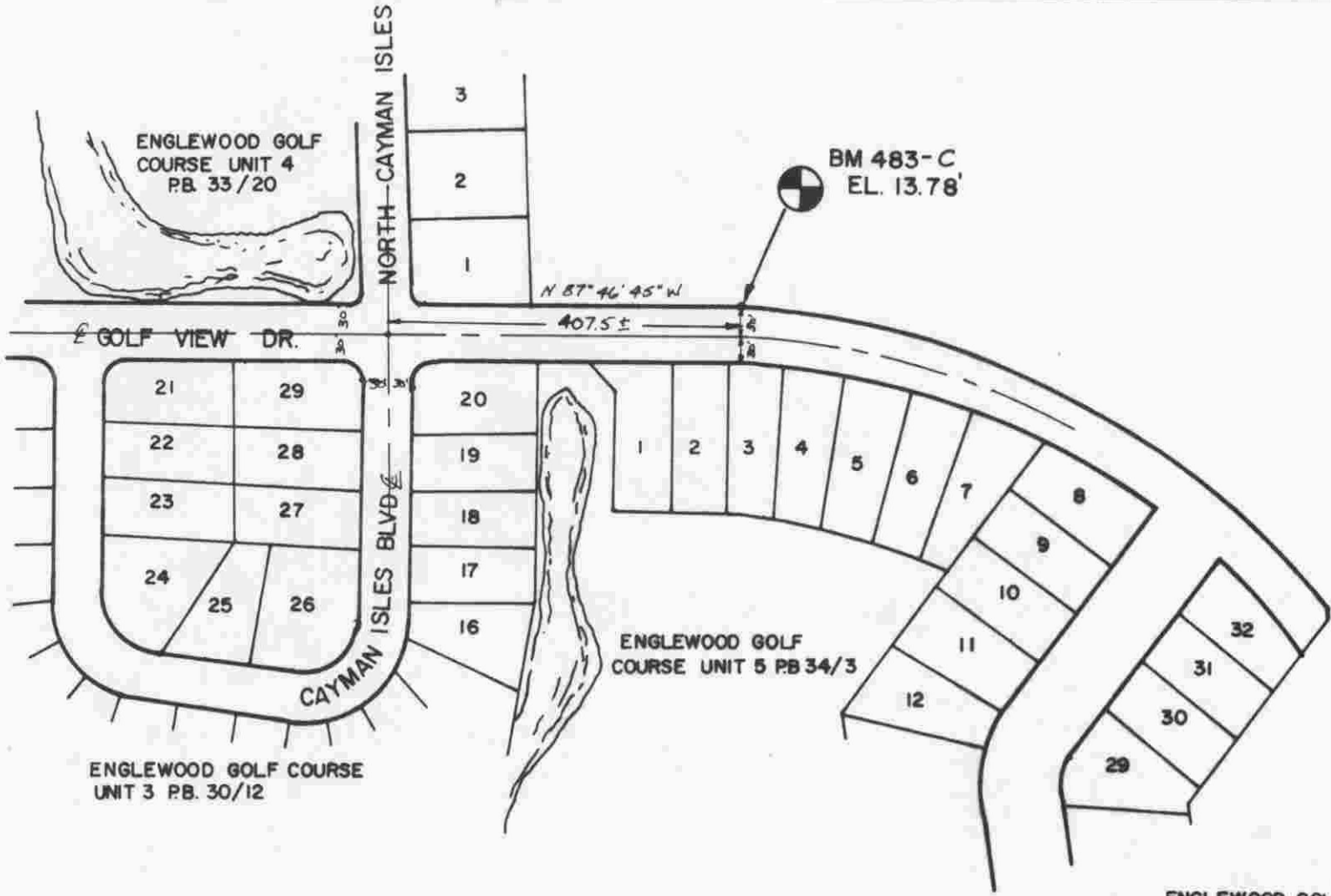
DATE DRAWN: JULY 17, 1989 BY: KLP

SET BY: BRITT & ASSOCIATES

ELEV. BASED ON DNR TBM 5809 SAR 16

DATE	TYPE	FB. PG.	BY
------	------	---------	----

REVISIONS



ENGLEWOOD GOLF COURSE UNIT 5 PB. 34/3

SARASOTA COUNTY
TRANSPORTATION DEPARTMENT
ENGINEERING DIVISION

**BENCH MARK
DATA SHEET**

ELEV.

13.78'

BM. NO.

483-C

DATE DRAWN: MAR. 22, 1990 BY: KLP

SET BY: BRITT & ASSOCIATES

ELEV. BASED ON DNR T.B.M. 5809 SAR 16

DATE	TYPE	FB. PG.	BY
REVISIONS			