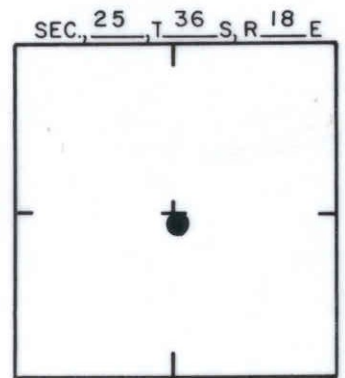
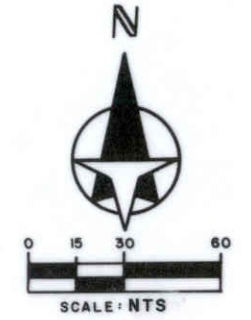
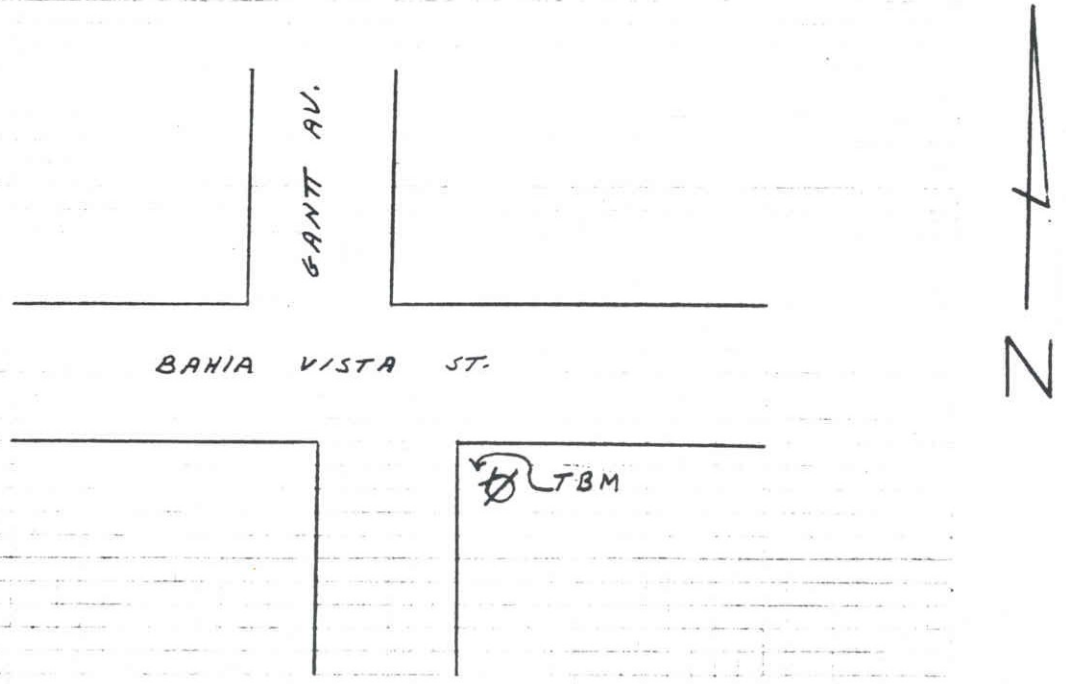


SARASOTA COUNTY
TRANSPORTATION DEPARTMENT
ENGINEERING DIVISION

BENCH MARK DATA SHEET		ELEV.
		28.19
DATE DRAWN: 4-10-86 BY: W.F.W.		BM. NO.
REF: F.B. 264 PG. 33 DATE II-26-85		49-B
ELEV. BASED ON B.M. NO. R-49		

DATE	TYPE	F.B. PG.	BY
REVISIONS			

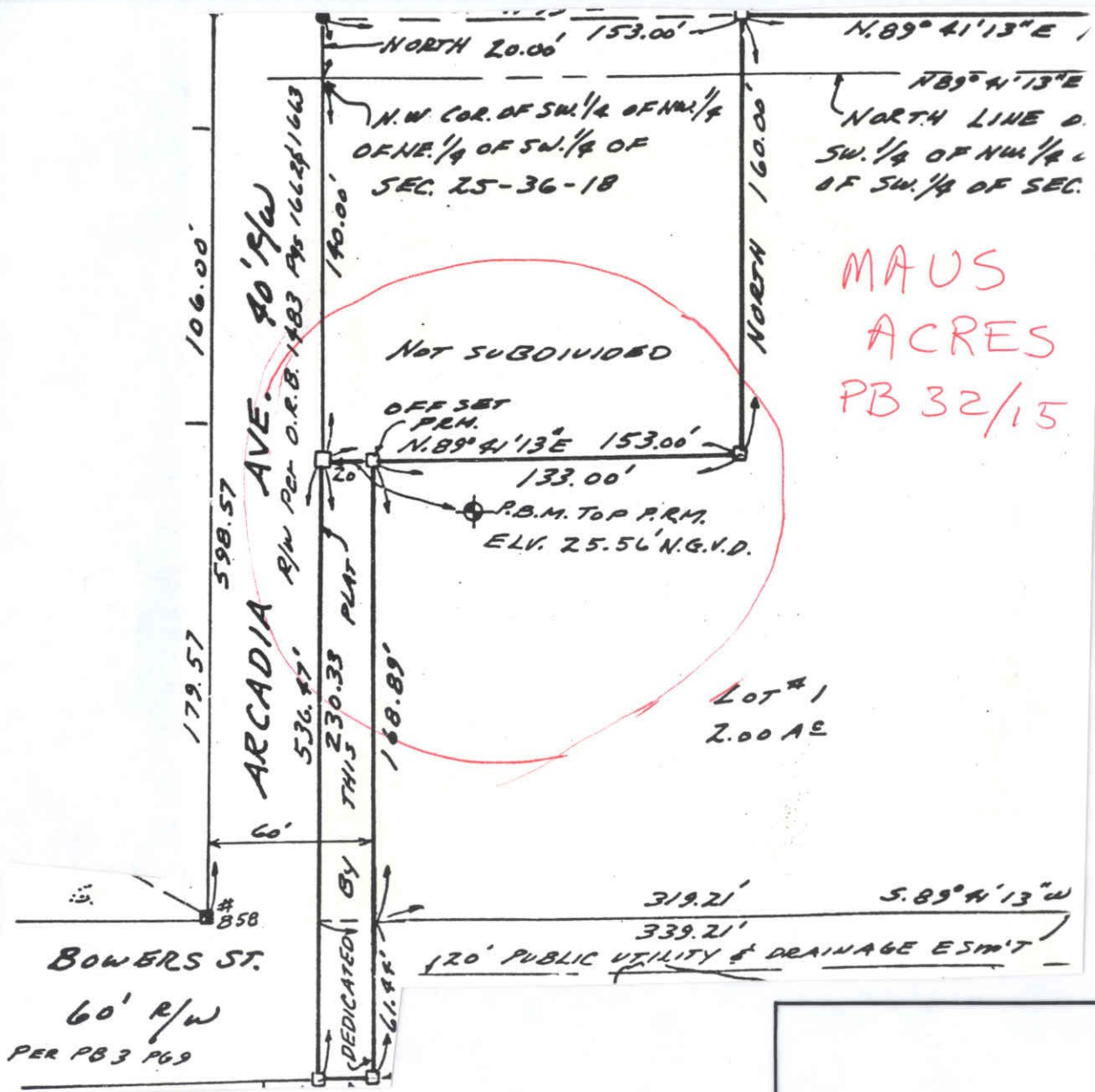
TO REACH THE MARK FROM INTER. GANTT AV. & BAHIA VISTA ST.
 TBM IS A RAILROAD SPIKE N.W. SIDE OF P-POLE



LOCATION SKETCH
 N.T.S.

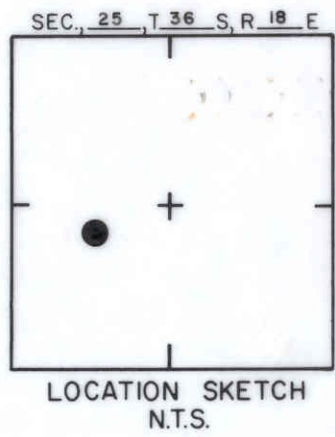
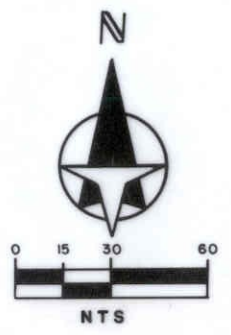
SARASOTA COUNTY
 TRANSPORTATION DEPARTMENT
 ENGINEERING DIVISION

				BENCH MARK DATA SHEET		ELEV.
						34.23
REVISIONS				DATE DRAWN: 1-27-87	BY: RJJ	BM. NO.
				DATE	TYPE	F.B. PG.
				ELEV. BASED ON B.M. NO. N O S		



MAUS
ACRES
PB 32/15

LOT #1
2.00 AC



SARASOTA COUNTY
TRANSPORTATION DEPARTMENT
ENGINEERING DIVISION

**BENCH MARK
DATA SHEET**

ELEV.

25.56'

BM. NO.

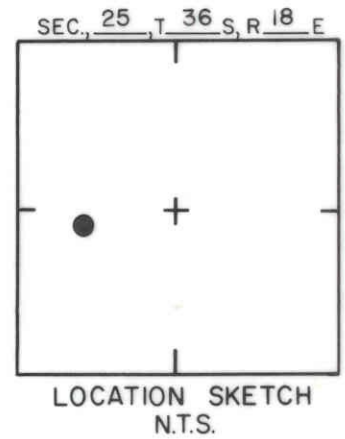
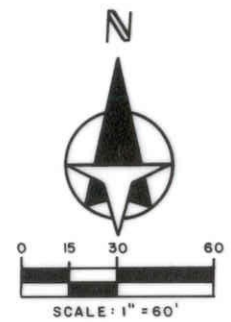
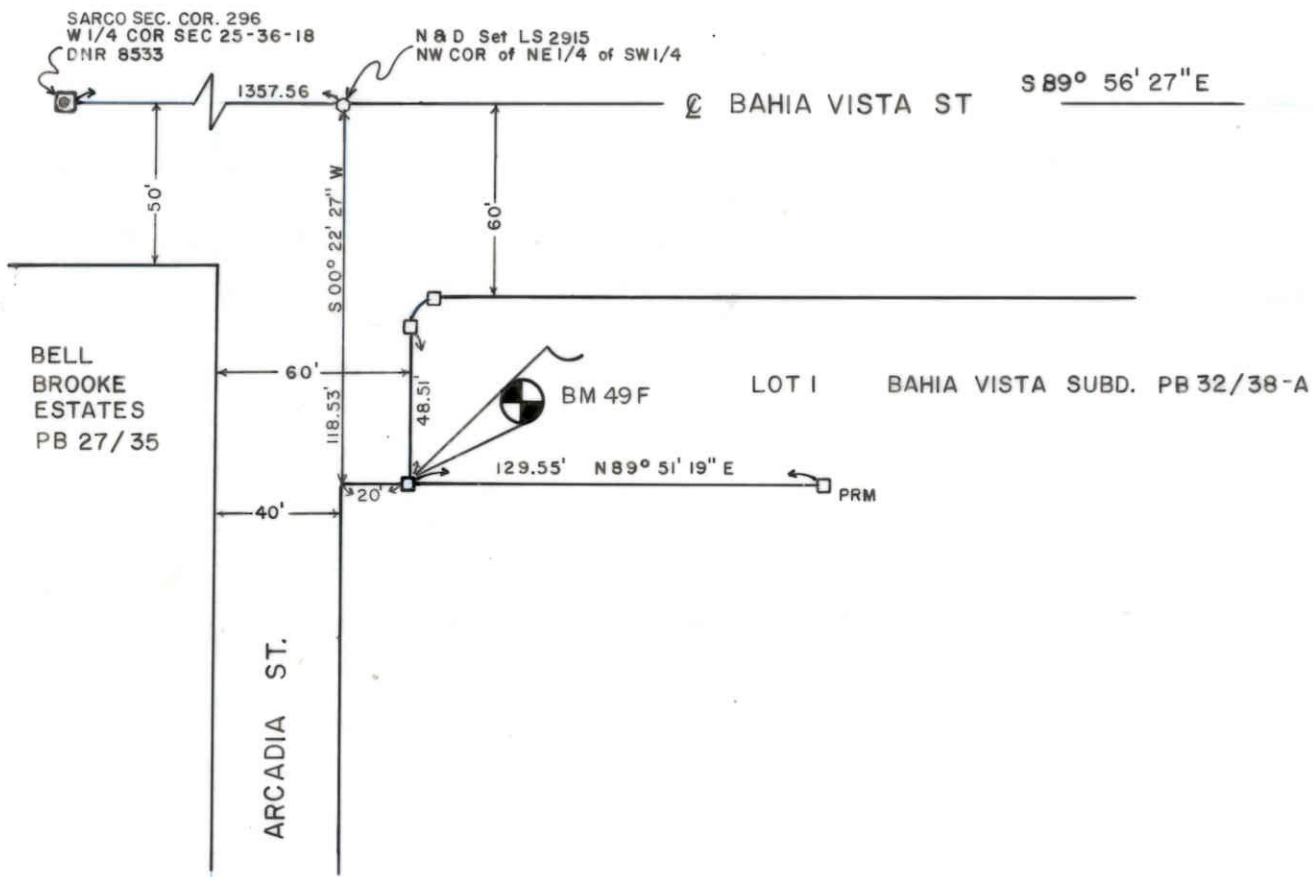
49E

DATE DRAWN: 11/23/87 BY: PAR

REF: F.B. PG. DATE

ELEV. BASED ON B.M. NO. 48 (SAR CO)

DATE	TYPE	F.B. PG.	BY
REVISIONS			

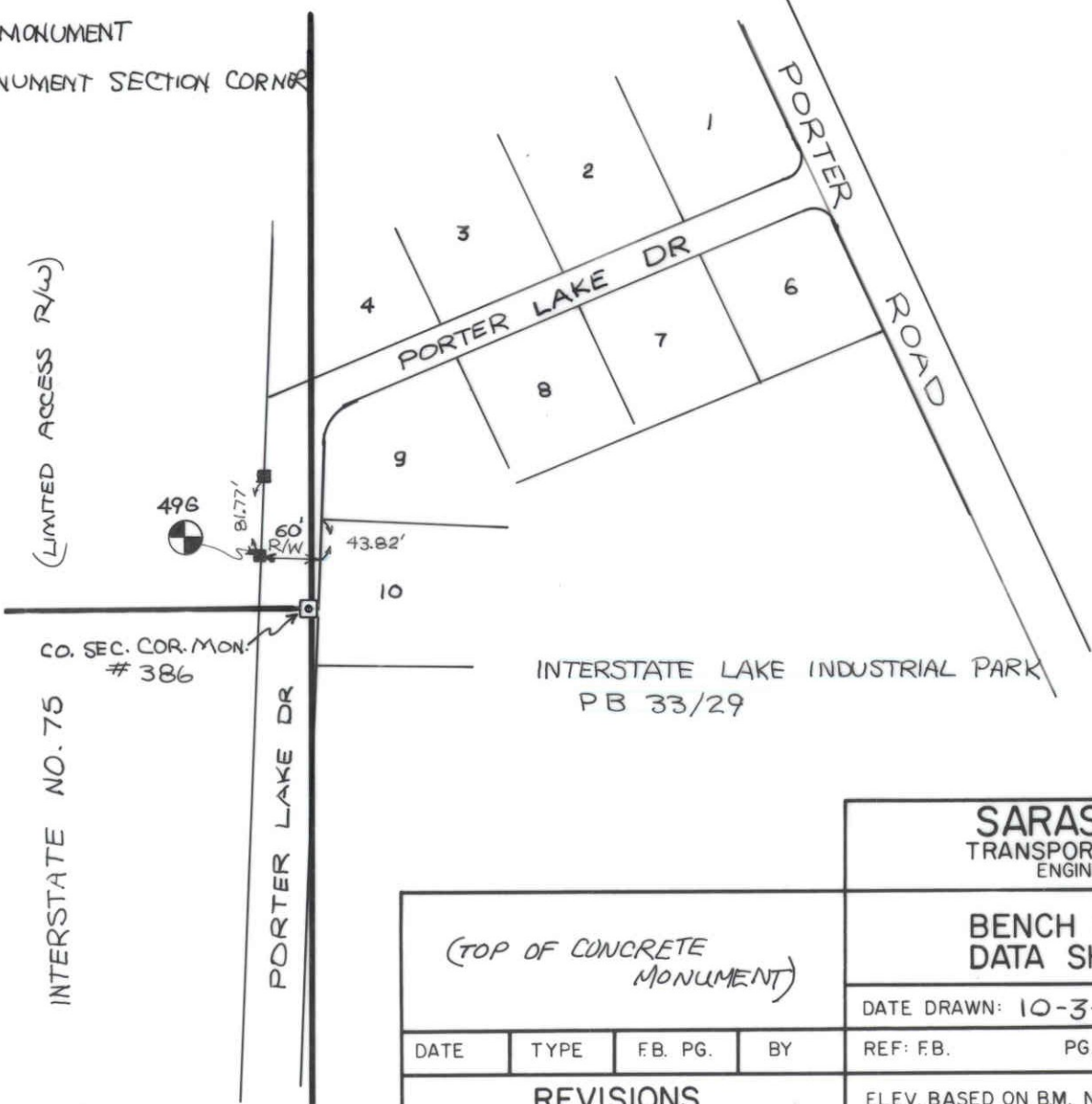
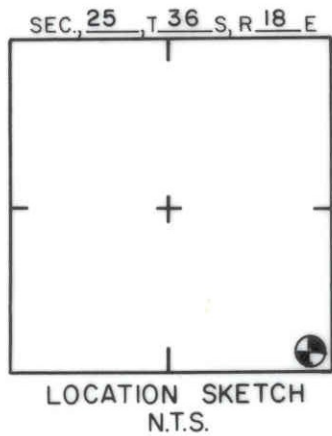
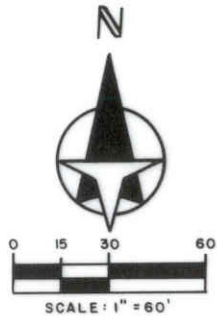


SARASOTA COUNTY TRANSPORTATION DEPARTMENT ENGINEERING DIVISION			
BENCH MARK DATA SHEET			ELEV. 31.56'
DATE DRAWN: 9/7/88		BY: SCB	
REF: FB.	PG.	DATE	
ELEV. BASED ON B.M. NO. SARCO 48			BM. NO. 49 F

REVISIONS			
DATE	TYPE	F.B. PG.	BY

LEGEND

- CONCRETE MONUMENT
- ⊠ SARCO MONUMENT SECTION CORNER



CO. SEC. COR. MON. # 386

INTERSTATE NO. 75

PORTER LAKE DR

SARASOTA COUNTY
TRANSPORTATION DEPARTMENT
ENGINEERING DIVISION

(TOP OF CONCRETE MONUMENT)				BENCH MARK DATA SHEET			ELEV.
							27.07
REVISIONS				DATE DRAWN: 10-3-89 BY: SCB			BM. NO.
				ELEV. BASED ON BM. NO. SARCO 238			496
DATE	TYPE	F.B. PG.	BY	REF: F.B.	PG.	DATE	