

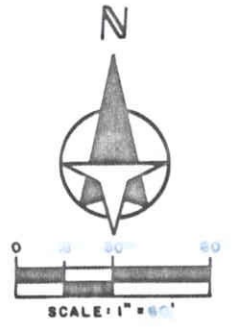
1/4 SEC. 27, T. 36S, R. 18E

36" W 332.46

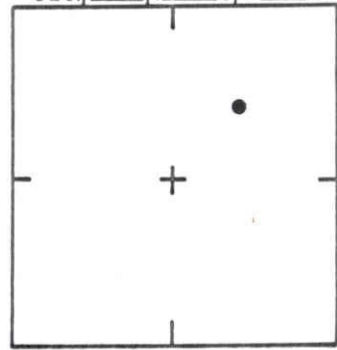
BENCH MARK ELEV. 14.81
TOP OF CONC. MON.

P.O.B.

N.W. CORNER OF S.E. 1/4, N.E. 1/4
SEC. 27, T. 36S, R. 18E



SEC. 27, T. 36 S, R. 18 E



LOCATION SKETCH
N.T.S.

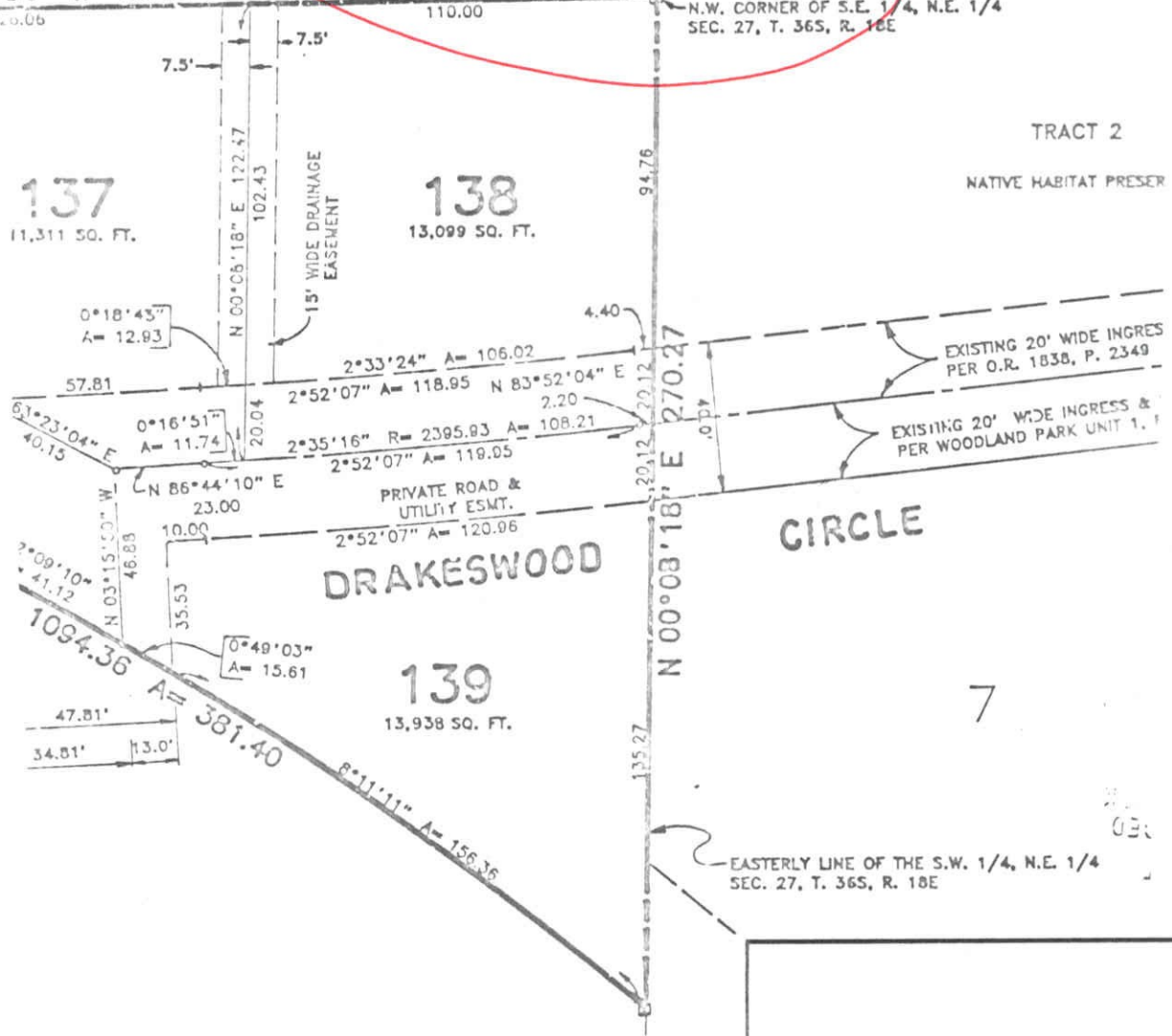
TRACT 2

NATIVE HABITAT PRESER

137
11,311 SQ. FT.

138
13,099 SQ. FT.

139
13,938 SQ. FT.



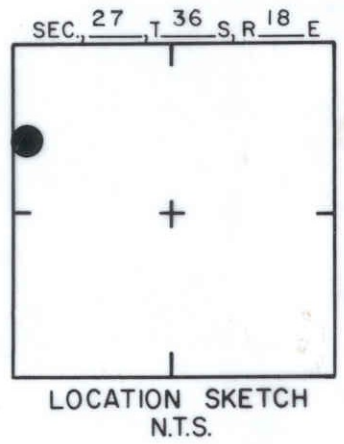
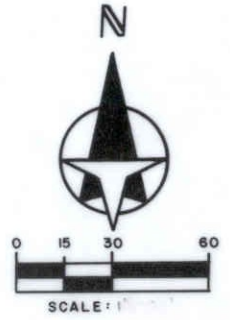
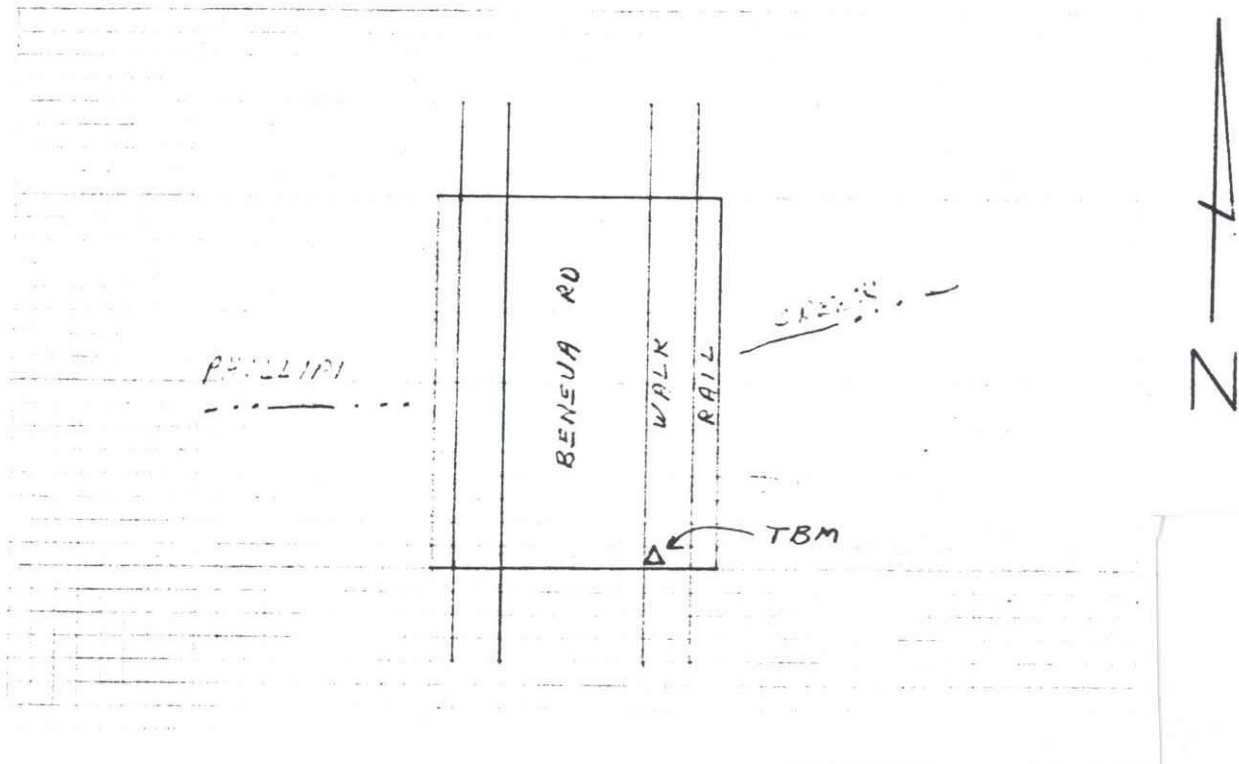
CIRCLE

EASTERLY LINE OF THE S.W. 1/4, N.E. 1/4
SEC. 27, T. 36S, R. 18E

SARASOTA COUNTY
TRANSPORTATION DEPARTMENT
ENGINEERING DIVISION

				BENCH MARK DATA SHEET		ELEV.
						14.81'
REVISIONS				DATE DRAWN: P.J.B. 6-6-86 BY: P.J.B		BM. NO.
				REF: PB. 31 PG. 10 DATE 5-19-86		52 D
				ELEV. BASED ON B.M. NO. NOS. K 252		

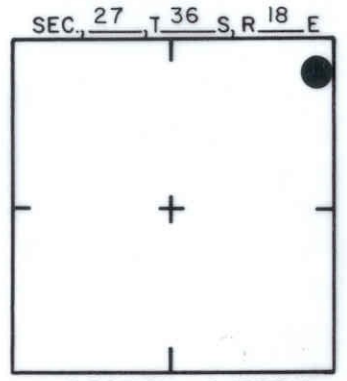
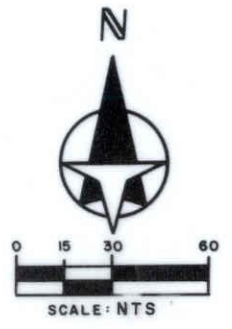
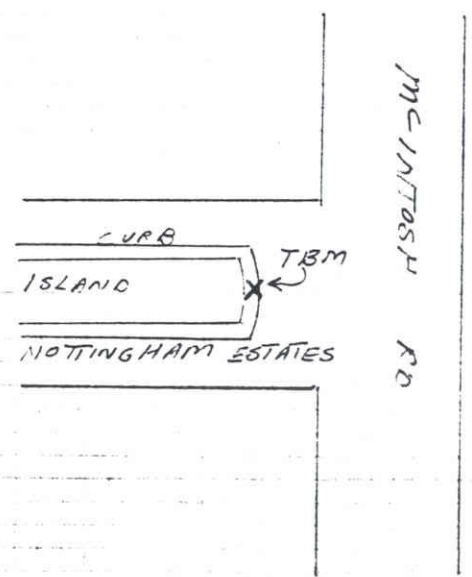
TO REACH THE MARK FROM AT N. BENEVA RD & PHILLIPI CREEK;
 TBM IS STANDARD D.O.T. BRASS DICH SET IN CONC
 WALK IN S.E. COR BRIDGE.



SARASOTA COUNTY
 TRANSPORTATION DEPARTMENT
 ENGINEERING DIVISION

				BENCH MARK DATA SHEET		ELEV.
						18.295
8/7/87 EL WAS 18.31 PER NOS & 18.34 PER DOT RWJ				DATE DRAWN: 1-20-87	BY: RJJ	BM. NO.
DATE	TYPE	F.B. PG.	BY	REF: SWFWMD H FH 103	DATE 9/81	52E
REVISIONS				ELEV. BASED ON BM. NO. NO S		

TO REACH THE MARK FROM AT MCINTOSH RD & ENTRANCE TO NOTTINGHAM ESTATES: TBM IS CHISELED SQUARE ON E. END OF CONC ISLAND CURB



LOCATION SKETCH
N.T.S.

SARASOTA COUNTY
TRANSPORTATION DEPARTMENT
ENGINEERING DIVISION

**BENCH MARK
DATA SHEET**

ELEV.

19.13'

BM. NO.

52F

DATE DRAWN: 1-22-87 BY: R J J

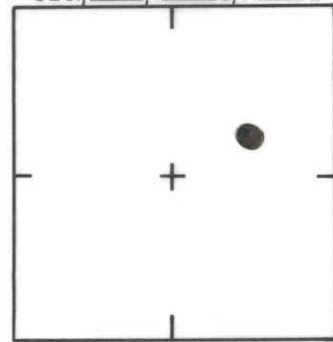
REF: SWFWMD HFH 119 DATE 9/81

ELEV. BASED ON BM. NO. NOS

DATE	TYPE	F.B. PG.	BY
REVISIONS			



SEC. 27 T. 36 S. R. 18 E



LOCATION SKETCH
N.T.S.

CO. DRAINAGE R/W
BM 52-I

BAHIA VISTA COURT SUB.
PB 32/39

PB 32/39

TARA VISTA DRIVE

BAHIA VISTA COURT (PRI.)

BAHIA VISTA ST.

SARASOTA COUNTY
TRANSPORTATION DEPARTMENT
ENGINEERING DIVISION

BENCH MARK
DATA SHEET

ELEV.

13.82'

BM. NO.

52-I

DATE DRAWN: 9-13-88 BY: RJJ

REF: F.B. PG. DATE

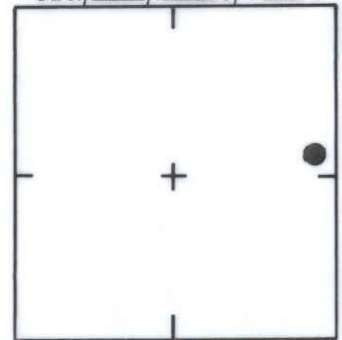
ELEV. BASED ON B.M. NO. NGVD NOS K 252

DATE	TYPE	F.B. PG.	BY
REVISIONS			

PHILLIPPI CREEK, BRANCH A-A
 75' SARASOTA COUNTY DRAINAGE R/W, O.R. BK. 1316, PAGES 479 & 480
 COUNTY DRAINAGE DITCH NO. 4-89



SEC. 27, T. 36 S, R. 18 E



LOCATION SKETCH
N.T.S.

SARASOTA COUNTY
 TRANSPORTATION DEPARTMENT
 ENGINEERING DIVISION

BENCH MARK
 DATA SHEET

ELEV.

12.30'

DATE DRAWN: 12-14-88 BY: BAG

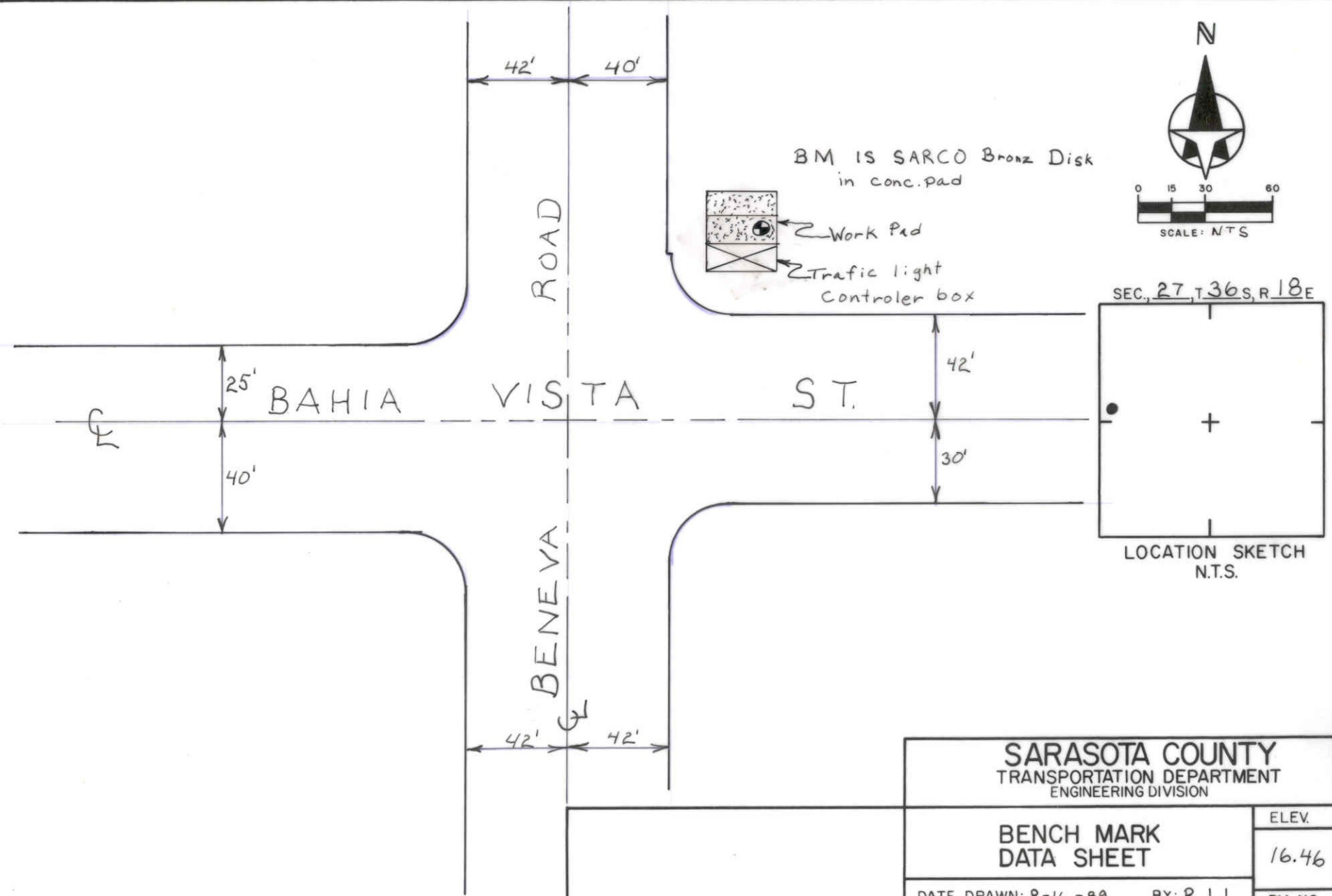
BM. NO.

REF: P.B. 32 PG. 47 DATE

52 J

DATE	TYPE	FB. PG.	BY
REVISIONS			

ELEV. BASED ON B.M. NO.



SARASOTA COUNTY
 TRANSPORTATION DEPARTMENT
 ENGINEERING DIVISION

BENCH MARK DATA SHEET		ELEV.
		16.46
DATE DRAWN: 8-16-89 BY: RJJ		BM. NO.
REF: FB. 265 PG. 77 DATE 8-9-89		52L
ELEV. BASED ON B.M. NO. 8M 53E		

DATE	TYPE	FB. PG.	BY
REVISIONS			

BAHIA VISTA MENNONITE CHURCH

SIDEWALK

DRIVE

PARKING

PARKING

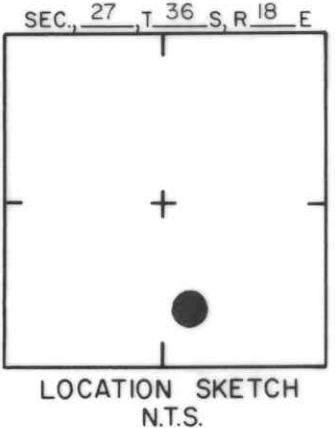
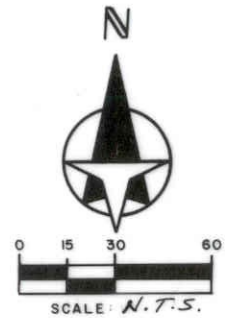
PARKING

DRIVE

PARKING

BAHIA VISTA

T.B.M. SQ. CUT ON N. END OF THE FIRST CONC. MEDIAN S. OF CHURCH ELEV. 17.873'



SARASOTA COUNTY
TRANSPORTATION DEPARTMENT
ENGINEERING DIVISION

BENCH MARK
DATA SHEET

ELEV.

17.873'

BM. NO.

52 M

DATE DRAWN: AUG. 1, 1990 BY: KLP

REF: F.B. 318 PG. 66 DATE 6-20-90

ELEV. BASED ON BM. NO. 53 P

DATE	TYPE	F.B. PG.	BY
------	------	----------	----

REVISIONS