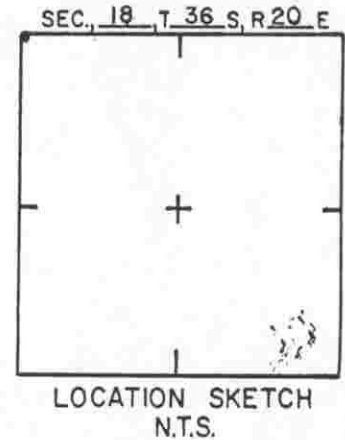
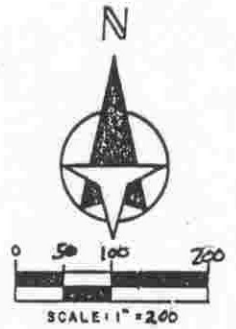
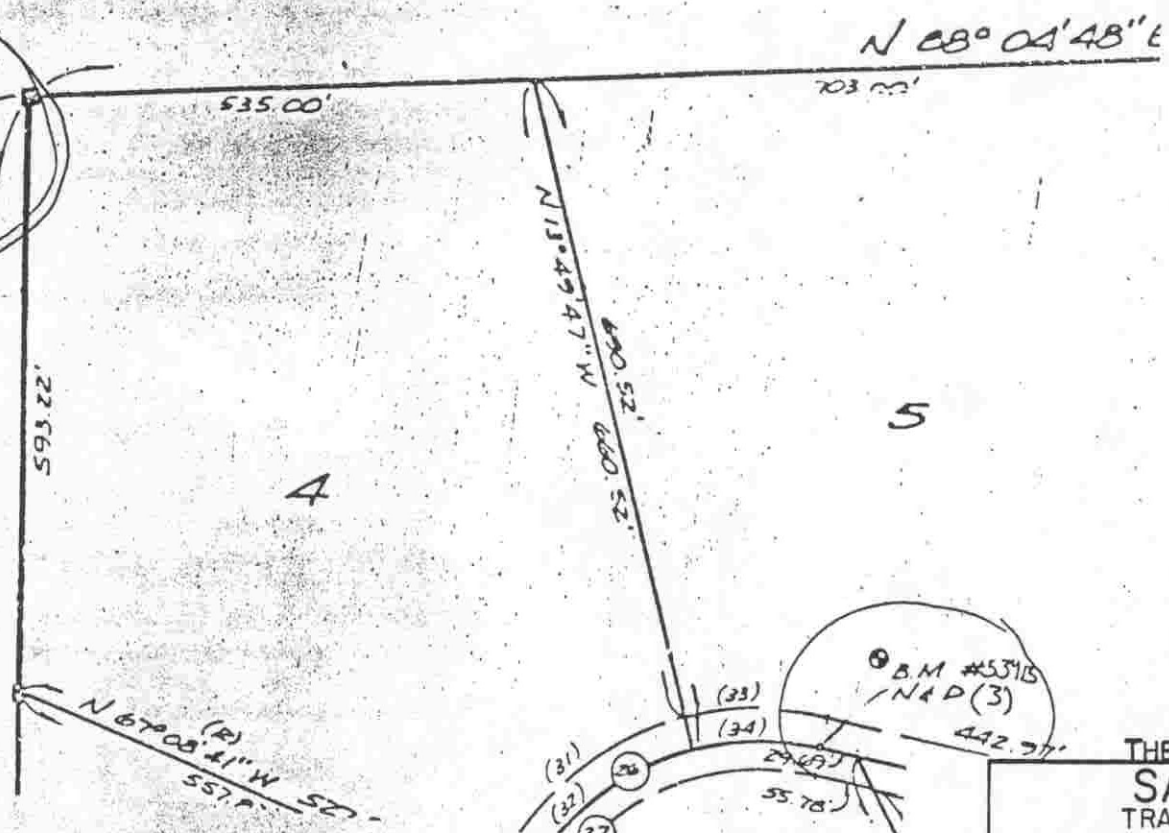


THE RANCHES AT BERN CREEK

IN SECTION 18, TWP. 36 S., RGE. 20 E.
SARASOTA COUNTY, FLORIDA.



NW CORNER
SEC 18-36-20
B.M. #539 TOP C.M.
EL. 49.72' (1)
D.N.R. DOC. # 20383



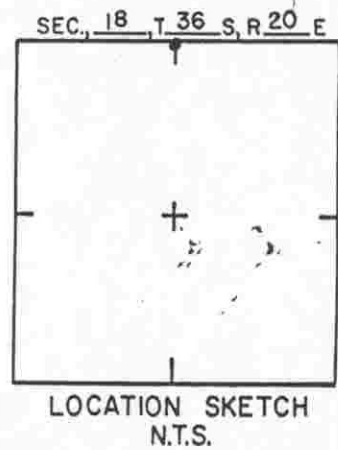
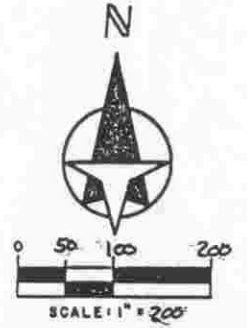
THE RANCHES AT BERN CREEK
SARASOTA COUNTY
TRANSPORTATION DEPARTMENT
ENGINEERING DIVISION

				BENCH MARK DATA SHEET		ELEV.
						49.72'
REVISIONS				DATE DRAWN: 8/85 BY: PJB		BM. NO.
				REF: OR. 1793 PG. 2089 DATE 8/85		539 (1)
				ELEV. BASED ON B.M. NO. J-93		

4.)

50' 473.00' 473.55'

⊙ NORTH 1/4 CORNER
SEC. 18-36-20
B.M. # 539A (2)
4" X 4" CONC. IRON
MARKED: $\frac{17}{18}$ WITH
APPLIED FOR D.N.U.

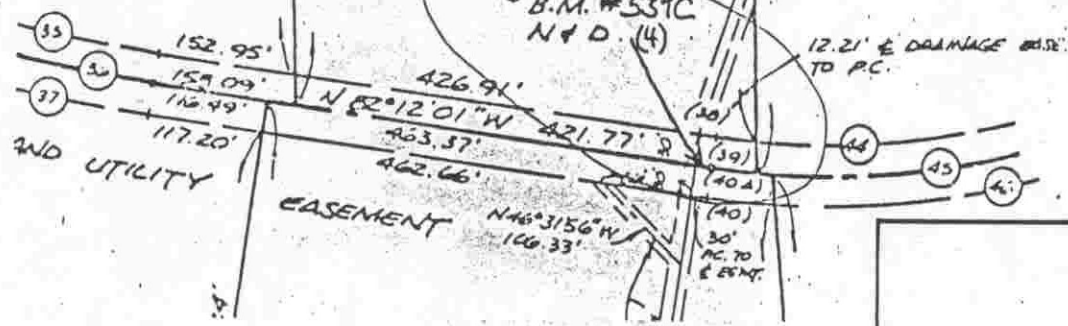


N 01°55'12" W 800.35'
910.79'
7
S 01°55'12" E 959.61'
959.77'

EAST LINE N.W. 1/4
SEC. 18-36-20

NORTH

BEEK LOOP



THE RANCHES AT BERN CREEK
SARASOTA COUNTY
TRANSPORTATION DEPARTMENT
ENGINEERING DIVISION

BENCH MARK
DATA SHEET

ELEV.

48.71'

BM. NO.

DATE DRAWN: 8/85 BY: PJB

REF: O.R. 1793 PG. 2089 DATE 8/85

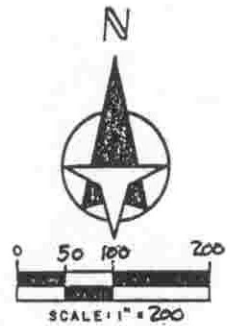
ELEV. BASED ON B.M. NO. J-93

539A (2)

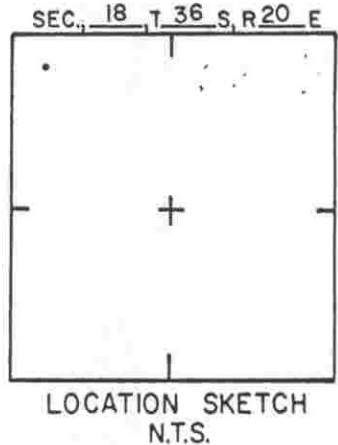
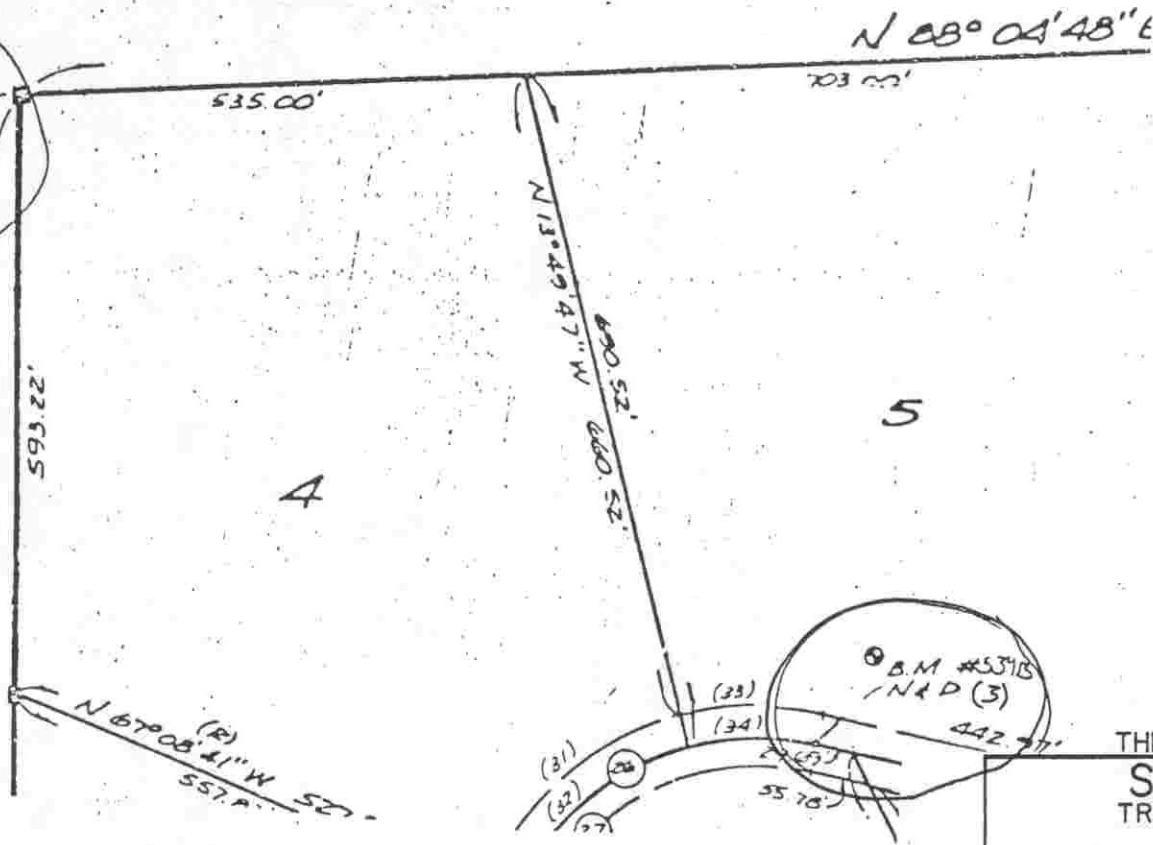
DATE	TYPE	FB. PG.	BY
REVISIONS			

THE RANCHES AT BERN CREEK

IN SECTION 18, TWP. 36 S., RGE. 20 E.
SARASOTA COUNTY, FLORIDA.



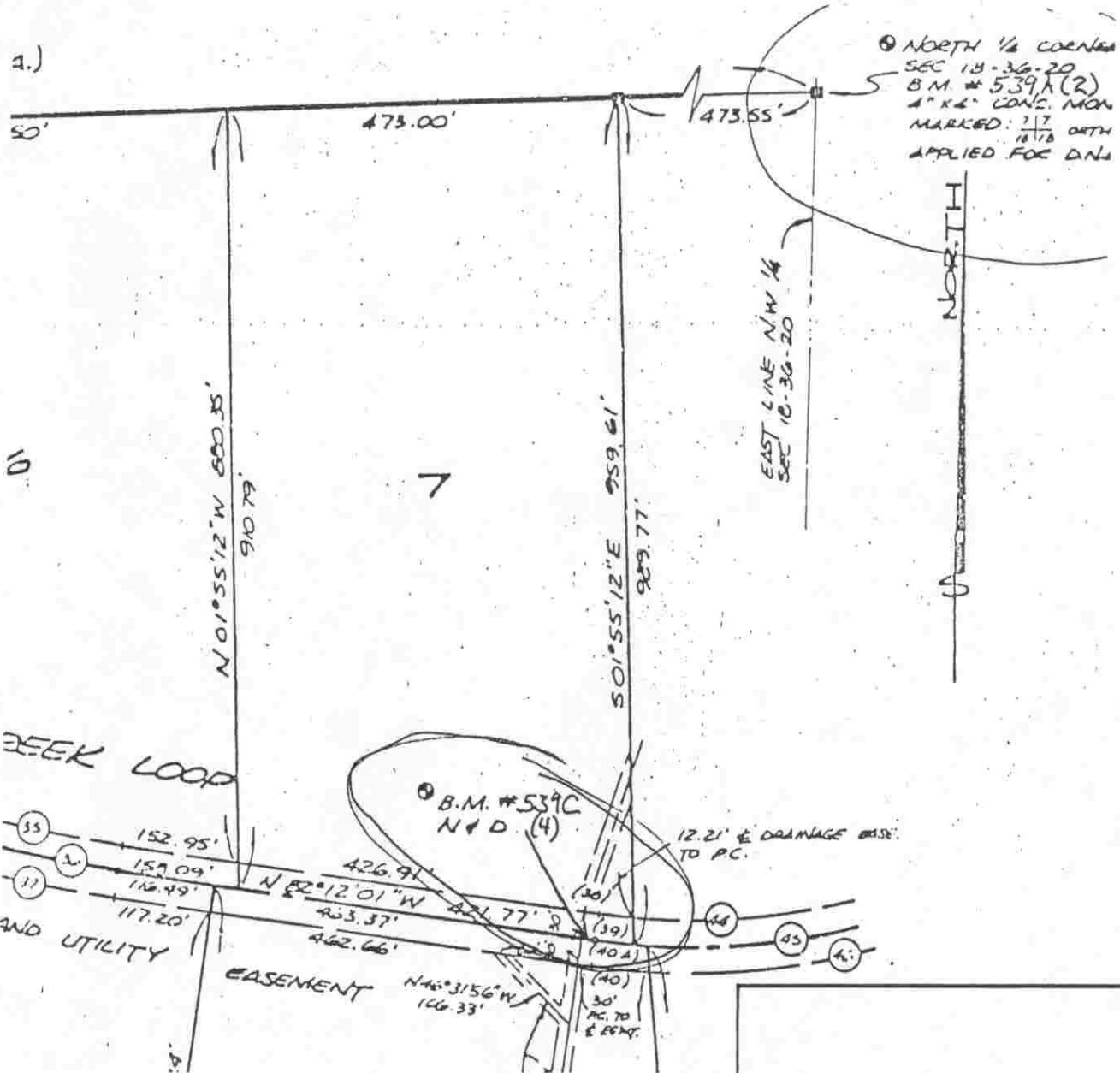
NW CORNER
SEC 18-36-20
B.M. #5397 C.M.
EL. 49.72' (1)
D.N.R. DOC # 20383



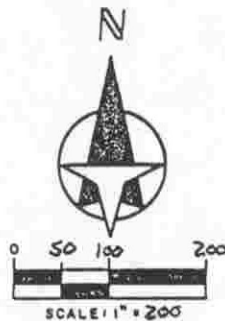
THE RANCHES AT BERN CREEK
SARASOTA COUNTY
TRANSPORTATION DEPARTMENT
ENGINEERING DIVISION

				BENCH MARK DATA SHEET		ELEV.
						49.40'
REVISIONS				DATE DRAWN: 8/85	BY: PJB	BM. NO.
				REF: D.R. 1793 PG. 2089 DATE 8/85		
				ELEV. BASED ON B.M. NO. J-93		

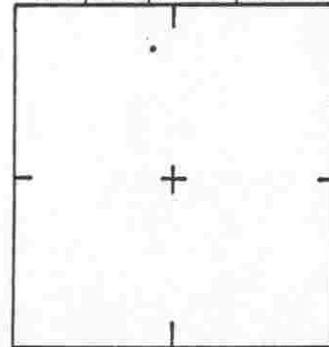
a.)



⊙ NORTH 1/4 CORNER
 SEC 18-36-20
 B.M. # 539A(2)
 4" X 4" CONC. MON
 MARKED: 7/7 18/78 ORTH
 APPLIED FOR D.M.

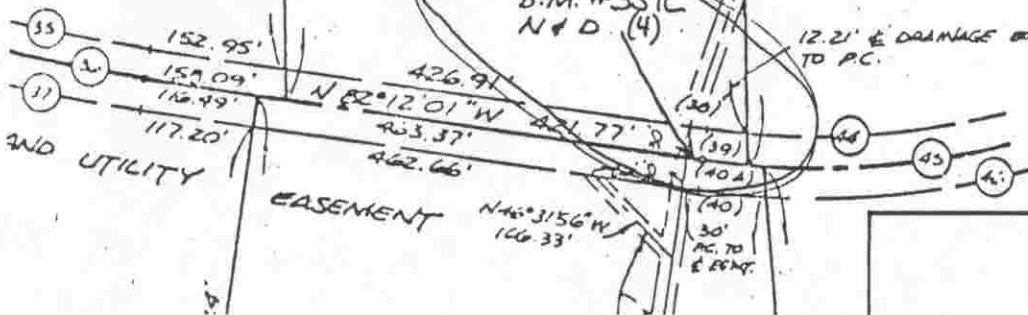


SEC. 18 T. 36 S. R. 20 E



LOCATION SKETCH
 N.T.S.

DEEK LOOP

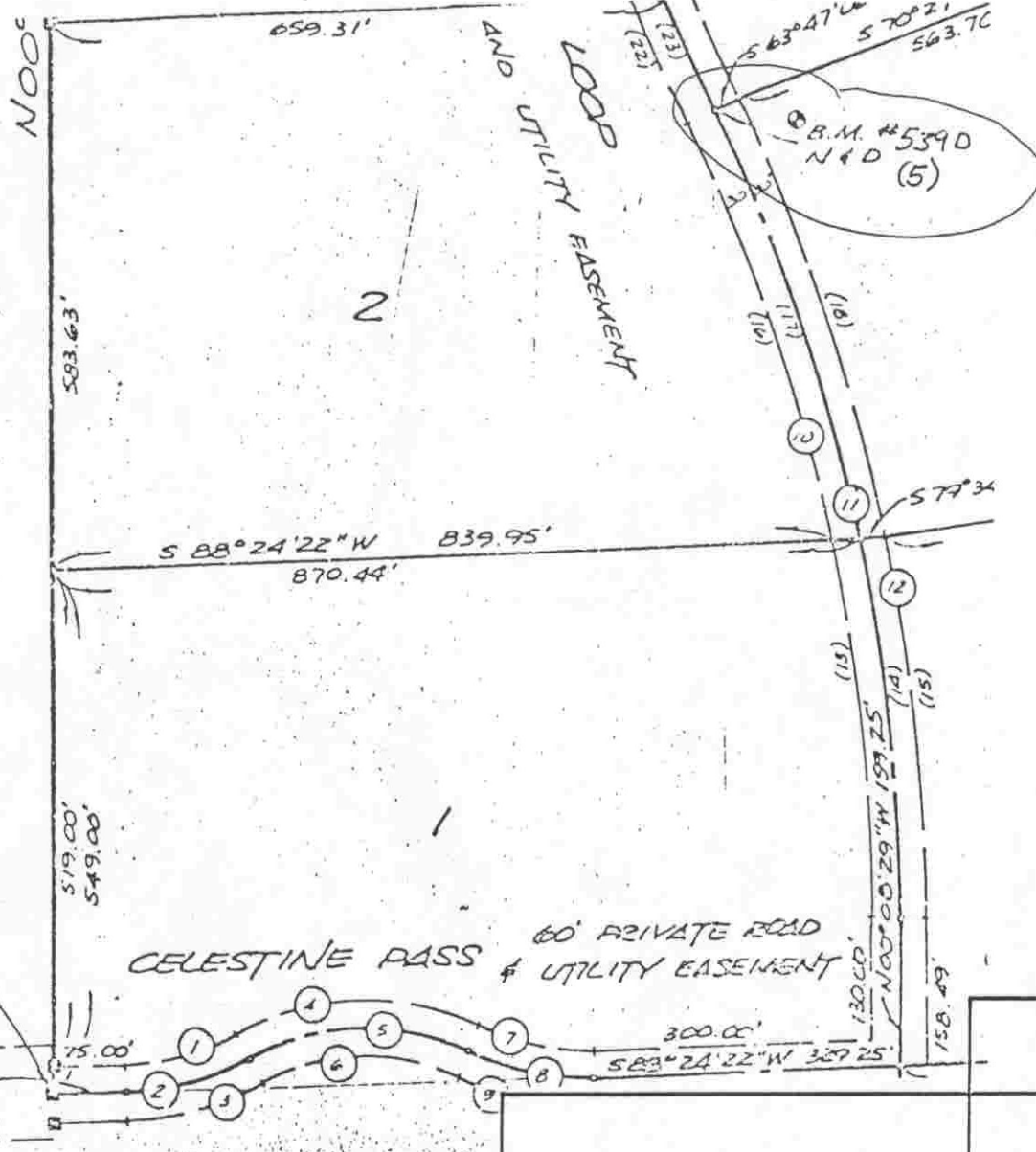


THE RANCHES AT BERN CREEK
 SARASOTA COUNTY
 TRANSPORTATION DEPARTMENT
 ENGINEERING DIVISION

BENCH MARK DATA SHEET	ELEV.
	48.91
DATE DRAWN: 8/85	BY: PJB
REF: O.R. 1793 PG. 2089 DATE 8/85	BM. NO.
ELEV. BASED ON B.M. NO. J-93	539C(4)

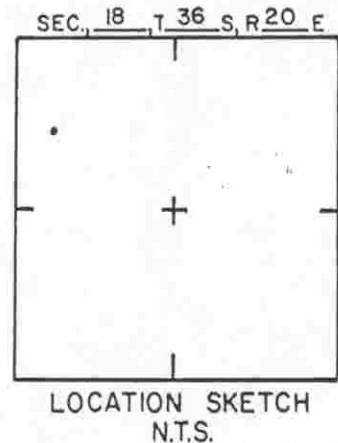
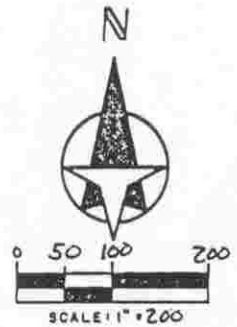
DATE	TYPE	FB. PG.	BY
REVISIONS			

SEC. 13



WEST 1/2 CORNER
 SEC 13-36-20
 B.M. # 539 F (1)
 N+D
 APPLIED FOR D.N.E.
 4/28 5-30-85

SEE SHEET 4 OF 5 FOR
 INGRESS/EGRESS TO FRUITVILLE ROAD



THE RANCHES AT BERN CREEK
SARASOTA COUNTY
 TRANSPORTATION DEPARTMENT
 ENGINEERING DIVISION

**BENCH MARK
 DATA SHEET**

ELEV.

47.86'

BM. NO.

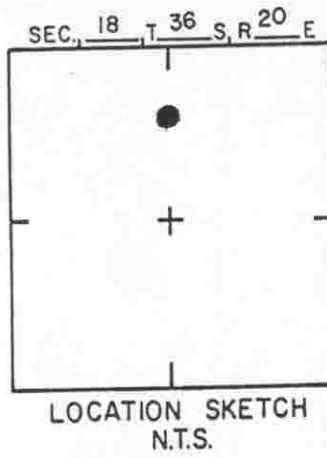
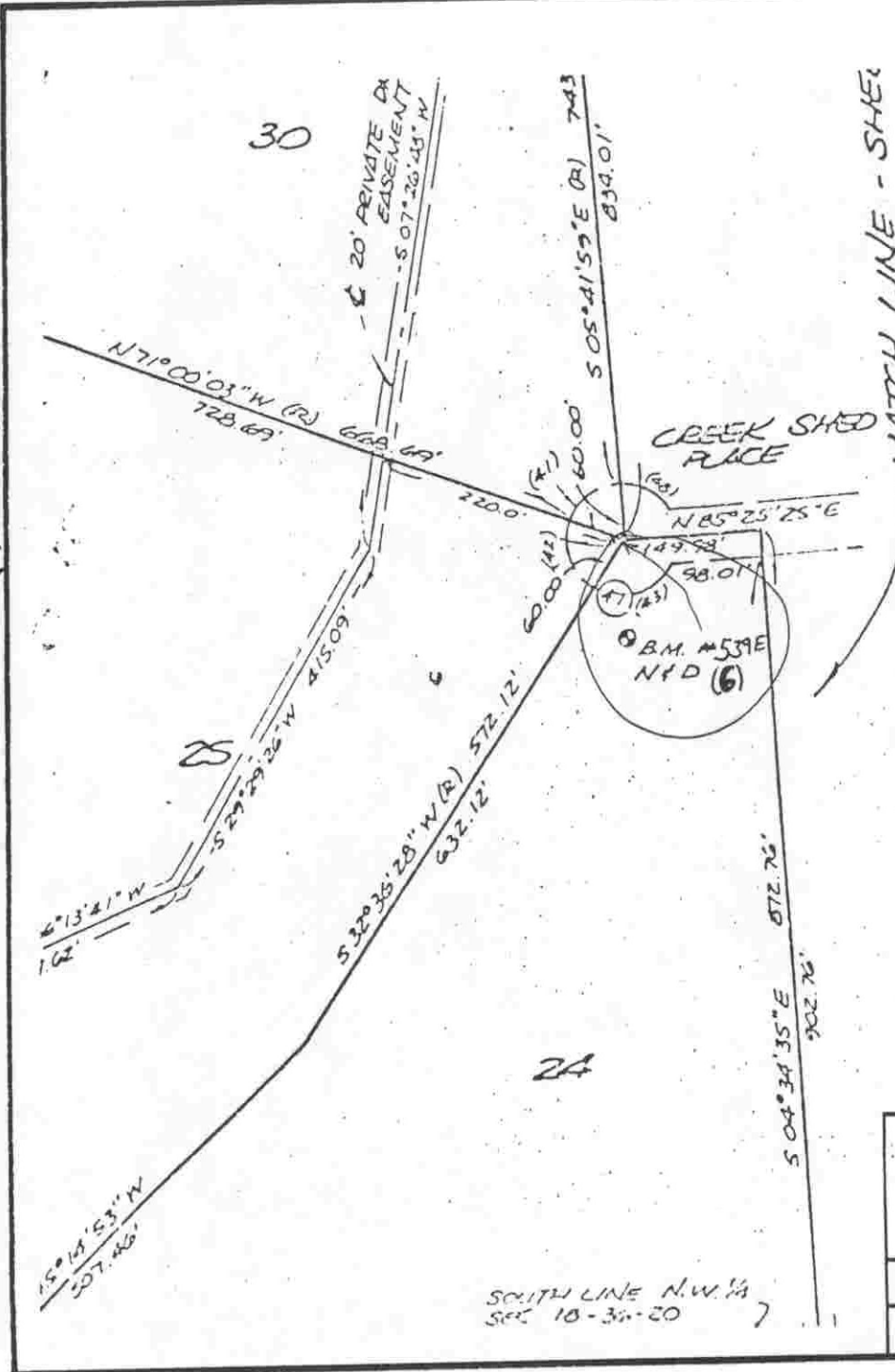
539D (5)

DATE DRAWN: 8/85 BY: PJB
 REF: O.R. 1793 PG. 2089 DATE 8/85

ELEV. BASED ON B.M. NO. J-93

DATE	TYPE	FB. PG.	BY
------	------	---------	----

REVISIONS



THE RANCHES AT BERN CREEK
 SARASOTA COUNTY
 TRANSPORTATION DEPARTMENT
 ENGINEERING DIVISION

BENCH MARK DATA SHEET		ELEV.
		48.07'
DATE DRAWN: 8/85		BY: PJB
REF: O.R. 1793		PG. 2089 DATE 8/85
ELEV. BASED ON B.M. NO. J-93		539E (6)

DATE	TYPE	F.B. PG.	BY
REVISIONS			

SOUTH LINE N.W. 1/4
 SEC. 18 - 36 - 20

SEC. 19

1000'

583.63'

519.00'
549.00'

659.31'

S 88° 24' 22" W 839.95'
870.44'

S 88° 24' 22" W 75.76'

LOOP AND UTILITY EASEMENT

CELESTINE PASS 60' PRIVATE ROAD & UTILITY EASEMENT

S 63° 47' W 570.21'
563.76'
B.M. #539D N+D (5)

(10) (11) (12)

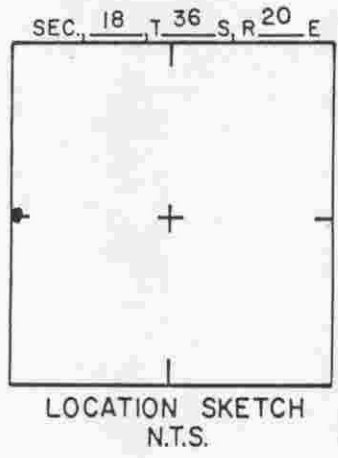
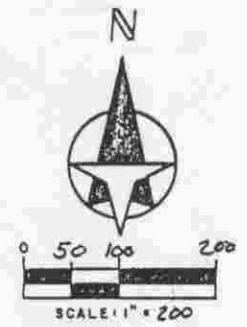
(13) (14) (15)

300.00'
S 88° 24' 22" W 307.25'

130.00'
N 00° 00' 29" W 197.25'

NOT ST 1/2 CLEARED
DATE 10-20-20
D.M. # 539F(7)
N+D
APPLICABLE FOR D.N.R.
DATE 5-30-85

SEE SHEET 4 OF 5 FOR
INGRESS - EGRESS TO FRUITVILLE ROAD



THE RANCHES AT BERN CREEK
SARASOTA COUNTY
TRANSPORTATION DEPARTMENT
ENGINEERING DIVISION

BENCH MARK
DATA SHEET

ELEV.

45.83'

DATE DRAWN: 8/85 BY: PJB

BM. NO.

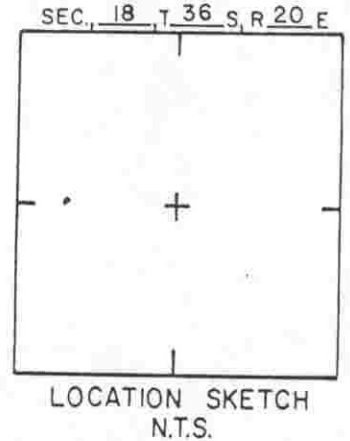
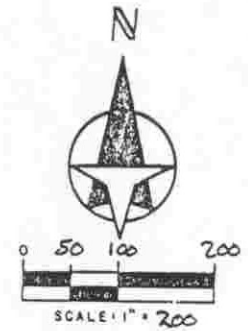
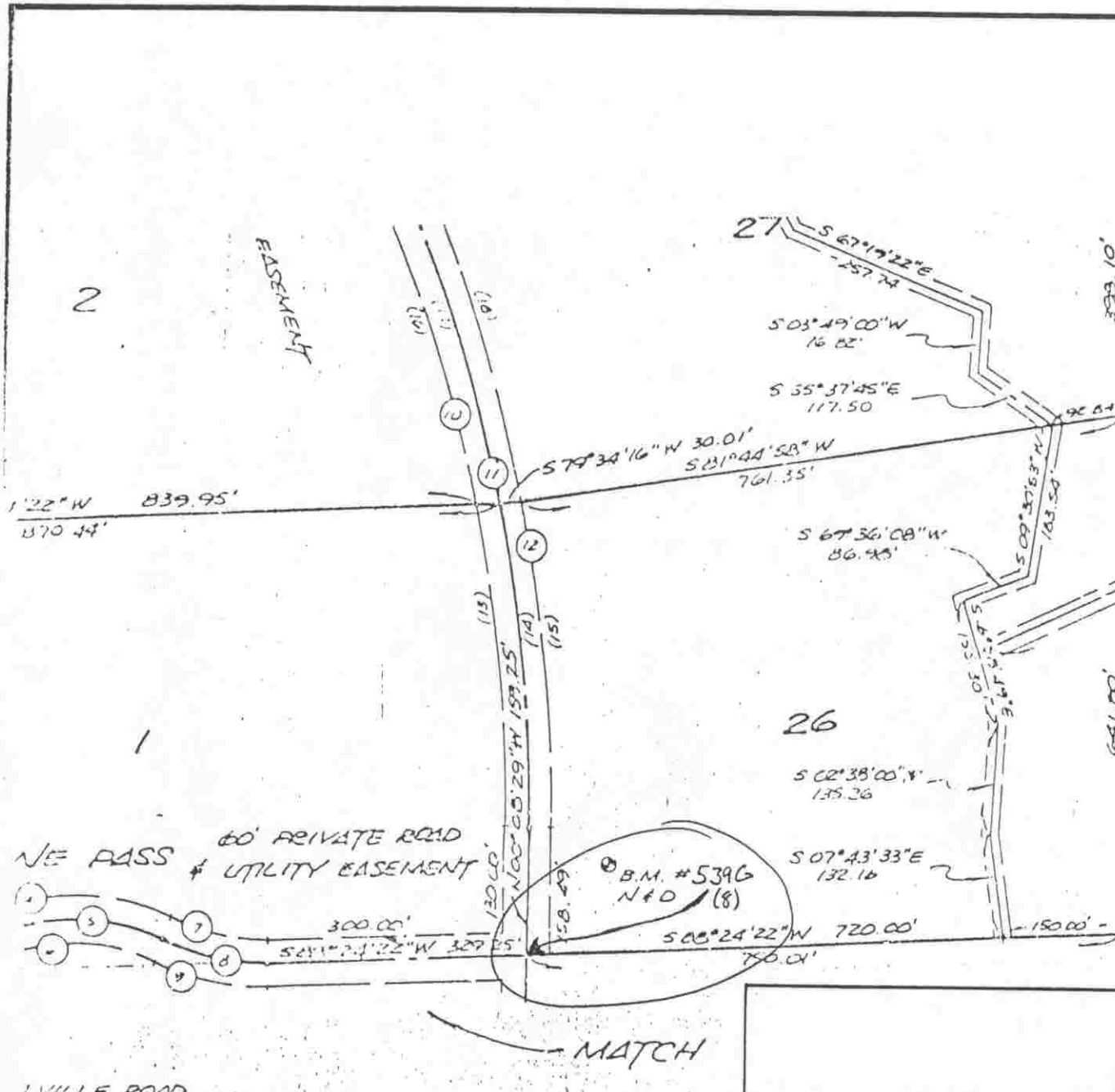
REF: O.R. 1793 PG. 2089 DATE 8/85

539F(7)

ELEV. BASED ON B.M. NO. J-93

DATE	TYPE	FB. PG.	BY
------	------	---------	----

REVISIONS



THE RANCHES AT BERN CREEK
SARASOTA COUNTY
TRANSPORTATION DEPARTMENT
ENGINEERING DIVISION

BENCH MARK
DATA SHEET

ELEV.

45.66'

BM. NO.

539G (8)

DATE DRAWN: 8/85 BY: PJB
REF: O.R. 1793 PG. 2089 DATE 8/85
ELEV. BASED ON B.M. NO. J-93

DATE	TYPE	FB. PG.	BY
REVISIONS			

MATCH

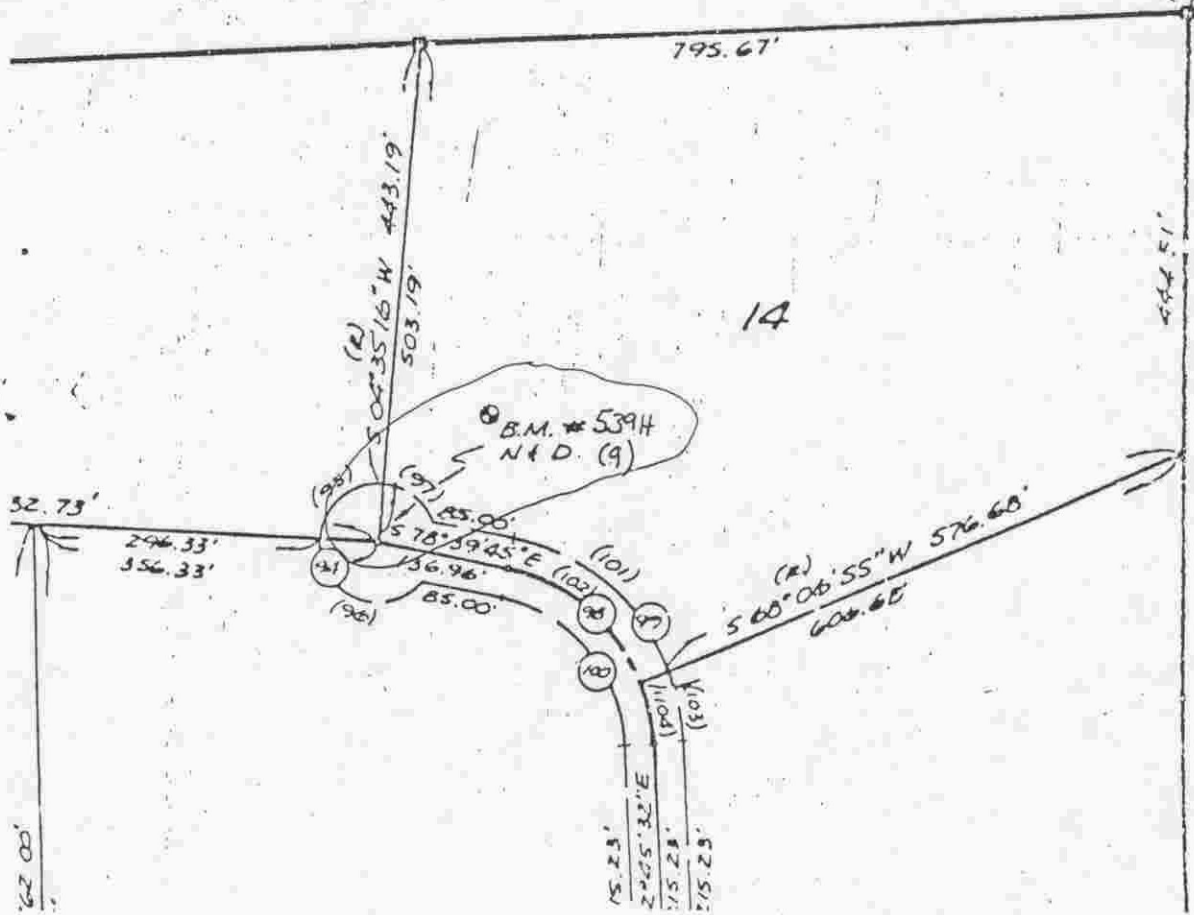
VILLE ROAD

20072014

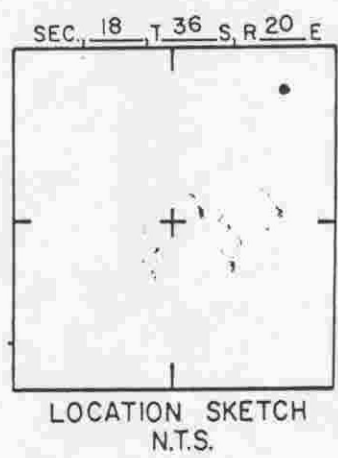
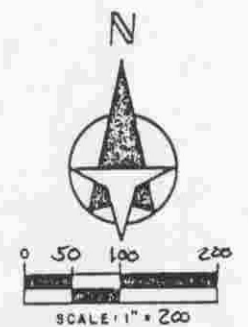


- (17) OVERALL CURVE DATA
- (18) PARTIAL CURVE DATA
- (R) RADIAL LINE
- ⊙ BENCH MARK

NE CORNER
 SEC. 18-36-20 (28)
 B.M. #539H 4" x 4" C.M.
 W/ BRASS DISC MARKED:
 ELEV = 49.81 BENCH NOS 7 & 8
 1877
 QNF. DOC # 20384

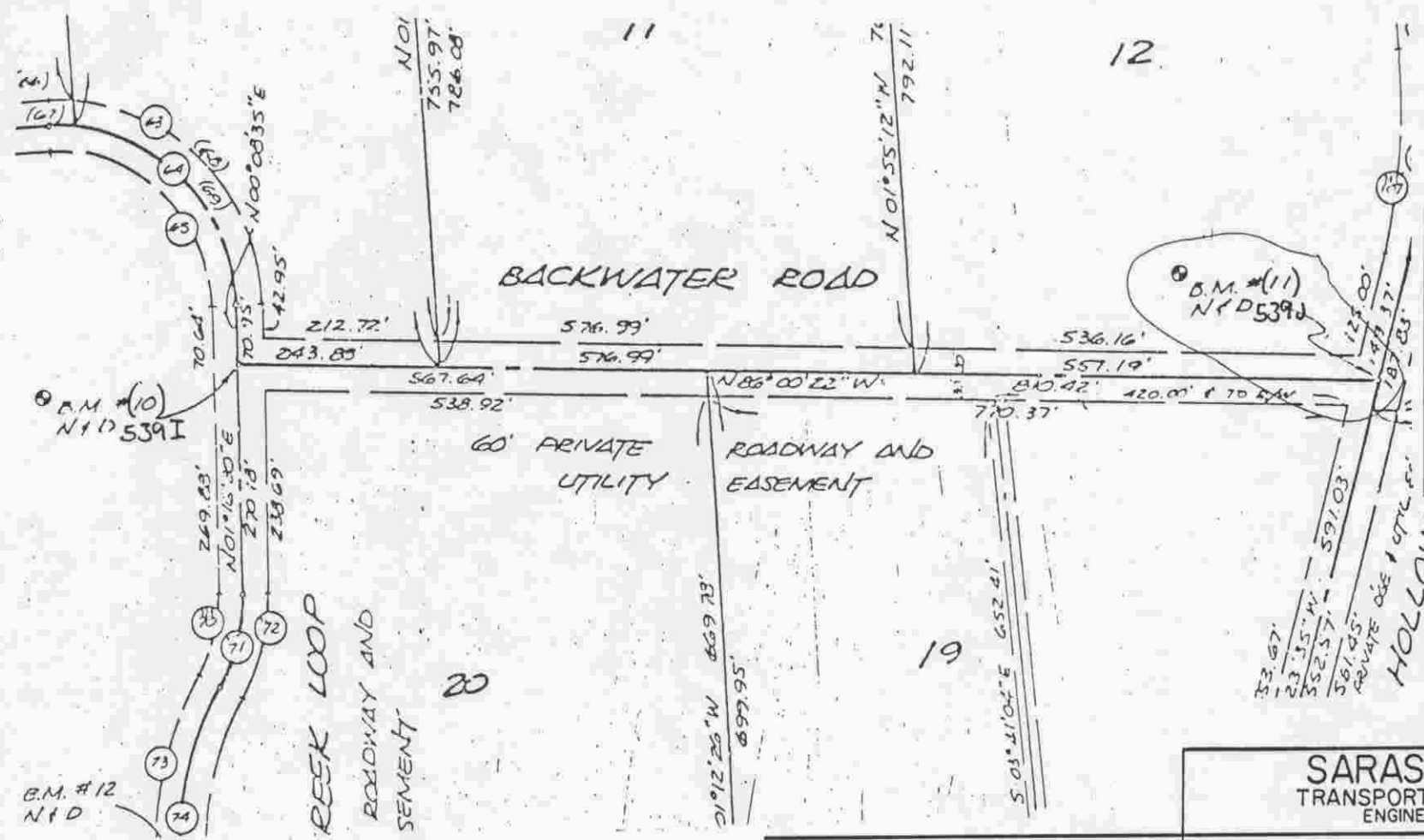
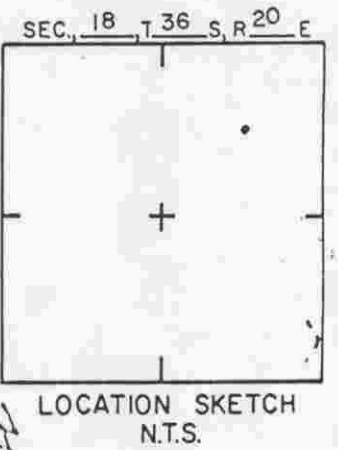
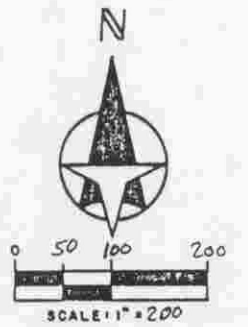


NORTH



THE RANCHES AT BERN CREEK
 SARASOTA COUNTY
 TRANSPORTATION DEPARTMENT
 ENGINEERING DIVISION

				BENCH MARK DATA SHEET		ELEV.
						51.69'
				DATE DRAWN: 8/85	BY: PJB	BM. NO.
				REF: O.R. 1793 PG. 2089 DATE 8/85		
REVISIONS				ELEV. BASED ON B.M. NO. J-93		

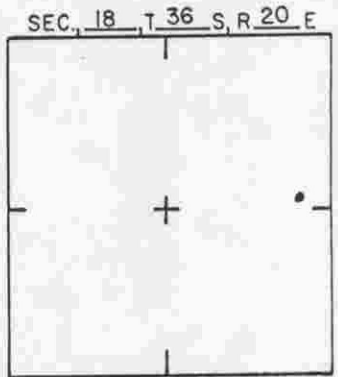
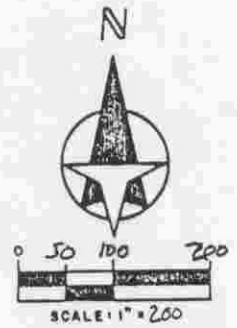
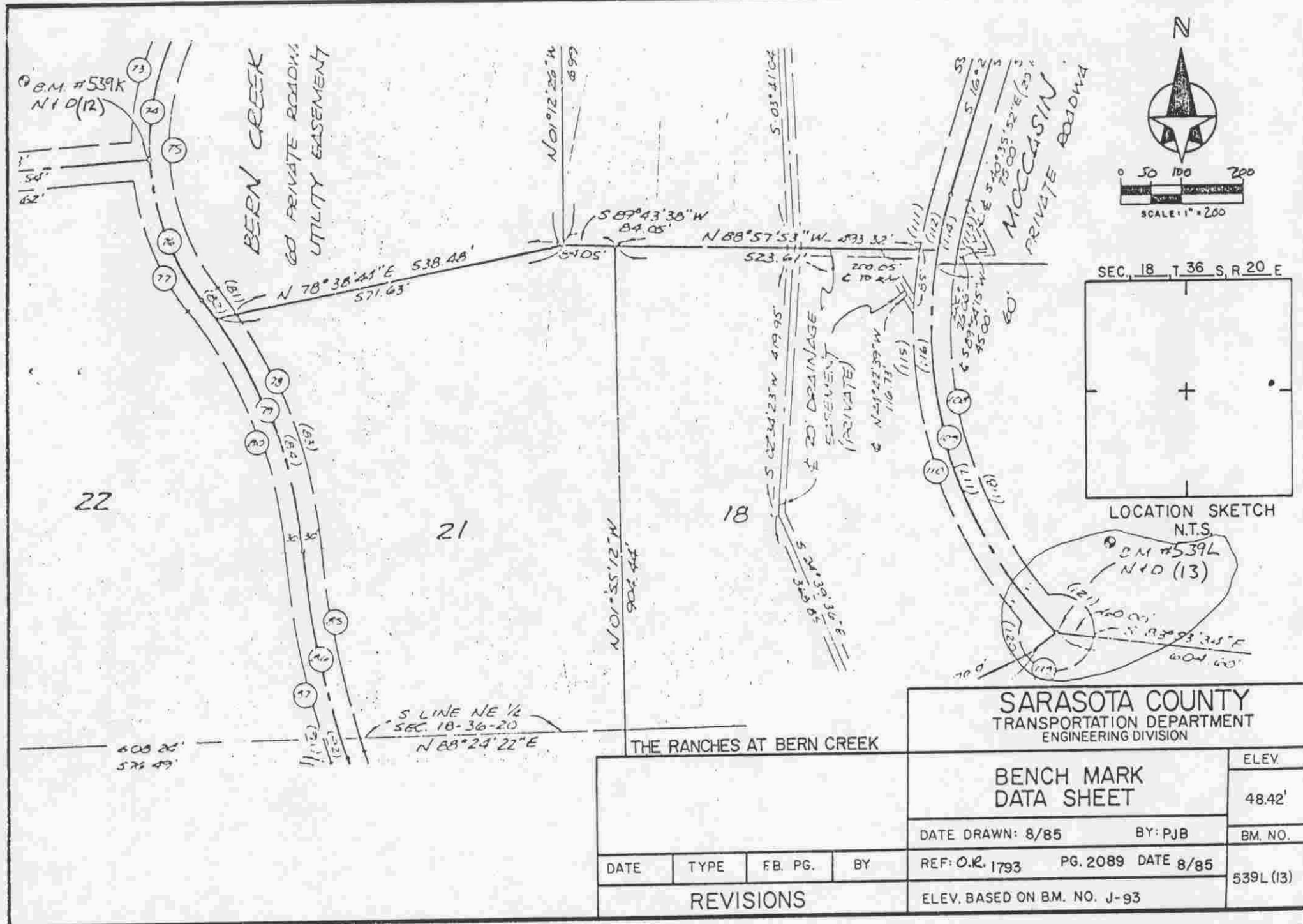


SARASOTA COUNTY
 TRANSPORTATION DEPARTMENT
 ENGINEERING DIVISION

**BENCH MARK
 DATA SHEET**

		DATE DRAWN: 8/85		BY: PJB		ELEV.
		REF: Q.R. 1793		PG. 2089		49.78'
		DATE 8/85				BM. NO.
		ELEV. BASED ON B.M. NO. J-93				539J (II)

DATE	TYPE	FB. PG.	BY
REVISIONS			



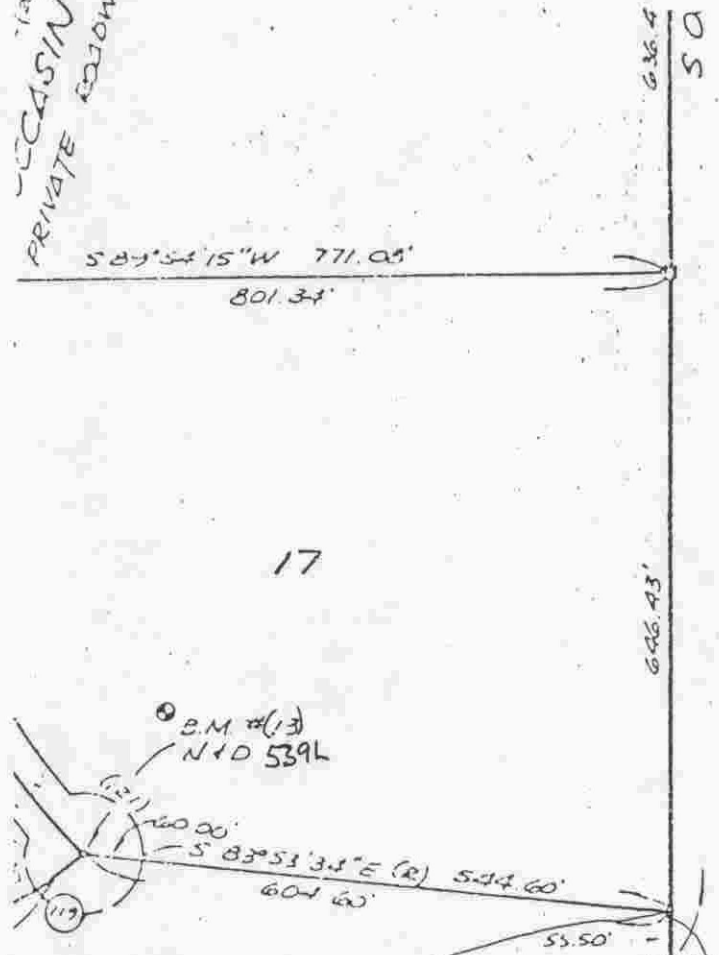
SARASOTA COUNTY
TRANSPORTATION DEPARTMENT
ENGINEERING DIVISION

BENCH MARK DATA SHEET		ELEV.
		48.42'
DATE DRAWN: 8/85		BY: PJB
REF: O.R. 1793		PG. 2089 DATE 8/85
ELEV. BASED ON B.M. NO. J-93		539L (13)

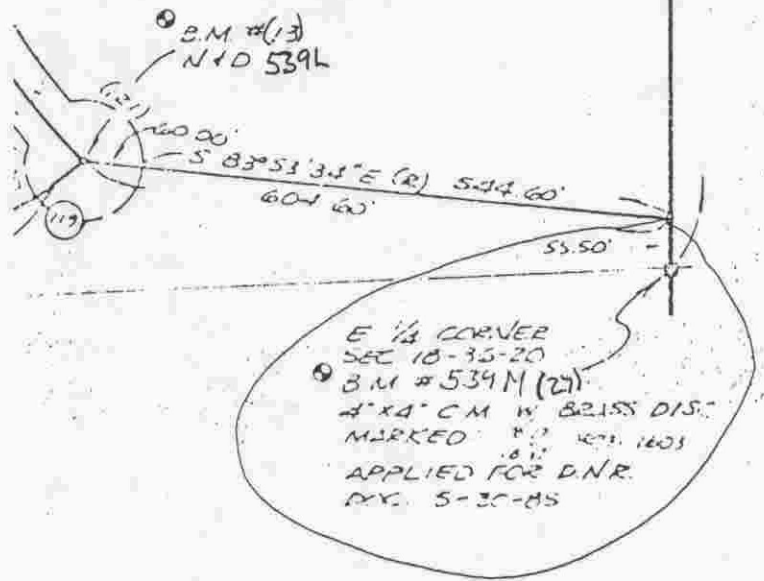
THE RANCHES AT BERN CREEK

DATE	TYPE	F.B. PG.	BY
REVISIONS			

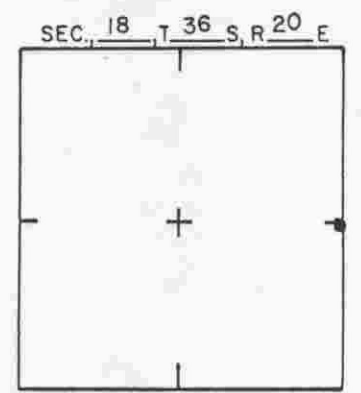
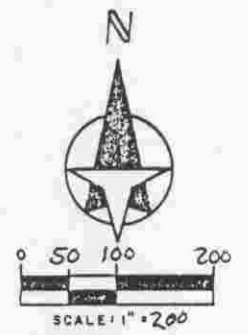
LUCASIN
PRIVATE COLONY



17



E 1/4 CORNER
SEC 10-35-20
B.M. # 539M (27)
4" X 4" C.M. W BRASS DIS.
MARKED "17" REF. 1403
APPLIED FOR D.N.R.
D.Y. 5-30-85



LOCATION SKETCH
N.T.S.

THE RANCHES AT BERN CREEK
SARASOTA COUNTY
TRANSPORTATION DEPARTMENT
ENGINEERING DIVISION

BENCH MARK
DATA SHEET

ELEV.

45.30'

BM. NO.

539M (27)

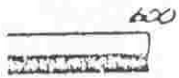
DATE DRAWN: 8/85 BY: PJB

REF: O.R. 1793 PG. 2089 DATE 8/85

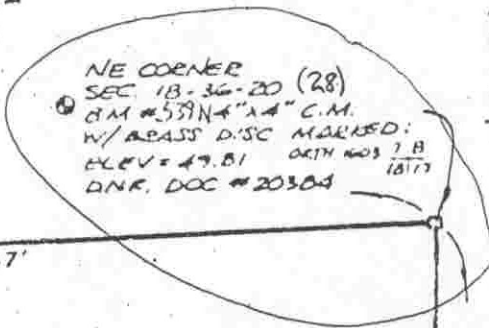
ELEV. BASED ON B.M. NO. J-93

DATE	TYPE	FB. PG.	BY
REVISIONS			

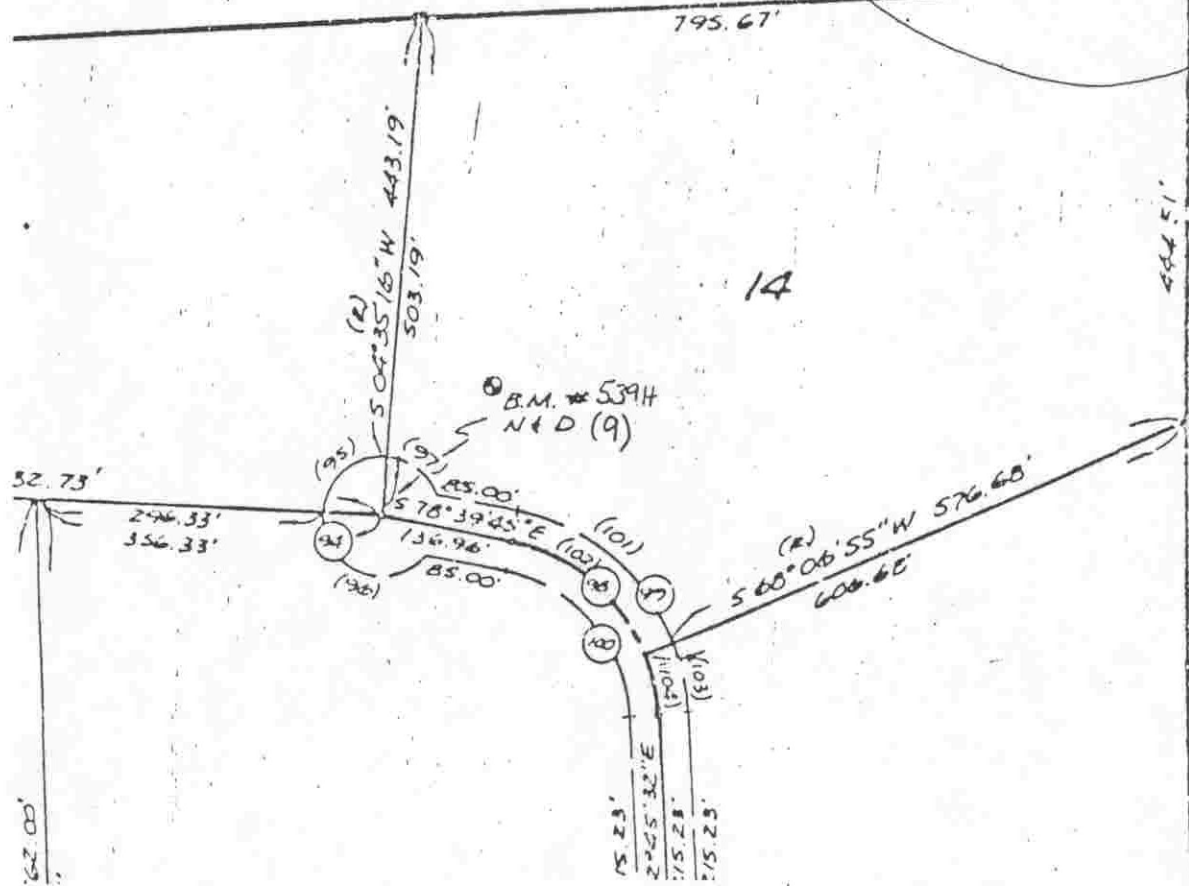
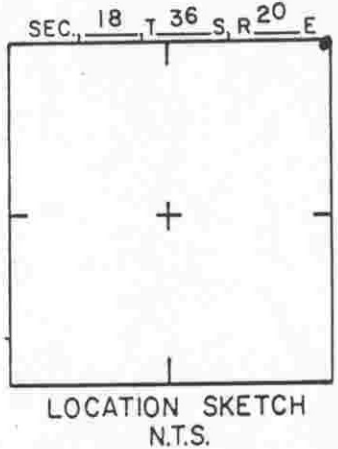
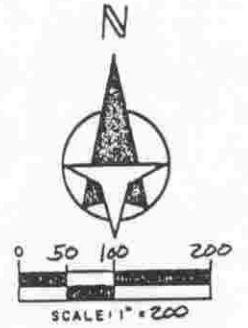
1087.60' W



- (17) OVERALL CURVE DATA
- (18) PARTIAL CURVE DATA
- (R) RADIAL LINE
- ⊙ BENCH MARK



HUBBARD



THE RANCHES AT BERN CREEK
 SARASOTA COUNTY
 TRANSPORTATION DEPARTMENT
 ENGINEERING DIVISION

				BENCH MARK DATA SHEET		ELEV.
						498'
REVISIONS				DATE DRAWN: 8/85	BY: PJB	BM. NO.
				REF: O.R. 1793	PG. 2089	DATE 8/85
				ELEV. BASED ON B.M. NO. J-93		