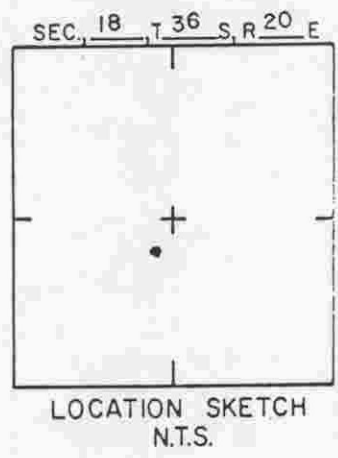
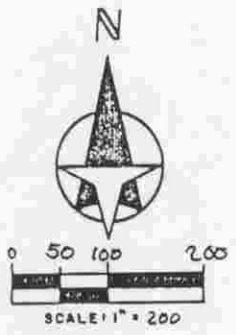
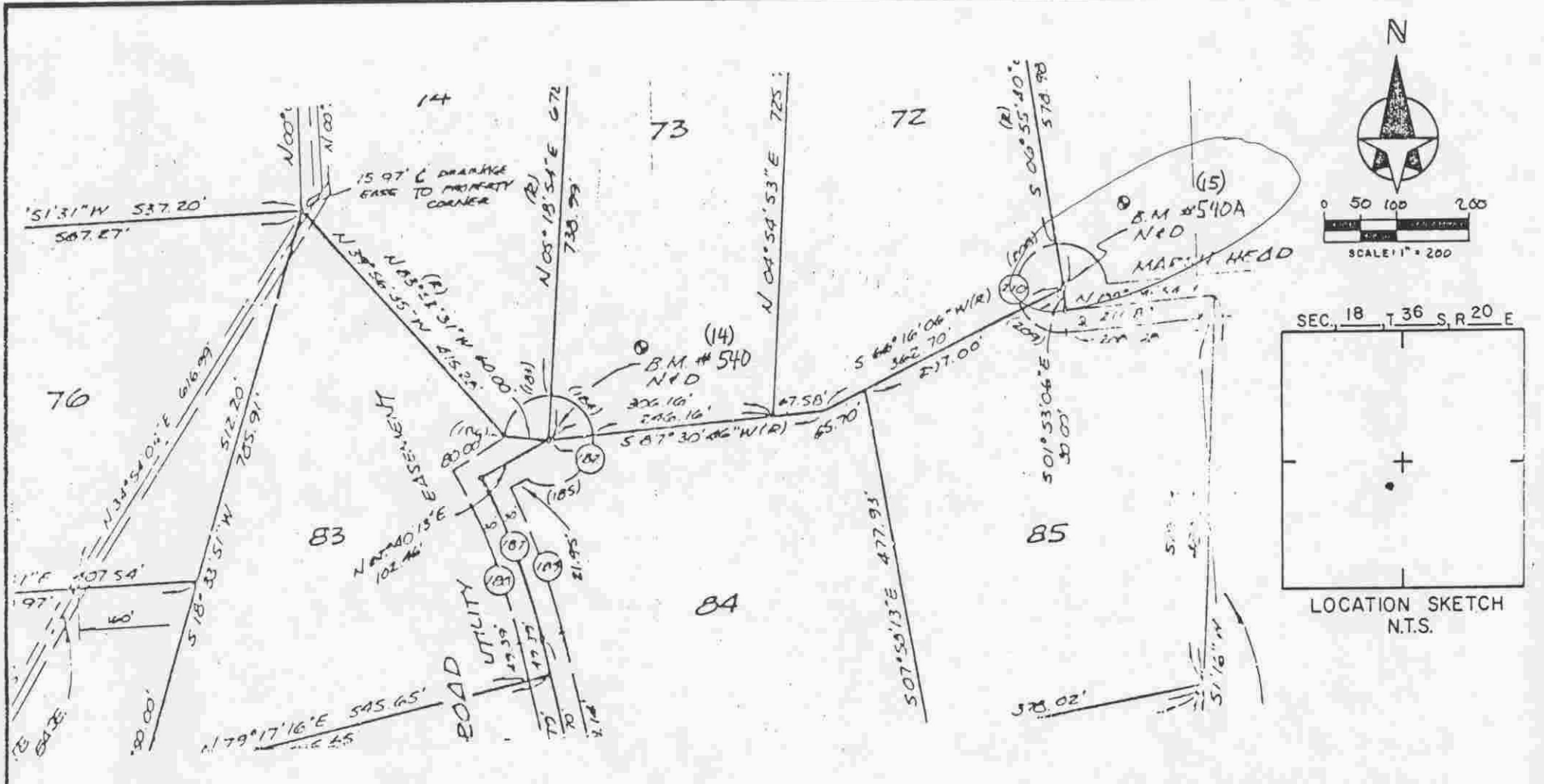


THE RANCHES AT BERN CREEK
 SARASOTA COUNTY
 TRANSPORTATION DEPARTMENT
 ENGINEERING DIVISION

				BENCH MARK DATA SHEET		ELEV.
						46.18'
REVISIONS				DATE DRAWN: 8/85	BY: PJB	BM. NO.
				DATE	TYPE	FB. PG.
				ELEV. BASED ON B.M. NO. J-93		

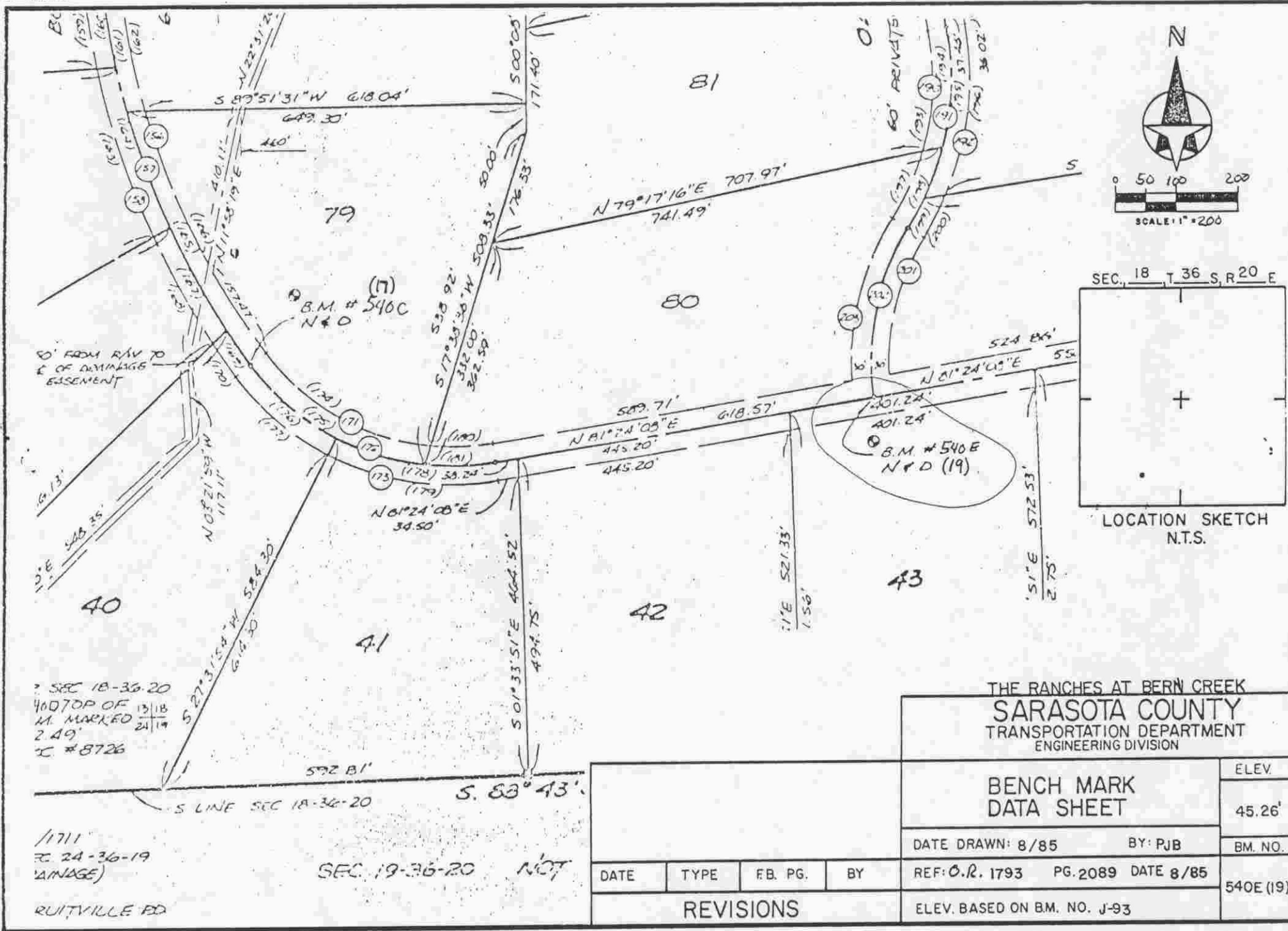


THE RANCHES AT BERN CREEK
 SARASOTA COUNTY
 TRANSPORTATION DEPARTMENT
 ENGINEERING DIVISION

**BENCH MARK
 DATA SHEET**

DATE DRAWN: 8/85		BY: PJB		ELEV.
REF: QR. 1793		PG. 2089 DATE 8/85		46.04'
ELEV. BASED ON B.M. NO. J-93				BM. NO.
				540A(15)

DATE	TYPE	FB. PG.	BY
REVISIONS			



SEC 18-36-20
400 TOP OF
M. MARKED 13/18
2.49' 24/19
#8726

1/1711
E 24-36-19
(DRAINAGE)
RUITVILLE RD

SEC 19-36-20 NOT

THE RANCHES AT BERN CREEK
SARASOTA COUNTY
TRANSPORTATION DEPARTMENT
ENGINEERING DIVISION

BENCH MARK
DATA SHEET

DATE DRAWN: 8/85 BY: PJB

REF: O.R. 1793 PG. 2089 DATE 8/85

ELEV. BASED ON B.M. NO. J-93

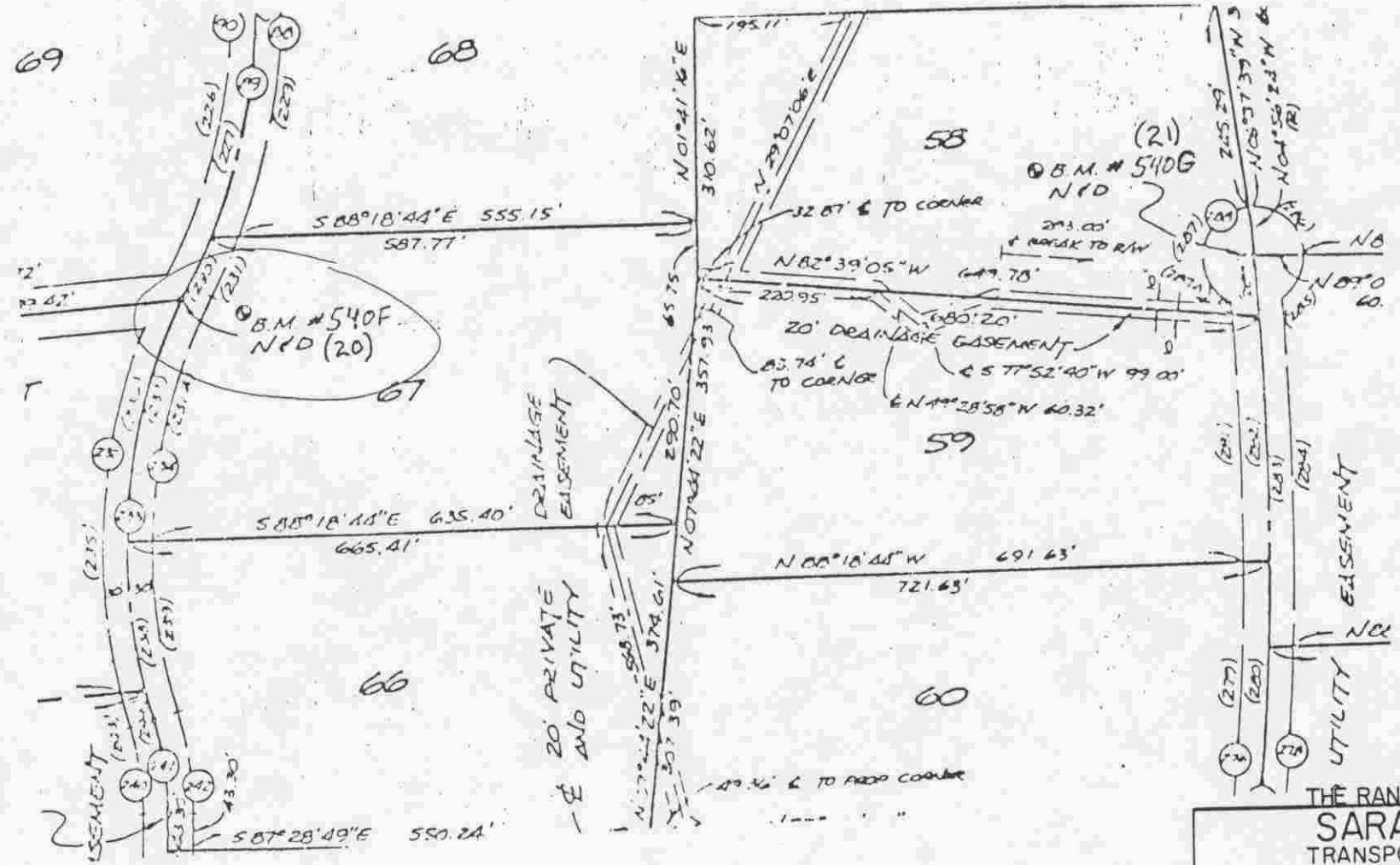
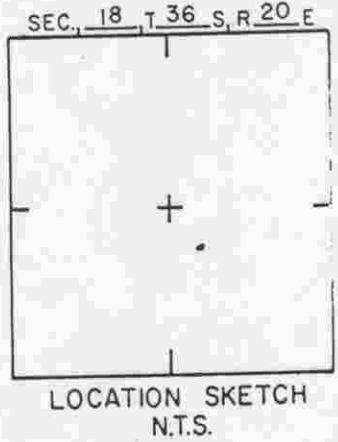
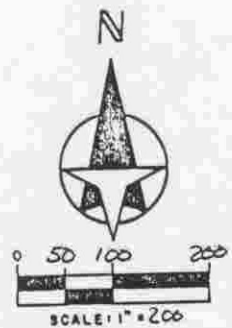
ELEV.

45.26'

BM. NO.

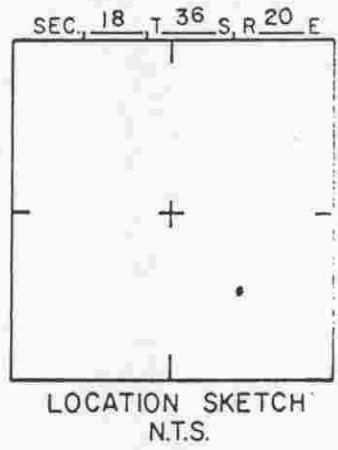
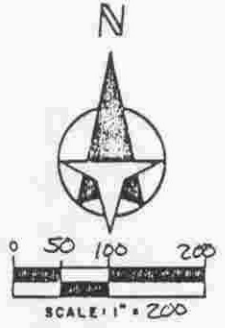
540E (19)

DATE	TYPE	FB. PG.	BY
REVISIONS			



THE RANCHES AT BERN CREEK
SARASOTA COUNTY
TRANSPORTATION DEPARTMENT
ENGINEERING DIVISION

BENCH MARK DATA SHEET				ELEV.
				4682'
DATE DRAWN: 8/85		BY: PJB		BM. NO.
REF: O.R. 1793 PG. 2089		DATE 8/85		540F(20)
ELEV. BASED ON B.M. NO. J-93				
REVISIONS				
DATE	TYPE	FB. PG.	BY	



THE RANCHES AT BERN-CREEK
 SARASOTA COUNTY
 TRANSPORTATION DEPARTMENT
 ENGINEERING DIVISION

BENCH MARK
 DATA SHEET

ELEV.
 46.43'
 BM. NO.

DATE DRAWN: 8/85 BY: PJB
 REF: O.R. 1793 PG. 2089 DATE 8/85

540H(22)

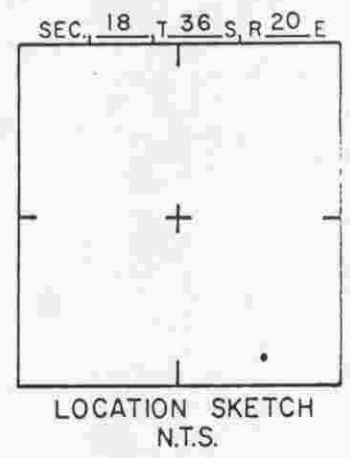
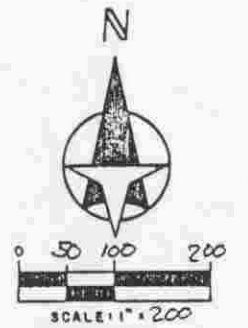
ELEV. BASED ON BM. NO. J-93

DATE	TYPE	FB. PG.	BY
REVISIONS			

DP
 UTILITY EASEMENT

B.M. #540I
 N+D (23)

39'
 S 50° E N. 15'

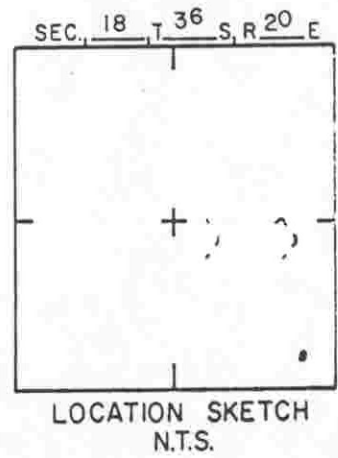
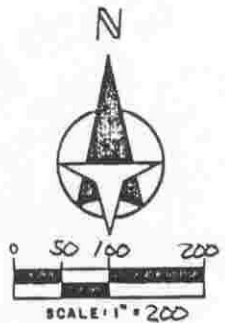
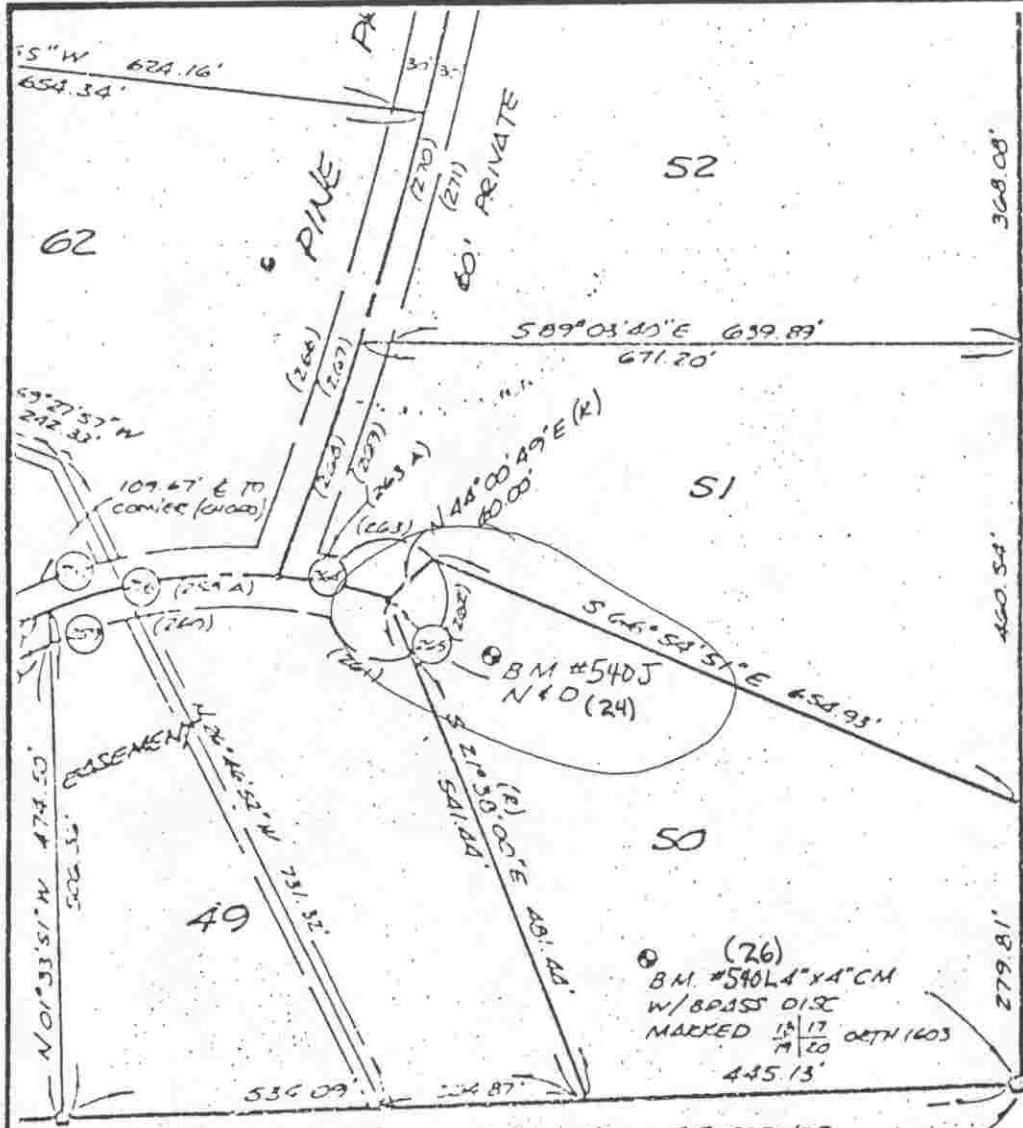


THE RANCHES AT BERN CREEK
 SARASOTA COUNTY
 TRANSPORTATION DEPARTMENT
 ENGINEERING DIVISION

**BENCH MARK
 DATA SHEET**

DATE DRAWN: 8/85		BY: PJB		ELEV.
REF: O.R. 1793		PG. 2089		DATE 8/85
ELEV. BASED ON B.M. NO. J-93				BM. NO.
				540I (23)

DATE	TYPE	FB. PG.	BY
REVISIONS			

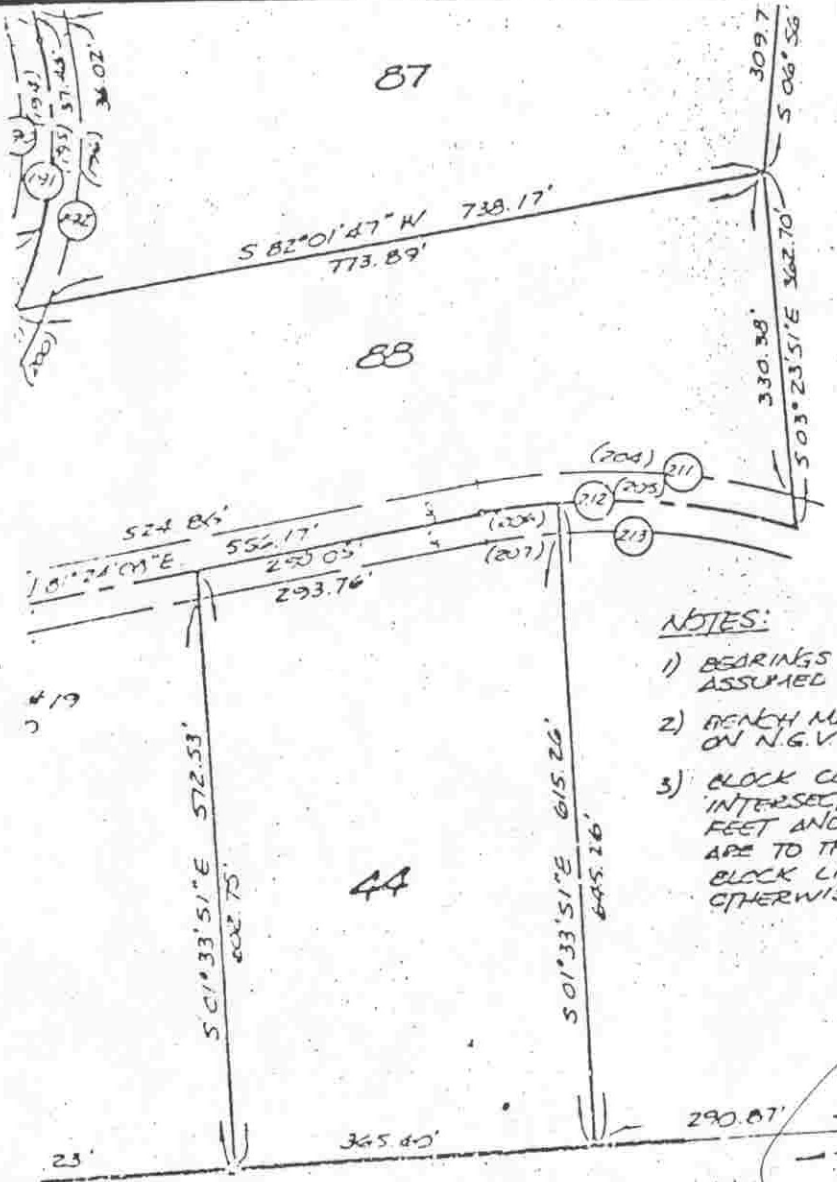


THE RANCHES AT BERN CREEK
 SARASOTA COUNTY
 TRANSPORTATION DEPARTMENT
 ENGINEERING DIVISION

**BENCH MARK
 DATA SHEET**

DATE DRAWN: 8/85		BY: PJB		ELEV.
REF: O.R. 1793		PG. 2089 DATE 8/85		47.31'
ELEV. BASED ON B.M. NO. J-93				BM. NO.
				540J (24)

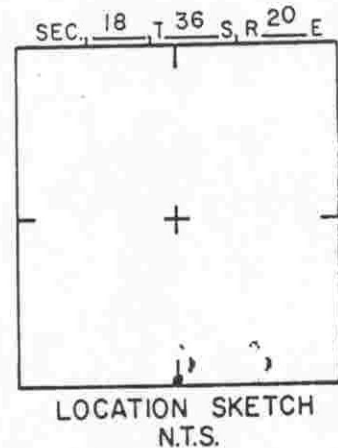
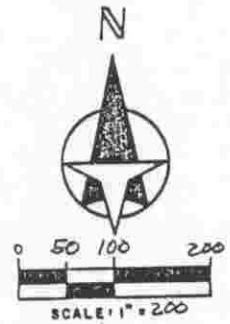
DATE	TYPE	FB.	PG.	BY
REVISIONS				



NOTES:

- 1) BEARINGS ARE BASED ON AN ASSUMED MERIDIAN.
- 2) BENCH MARKS SHOWN ARE BASED ON N.G.V.D. (SEE SHEET 2 OF 5)
- 3) BLOCK CORNER RADI AT INTERSECTING STREETS ARE 10.00 FEET AND CORNER LOT DIMENSIONS ARE TO THE INTERSECTION OF THE BLOCK LINES EXTENDED, UNLESS OTHERWISE SHOWN.

SOUTH 1/4 CORNER
 SEC. 18-36-20
 B.M. # 540K(25)
 APPLIED FOR D.N.R.
 DEC. 5-30-85

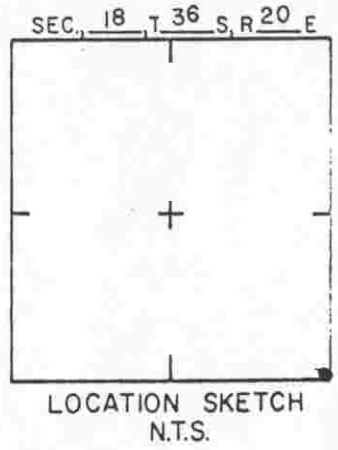
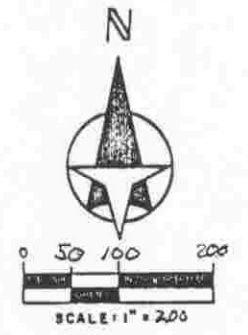
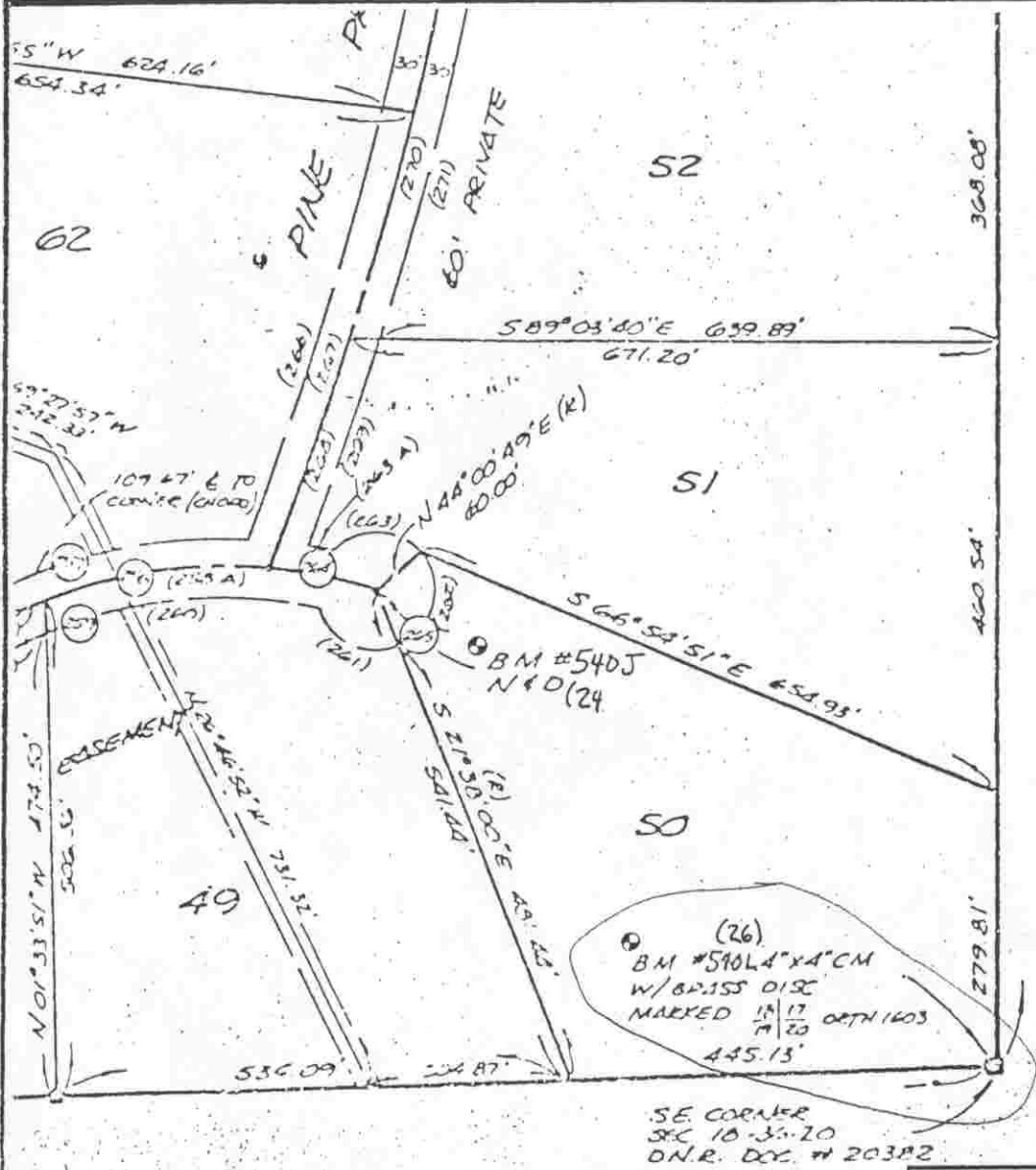


THE RANCHES AT BERN CREEK
SARASOTA COUNTY
 TRANSPORTATION DEPARTMENT
 ENGINEERING DIVISION

**BENCH MARK
 DATA SHEET**

	ELEV.
DATE DRAWN: 8/85 BY: PJB	43.9'
REF: O.R. 1793 PG. 2089 DATE 8/85	BM. NO.
ELEV. BASED ON B.M. NO. J-93	540K(25)

DATE	TYPE	FB. PG.	BY
REVISIONS			



THE RANCHES AT BERN CREEK
SARASOTA COUNTY
TRANSPORTATION DEPARTMENT
ENGINEERING DIVISION

BENCH MARK
DATA SHEET

ELEV.

46.34'

DATE DRAWN: 8/85 BY: PJB

BM. NO.

REF: O.R. 1793 PG. 2089 DATE 8/85

540L (26)

ELEV. BASED ON BM. NO. J-93

DATE	TYPE	FB. PG.	BY
REVISIONS			