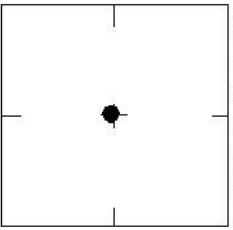


WGS 83	Lgt: °	REVISIONS / REMARKS
84	Lon: °	
FL W. N.		
83	E.	

DATE DRAWN: 12-01-04	BY: JRM	ELEV.
REF: FB-1(DL-1) PG. 92 DATE: 8-12-03		14.74'
ELEV. BASED ON B.M. NO. SARCO BM 54		B.M. NO. R55-1

SARASOTA COUNTY
 Geomatics Service Center
 SURVEY/MAPPING SECTION

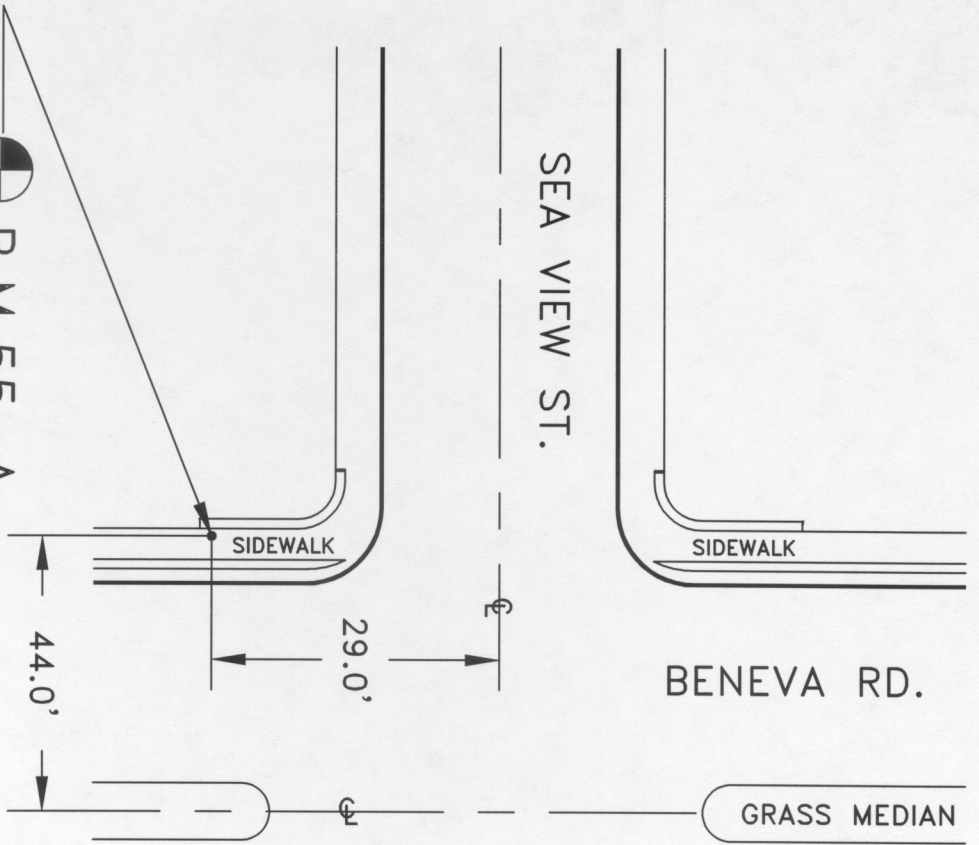
LOCATION SKETCH
 N.T.S.




SEC.: 28, T. 36, S. R. 18, E.

SCALE: N.T.S.



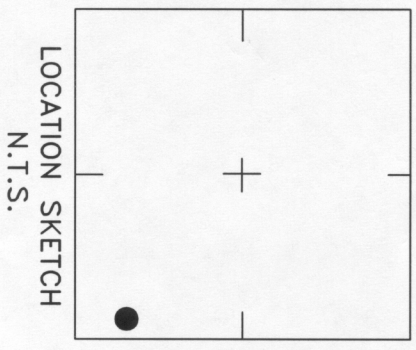



 B.M. 55-A
 4" BRONZE DISK
 IN SIDEWALK



SCALE: N.T.S.

SEC., 28, T. 36, S. R. 18 E



REVISIONS / REMARKS

18 MAY 98	E/O	MLS
SET BY: SARASOTA COUNTY		

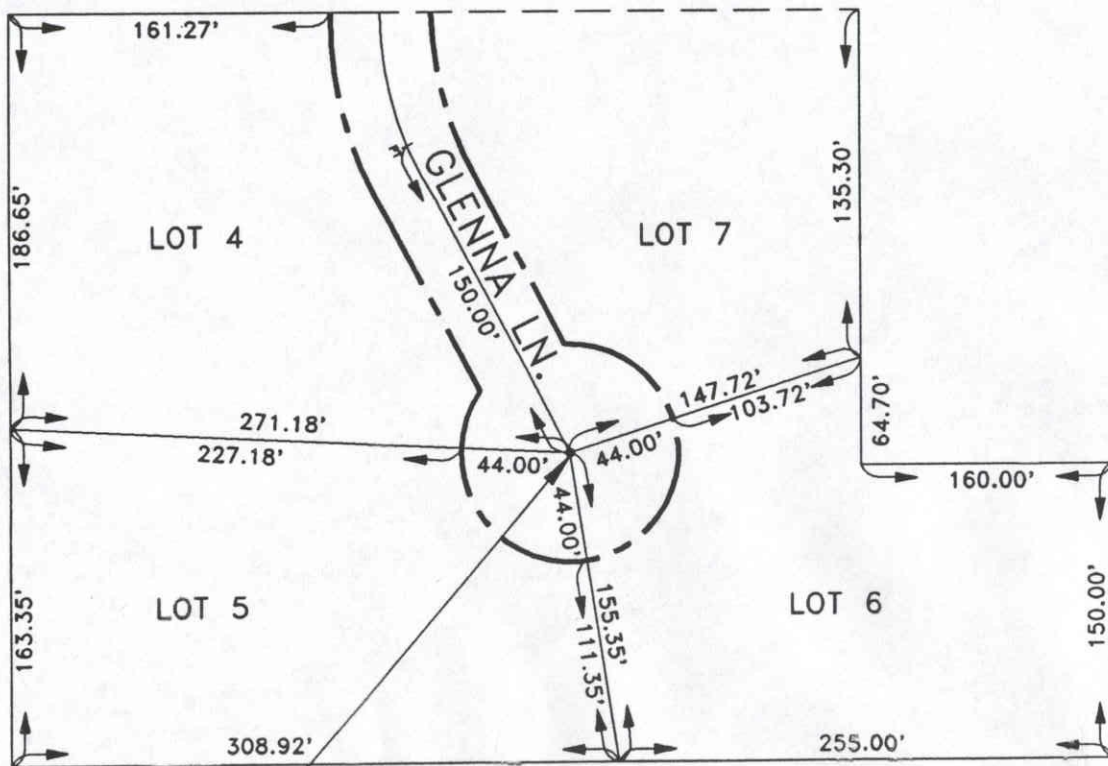
SARASOTA COUNTY
 TRANSPORTATION DEPARTMENT
 ENGINEERING DIVISION, SURVEY/MAPPING SECTION

BENCH MARK
 DATA SHEET

DATE DRAWN: 02/28/92 BY: DSW
 REF.: FB. 279 PG. 64 DATE: 08/12/91
 ELEV. BASED ON B.M. NO. FORMER SARCO 52-L

ELEV. 16.409'

B.M. NO. 55-A



BENCHMARK TOP OF
CONCRETE MONUMENT.

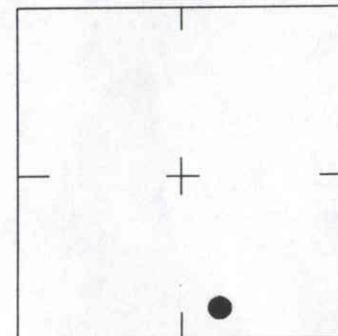
GLEN HAMMOCK
PB.35 PG.27
TOP OF CONCRETE MONUMENT

N



SCALE: N.T.S.

SEC., 28 , T 36 S, R 18 E



LOCATION SKETCH
N.T.S.

REVISIONS / REMARKS
SET BY: CALVIN REED LAND SURVEYING

SARASOTA COUNTY TRANSPORTATION DEPARTMENT ENGINEERING DIVISION, SURVEY/MAPPING SECTION	
BENCH MARK DATA SHEET	ELEV. 16.60'
DATE DRAWN: 02/10/92 BY: DSW	B.M. NO.
REF.: PB. 35 PG. 27 DATE: 12/16/91	55-B
ELEV. BASED ON B.M. NO. SARCO 53-E EL.=17.10'	