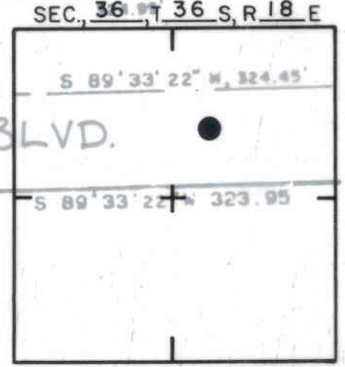
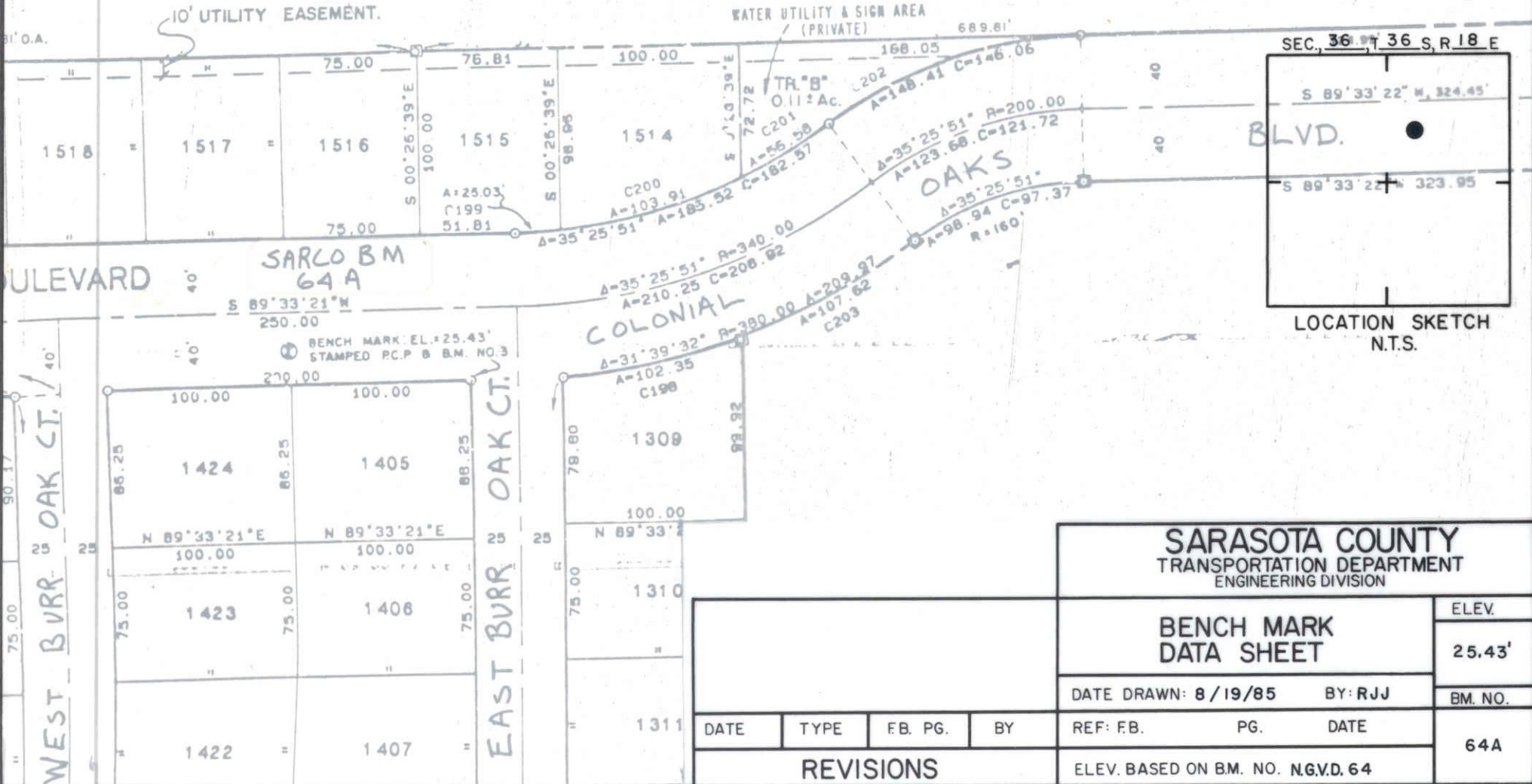


**COLONIAL OAKS**  
**UNIT NO. 22**  
**A SUBDIVISION**  
 SEC. 36 - TWP. 36 S. - RGE. 18 E.  
 COUNTY OF SARASOTA STATE OF FLORIDA



SCALE: 1" = 80'

NE COR. OF S.W. 1/4 OF SEC. 36-



ULEVARD

SARCO BM 64 A

COLONIAL

OAKS

BLVD.

WEST BURR OAK CT.

EAST BURR OAK CT.

**SARASOTA COUNTY**  
**TRANSPORTATION DEPARTMENT**  
 ENGINEERING DIVISION

**BENCH MARK**  
**DATA SHEET**

ELEV.

25.43'

BM. NO.

64A

DATE DRAWN: 8/19/85 BY: RJJ

REF: F.B. PG. DATE

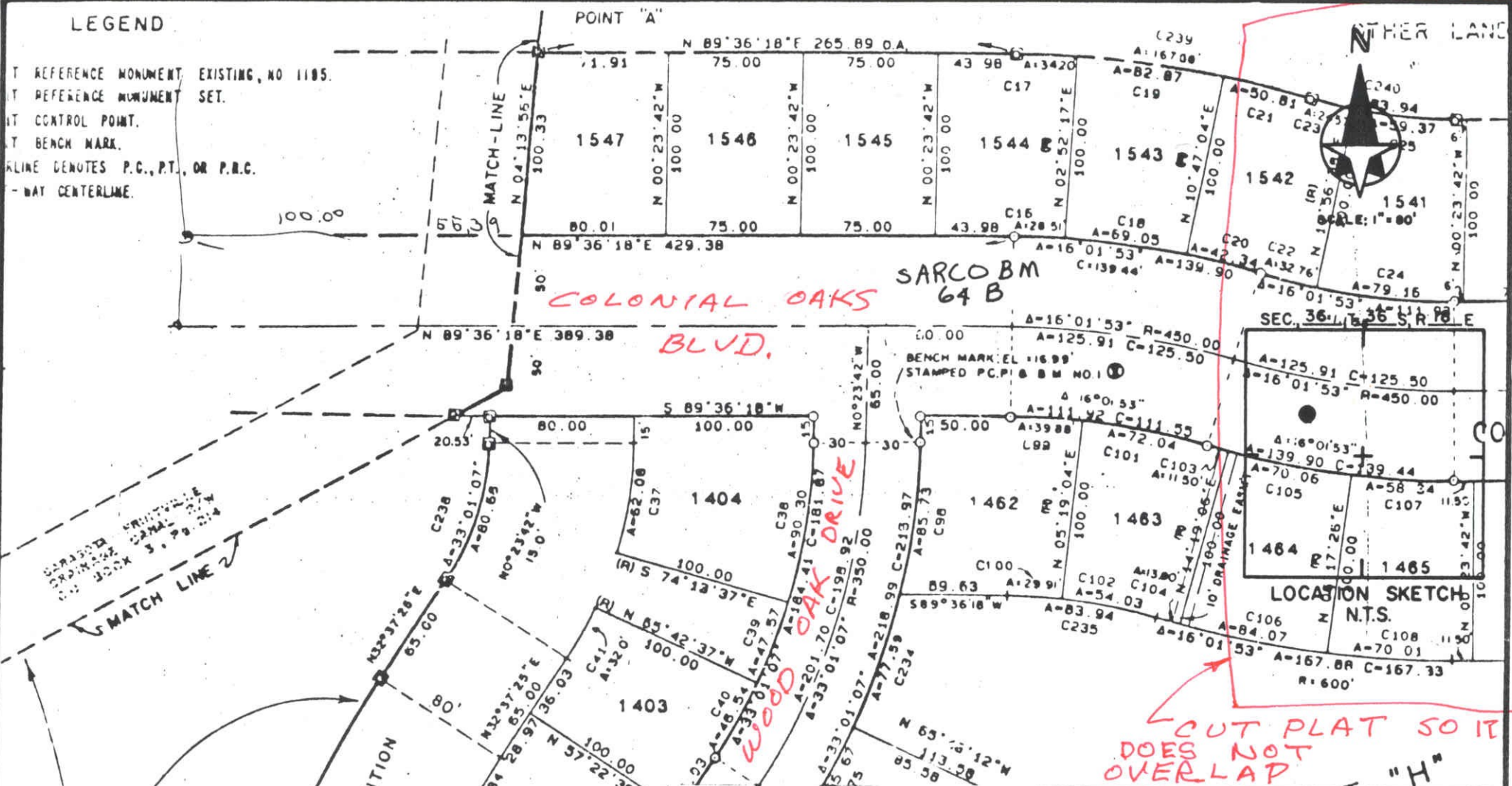
ELEV. BASED ON B.M. NO. N.G.V.D. 64

DATE	TYPE	F.B. PG.	BY

REVISIONS

LEGEND

- T REFERENCE MONUMENT, EXISTING, NO. 1105.
- T REFERENCE MONUMENT SET.
- BT CONTROL POINT.
- BT BENCH MARK.
- PLINE DENOTES P.C., P.T., OR P.R.C.
- WAY CENTERLINE.



MCS

CUT PLAT SO IT DOES NOT OVERLAP "H"

SARASOTA COUNTY  
TRANSPORTATION DEPARTMENT  
ENGINEERING DIVISION

BENCH MARK  
DATA SHEET

ELEV.  
16.99'  
BM. NO.  
64B

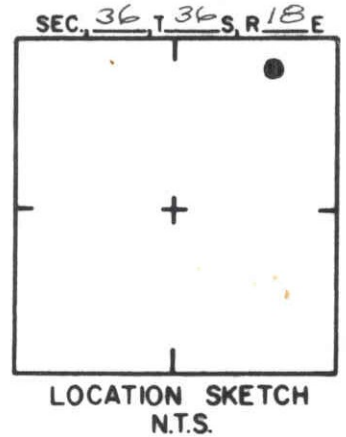
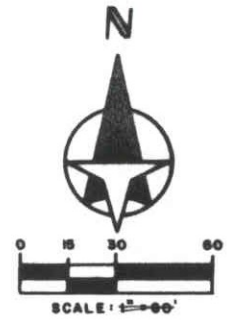
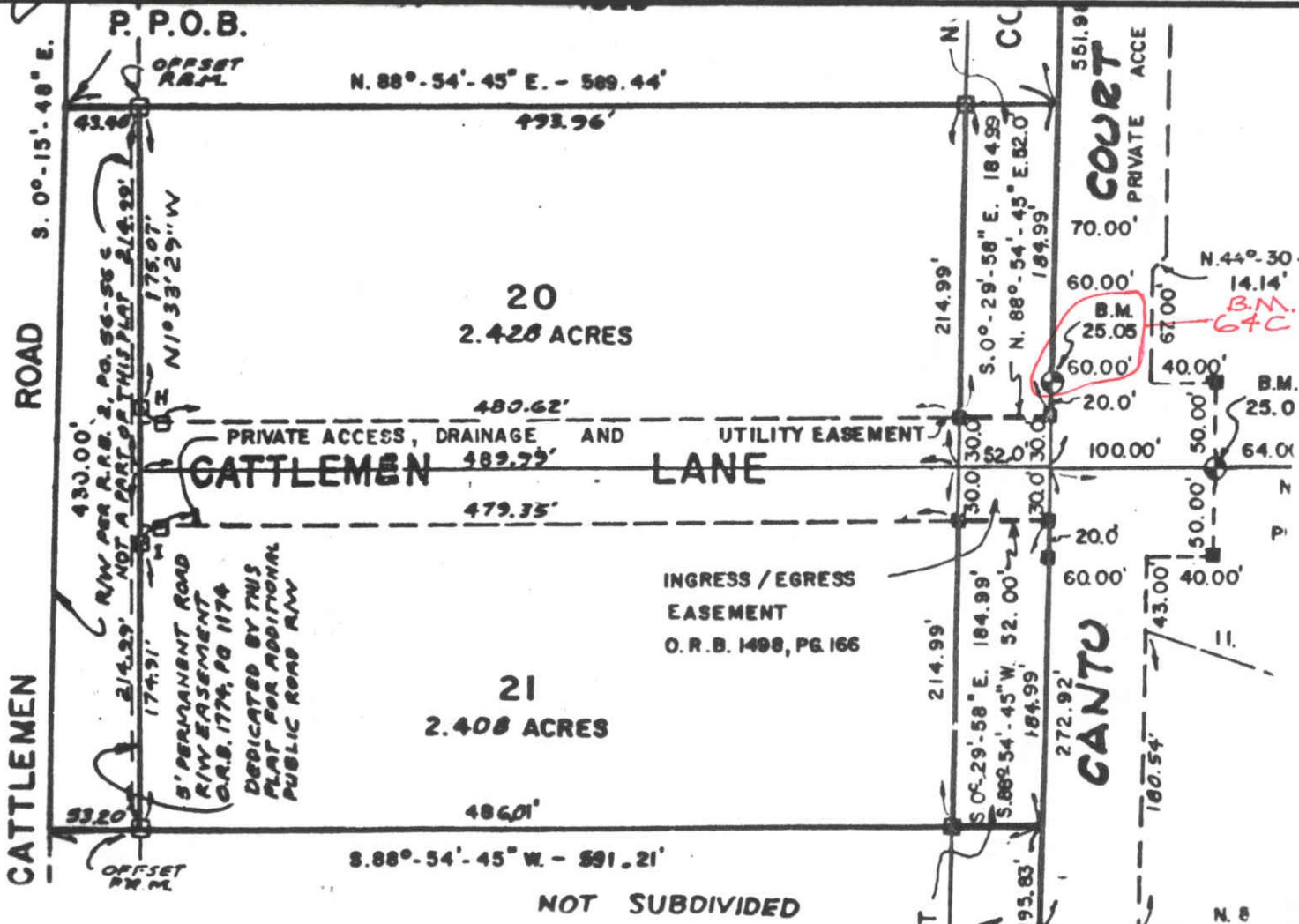
DATE DRAWN: 8-19-85 BY: RJJ

REF: FB-PB, 30 PG. 23C DATE

ELEV. BASED ON BM. NO. N.G.V.D. 64

DATE	TYPE	FB. PG.	BY

REVISIONS:



**SARASOTA COUNTY**  
 TRANSPORTATION DEPARTMENT  
 ENGINEERING DIVISION

**BENCH MARK  
 DATA SHEET**

ELEV.  
 25.05'  
 BM. NO.

DATE DRAWN: 10-8-86 BY: WFW

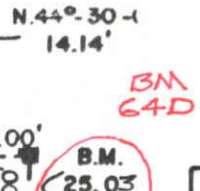
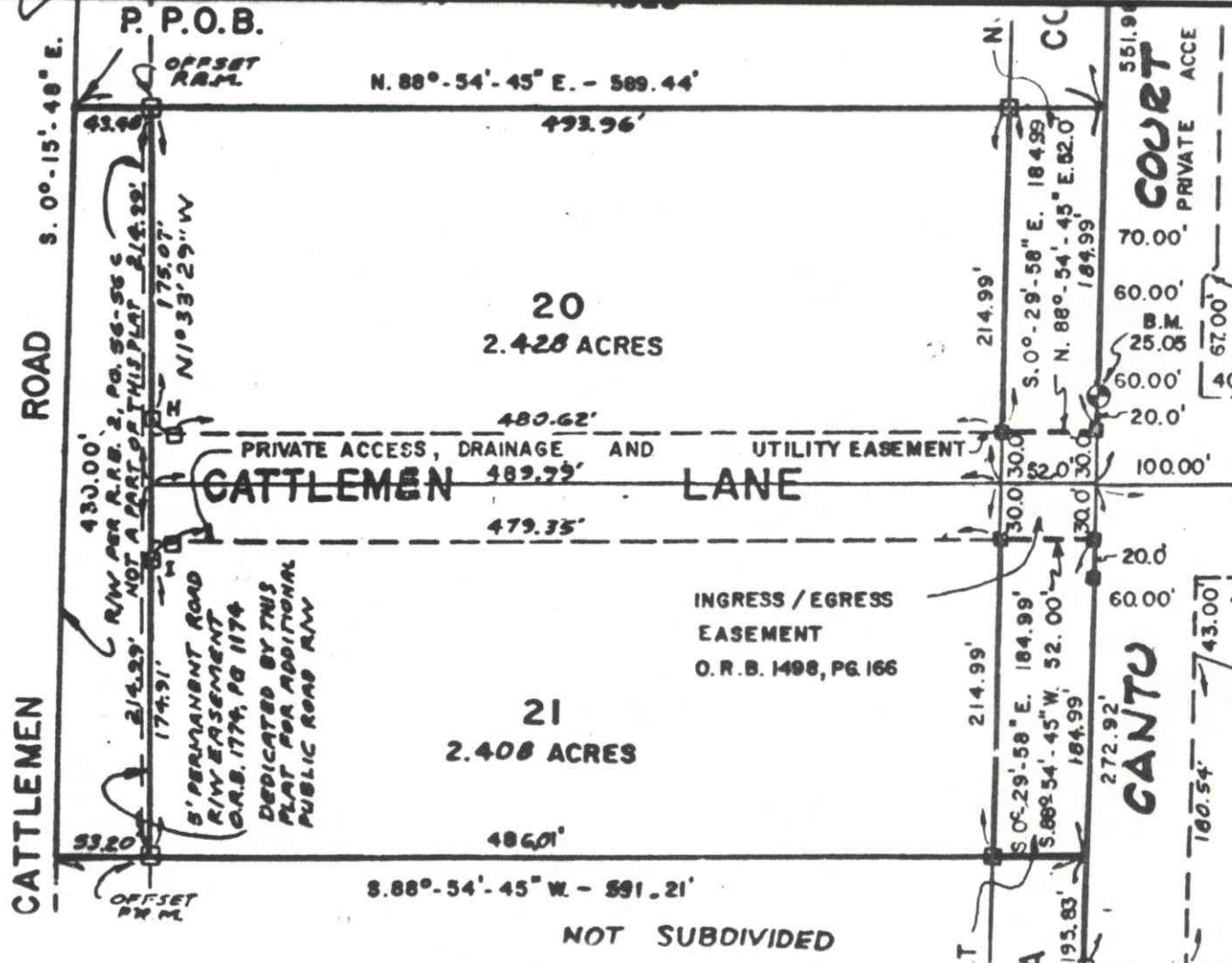
DATE	TYPE	FB. PG.	BY
------	------	---------	----

REF: FB. PG. DATE

**REVISIONS**

ELEV. BASED ON B.M. NO. 64

64-C



SEC. 36, T. 36 S., R. 18 E.

LOCATION SKETCH  
N.T.S.

**SARASOTA COUNTY**  
TRANSPORTATION DEPARTMENT  
ENGINEERING DIVISION

**BENCH MARK  
DATA SHEET**

ELEV.  
25.03  
BM. NO.

DATE DRAWN: 10-8-86 BY: WFW

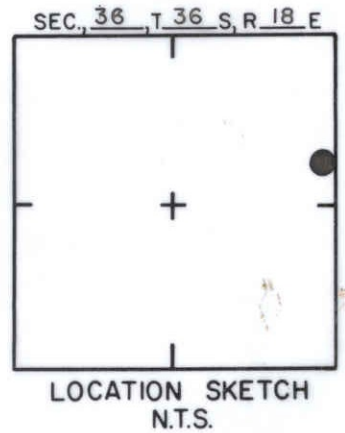
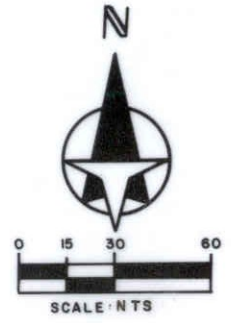
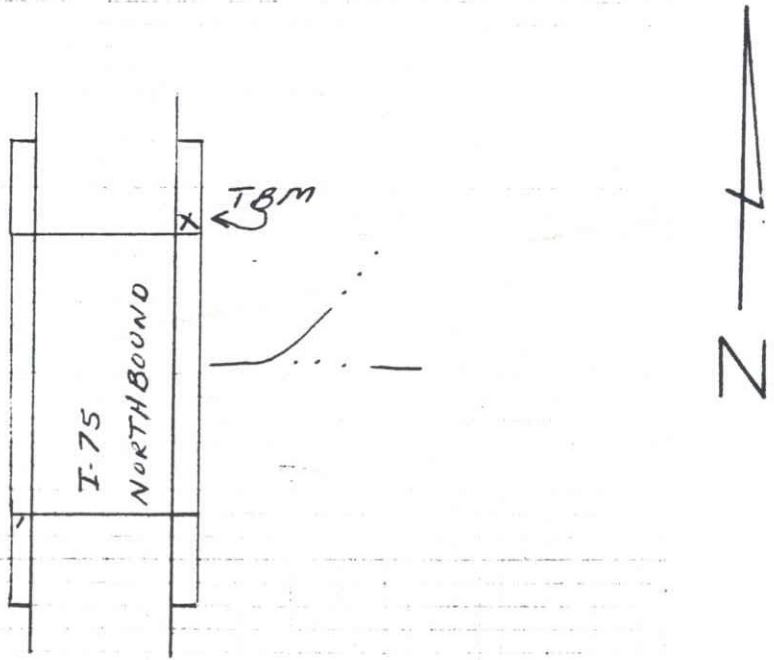
REF: F.B. PG. DATE

64-D

ELEV. BASED ON B.M. NO. 64

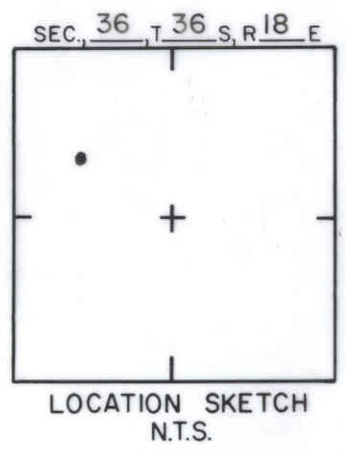
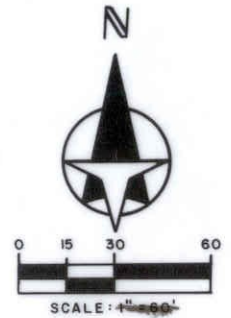
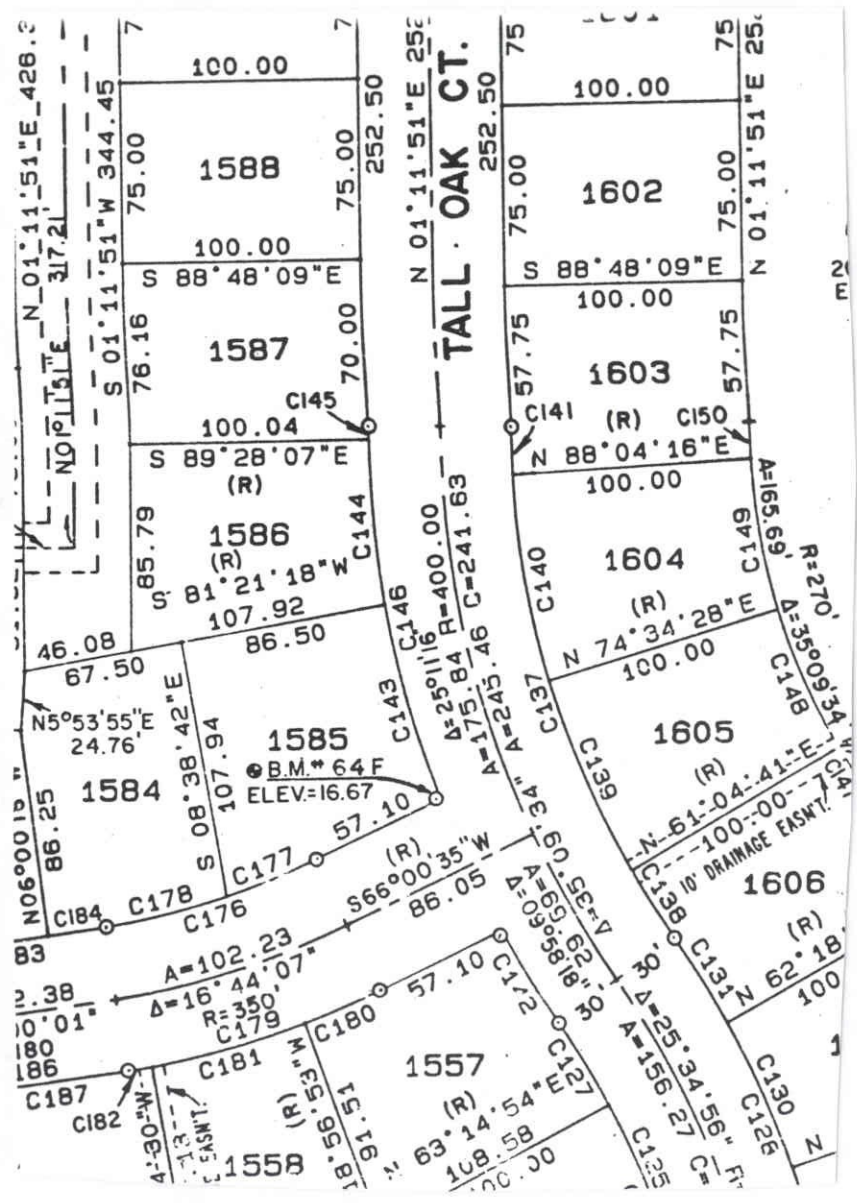
DATE	TYPE	FB. PG.	BY
REVISIONS			

TO REACH THE MARK FROM INTER EEE RIDGE RD & I-75;  
 GO N. ± 0.60 MILES. TBM IS D.C.T. BRASS  
 CAP SET ON NE END CONC BRIDGE PILE.



<b>SARASOTA COUNTY</b> TRANSPORTATION DEPARTMENT ENGINEERING DIVISION			
<b>BENCH MARK                  DATA SHEET</b>			ELEV. 34.54'
DATE DRAWN: 1-29-87		BY: RJJ	
REF: SW FWMD HFH 157			DATE 10/81
ELEV. BASED ON B.M. NO. NOS			BM. NO. 64E

REVISIONS			
DATE	TYPE	F.B. PG.	BY



**SARASOTA COUNTY**  
TRANSPORTATION DEPARTMENT  
ENGINEERING DIVISION

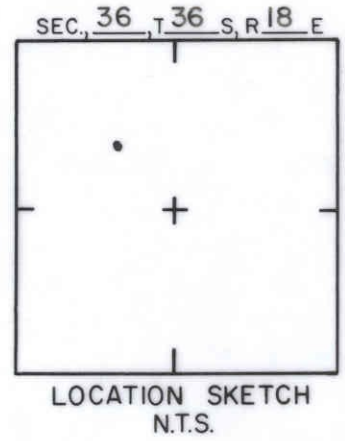
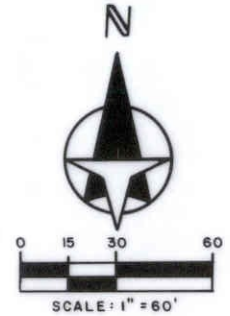
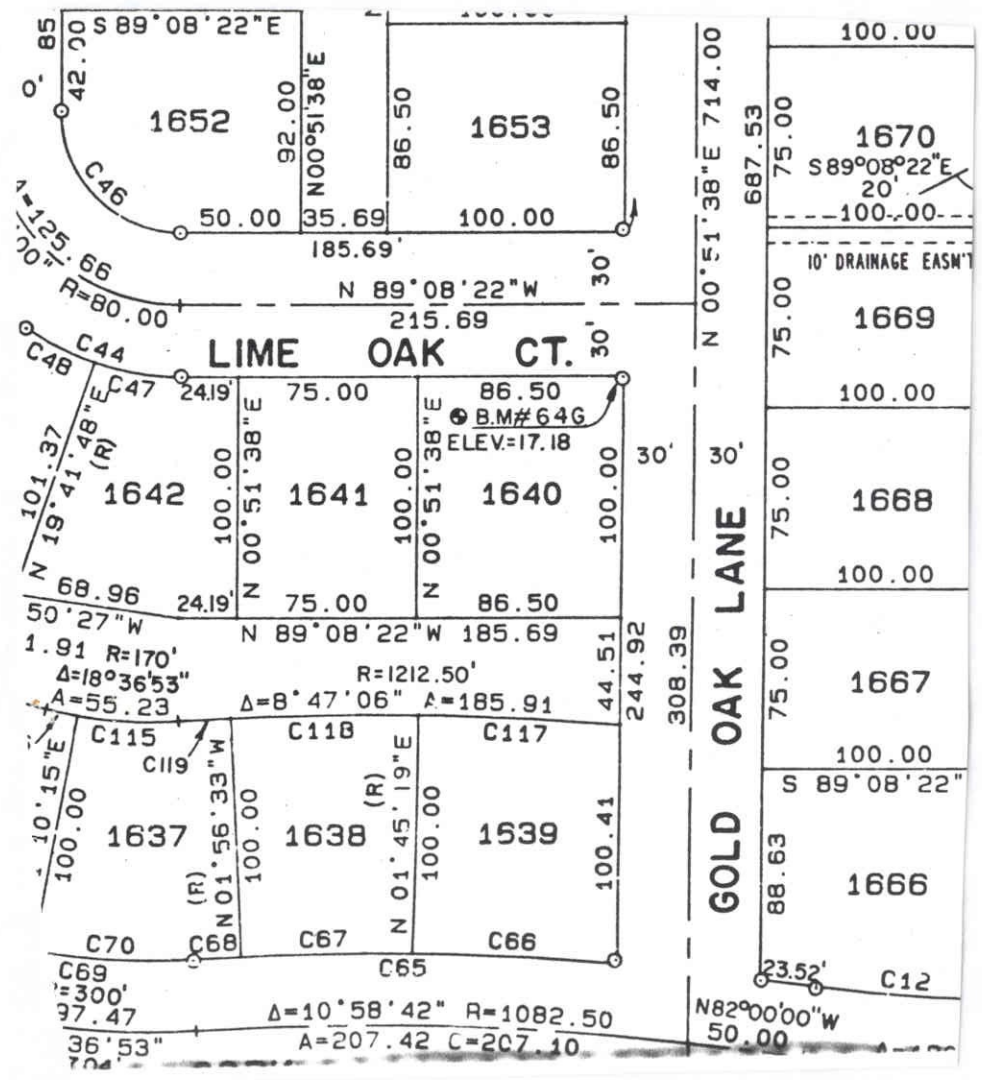
**BENCH MARK DATA SHEET**

				ELEV.
				16.67'
				BM. NO.
				64 F
DATE	TYPE	F.B. PG.	BY	REF: F.B. 30 PG. 23 DATE
REVISIONS				ELEV. BASED ON B.M. NO. 64

DATE DRAWN: 11-10-87 BY: RAK

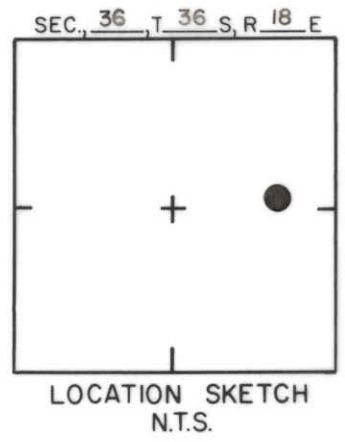
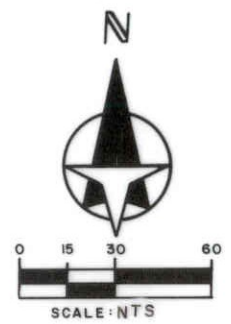
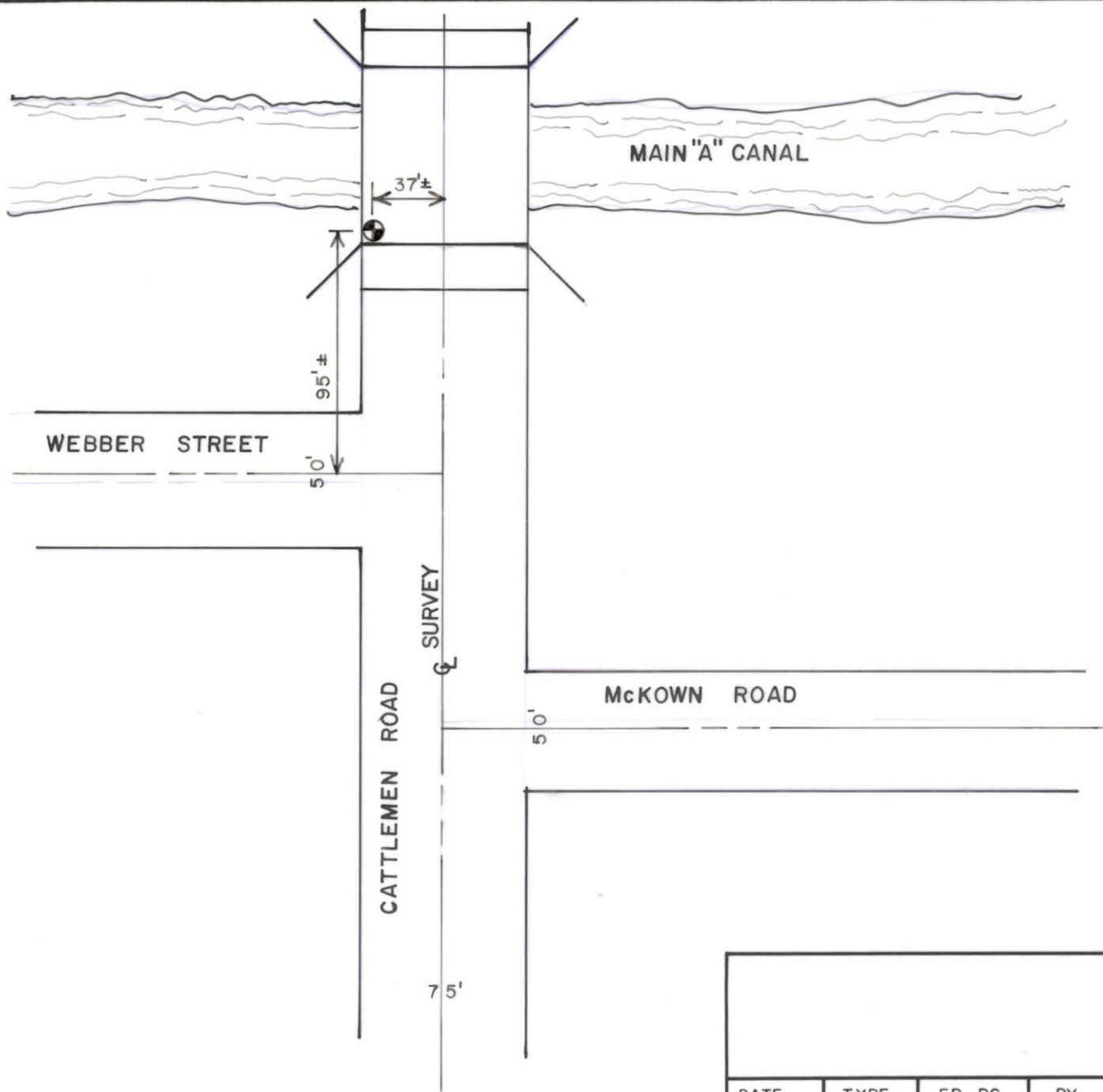
REF: F.B. 30 PG. 23 DATE

ELEV. BASED ON B.M. NO. 64



**SARASOTA COUNTY**  
TRANSPORTATION DEPARTMENT  
ENGINEERING DIVISION

				BENCH MARK DATA SHEET		ELEV.
						17.18'
REVISIONS				DATE DRAWN: 11-10-87 BY: RAK		BM. NO.
				REF: F.B. 32 PG. 13 DATE		64G
				ELEV. BASED ON B.M. NO. 64		

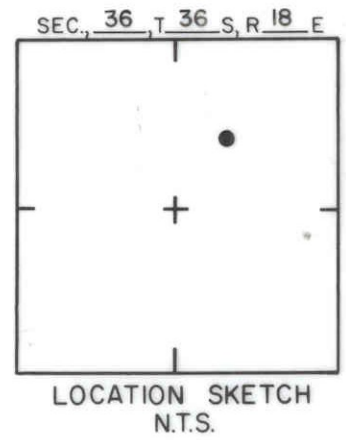
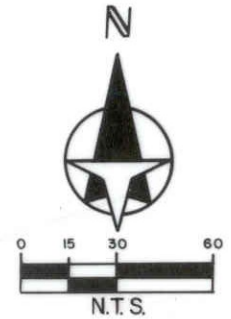
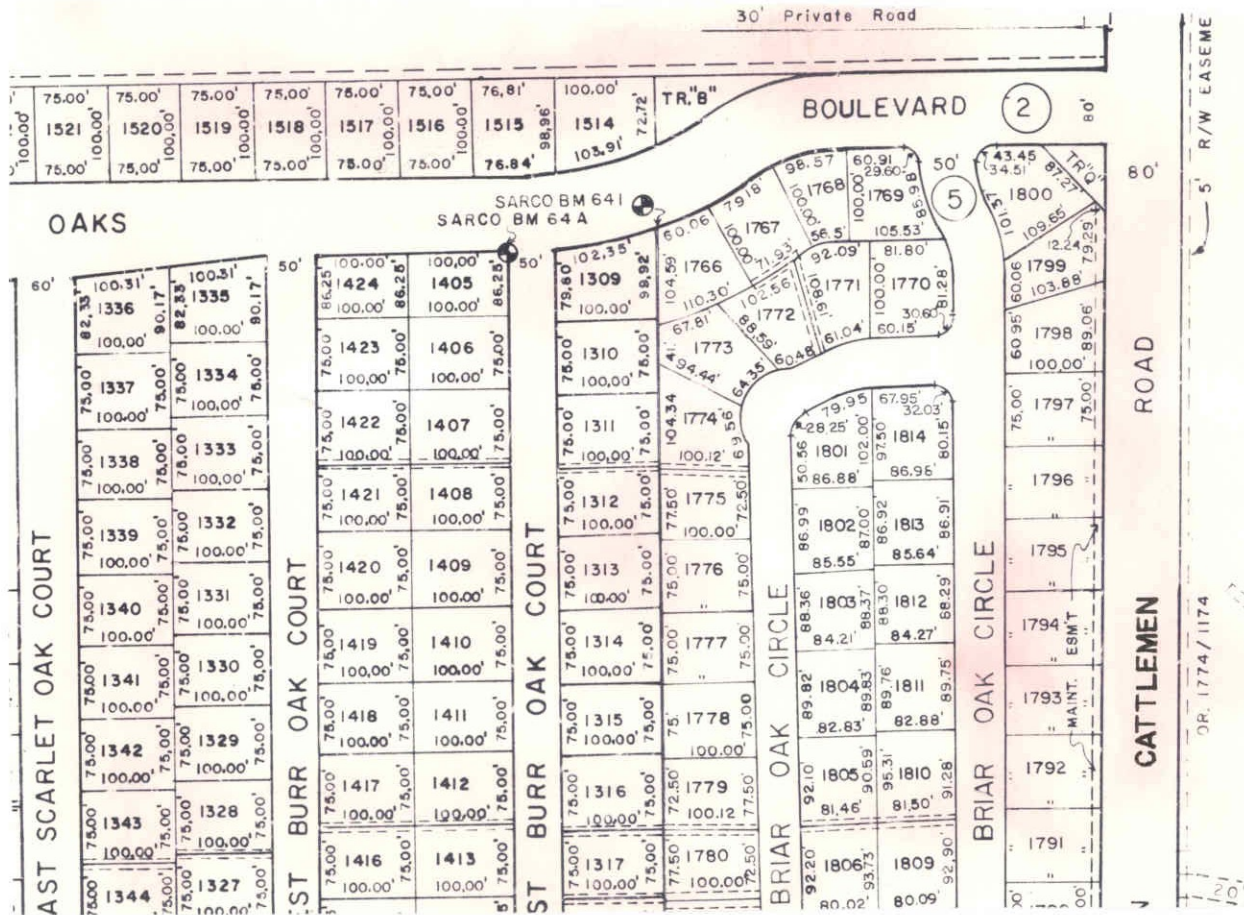


SARASOTA COUNTY  
TRANSPORTATION DEPARTMENT  
ENGINEERING DIVISION

BENCH MARK DATA SHEET		ELEV.
		29.04'
DATE DRAWN: 10-5-87		BY: RJJ
REF: F.B.	PG.	DATE
ELEV. BASED ON B.M. NO.		64H

DATE	TYPE	F.B. PG.	BY
REVISIONS			





COLONIAL OAKS UNIT 26 PB 32/43

SARASOTA COUNTY TRANSPORTATION DEPARTMENT ENGINEERING DIVISION			
BENCH MARK DATA SHEET			ELEV.
			26.79
DATE DRAWN: 10/7/88		BY: SCB	
REF: F.B.	PG.	DATE	
ELEV. BASED ON B.M. NO. NGVD1929 BM64			64 I

DATE	TYPE	F.B. PG.	BY
REVISIONS			