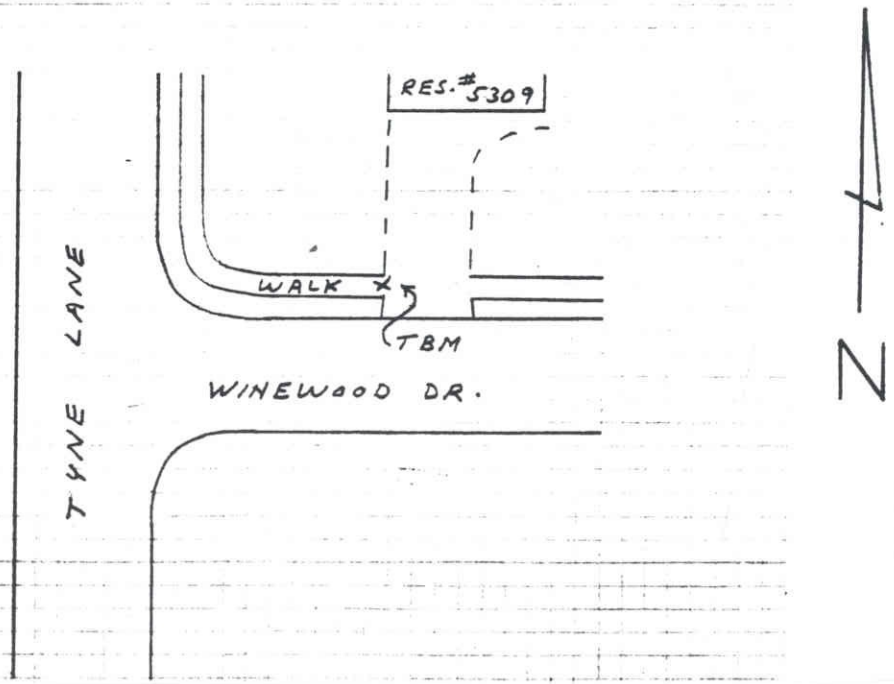
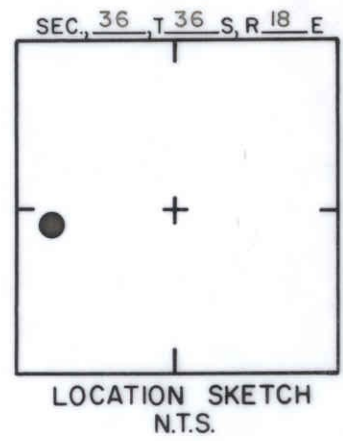
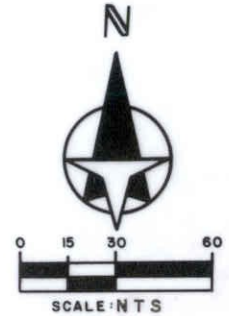


TO REACH THE MARK FROM INTER. TYNE LANE & WINEWOOD DR., TBM IS CUT SQ. W. EDGE DR. CL WALK

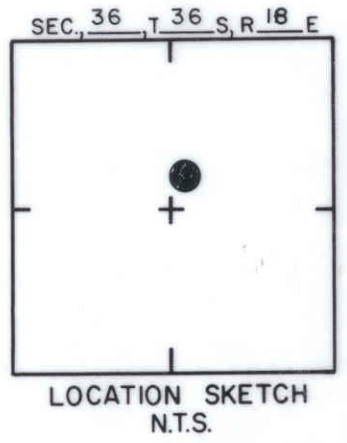
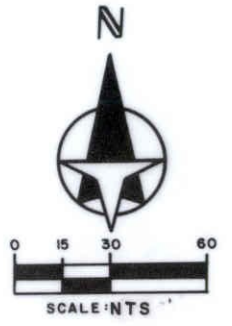
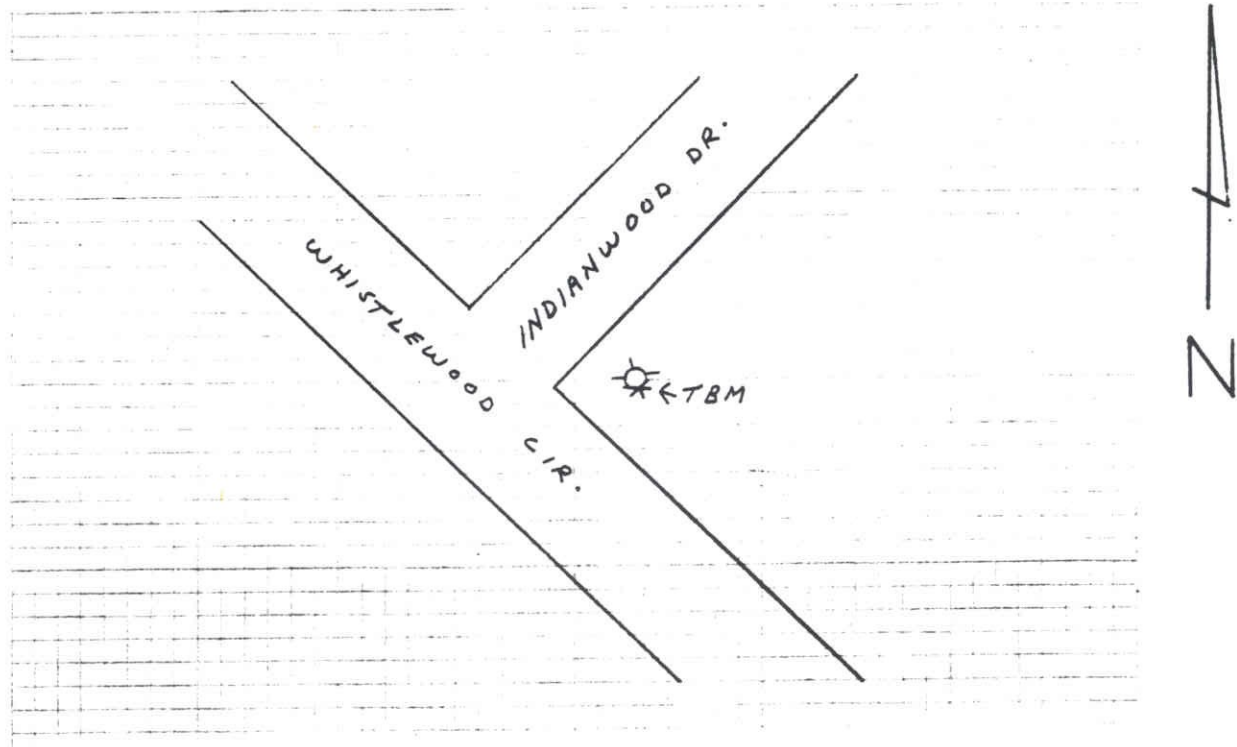


**SARASOTA COUNTY**  
TRANSPORTATION DEPARTMENT  
ENGINEERING DIVISION

				<b>BENCH MARK DATA SHEET</b>		ELEV.
						21.34
				DATE DRAWN: 1-29-87	BY: RJJ	BM. NO.
				REF: SWFWMD HFH150	DATE 10/81	65C
<b>REVISIONS</b>				ELEV. BASED ON B.M. NO. NOS		

DATE	TYPE	FB. PG.	BY
REVISIONS			

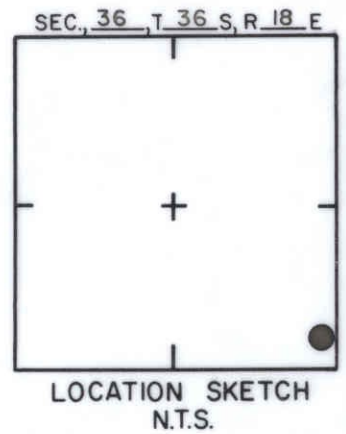
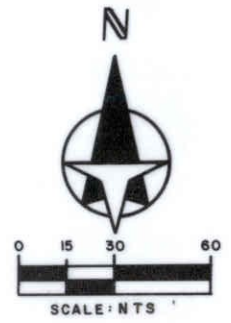
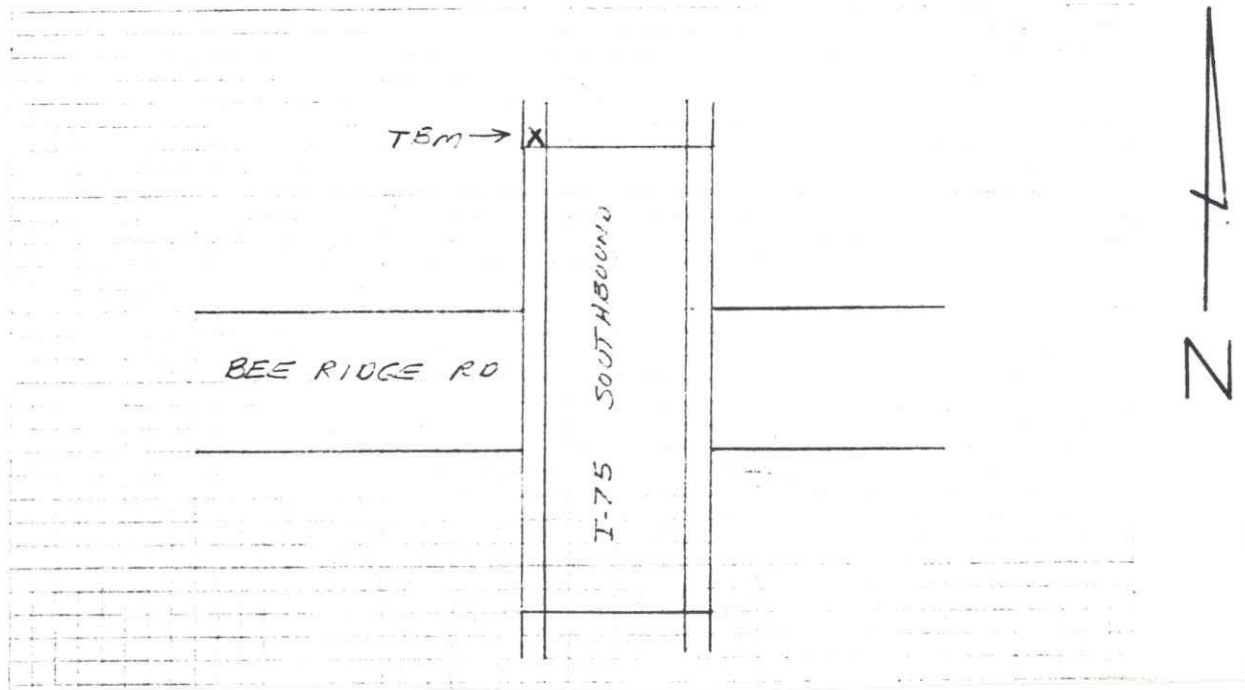
TO REACH THE MARK FROM INTER. WHISTLEWOOD CIR. &  
 INDIANWOOD DR., TBM IS A CUT CROSS ON E. BOLT  
 OF FIREHYDRANT



**SARASOTA COUNTY**  
 TRANSPORTATION DEPARTMENT  
 ENGINEERING DIVISION

				<b>BENCH MARK DATA SHEET</b>		ELEV.
						22.62
				DATE DRAWN: 1-28-87	BY: RJJ	BM. NO.
				REF: SWFWMD HFH 148	DATE 10/81	65D
<b>REVISIONS</b>				ELEV. BASED ON BM. NO. NOS		

TO REACH THE MARK FROM AT BEE RIDGE RD & I-75;  
 TEM IS D.O.T. BRASS CAP SET ON NW END  
 OF CONC BRIDGE RAIL



**SARASOTA COUNTY**  
 TRANSPORTATION DEPARTMENT  
 ENGINEERING DIVISION

<b>BENCH MARK DATA SHEET</b>		ELEV.
		51.49
DATE DRAWN: 1-29-87 BY: RJJ		BM. NO.
REF: SWFWMD HFH 156 DATE 10/81		65E
ELEV. BASED ON B.M. NO. NOS		

DATE	TYPE	FB. PG.	BY
REVISIONS			