

**SARASOTA COUNTY**  
TRANSPORTATION DEPARTMENT  
ENGINEERING DIVISION

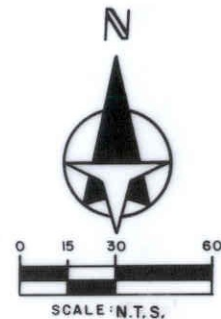
|                                  |  |         |
|----------------------------------|--|---------|
| <b>BENCH MARK<br/>DATA SHEET</b> |  | ELEV.   |
|                                  |  | 34.866' |
| DATE DRAWN: 8-6-90 BY: KLP       |  | BM. NO. |
| REF: F.B. 319 PG. 28 DATE 6-90   |  | 70-E    |
| ELEV. BASED ON BM. NO. R-70      |  |         |

|                  |      |          |    |
|------------------|------|----------|----|
| DATE             | TYPE | F.B. PG. | BY |
| <b>REVISIONS</b> |      |          |    |

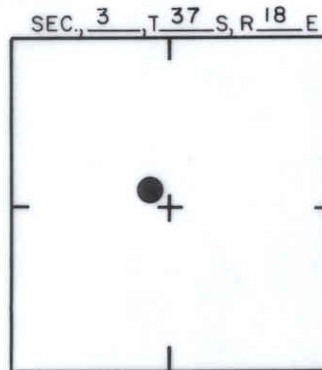
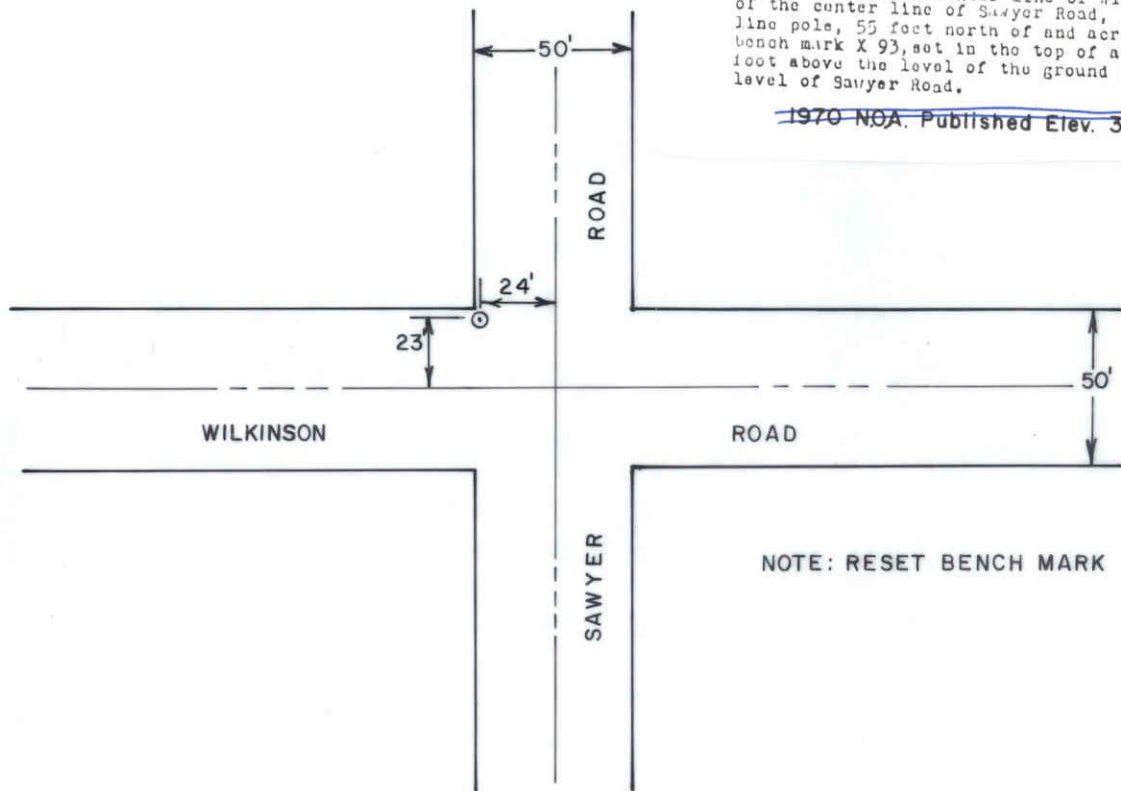
~~Elev. 36.289'~~

DESCRIPTION OF BENCH MARK

Designation **70(3.County) Reset** State Florida County Sarasota  
 Nearest town Sarasota County Sarasota Chief of party R. Corriah  
 Distance and direction from nearest town 6.0 miles southeast Leveling date 1/66  
 Character of mark A Sarasota County Disk Stamping 36.25  
 Established by Sarasota County  
 Detailed description 5.75 miles southeast along the Seaboard Air Line Railroad from the station at Sarasota, thence about 0.25 mile west along Wilkinson Road, near the intersection of Sawyer Road, 23.0 feet north of the center line of Wilkinson Road, 22.8 feet west of the center line of Sawyer Road, 3 feet northeast of a power line pole, 55 feet north of and across Wilkinson Road from bench mark X 93, set in the top of a concrete post projecting 0.6 foot above the level of the ground and about 1/2 foot above the level of Sawyer Road.



~~1970 NOA. Published Elev. 36.289'~~ **Reset**



LOCATION SKETCH  
N.T.S.

SARASOTA COUNTY  
TRANSPORTATION DEPARTMENT  
ENGINEERING DIVISION

BENCH MARK  
DATA SHEET

ELEV.

36.44'

BM. NO.

R-70

DATE DRAWN: NOV 1989

BY: RJJ

REF: F.B. 317

PG. 1

DATE 10-17-89

DATE

TYPE

F.B. PG.

BY

REVISIONS

ELEV. BASED ON B.M. NO. BM 89B