

LOCATION SKETCH
N.T.S.

SARASOTA COUNTY
TRANSPORTATION DEPARTMENT
 ENGINEERING DIVISION

**BENCH MARK
 DATA SHEET**

ELEV.

29.55

BM. NO.

71 A

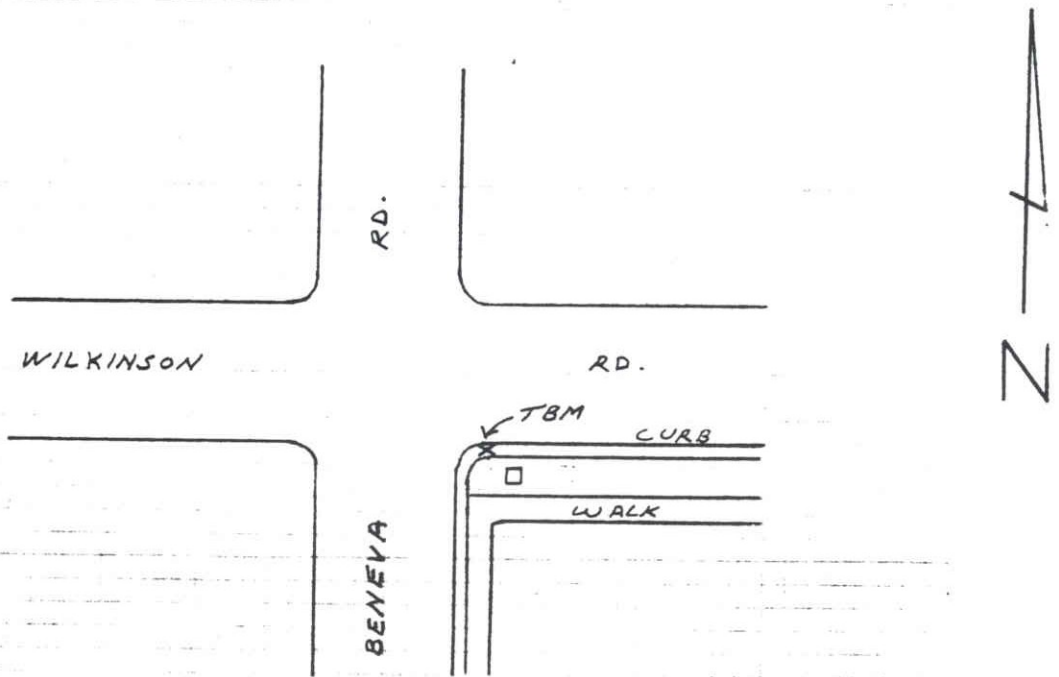
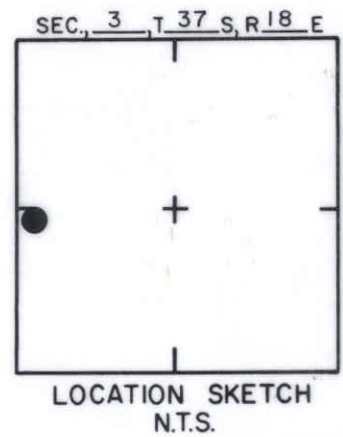
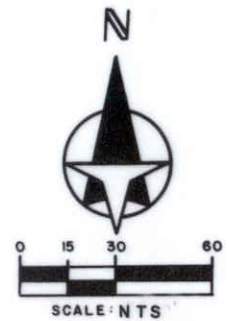
DATE DRAWN: 7-18-83 BY: DBP

REF: F.B. 253 PG. 37-43, 80 DATE 2-1-83

ELEV. BASED ON B.M. NO. SARCO R-71

DATE	TYPE	F.B. PG.	BY
REVISIONS			

TO REACH THE MARK FROM INTER. WILKINSON RD. & BENEVA RD.,
TBM IS A CUT SQ. ON CURB OPP. CONCRETE POLE



SARASOTA COUNTY
TRANSPORTATION DEPARTMENT
ENGINEERING DIVISION

BENCH MARK
DATA SHEET

ELEV.

32.43'

BM. NO.

71B

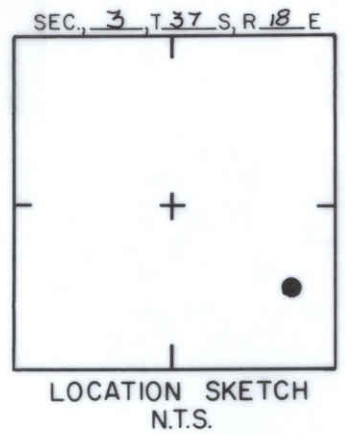
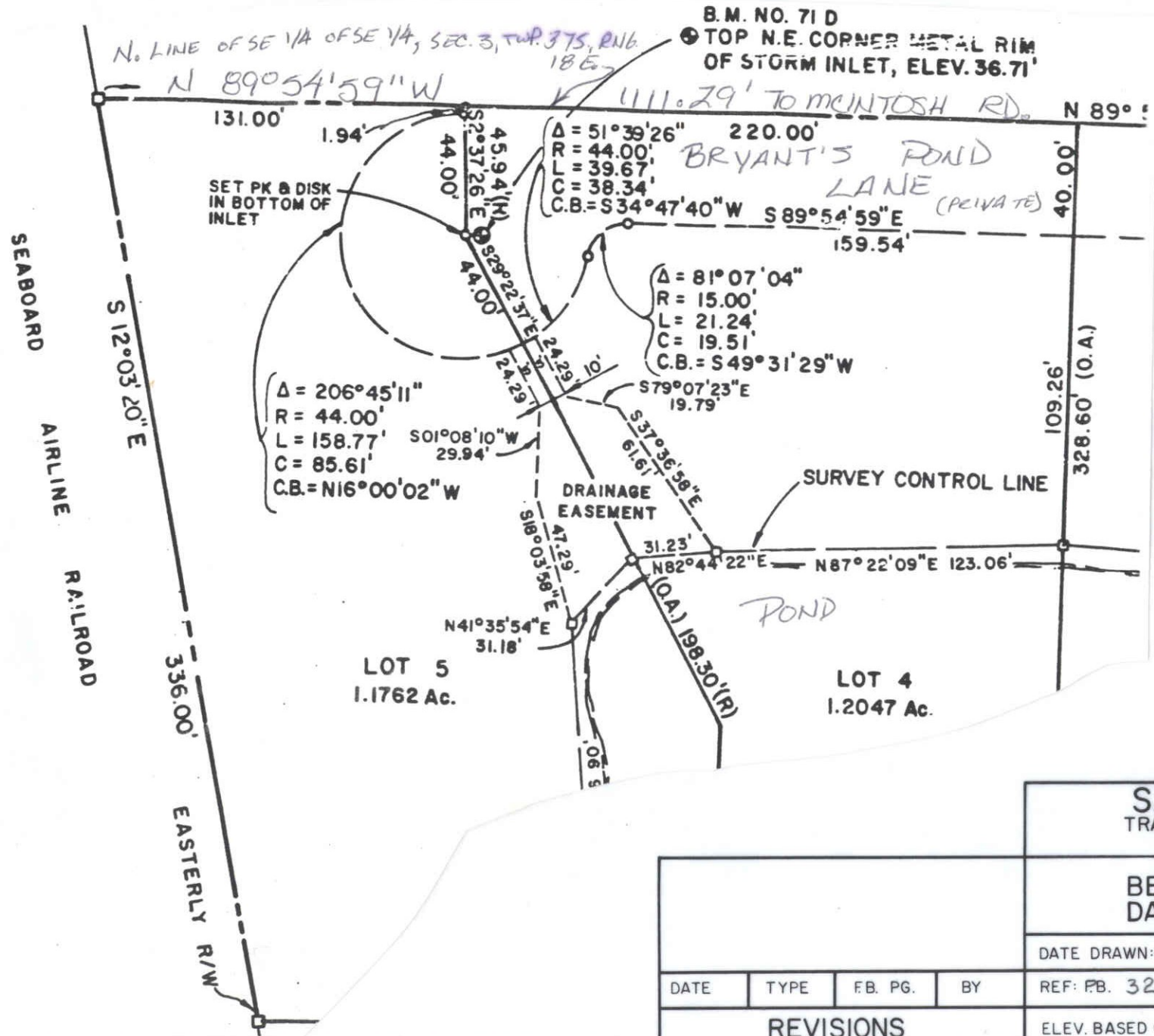
DATE DRAWN: 1-20-87 BY: RJJ

REF: SWFWMD HFH 108 DATE 10/81

ELEV. BASED ON B.M. NO. NOS

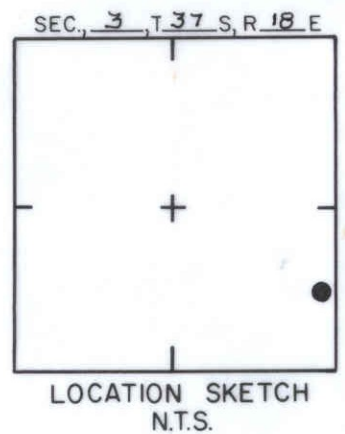
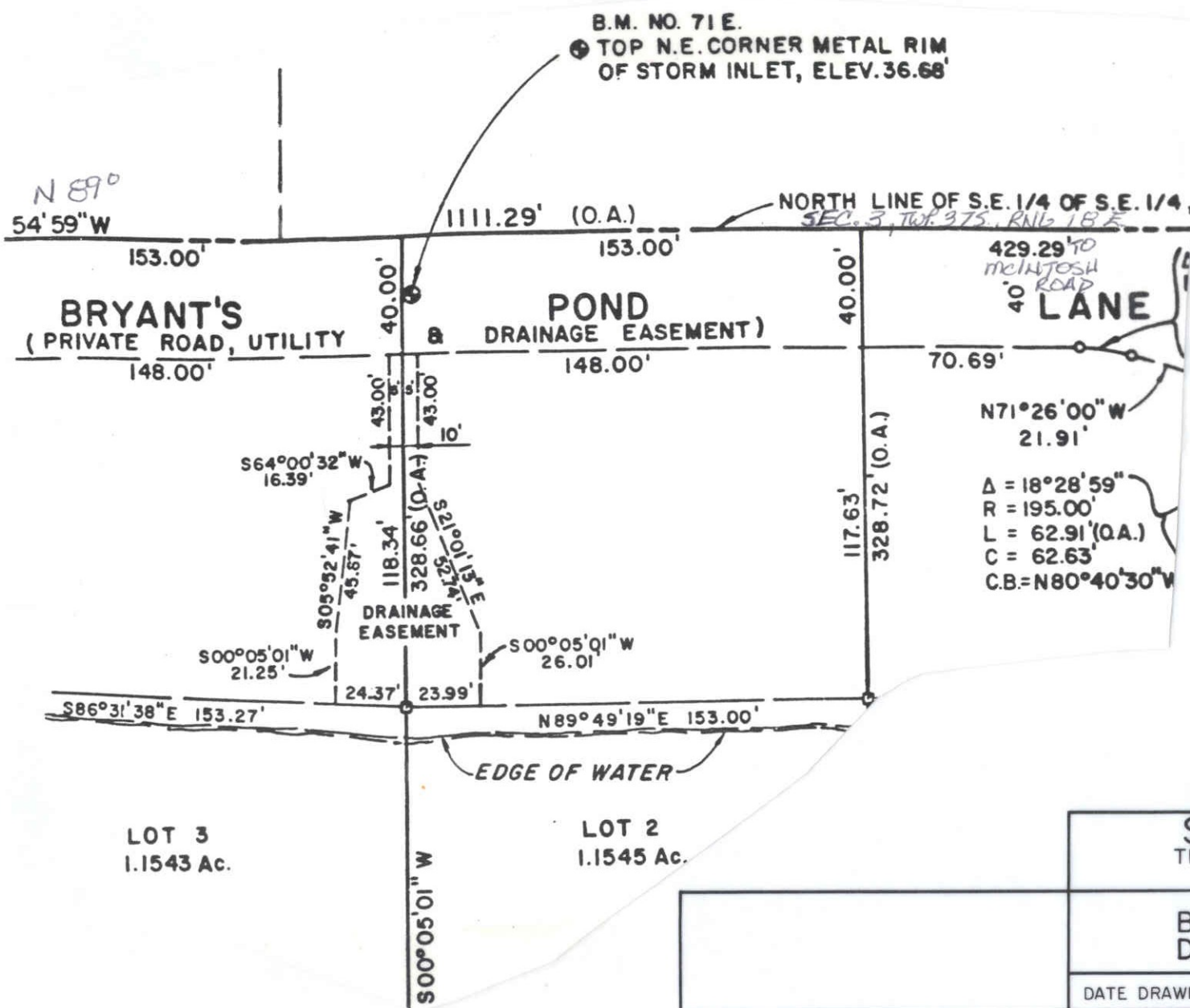
DATE TYPE FB. PG. BY

REVISIONS



SARASOTA COUNTY			
TRANSPORTATION DEPARTMENT			
ENGINEERING DIVISION			
BENCH MARK DATA SHEET			ELEV.
DATE DRAWN: 11-16-88 BY: 846			36.71'
REF: PB. 32 PG. 46 DATE			BM. NO.
ELEV. BASED ON BM. NO.			71 D

DATE	TYPE	F.B. PG.	BY
REVISIONS			



LOT 3
1.1543 Ac.

LOT 2
1.1545 Ac.

SARASOTA COUNTY
TRANSPORTATION DEPARTMENT
ENGINEERING DIVISION

**BENCH MARK
DATA SHEET**

ELEV.
36.68'

DATE DRAWN: 11-16-88 BY: BAG

BM. NO.

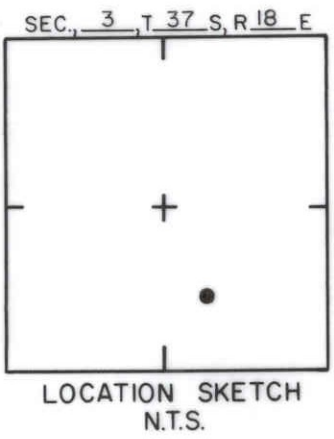
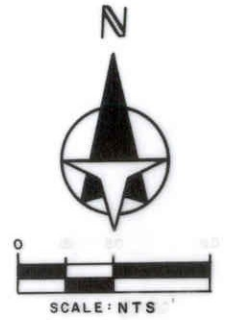
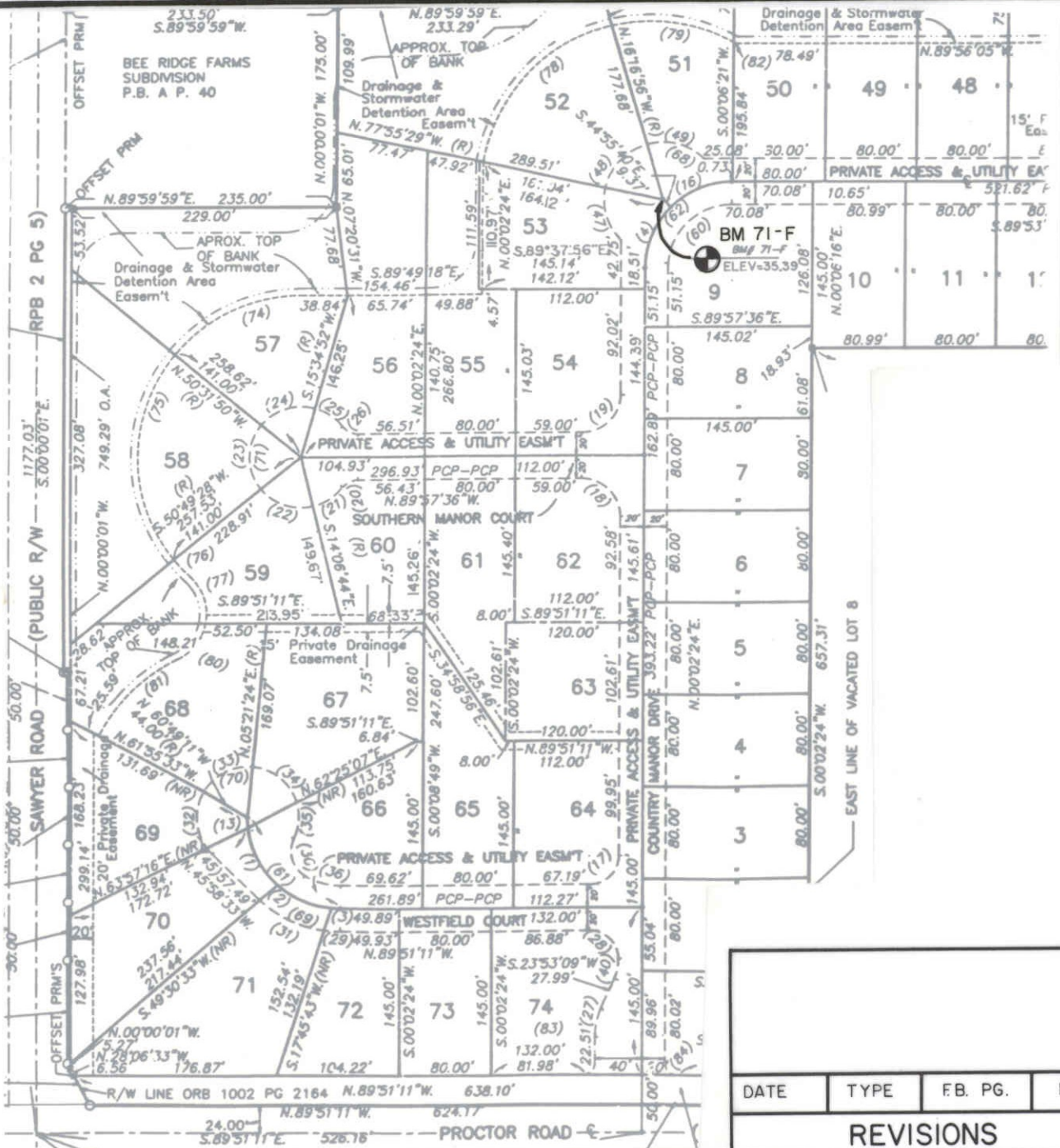
DATE	TYPE	F.B. PG.	BY
------	------	----------	----

REF: F.B. PG. DATE

REVISIONS

ELEV. BASED ON B.M. NO.

71E



COUNTRY MANOR, UNIT I P.B. 33/37

SARASOTA COUNTY
TRANSPORTATION DEPARTMENT
ENGINEERING DIVISION

**BENCH MARK
DATA SHEET**

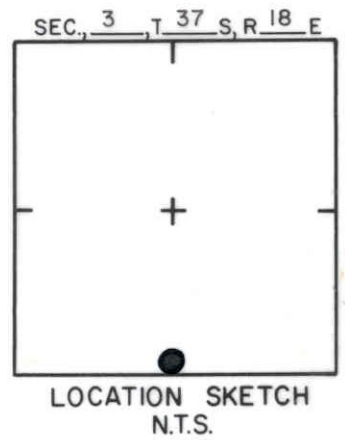
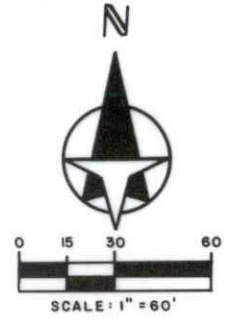
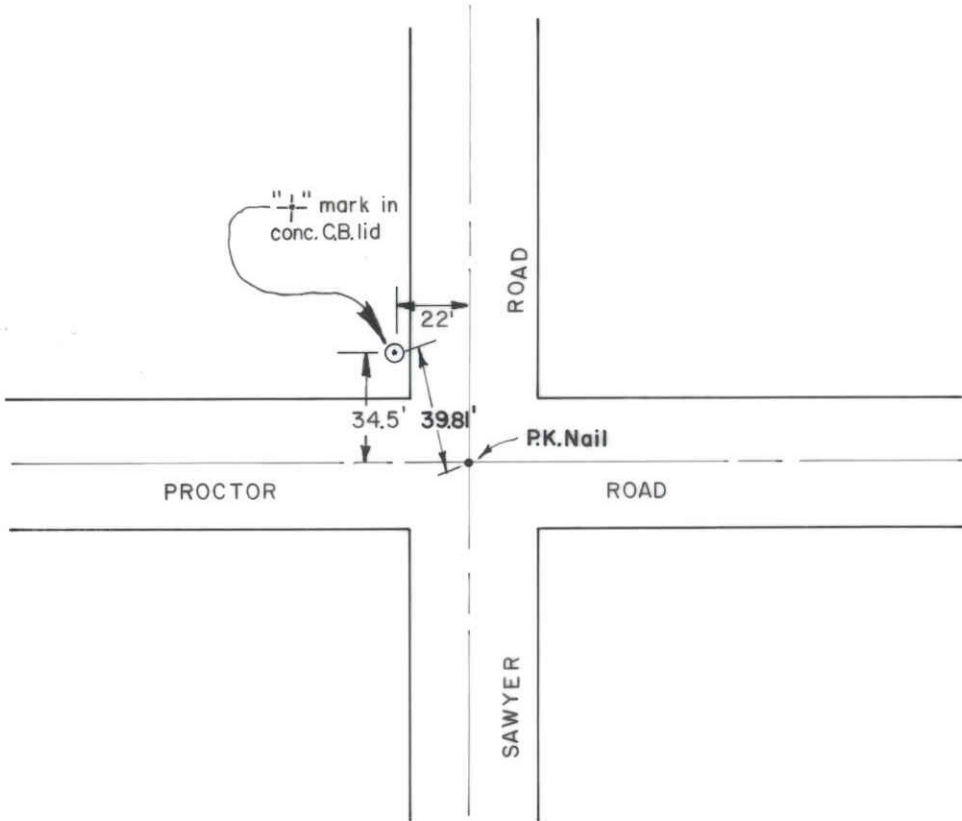
ELEV.
35.39'
BM. NO.
71-F

DATE DRAWN: 11-15-89 BY: KLP

SET BY: MINDER & RHODES ENG. CORP.

ELEV. BASED ON BM. NO. R-71

DATE	TYPE	F.B. PG.	BY
REVISIONS			



SARASOTA COUNTY
TRANSPORTATION DEPARTMENT
ENGINEERING DIVISION

**BENCH MARK
DATA SHEET**

ELEV.

31.93

BM. NO.

R-71

DATE DRAWN: JUNE 1983 BY: DBP

DATE TYPE F.B. PG. BY REF: F.B. 253 PG. 24-7 DATE 1-6-83

ELEV. BASED ON B.M. NO. USG&CS T-252

REVISIONS