

SARASOTA COUNTY
TRANSPORTATION DEPARTMENT
ENGINEERING DIVISION

**BENCH MARK
DATA SHEET**

ELEV.

24.62

BM. NO.

74 A

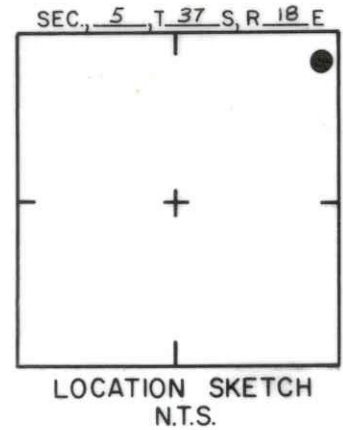
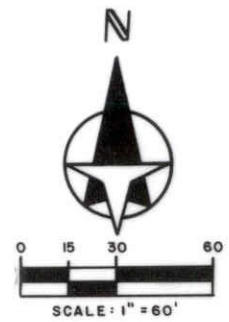
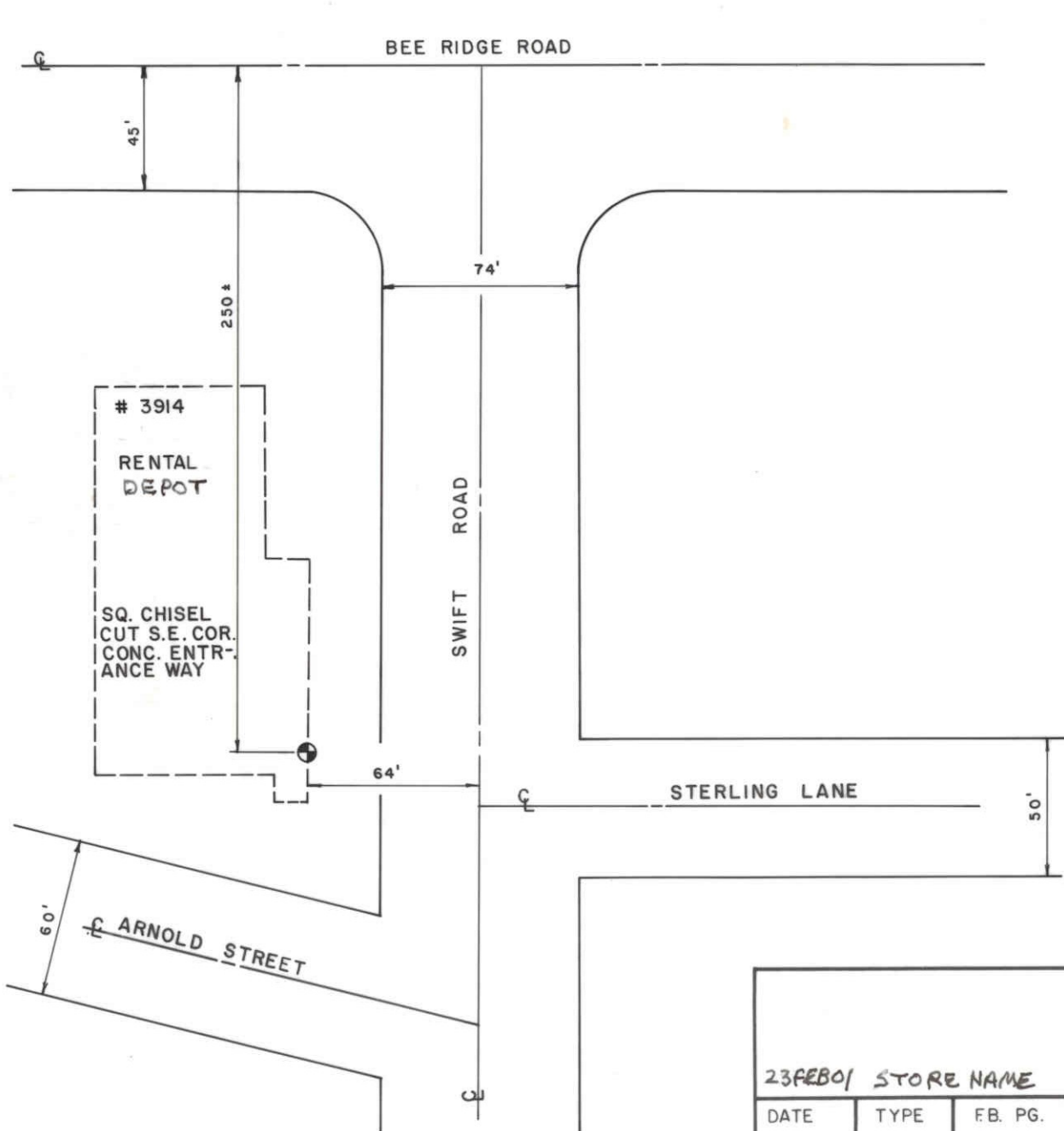
DATE DRAWN: JUNE 1983 BY:

REF: F.B. BM PG. 74 A DATE ?

ELEV. BASED ON B.M. NO. ?

DATE	TYPE	F.B. PG.	BY
REVISIONS			

REVISIONS



SARASOTA COUNTY
 TRANSPORTATION DEPARTMENT
 ENGINEERING DIVISION

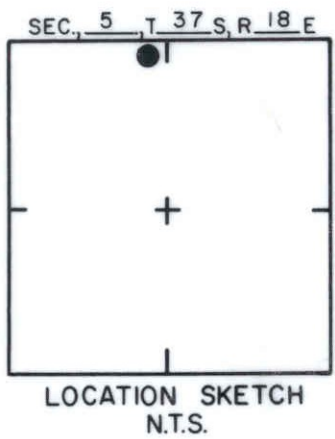
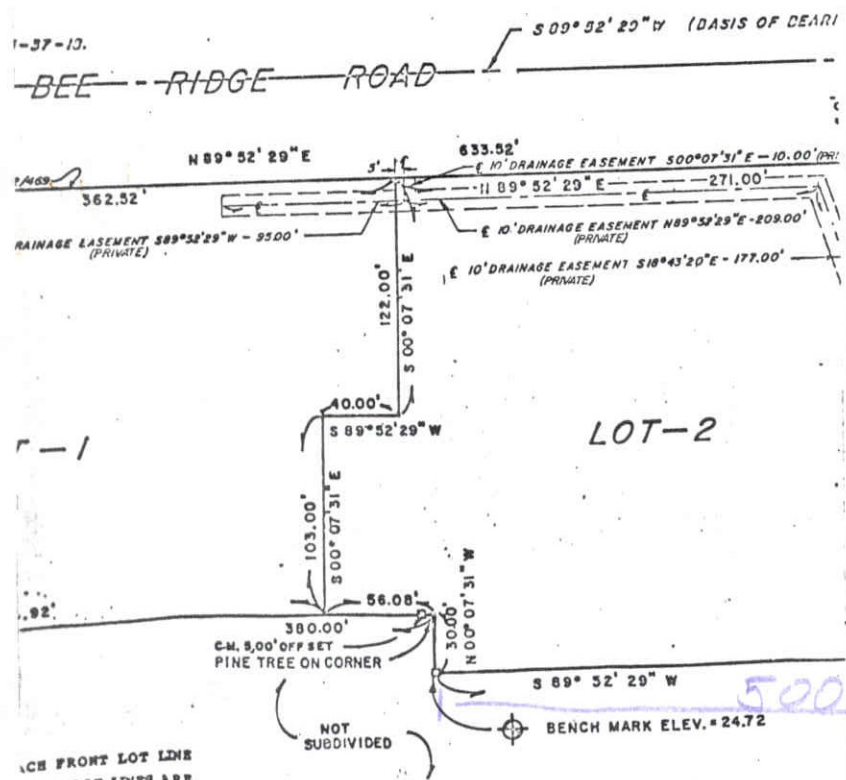
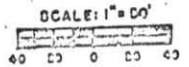
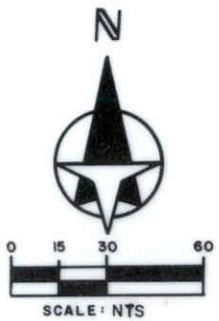
BENCH MARK DATA SHEET		ELEV.
		18.58'
DATE DRAWN: 12-31-84 BY: KLH		BM. NO.
REF: F.B.	PG.	DATE
ELEV. BASED ON B.M. NO. SWN Datum		74D

23FEB01 STORE NAME NLS

DATE	TYPE	F.B. PG.	BY
REVISIONS			

THE COLONNADE SUBDIVISION

Section 5, Township 37 South, Range 18 East,
Sarasota County, Florida.



THE FRONT LOT LINE
REAR LOT LINES ARE
THE PURPOSE OF
GROUND UTILITIES AND
A LOT IS USED AS A

NOTES
1. ELEVATIONS REFER TO SARASOTA COUNTY DATUM. BENCH
ELEVATION 24.72

SARASOTA COUNTY
TRANSPORTATION DEPARTMENT
ENGINEERING DIVISION

BENCH MARK DATA SHEET

ELEV.

24.72'

BM. NO.

74 E

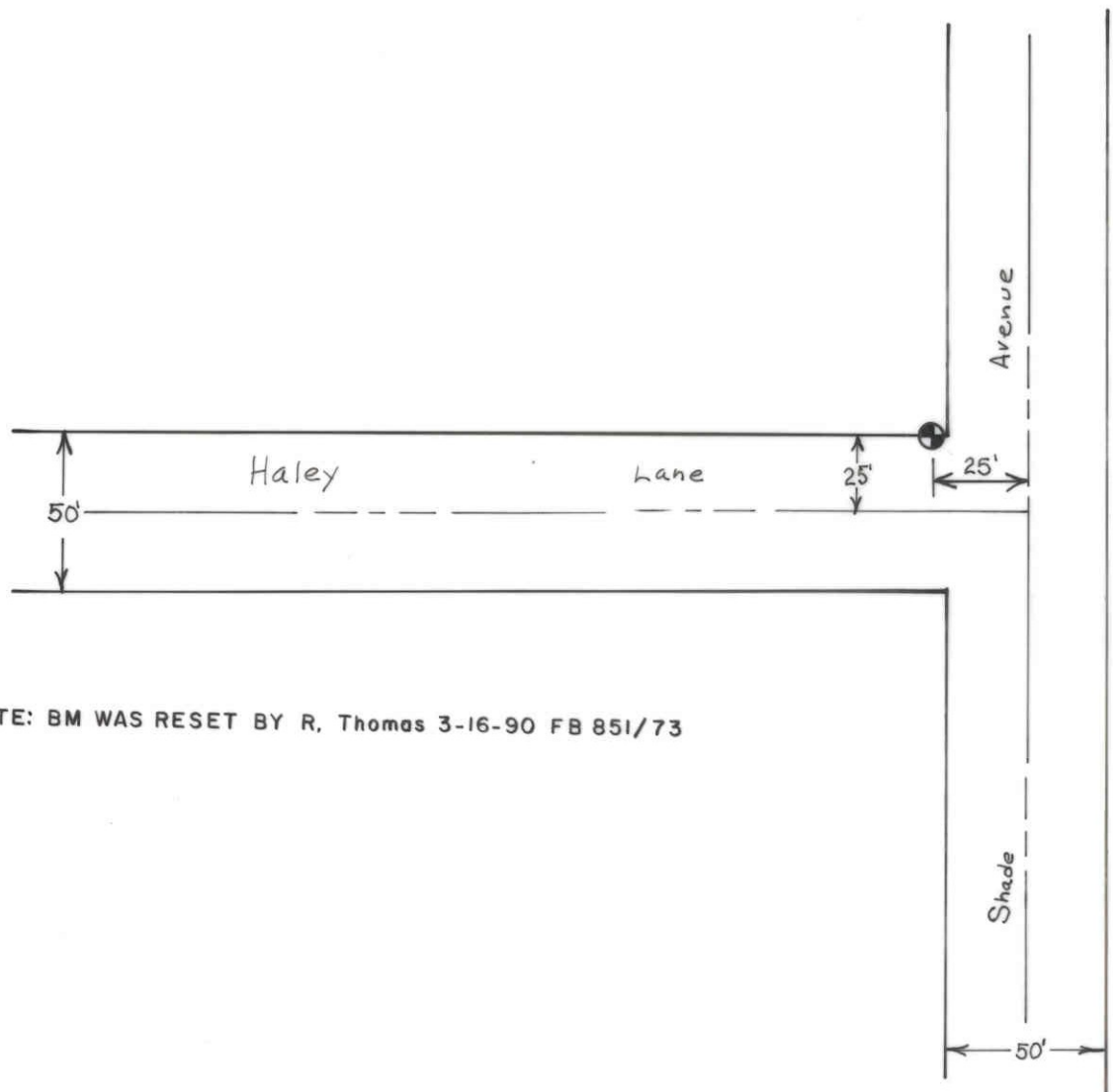
DATE DRAWN: 3/11/86 BY: RJJ

REF: FB. 30 PG. 49 DATE

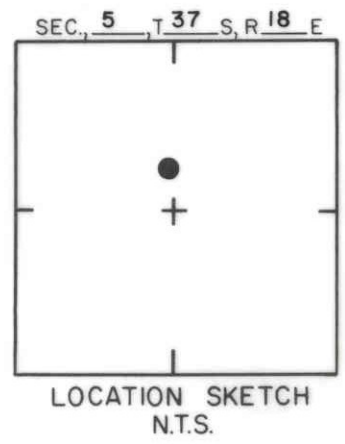
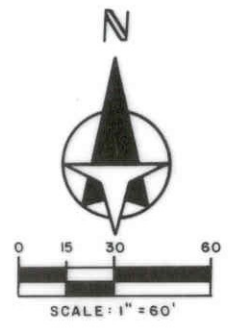
ELEV. BASED ON B.M. NO. BM 74

DATE	TYPE	FB. PG.	BY

REVISIONS



NOTE: BM WAS RESET BY R, Thomas 3-16-90 FB 851/73



SARASOTA COUNTY
 TRANSPORTATION DEPARTMENT
 ENGINEERING DIVISION

**BENCH MARK
 DATA SHEET**

ELEV.
21.80'
 BM. NO.
R-74

FB 851
4-17-97 REV. ELEV. PG 73 MLS

DATE DRAWN: **MAR 1990** BY: **RJJ**

REF: F.B. **RT 851** PG. **73** DATE **3-13-90**

REVISIONS

ELEV. BASED ON BM. NO. 74 A