

SARASOTA COUNTY
 TRANSPORTATION DEPARTMENT
 ENGINEERING DIVISION

BENCH MARK DATA SHEET

ELEV.
 24.94'
 BM. NO.
 75C

DATE DRAWN: 12-20-84 BY: R J

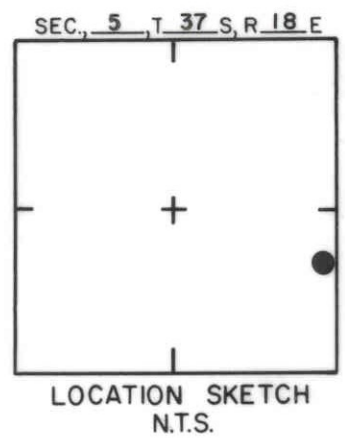
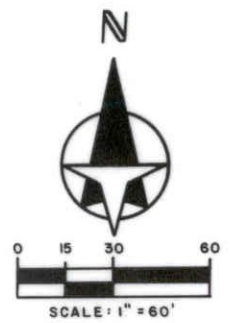
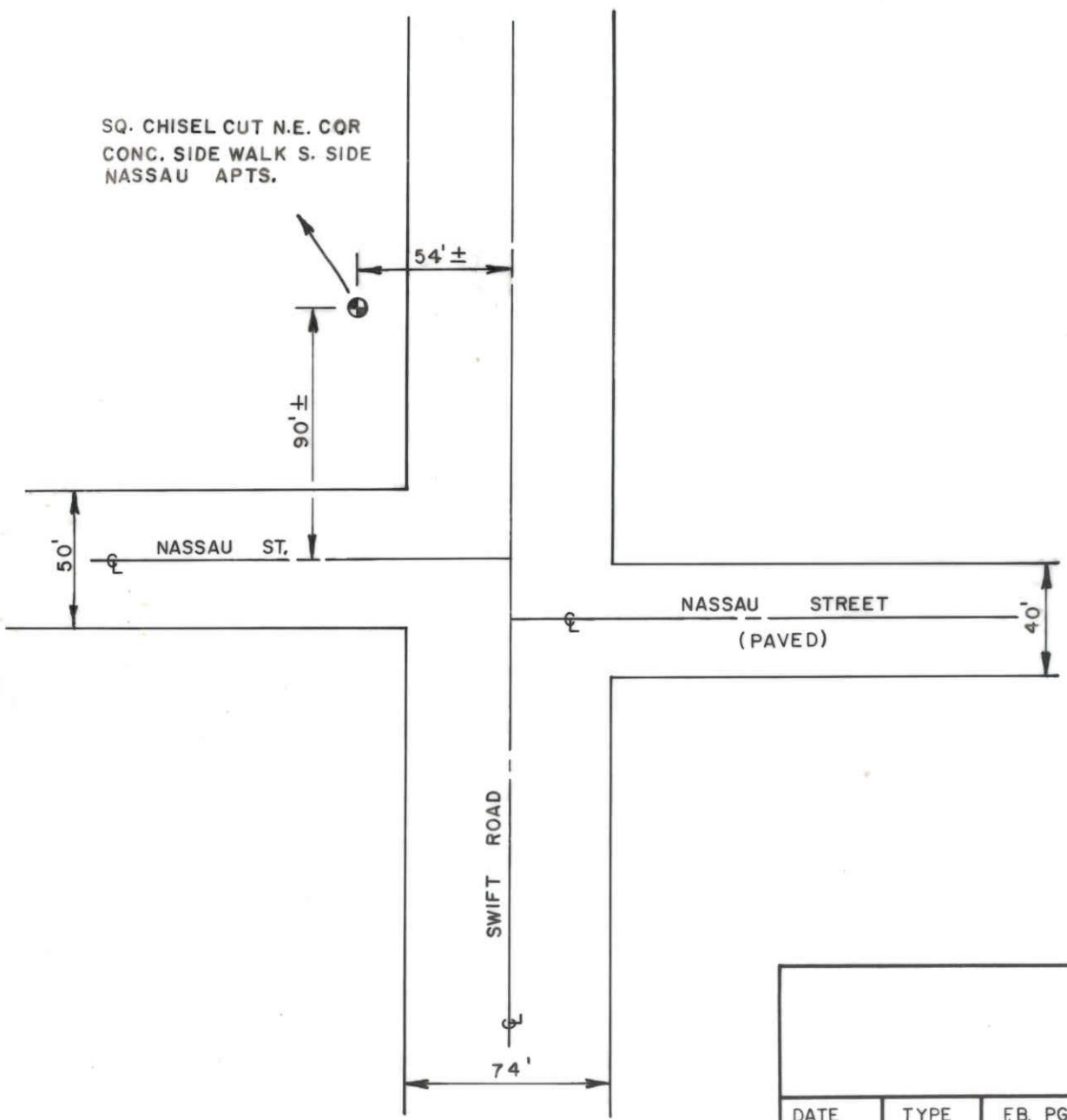
REF: F.B. PG. DATE

ELEV. BASED ON B.M. NO. D.O.T.

DATE	TYPE	F.B. PG.	BY
------	------	----------	----

REVISIONS

16



18

SARASOTA COUNTY
TRANSPORTATION DEPARTMENT
ENGINEERING DIVISION

**BENCH MARK
DATA SHEET**

ELEV.

24.12

BM. NO.

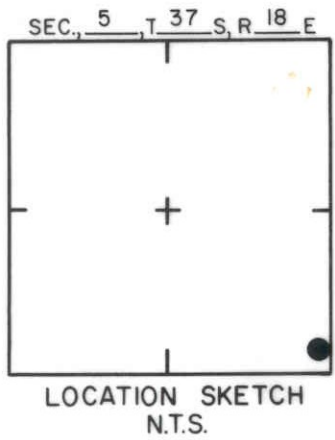
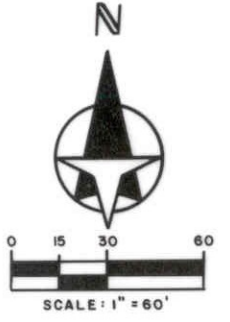
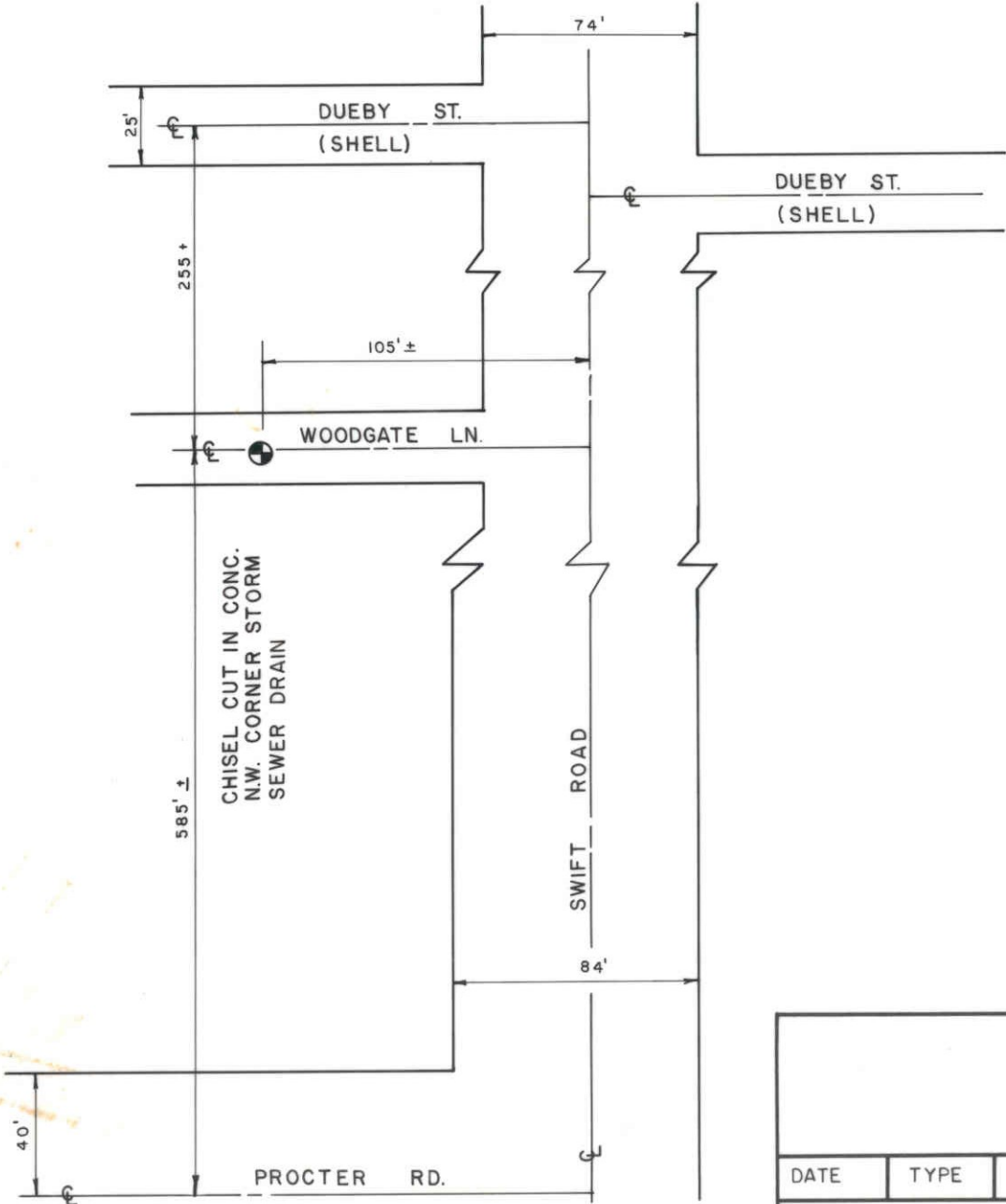
75 D

DATE DRAWN: 12-21-84 BY: RJ

REF: F.B. PG. DATE

ELEV. BASED ON B.M. NO. D.O.T.

DATE	TYPE	F.B. PG.	BY
REVISIONS			



SARASOTA COUNTY
 TRANSPORTATION DEPARTMENT
 ENGINEERING DIVISION

BENCH MARK DATA SHEET

ELEV.

25.14'

BM. NO.

75 E

DATE DRAWN: 12/20/84 BY: KLH

REF: F.B. PG. DATE

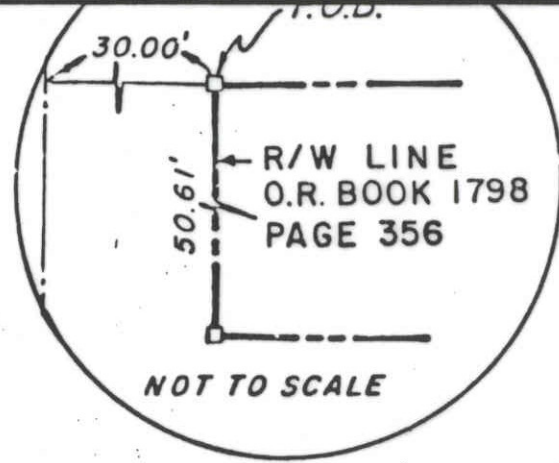
ELEV. BASED ON B.M. NO. D.O.T.

DATE	TYPE	F.B. PG.	BY
REVISIONS			

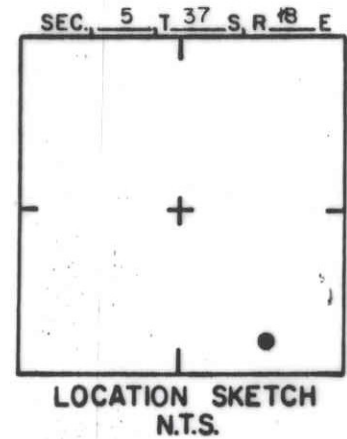
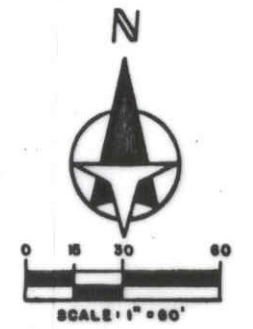
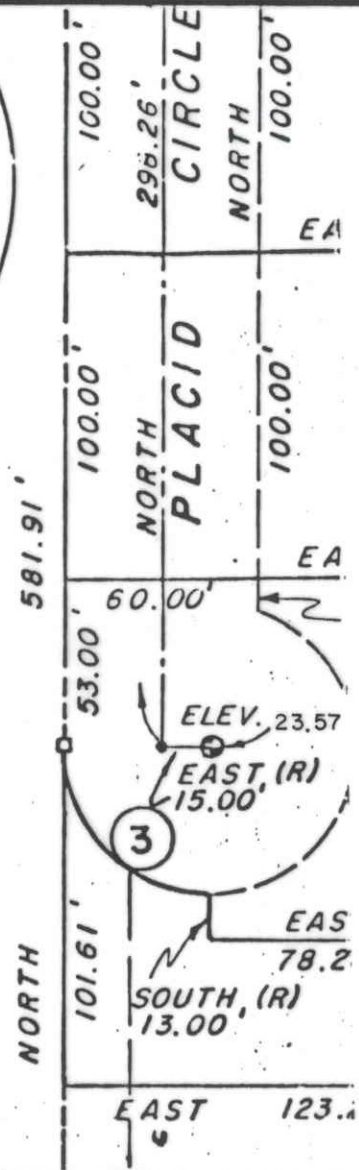
LANCASTER SUBDIVISION
(P.B. 28 , PG. 28)

SESAME ACRES, A
(P.B. 23 , PG. 1)

NORTH 672.37' W LINE SE 1/4 OF SE 1/4 5-37
ORDS
OCCUPIED R/W LINE
AVENUE



LAND NOT SUBDIVIDED



SARASOTA COUNTY
TRANSPORTATION DEPARTMENT
ENGINEERING DIVISION

FND PK NAIL & DISK MARKED
(P.L. S. 1821 BM)
OFF 4.84' FROM RECORDED
ELEV. OF 18.73
SEE FB 377/77-78

BENCH MARK DATA SHEET		ELEV.
		23.57
DATE DRAWN: 9/85	BY: PJB	BM. NO.
REF: PB. 30	PG. 33-33B	DATE 9/85
		75F

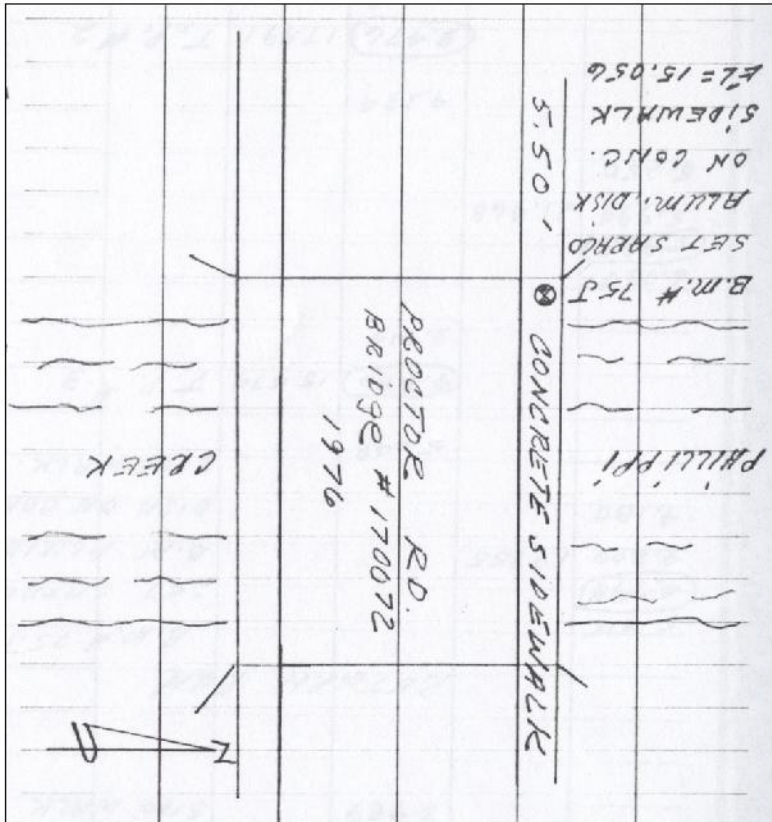
DATE	TYPE	FB. PG.	BY
12-94			JFJ

REVISIONS

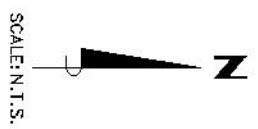
ELEV. BASED ON BM. NO. SARCO 75B

B.M. # 75J
 SET SPREAD
 ALUM. DISK
 ON CONC.
 SIDEWALK
 ELEV. 15.056
 5.50' CONCRETE SIDEWALK

PROCTOR RD.
 BRIDGE # 170072
 1976

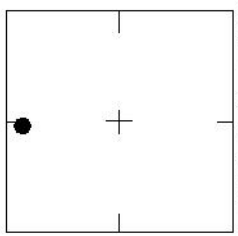


WGS 84	Lot: °	REVISIONS / REMARKS
Lon: °		
FL W. N.		
83 E.		
SET BY:		



SCALE: N.T.S.

SEC.: 5, T. 37, S. R. 18, E



LOCATION SKETCH
N.T.S.

SARASOTA COUNTY
 Geomatics Service Center
 SURVEY/MAPPING SECTION

BENCH MARK
 DATA SHEET

DATE DRAWN: 12-01-04	BY: JRM	ELEV. 15.056'
REF.: 372	PG. 55	DATE: 1-13-98
ELEV. BASED ON B.M. NO. 238		B.M. NO. 75-J