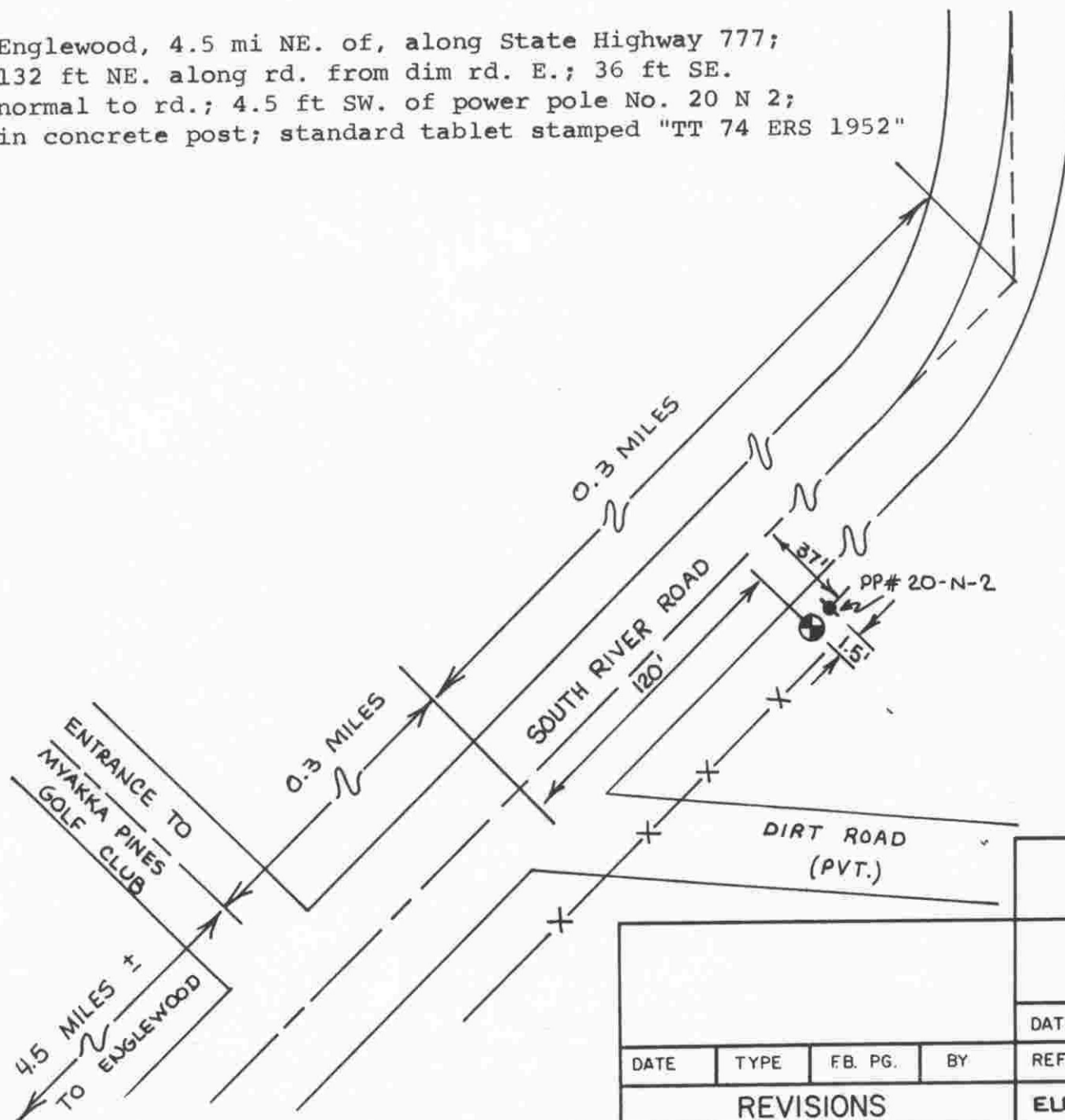
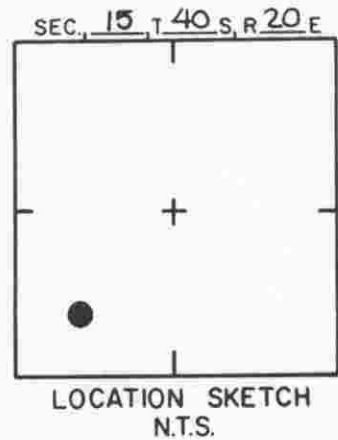
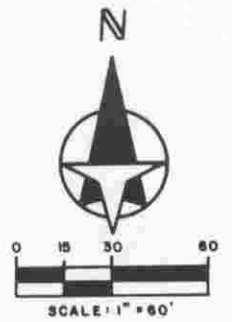


Englewood, 4.5 mi NE. of, along State Highway 777;  
 132 ft NE. along rd. from dim rd. E.; 36 ft SE.  
 normal to rd.; 4.5 ft SW. of power pole No. 20 N 2;  
 in concrete post; standard tablet stamped "TT 74 ERS 1952"



**SARASOTA COUNTY**  
 TRANSPORTATION DEPARTMENT  
 ENGINEERING DIVISION

**BENCH MARK  
 DATA SHEET**

ELEV.

13.429'

DATE DRAWN: 10/29/84 BY: SH

BM. NO.

REF: FB. 259 PG. 21 DATE 3/9/84

822

| DATE      | TYPE | FB. PG. | BY |
|-----------|------|---------|----|
| REVISIONS |      |         |    |

ELEV. EST. BY NOS