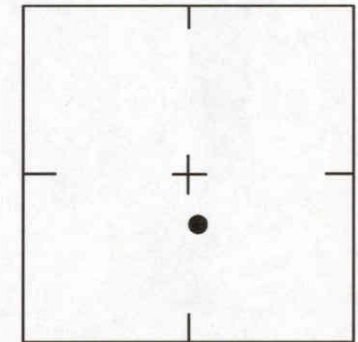


SCALE: N.T.S.

SEC., 9 , T 37 S, R 18 E



LOCATION SKETCH  
N.T.S.

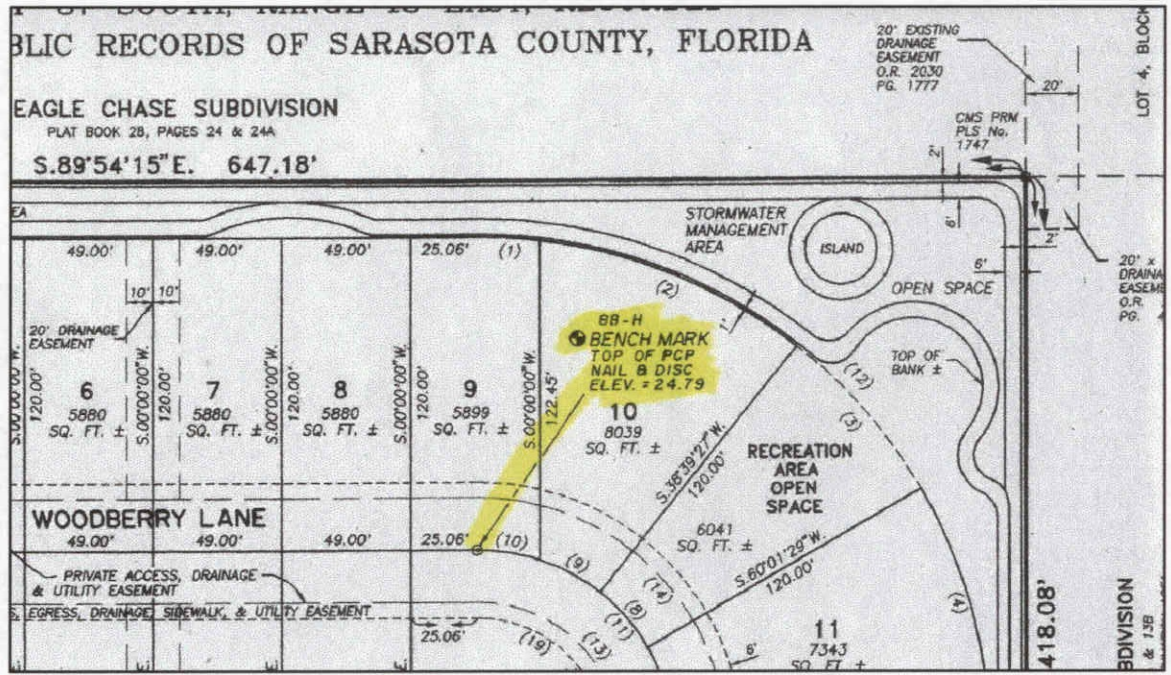
ASHLEY OAKS  
PB 38, PG 5 A

SARASOTA COUNTY DEVELOPMENT SERVICES BUSINESS CENTER GEOMATICS, SURVEY/MAPPING SECTION	
<b>REVISIONS / REMARKS</b>    SET BY: DARRELL E. GERKEN	<b>BENCH MARK DATA SHEET</b>
	DATE DRAWN: 07/01/03 BY: MLS
	REF: PB 38 PG 5A DATE: 4/24/96
	ELEV. BASED ON B.M. NO. SARCO R88-B
	ELEV. <b>25.18'</b> B.M. NO. <b>88 F</b>



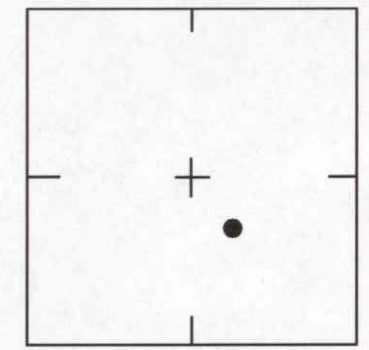






SCALE: N.T.S.

SEC., 9 , T 37 S, R 18 E



LOCATION SKETCH  
N.T.S.

ASHLEY OAKS  
PB 38, PG 5 A

REVISIONS / REMARKS		SARASOTA COUNTY DEVELOPMENT SERVICES BUSINESS CENTER GEOMATICS, SURVEY/MAPPING SECTION	
		BENCH MARK DATA SHEET	
		DATE DRAWN: 07/01/03 BY: MLS	
		REF: PB 38 PG 5A DATE: 4/24/96	
SET BY: DARRELL E. GERKEN		ELEV.	24.79'
		B.M. NO.	88 H
		ELEV. BASED ON B.M. NO. SARCO R88-B	