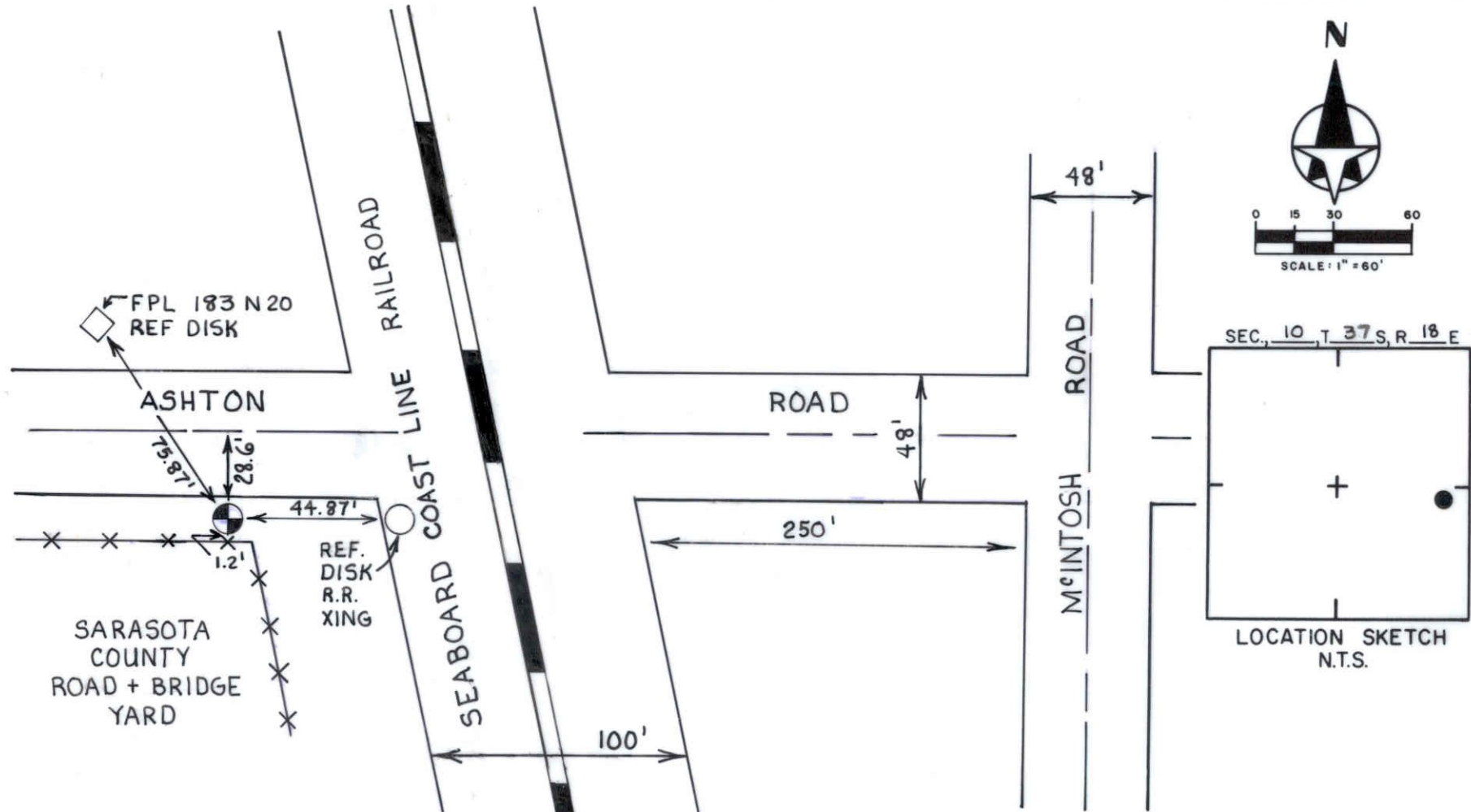


**SARASOTA COUNTY**  
TRANSPORTATION DEPARTMENT  
ENGINEERING DIVISION

<b>BENCH MARK DATA SHEET</b>		ELEV.
		22.317'
DATE DRAWN: JUNE 1983 BY: DBP		BM. NO.
REF: F.B. BM PG. 90 A DATE 9-2-60		90 A
ELEV. BASED ON B.M. NO. ?		

6-13-88 ADJUSTED EL FROM 22.40' TO 22.317' RJJ

DATE	TYPE	F.B. PG.	BY
REVISIONS			



Elev. 33.668' SARCO NO. 90B  
 DESCRIPTION OF BENCH MARK

Designation D 255 State Florida County Sarasota  
 Nearest town Sarasota County Sarasota Chief of party R. Gerrish  
 Distance and direction from nearest town 6.8 miles southeast Levelling date 1/66  
 Character of mark A C&GS Bench Mark Disk on steel rod Stamping D 255 1965  
 Established by C&GS  
 Detailed description

6.8 miles southeast along the Seaboard Air Line Railroad from the station at Sarasota, about 0.55 mile south of the crossing of Proctor Street, about 0.5 mile north of the crossing of Clarks Road, about 0.3 mile south of milepost 890, near the crossing of Ashton Street, 58 feet west of the west rail of the main track, 27 feet south of the center line of the street, 9.0 feet west of the northeast corner of a steel fence around the Sarasota County Highway garage, 9 1/2 feet west of a power pole, about level with the street and is a disk on copper coated steel rod flush with the ground and protected by a 4-inch tile projecting 0.1 foot. The rod was driven to refusal at a depth of 23.0 feet.

**SARASOTA COUNTY**  
 TRANSPORTATION DEPARTMENT  
 ENGINEERING DIVISION

<b>BENCH MARK DATA SHEET</b>		ELEV.
		33.668'
DATE DRAWN: 11/1/84 BY: SEH		BM. NO.
REF: FB. 279 PG. 22	DATE 7/9/84	90B
ELEV. BASED ON USGS BM D255		

8/21/98 CORRECT TWP MLS

DATE	TYPE	FB. PG.	BY
REVISIONS			