

NOTE: EL Taken from USC&GS BM #T 252
 (BM 89B) Elev established at 33.35' 12/1/87
 EL formerly 33.312'

SARASOTA COUNTY
 TRANSPORTATION DEPARTMENT
 ENGINEERING DIVISION

**BENCH MARK
 DATA SHEET**

ELEV.

33.35'

BM. NO.

R-91B

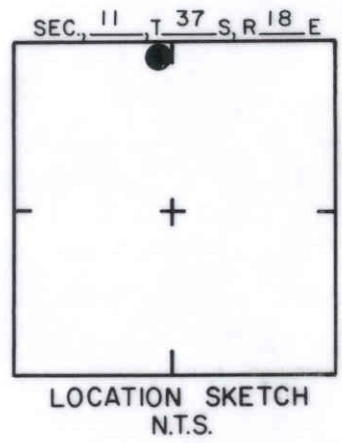
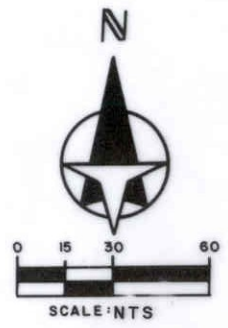
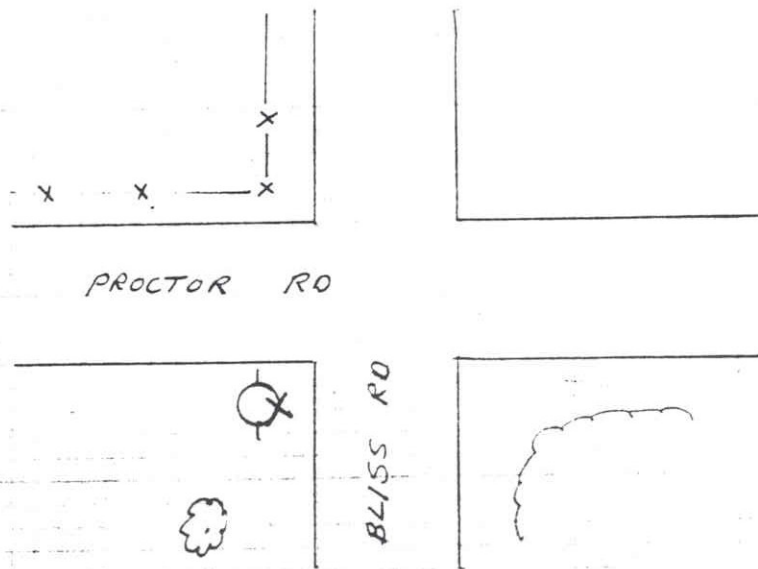
DATE DRAWN: 10/22/84 BY: KLH

DATE	TYPE	F.B. PG.	BY
REF: F.B. 254	PG. 62	DATE 5/22/84	

ELEV. BASED ON B.M. NO. 69

REVISIONS

TO REACH THE MARK FROM AT INTER PROCTOR RD & BLISS RD;
TBM IS RR SPIKE IN E. FACE POWER POLE
IN SE COR INTER



SARASOTA COUNTY
TRANSPORTATION DEPARTMENT
ENGINEERING DIVISION

**BENCH MARK
DATA SHEET**

ELEV.

34,88

BM. NO.

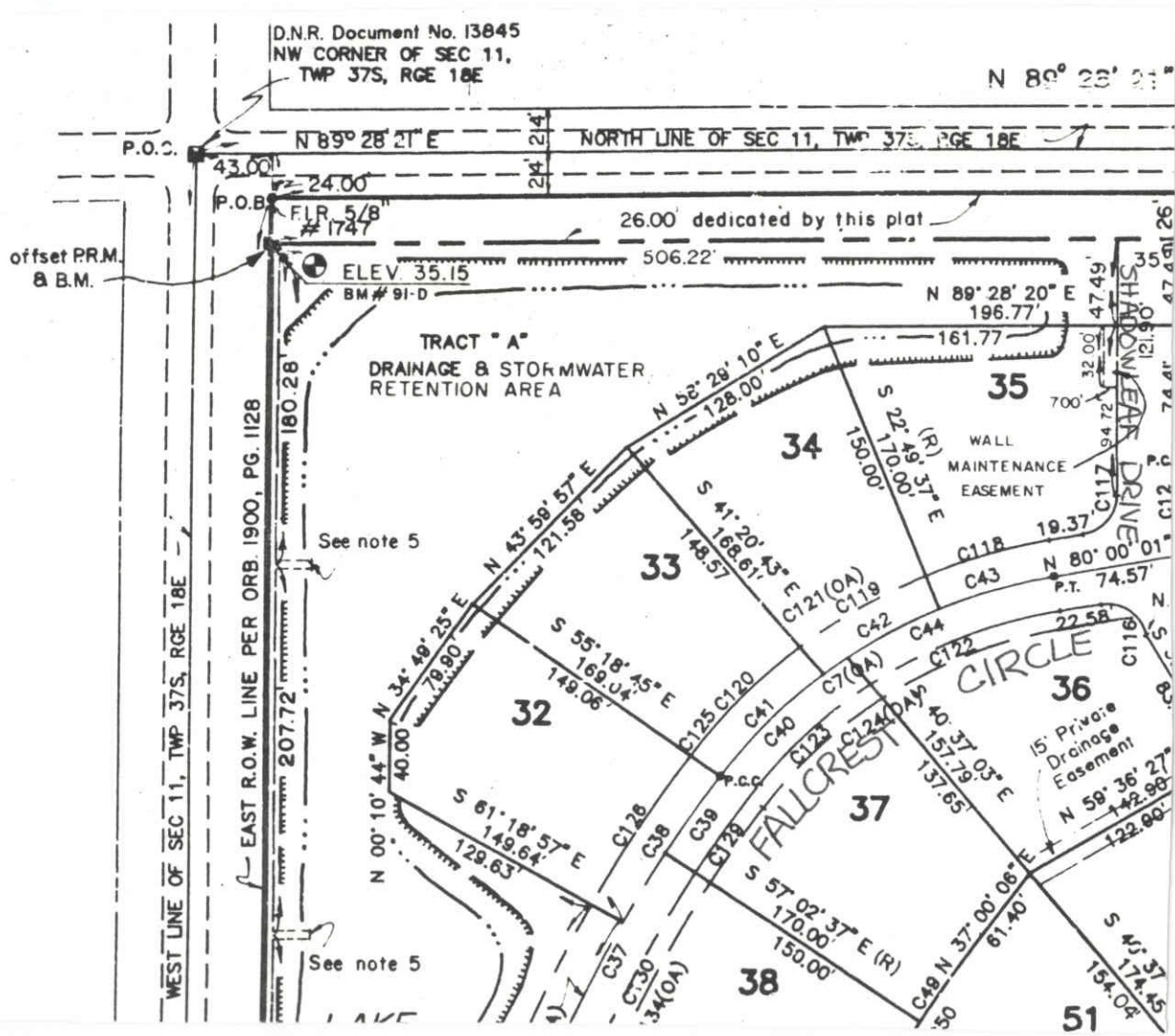
91C

DATE DRAWN: 1-26-87 BY: RJJ

REF: SWFWMD HFH 136 DATE 10/81

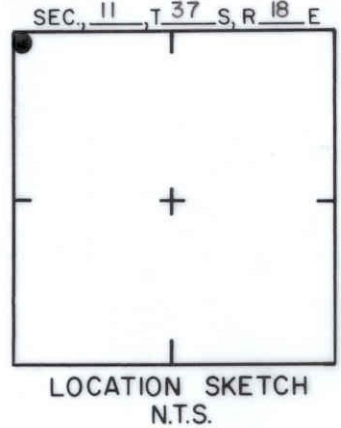
ELEV. BASED ON BM. NO. NOS

DATE	TYPE	FB. PG.	BY
REVISIONS			



AMBERLEA SUB.
P.B. 32 PG. 23

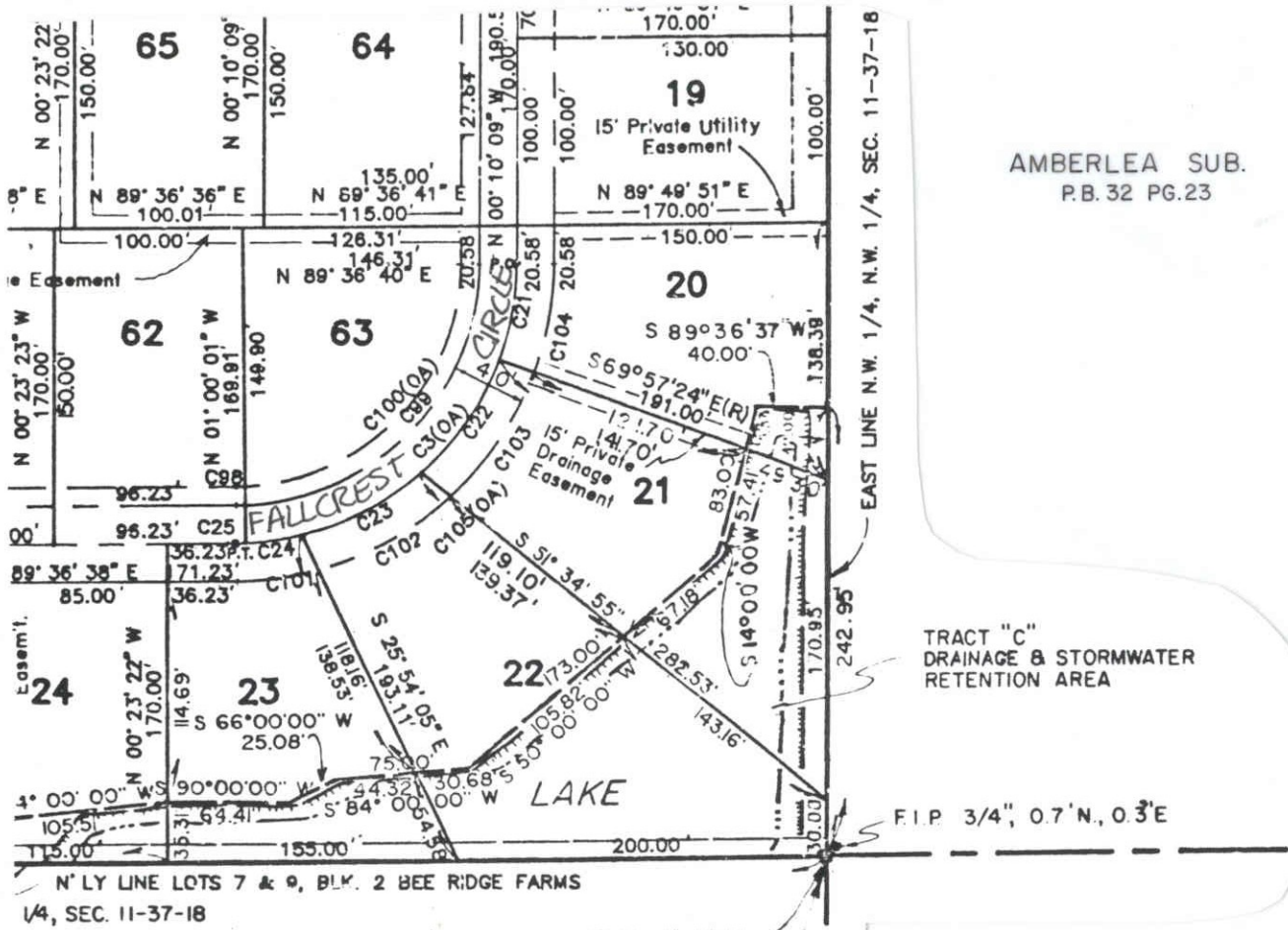
NOT TO SCALE



SARASOTA COUNTY
TRANSPORTATION DEPARTMENT
ENGINEERING DIVISION

BENCH MARK DATA SHEET		ELEV.
		35.15'
DATE DRAWN: APRIL 1988 BY: T.S.O.		BM. NO.
REF: F.B.	PG.	DATE
ELEV. BASED ON B.M. NO. 69		91 D

DATE	TYPE	F.B. PG.	BY
REVISIONS			



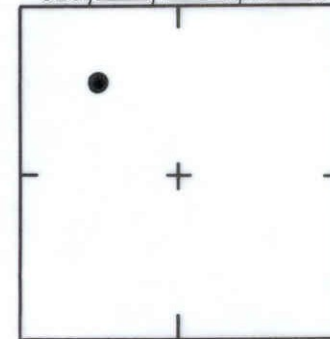
F.I.R. # 1747
 REPLACED WITH
 P.R.M. 3959
 EL. 33.66'
 BM # 91-E

AMBERLEA SUB.
 P.B. 32 PG. 23



NOT TO SCALE

SEC. 11, T. 37, S. R. 18, E



LOCATION SKETCH
 N.T.S.

TRACT "C"
 DRAINAGE & STORMWATER
 RETENTION AREA

SARASOTA COUNTY
 TRANSPORTATION DEPARTMENT
 ENGINEERING DIVISION

**BENCH MARK
 DATA SHEET**

ELEV.

33.66'

BM. NO.

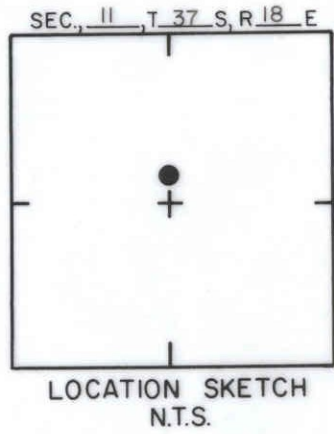
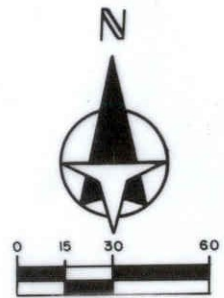
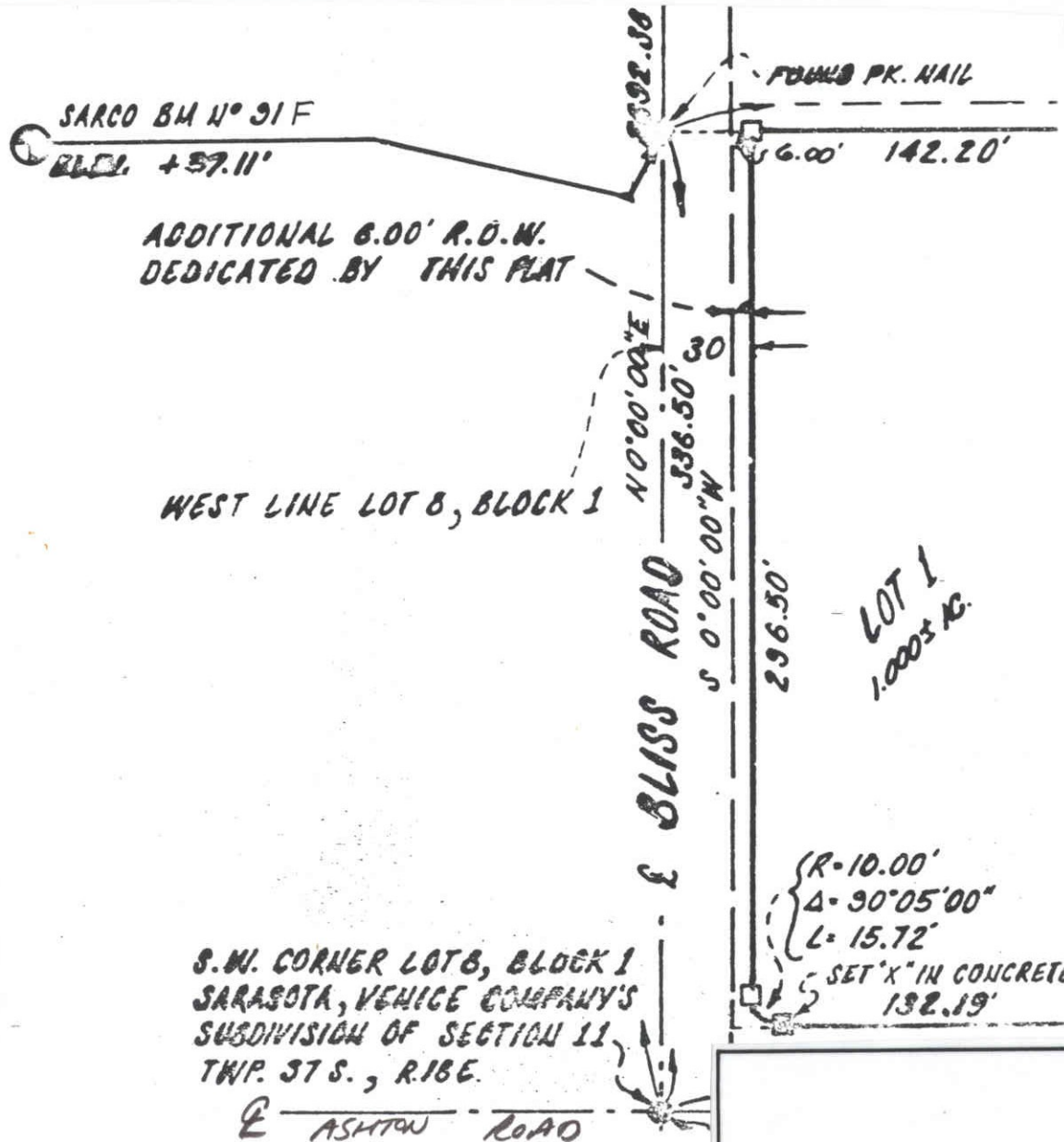
91 E

DATE DRAWN: APRIL 1988 BY: T.S.O.

REF: F.B. PG. DATE

ELEV. BASED ON BM. NO. 69

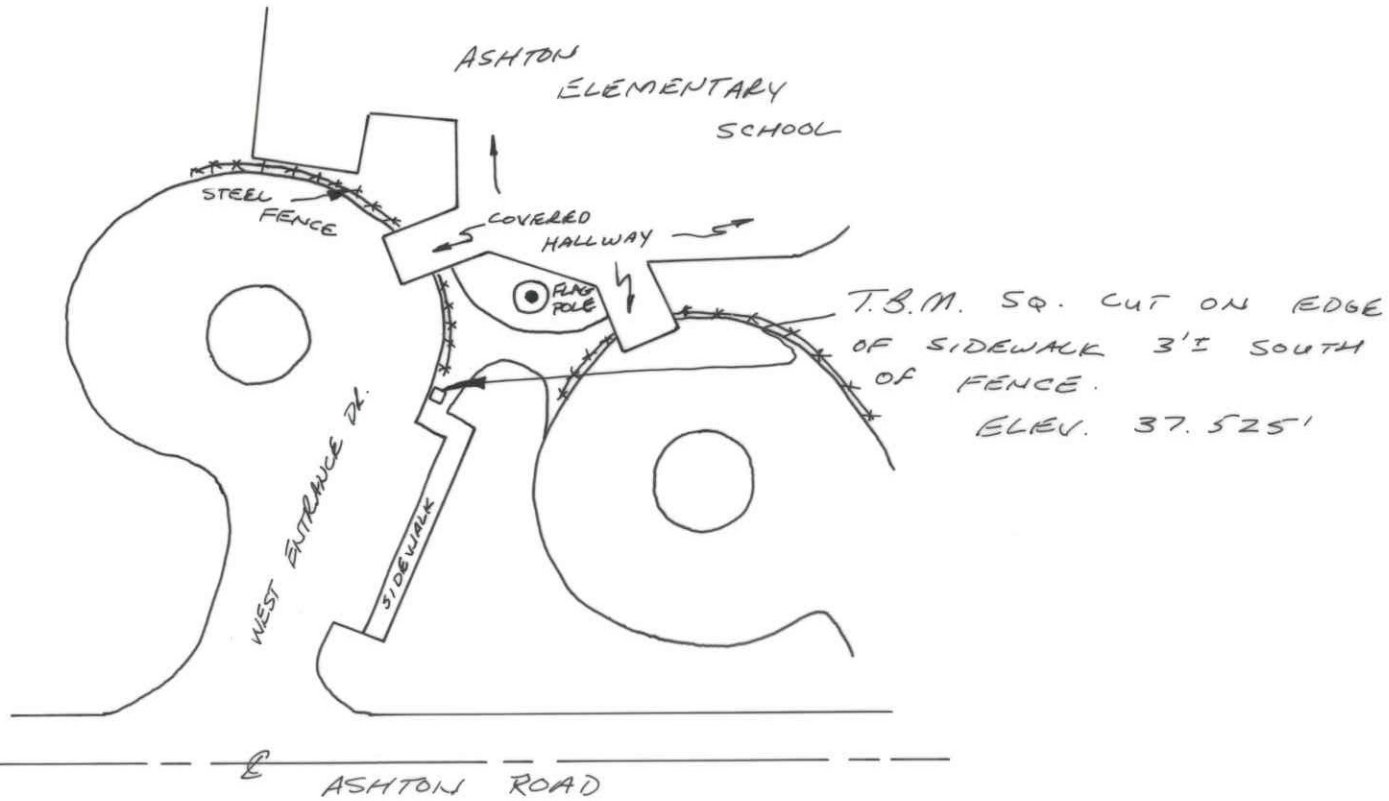
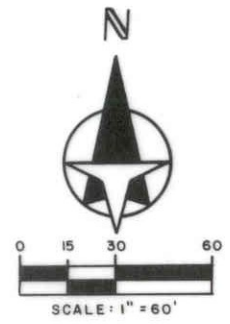
DATE	TYPE	F.B. PG.	BY
REVISIONS			



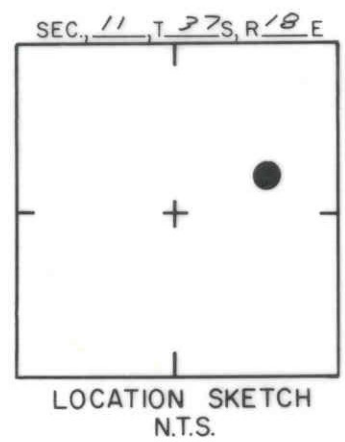
SARASOTA COUNTY
TRANSPORTATION DEPARTMENT
ENGINEERING DIVISION

BENCH MARK DATA SHEET		ELEV.
		37.11'
DATE DRAWN: 10-27-87 BY: BAG		BM. NO.
REF: FB. PG. DATE		91F
ELEV. BASED ON B.M. NO. R-91B		

DATE	TYPE	FB. PG.	BY
REVISIONS			



T.B.M. SQ. CUT ON EDGE
OF SIDEWALK 3'± SOUTH
OF FENCE.
ELEV. 37.525'



SARASOTA COUNTY
TRANSPORTATION DEPARTMENT
ENGINEERING DIVISION

**BENCH MARK
DATA SHEET**

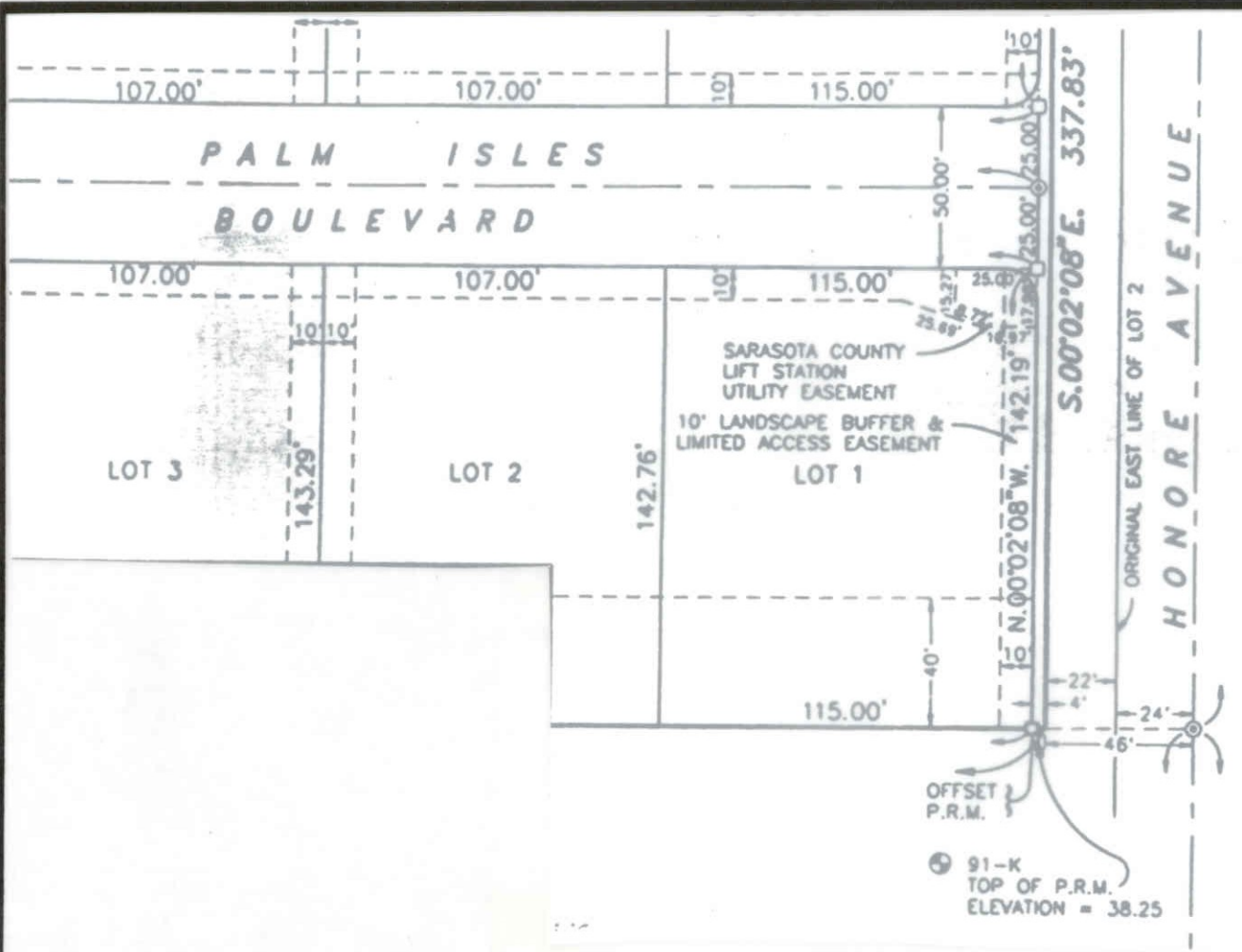
ELEV.
37.525'
BM. NO.

DATE DRAWN: 8-7-90 BY: KCL

DATE TYPE F.B. PG. BY REF: F.B. 319 PG. 45 DATE 7/90

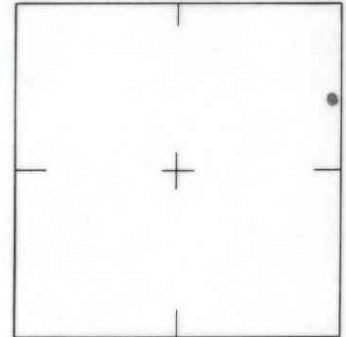
REVISIONS ELEV. BASED ON B.M. NO. 915

916



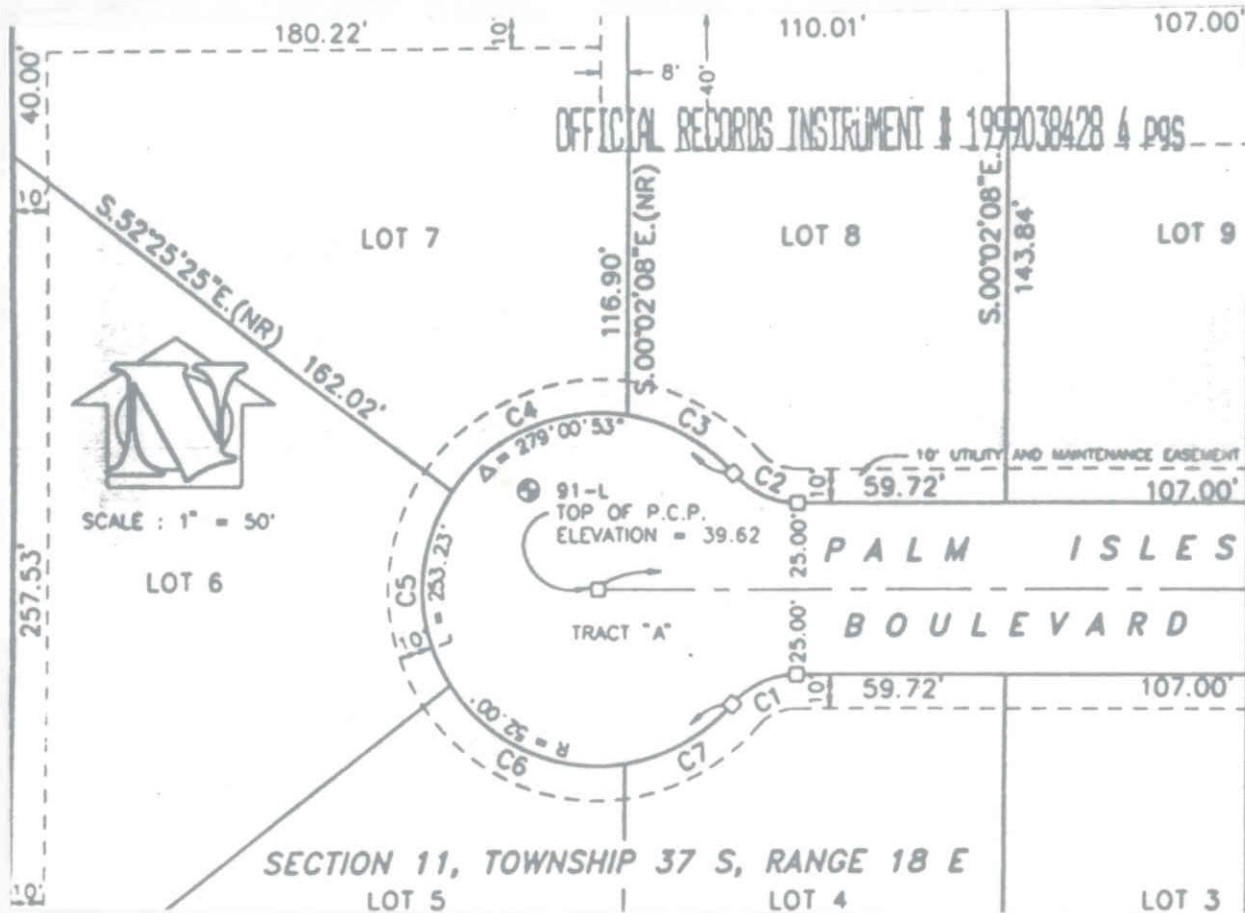
SCALE: N.T.S.

SEC. 11 T. 37 S. R. 18 E



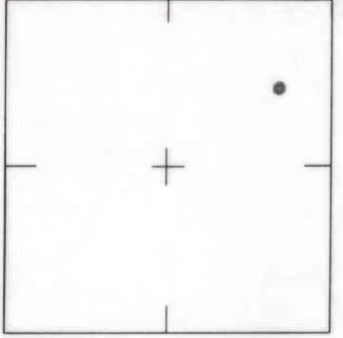
LOCATION SKETCH
N.T.S.

SARASOTA COUNTY TRANSPORTATION DEPARTMENT ENGINEERING DIVISION, SURVEY/MAPPING SECTION		
REVISIONS / REMARKS SET BY: CYRIX ENGINEERING	BENCH MARK DATA SHEET	
	DATE DRAWN: 11-4-99	BY: CMZ
	REF.:	PG. DATE:
	ELEV. BASED ON B.M. NO. R-91B	
	ELEV.	38.25'
	B.M. NO.	91-K



SCALE: N.T.S.

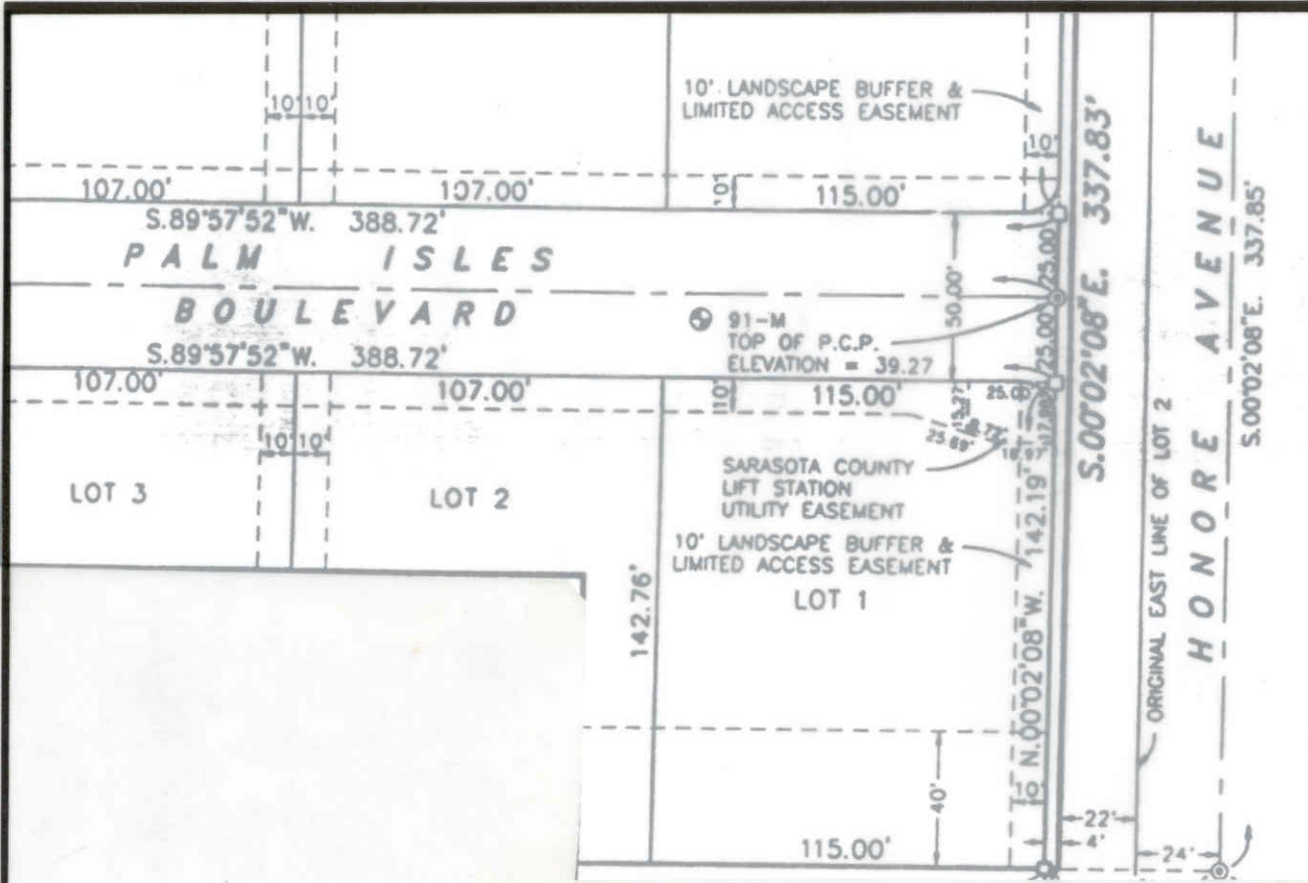
SEC. 11, T. 37 S, R. 18 E



LOCATION SKETCH
N.T.S.

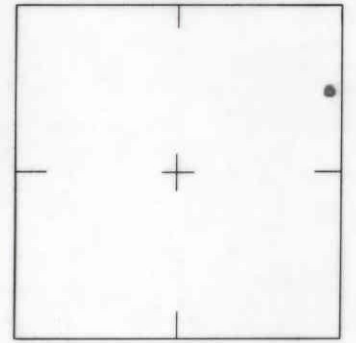
SARASOTA COUNTY TRANSPORTATION DEPARTMENT ENGINEERING DIVISION, SURVEY/MAPPING SECTION	
BENCH MARK DATA SHEET	ELEV. 39.62'
DATE DRAWN: 11-4-99 BY: CMZ	B.M. NO. 91-L
REF.: PG. DATE:	
SET BY: CYRIX ENGINEERING	ELEV. BASED ON B.M. NO. R-91B

REVISIONS / REMARKS



SCALE: N.T.S.

SEC. 11 , T. 37 S., R. 18 E



LOCATION SKETCH
N.T.S.

SARASOTA COUNTY TRANSPORTATION DEPARTMENT ENGINEERING DIVISION, SURVEY/MAPPING SECTION			
REVISIONS / REMARKS	BENCH MARK DATA SHEET		ELEV.
	DATE DRAWN: <u>11-4-99</u> BY: <u>CMZ</u>		39.27'
	REF.: PG. DATE:		B.M. NO.
	SET BY: <u>CYRIX ENGINEERING</u>		91-M
ELEV. BASED ON B.M. NO. <u>R-91B</u>			