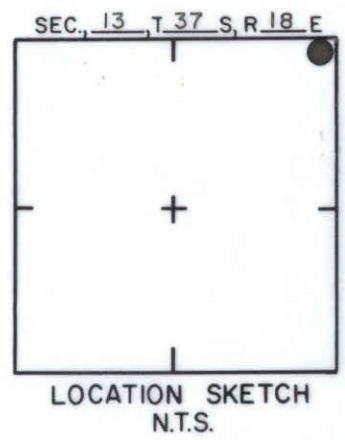
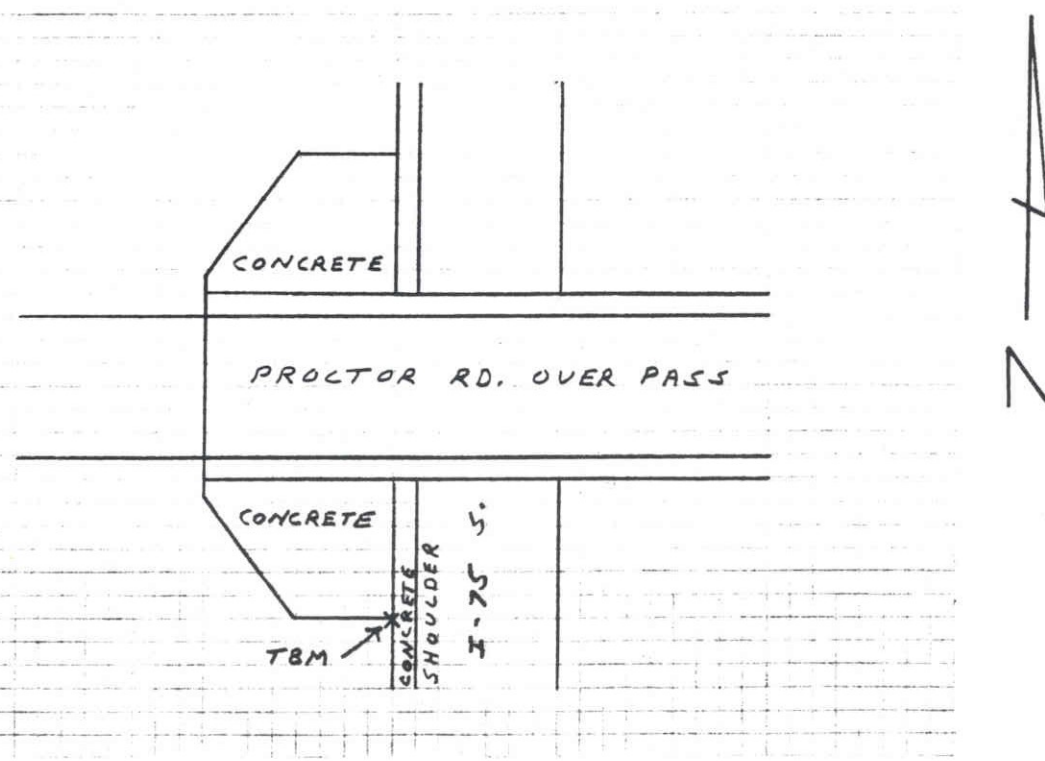


TO REACH THE MARK FROM INTER. PROCTOR RD. OVER PASS &  
 I-75 S., TBM IS A CUT SQ. ON CONCRETE  
 SHOULDER



**SARASOTA COUNTY**  
 TRANSPORTATION DEPARTMENT  
 ENGINEERING DIVISION

<b>BENCH MARK DATA SHEET</b>		ELEV.
		32.83'
DATE DRAWN: 1-29-87 BY: RJJ		BM. NO.
REF: SWFWMD HFH155 DATE 10/81		93B
ELEV. BASED ON BM. NO.NOS		

DATE	TYPE	F.B. PG.	BY
REVISIONS			

CATTLEMAN ROAD

PROCTOR ROAD

GROVE POINTE BLVD.

LOT 164

POST POINTE DRIVE

LOT 263

LOT 264

LOT 168

SANDY POINTE DRIVE

LOT 347

LOT 346

LOT 345

NOTE:

BENCHMARK IS LOCATED NEAR BACK OF CURB AT THE SOUTH TIP OF THE SOUTH TRAFFIC ISLAND OF GROVE POINTE BLVD.

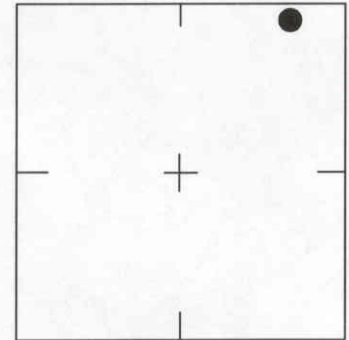


BENCHMARK  
4" CONCRETE MONUMENT  
TOP OF PIN.



SCALE: N.T.S.

SEC., 12 , T 37 S, R 18 E



LOCATION SKETCH  
N.T.S.

GROVE POINTE UNIT 1  
PB.34 PG.1

REVISIONS / REMARKS

SET BY: AM ENGINEERING

SARASOTA COUNTY

TRANSPORTATION DEPARTMENT

ENGINEERING DIVISION, SURVEY/MAPPING SECTION

BENCH MARK  
DATA SHEET

DATE DRAWN: 01/22/92 BY: DSW

REF.: ORB 2349 PG. 1575 DATE: 12/06/91

ELEV. BASED ON B.M. NO. SARCO R-67 EL.=32.92

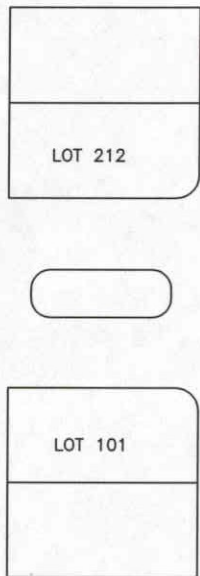
ELEV.

35.33'

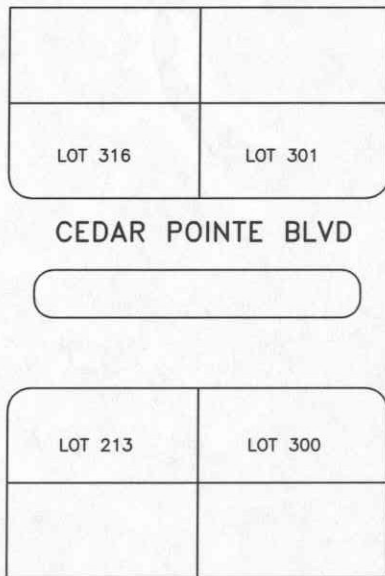
B.M. NO.

93-C

GANTT ROAD

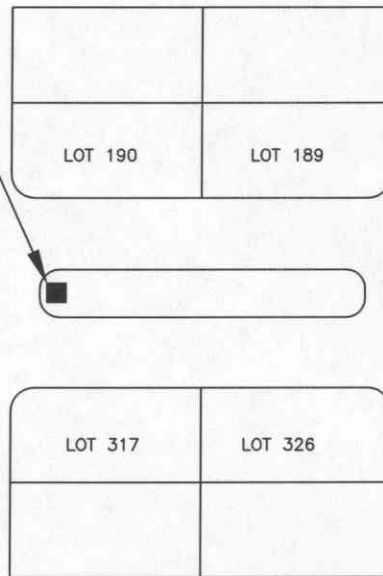


WILDE POINTE WAY



CEDAR POINTE BLVD

OAK POINTE WAY



WOOD POINTE WAY

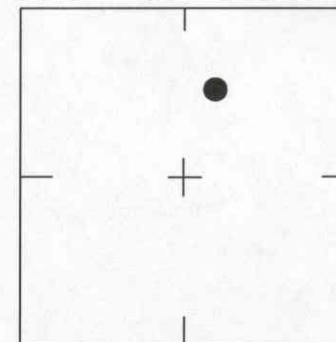


BENCH MARK  
4" CONCRETE MON.  
TOP OF PIN.



SCALE: N.T.S.

SEC., 12, T. 37 S, R. 18 E



LOCATION SKETCH  
N.T.S.

NOTE:

BENCHMARK IS LOCATED NEAR THE BACK OF CURB AT THE WEST TIP OF THE EAST TRAFFIC ISLAND ON CEDAR POINTE BLVD.

GROVE POINTE UNIT 1  
PB. 34 PG. 1

REVISIONS / REMARKS	
SET BY:	AM ENGINEERING

SARASOTA COUNTY TRANSPORTATION DEPARTMENT ENGINEERING DIVISION, SURVEY/MAPPING SECTION	
BENCH MARK DATA SHEET	ELEV. 36.47'
	B.M. NO. 93-D
DATE DRAWN: 01/28/92 BY: DSW	
REF.: ORB.2349 PG. 1576 DATE: 12/03/91	
ELEV. BASED ON B.M. NO. SARCO R-67 EL.=32.92	