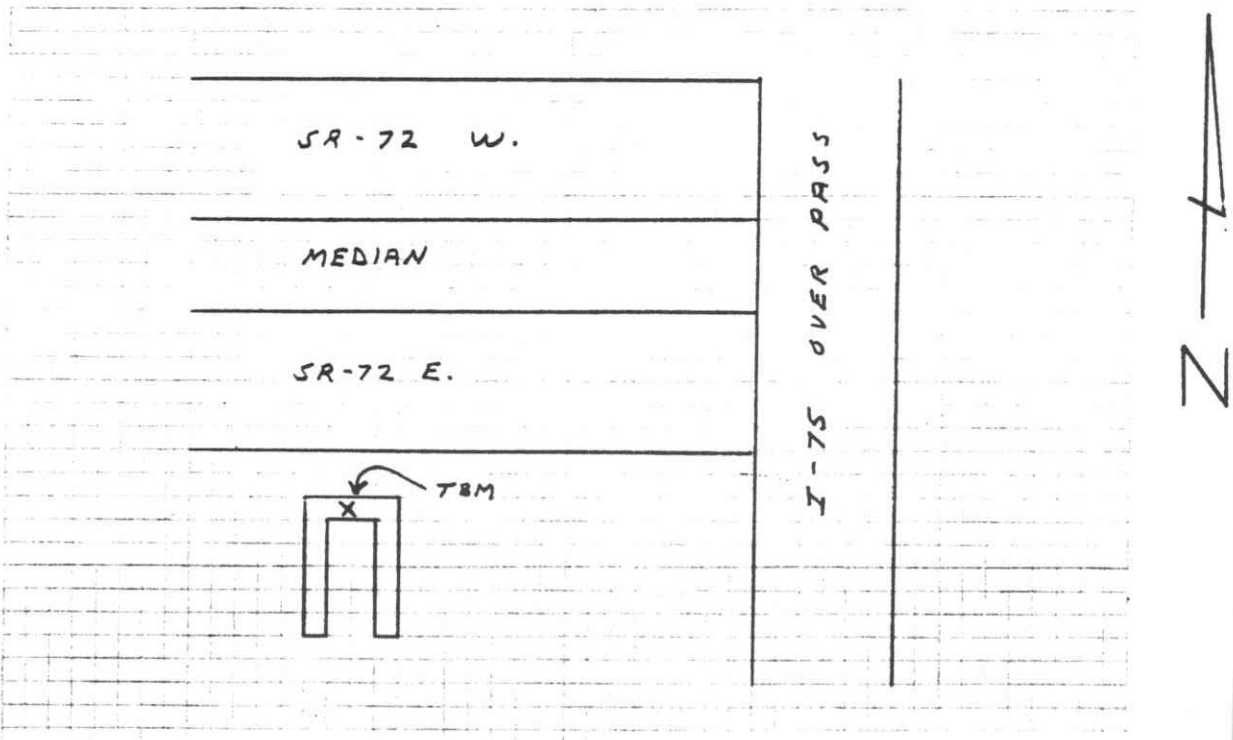
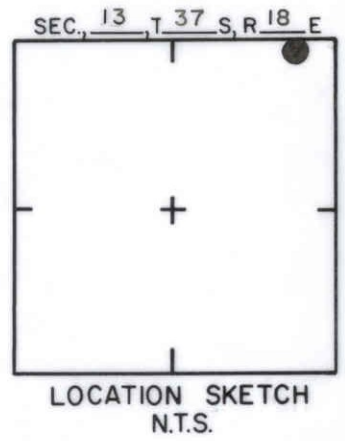
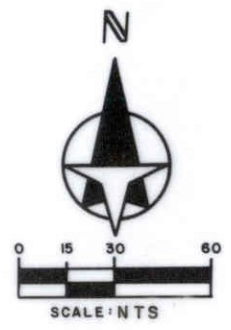


TO REACH THE MARK FROM INTER. SR-72 E. & I-75 OVER  
PASS, TBM IS A CUT SQ. ON E. OF N. END OF  
A CONCRETE CULVERT



**SARASOTA COUNTY**  
TRANSPORTATION DEPARTMENT  
ENGINEERING DIVISION

<b>BENCH MARK DATA SHEET</b>		ELEV.
		33.56'
DATE DRAWN: 1-29-87 BY: RJJ		BM. NO.
REF: SWFWMD HFH 154 DATE 10/81		95
ELEV. BASED ON B.M. NO. NOS		

DATE	TYPE	FB. PG.	BY
REVISIONS			