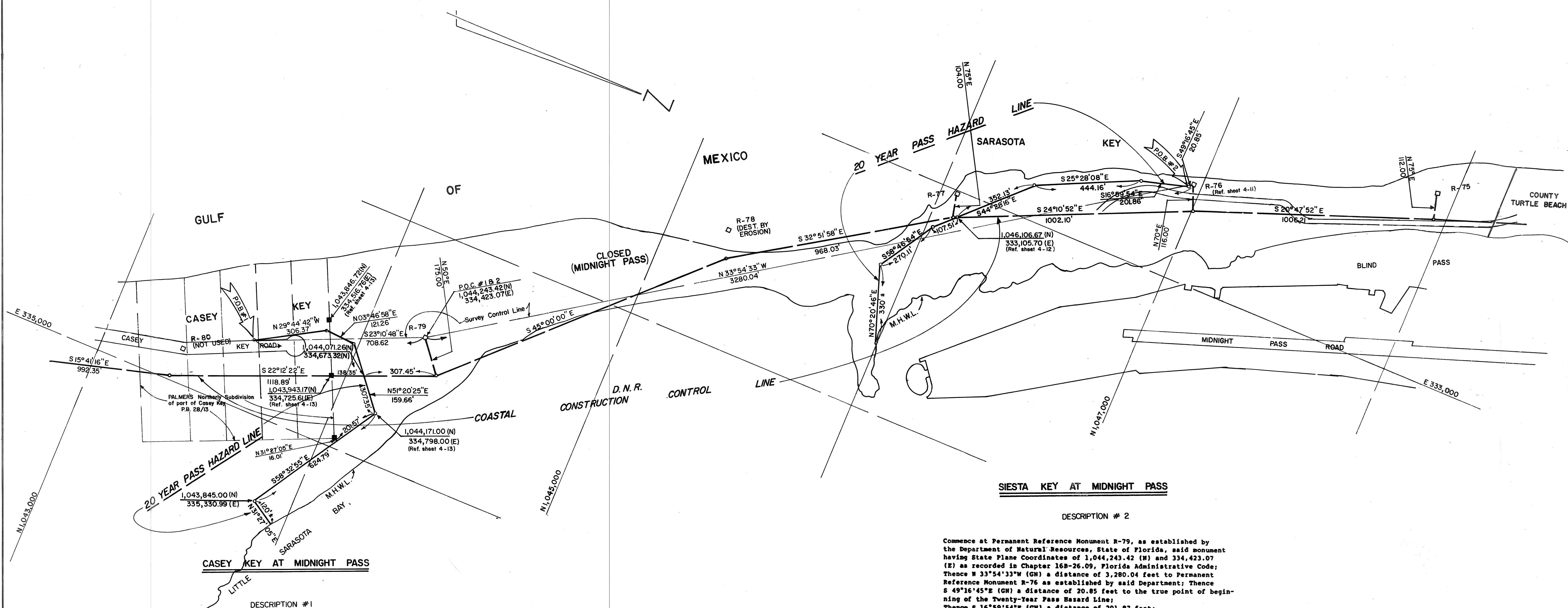


27 Midnight Pass. (1979)



**DESCRIPTION #1**

Commence at Permanent Reference Monument R-79, as established by the Department of Natural Resources, State of Florida, said monument having State Plane Coordinates of 1,044,243.42 (N) and 334,423.07 (E) as recorded in Chapter 16B-26.09, Florida Administrative Code; Thence S 23°10'48"E (GN) a distance of 708.62 feet to the true point of beginning of the Twenty-Year Pass Hazard Line; Thence N 29°44'42"W (GN) a distance of 306.37 feet; Thence N 3°46'58"E (GN) a distance of 121.26 feet; Thence N 51°20'25"E (GN) a distance of 307.35 feet; Thence S 58°32'55"E (GN) a distance of 624.79 feet; Thence N 31°27'05"E (GN) a distance of 120 ± feet to the mean high water line of Little Sarasota Bay and the Point of Terminus.

**DESCRIPTION #2**

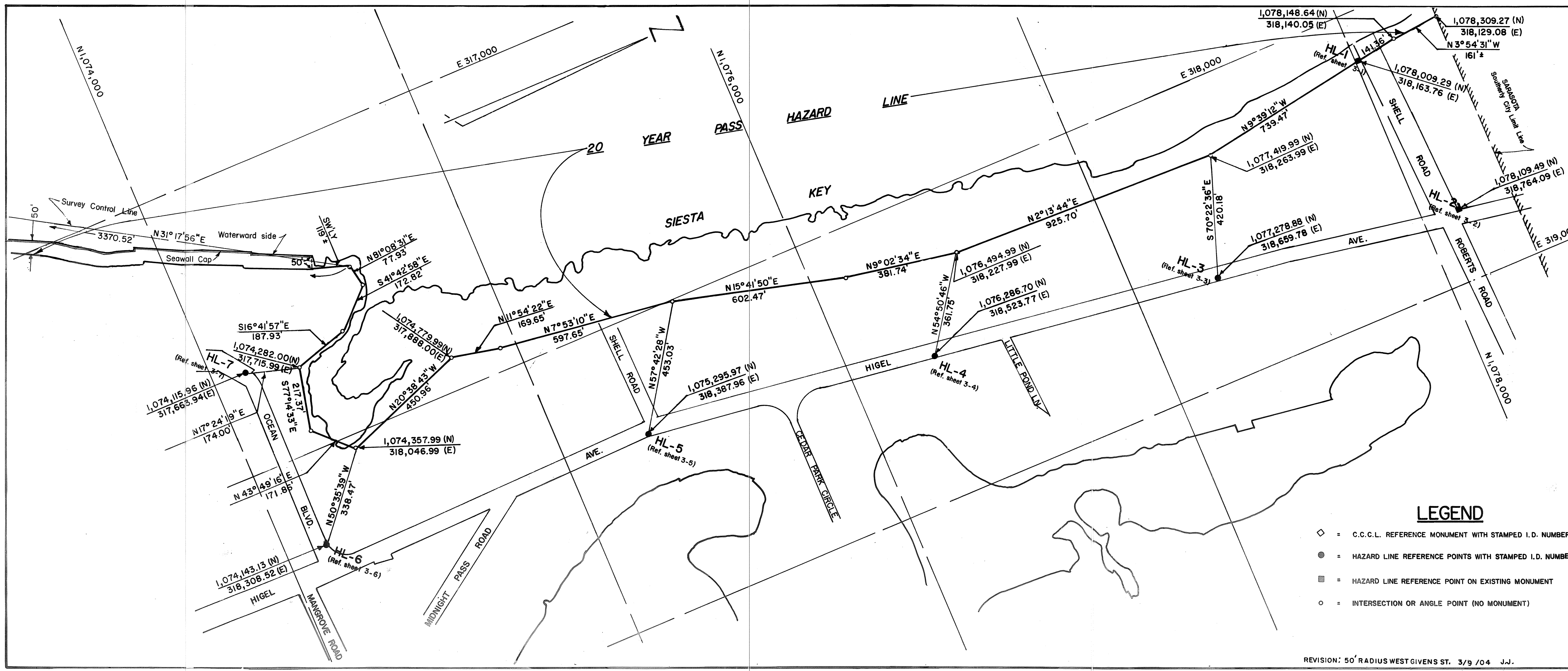
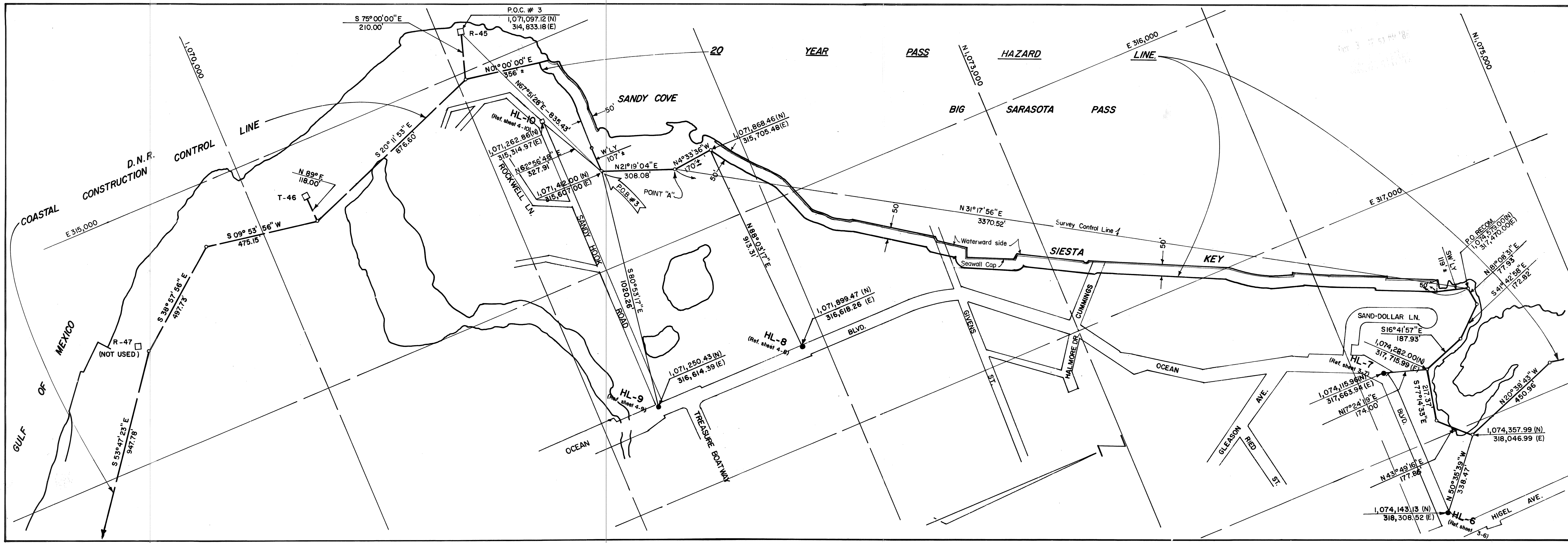
Commence at Permanent Reference Monument R-79, as established by the Department of Natural Resources, State of Florida, said monument having State Plane Coordinates of 1,044,243.42 (N) and 334,423.07 (E) as recorded in Chapter 16B-26.09, Florida Administrative Code; Thence N 33°54'33"W (GN) a distance of 3,280.04 feet to Permanent Reference Monument R-76 as established by said Department; Thence S 49°16'45"E (GN) a distance of 20.85 feet to the true point of beginning of the Twenty-Year Pass Hazard Line; Thence S 16°59'54"E (GN) a distance of 201.87 feet; Thence S 25°28'08"E (GN) a distance of 444.16 feet; Thence S 44°28'16"E (GN) a distance of 459.64 feet; Thence S 58°46'54"E (GN) a distance of 270.11 feet; Thence N 70°20'46"E (GN) a distance of 330.00 ± feet to the mean high water line at Blind Pass and the Point of Terminus.

**LEGEND**

- ◊ = C.C.C.L. REFERENCE MONUMENT WITH STAMPED I.D. NUMBER
- = HAZARD LINE REFERENCE POINTS WITH STAMPED I.D. NUMBER
- = HAZARD LINE REFERENCE POINT ON EXISTING MONUMENT
- = INTERSECTION OR ANGLE POINT (NO MONUMENT)

SARASOTA COUNTY TRANSPORTATION DEPARTMENT ENGINEERING DIVISION, CADASTRAL SECTION			
<b>20 YEAR PASS HAZARD LINE</b>			
AT MIDNIGHT PASS			
DRAWN	BY	DATE	DATE
	P.E. BROWN	4-3-86	9-8-86
CHECKED		9-8-86	
COMPARED			
REF. CO. ORD. '79-03, CO. ORD. 86-24	PROJECT NO. 2031		SHEET 1 OF 4

at Big Sarasota Pass (2 of 4)



**DESCRIPTION # 3**

Commence at Permanent Reference Monument R-45, as established by the Department of Natural Resources, State of Florida, said monument having State Plane Coordinates of 1,071,097.12 (N) and 314,833.18 (E) as recorded in Chapter 16B-26.09, Florida Administrative Code; Thence N 67°51'28" (GN) a distance of 835.43 feet to the true point of beginning of the Twenty-Year Pass Hazard Line at the location known as Sandy Cove; Thence westerly to a point perpendicular and 50.0 feet landward from the waterward side of the cap of an existing seawall, a distance of 107 feet more or less; Thence return along the same line to the true Point of Beginning at Sandy Cove and run N 21°19'04" (GN) along said Twenty-Year Pass Hazard Line a distance of 308.08 feet to a point designated for reference as point "A"; Thence N 4°33'36" (GN) to the point of terminus of said Sandy Cove location at a point perpendicular and 50.0 feet landward from the waterward side of the cap of an existing seawall, a distance of 170 feet more or less; Thence return along the same line to said reference point "A"; Thence recommence said hazard line at a point N 31°17'56" (GN) from said point "A", a distance of 3,370.52 feet, said point having State Plane Coordinates of 1,074,579.00 (N) and 317,470.00 (E); Thence southeasterly to a point perpendicular and 50.00 feet landward from the waterward side of the nearest cap of an existing seawall that runs northeasterly and southeasterly, a distance of 119 feet, more or less; Thence return along the same line to the Point of Recommencement and continue along said Twenty-Year Pass Hazard Line;

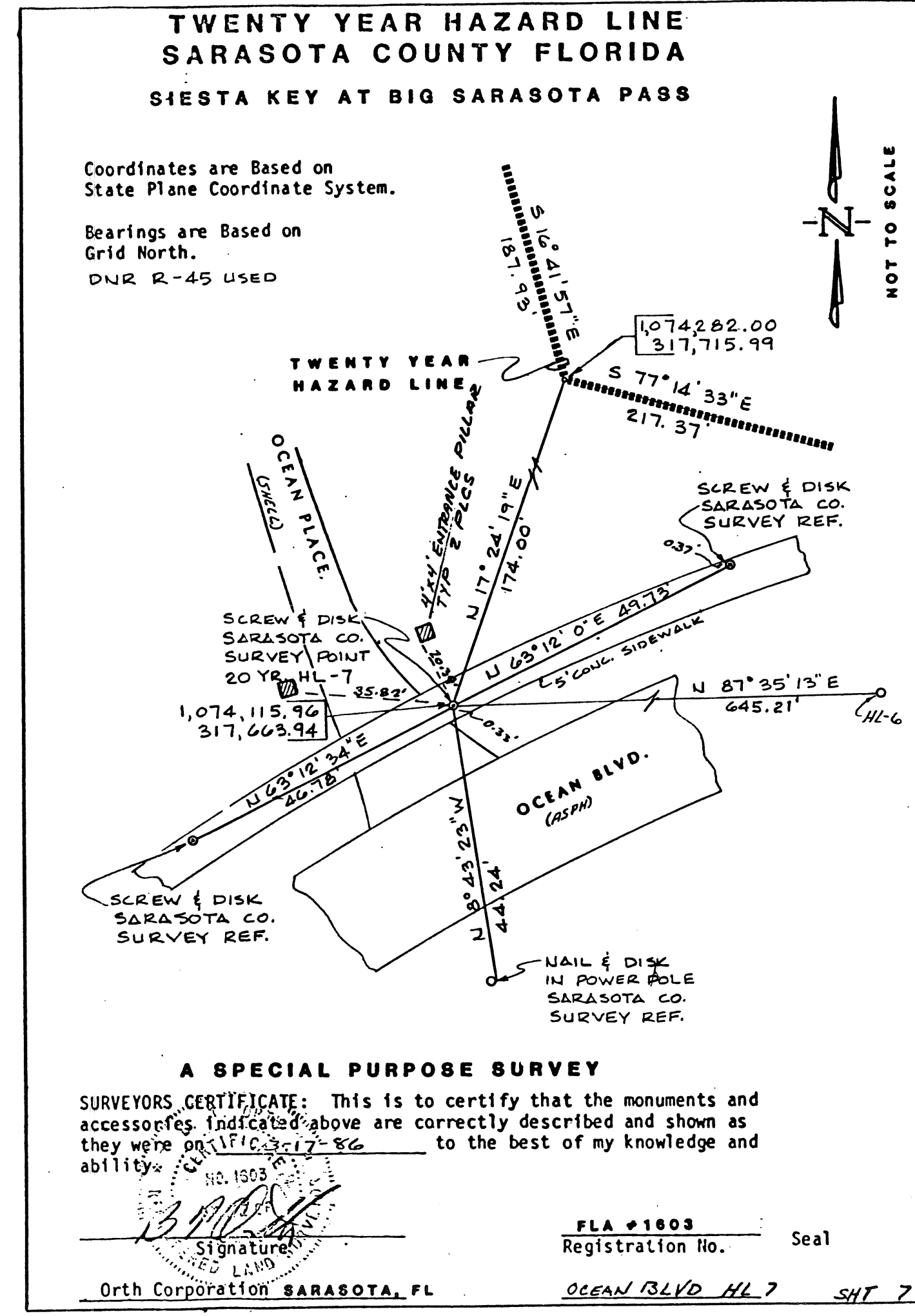
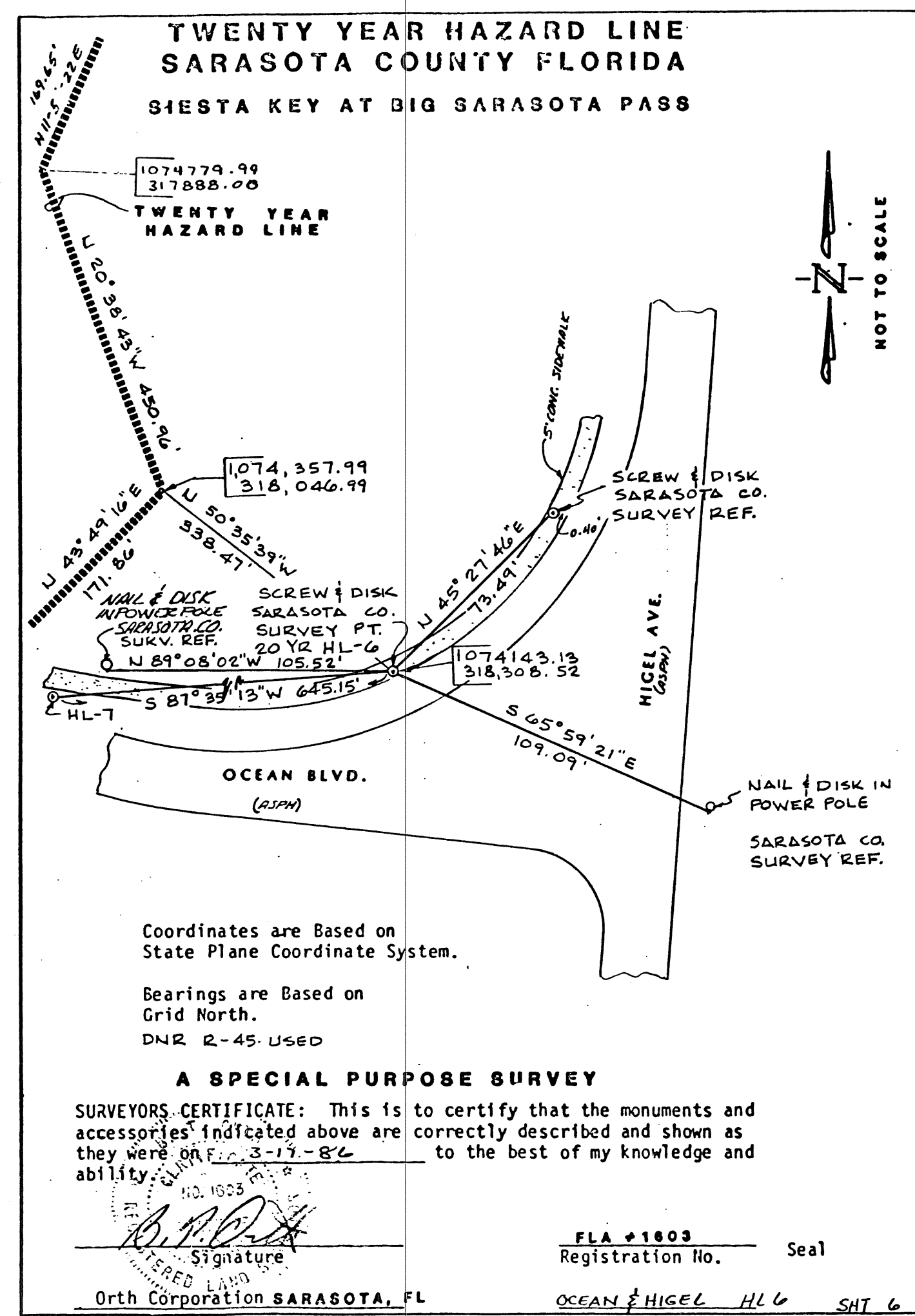
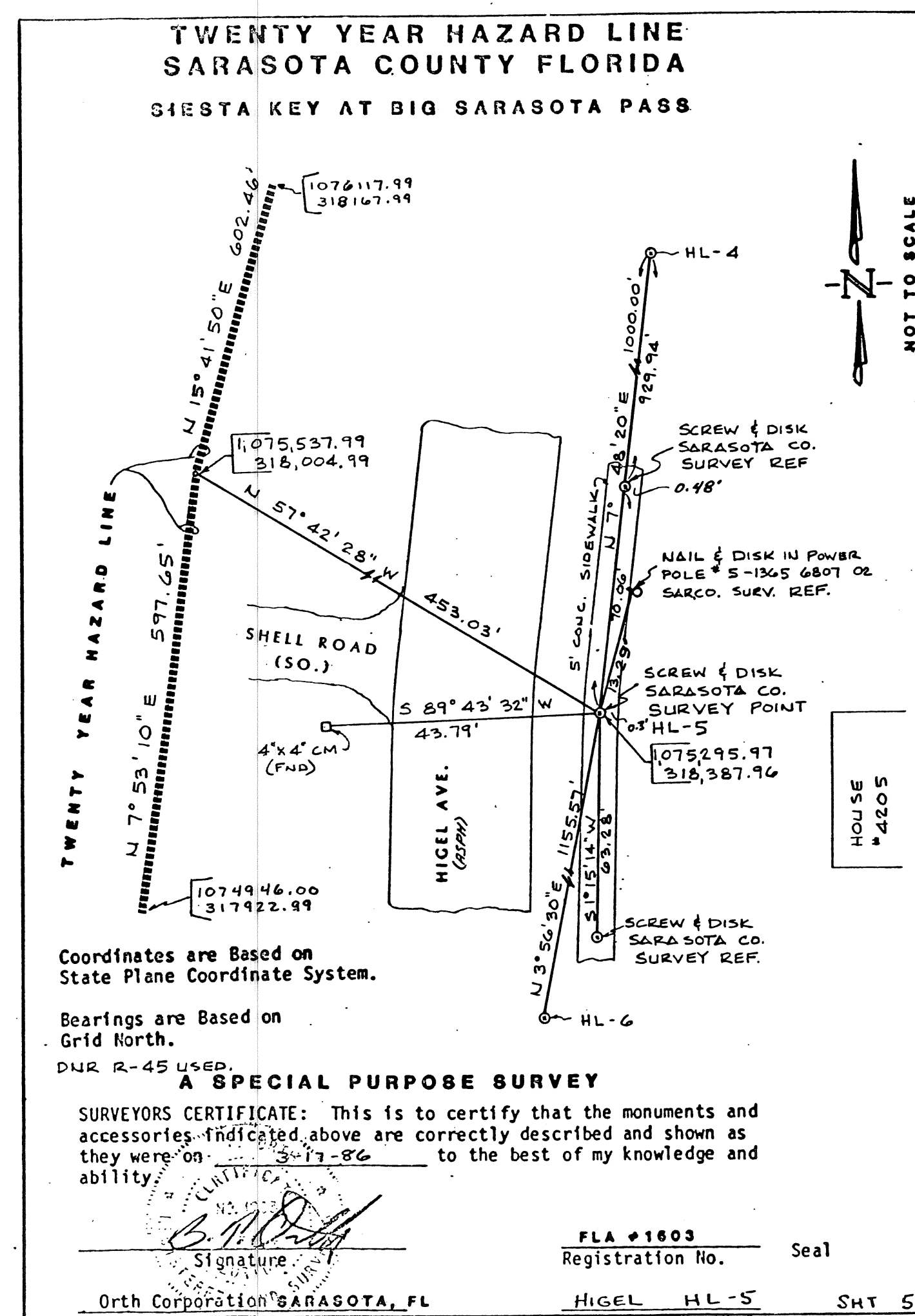
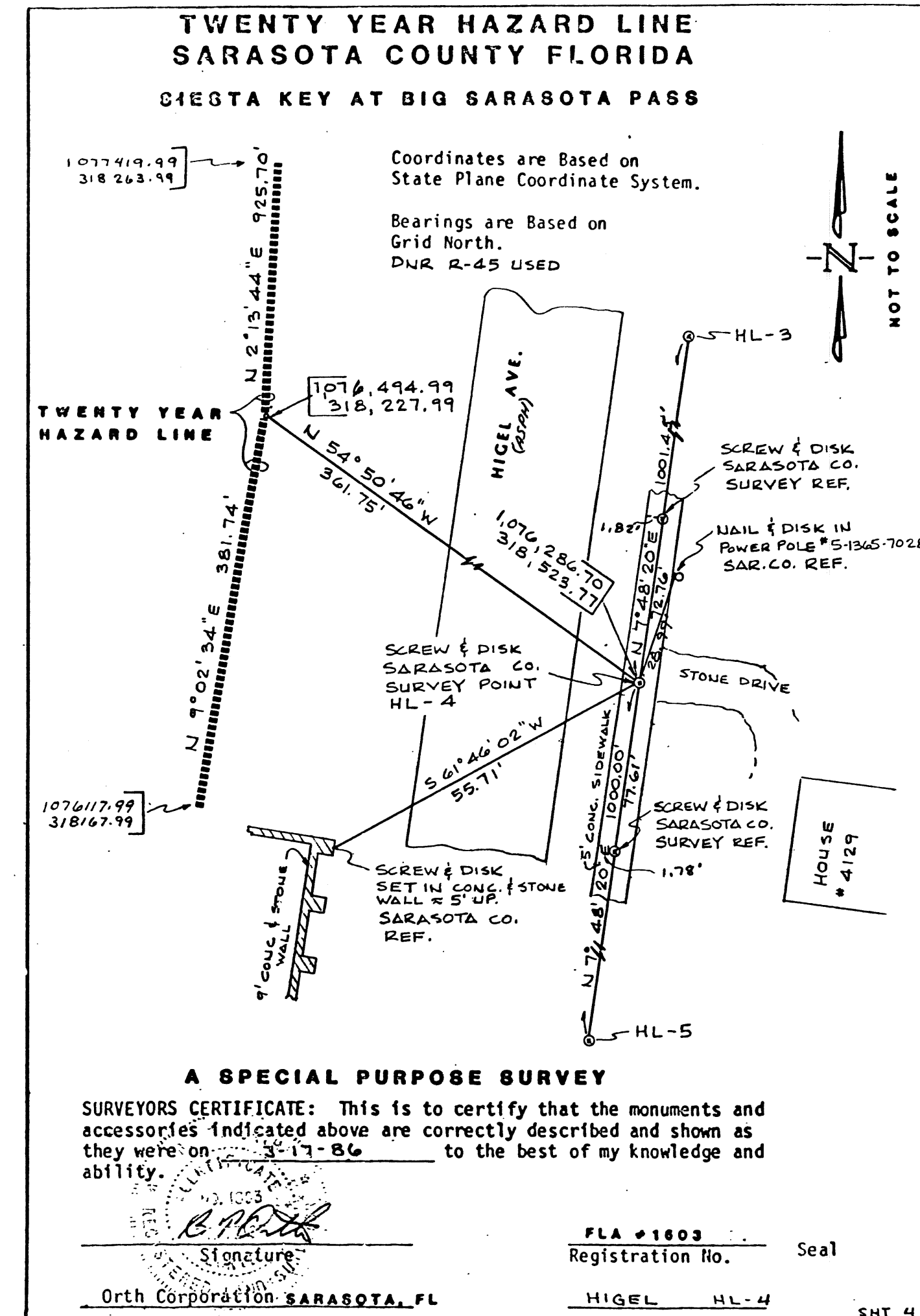
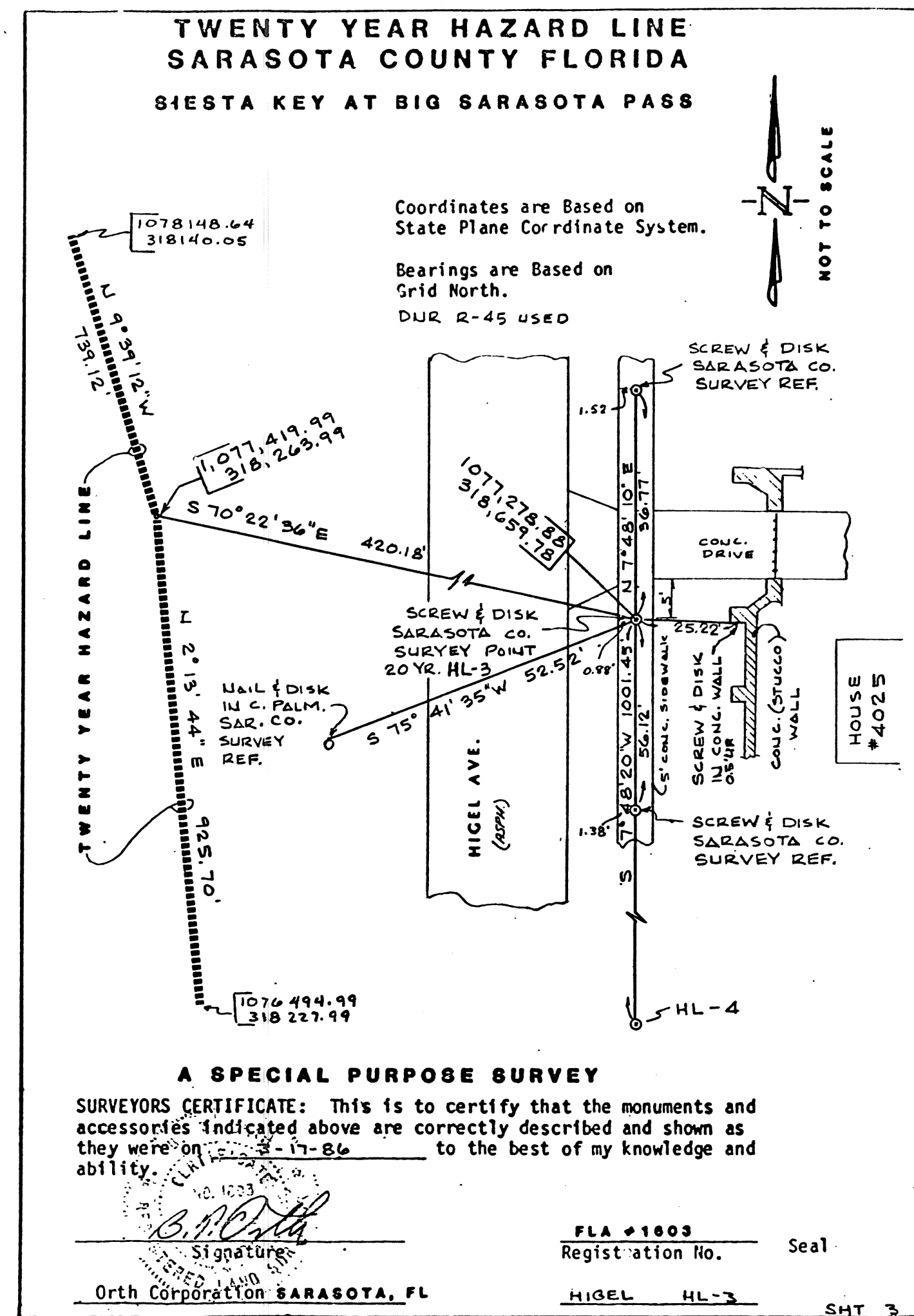
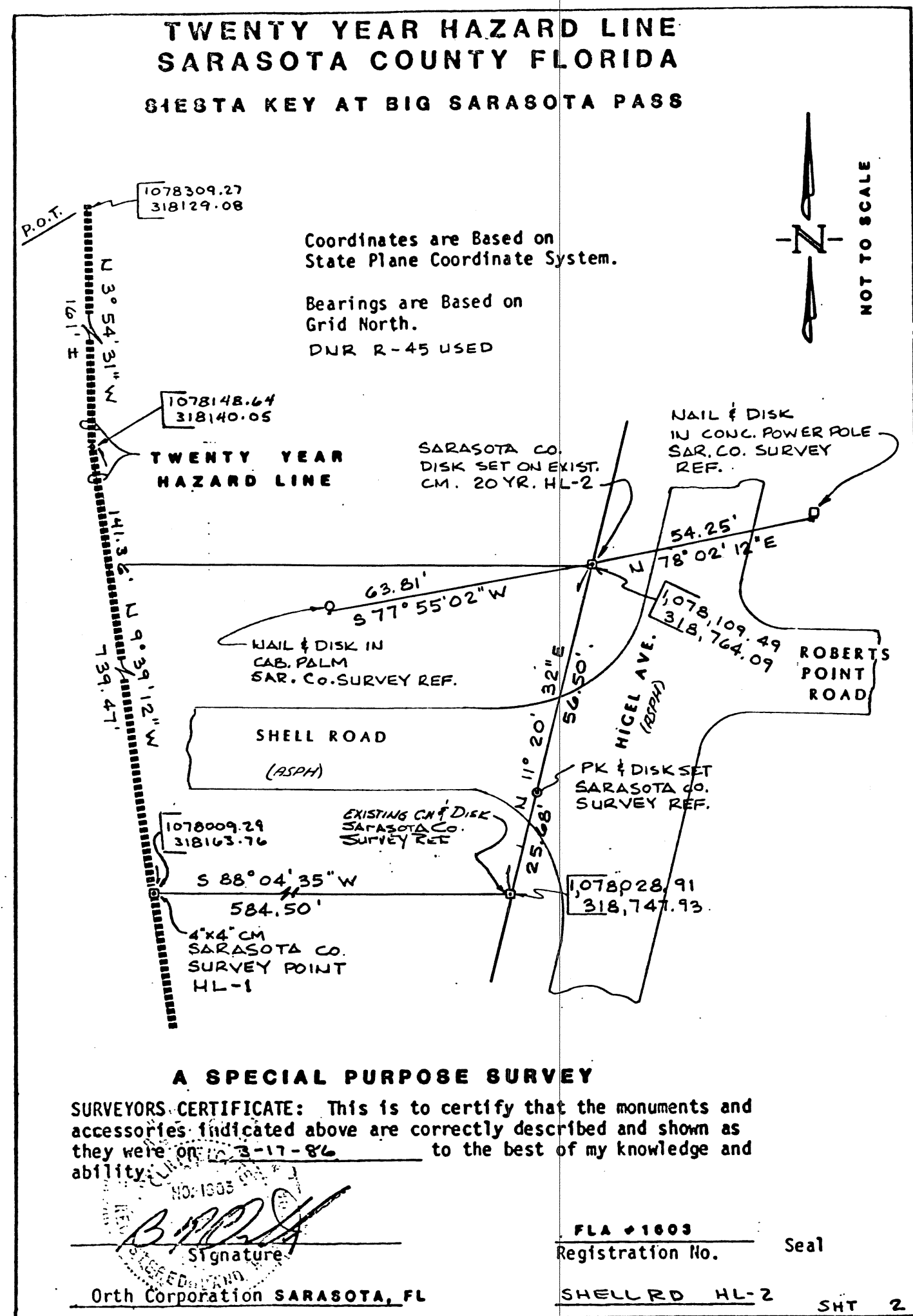
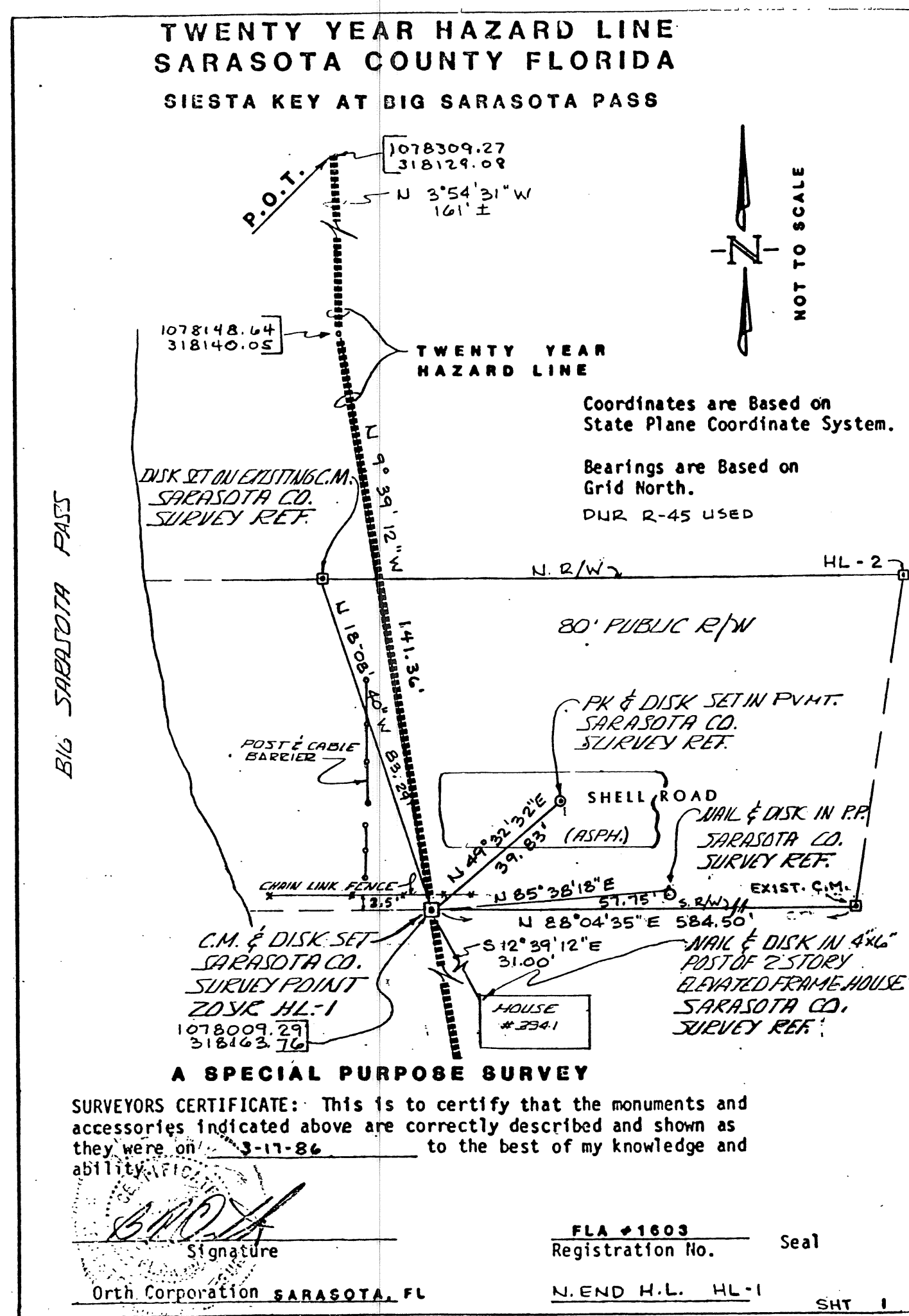
Thence N 81°08'31" (GN) a distance of 77.93 feet;  
 Thence S 41°42'58" (GN) a distance of 172.82 feet;  
 Thence S 16°41'57" (GN) a distance of 187.93 feet;  
 Thence S 77°14'33" (GN) a distance of 217.37 feet;  
 Thence N 43°49'16" (GN) a distance of 171.86 feet;  
 Thence N 20°38'43" (GN) a distance of 450.96 feet;  
 Thence N 11°54'22" (GN) a distance of 169.65 feet;  
 Thence N 7°53'10" (GN) a distance of 597.65 feet;  
 Thence N 15°41'50" (GN) a distance of 602.47 feet;  
 Thence N 9°02'34" (GN) a distance of 381.74 feet;  
 Thence N 2°13'44" (GN) a distance of 925.70 feet;  
 Thence N 9°39'12" (GN) a distance of 739.47 feet;  
 Thence N 3°54'31" (GN) a distance of 161.4 feet to the line of unincorporated Sarasota County and the point of terminus.

- LEGEND**
- ◊ = C.C.C.L. REFERENCE MONUMENT WITH STAMPED I.D. NUMBER
  - = HAZARD LINE REFERENCE POINTS WITH STAMPED I.D. NUMBER
  - = HAZARD LINE REFERENCE POINT ON EXISTING MONUMENT
  - = INTERSECTION OR ANGLE POINT (NO MONUMENT)

SARASOTA COUNTY TRANSPORTATION DEPARTMENT			
ENGINEERING DIVISION, CADASTRAL SECTION			
<b>20 YEAR PASS HAZARD LINE</b>			
AT BIG SARASOTA PASS			
DRAWN	BY	DATE	SUBMITTED
P.E. BROWN	P.E. BROWN	4-3-86	DATE
CHECKED		9-8-86	DIRECTOR, N.R.M.
COMPARED			DATE
REF. CO. ORD. 79-03, CO. ORD. 86-24		DATE	
SCALE 1" = 200'	PROJECT NO.	2031	
			SHEET 2 OF 4



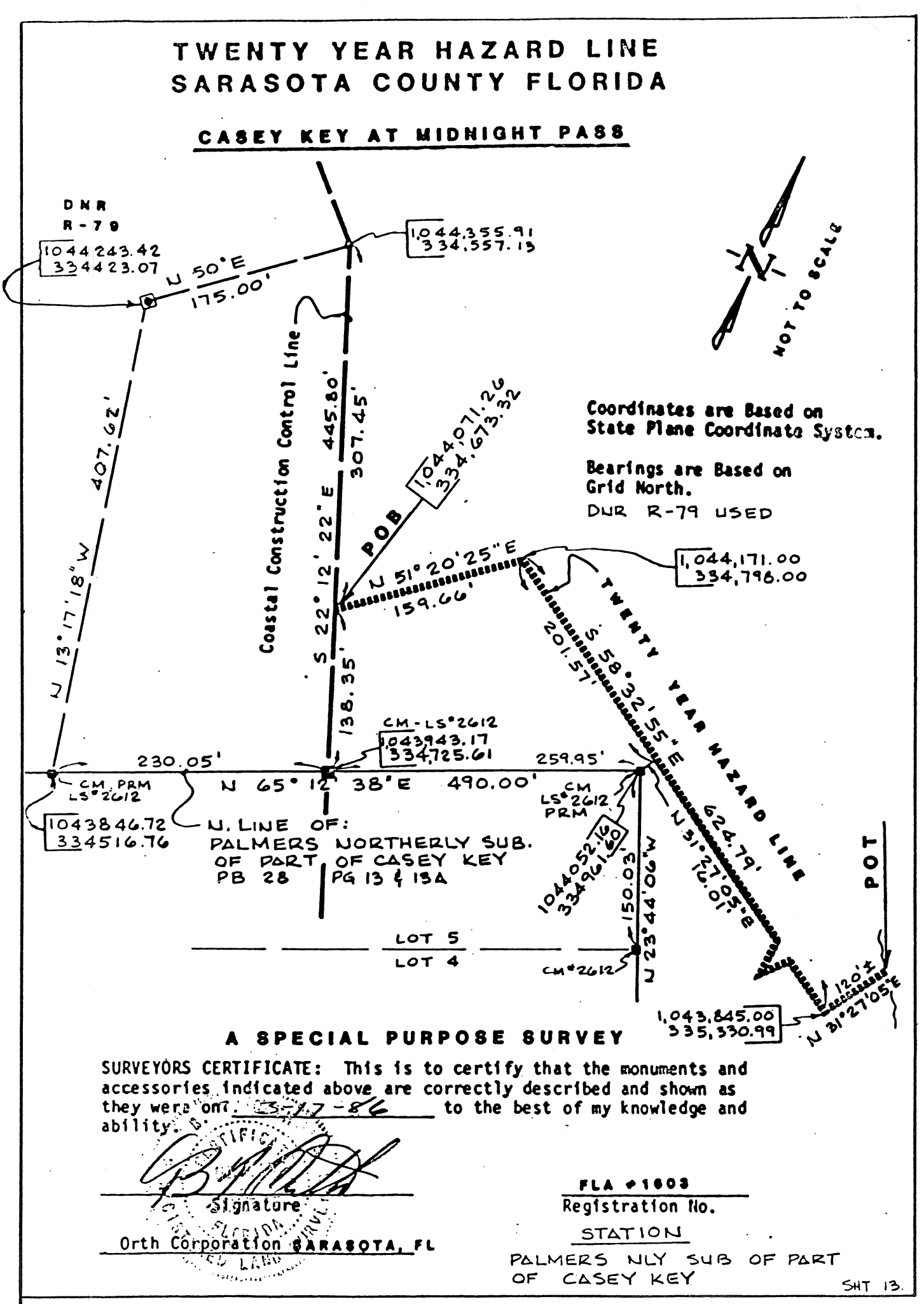
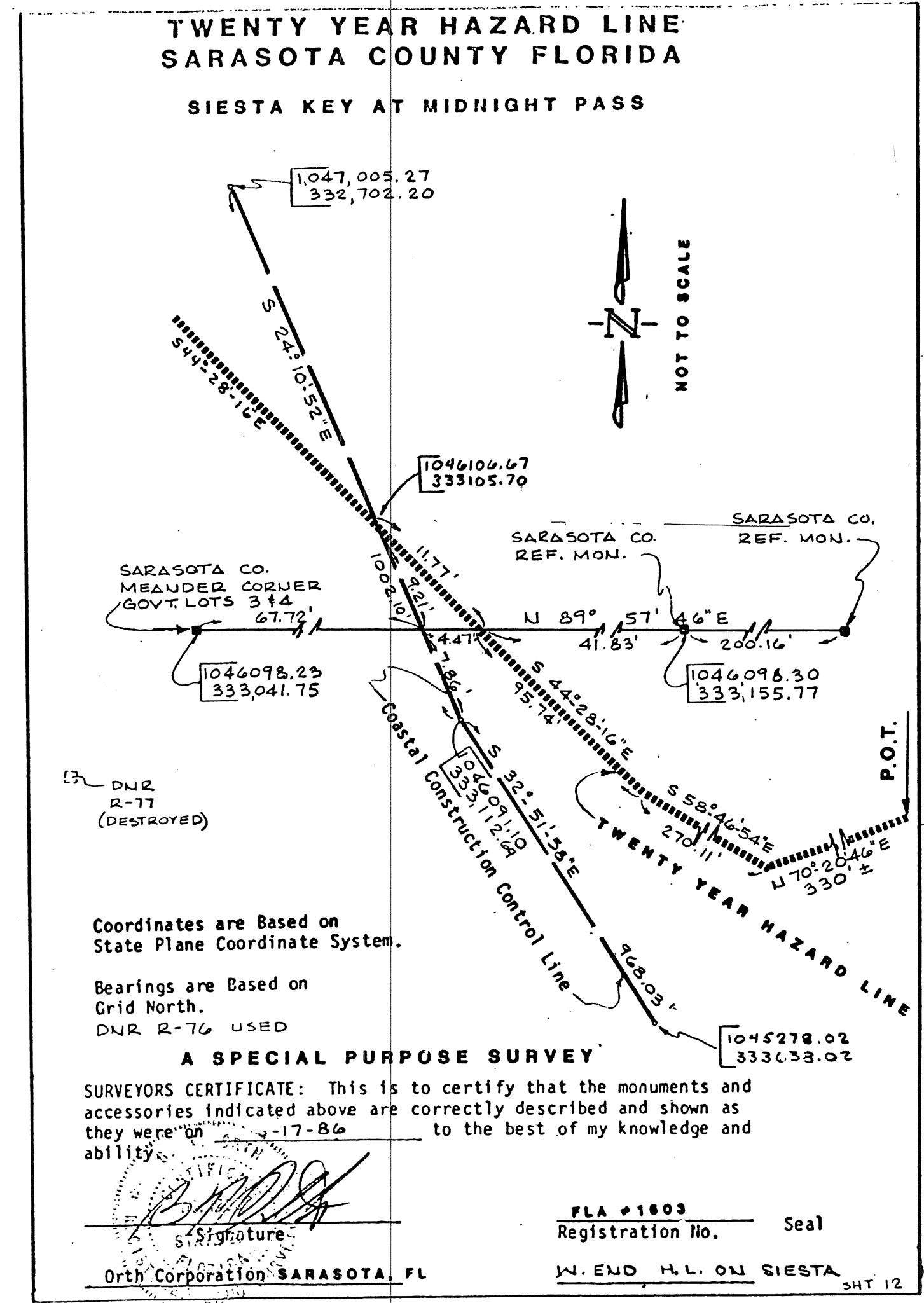
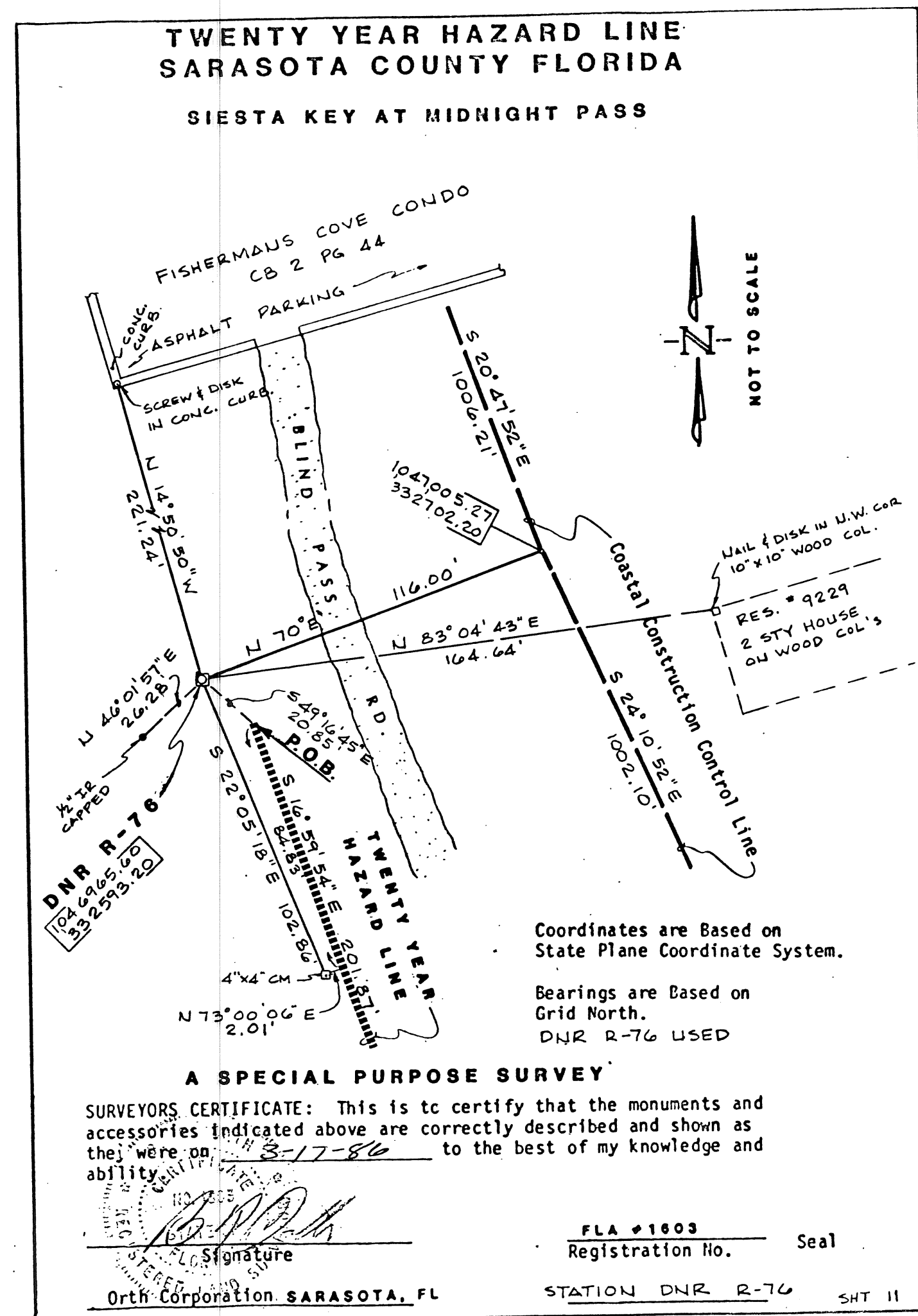
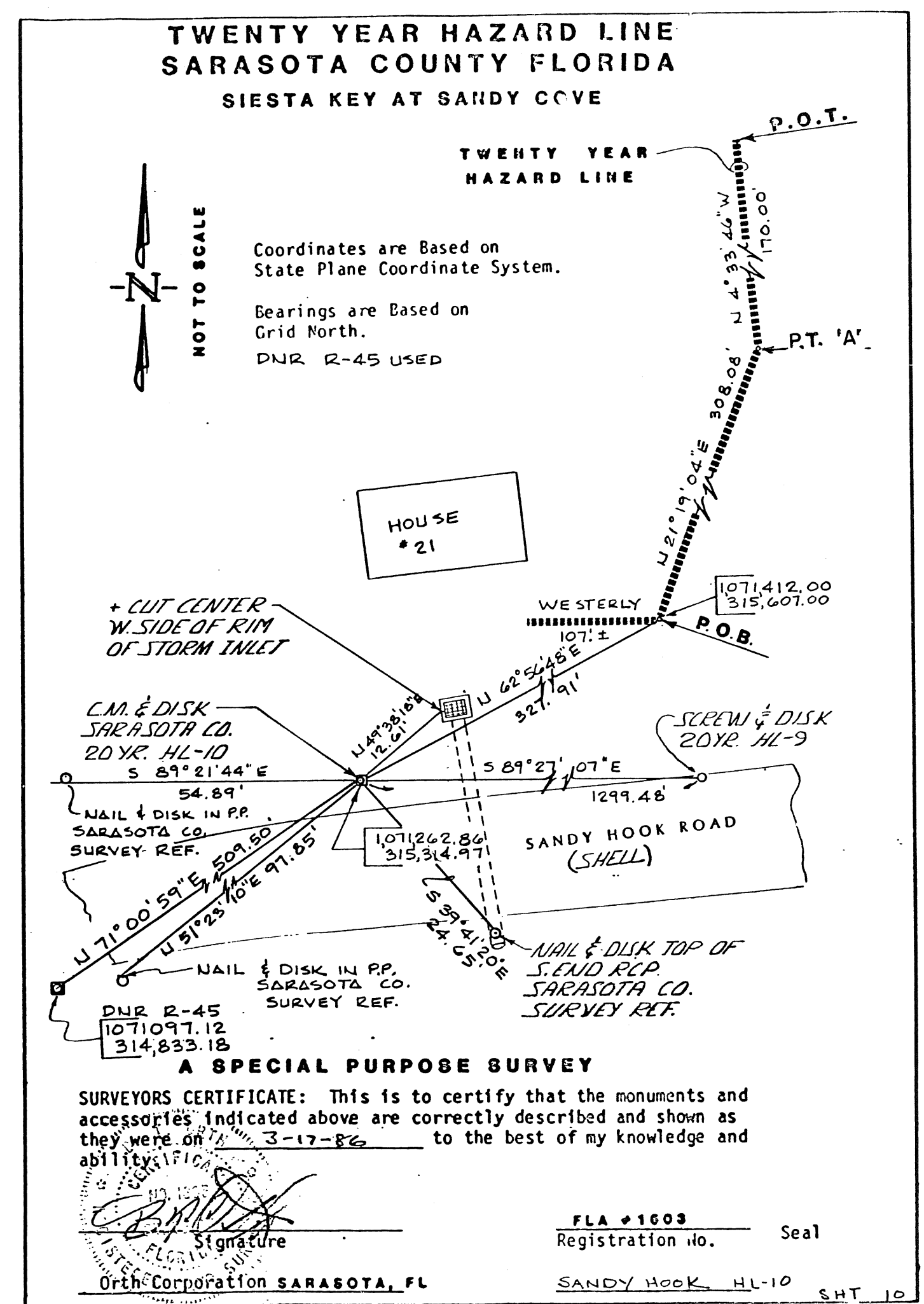
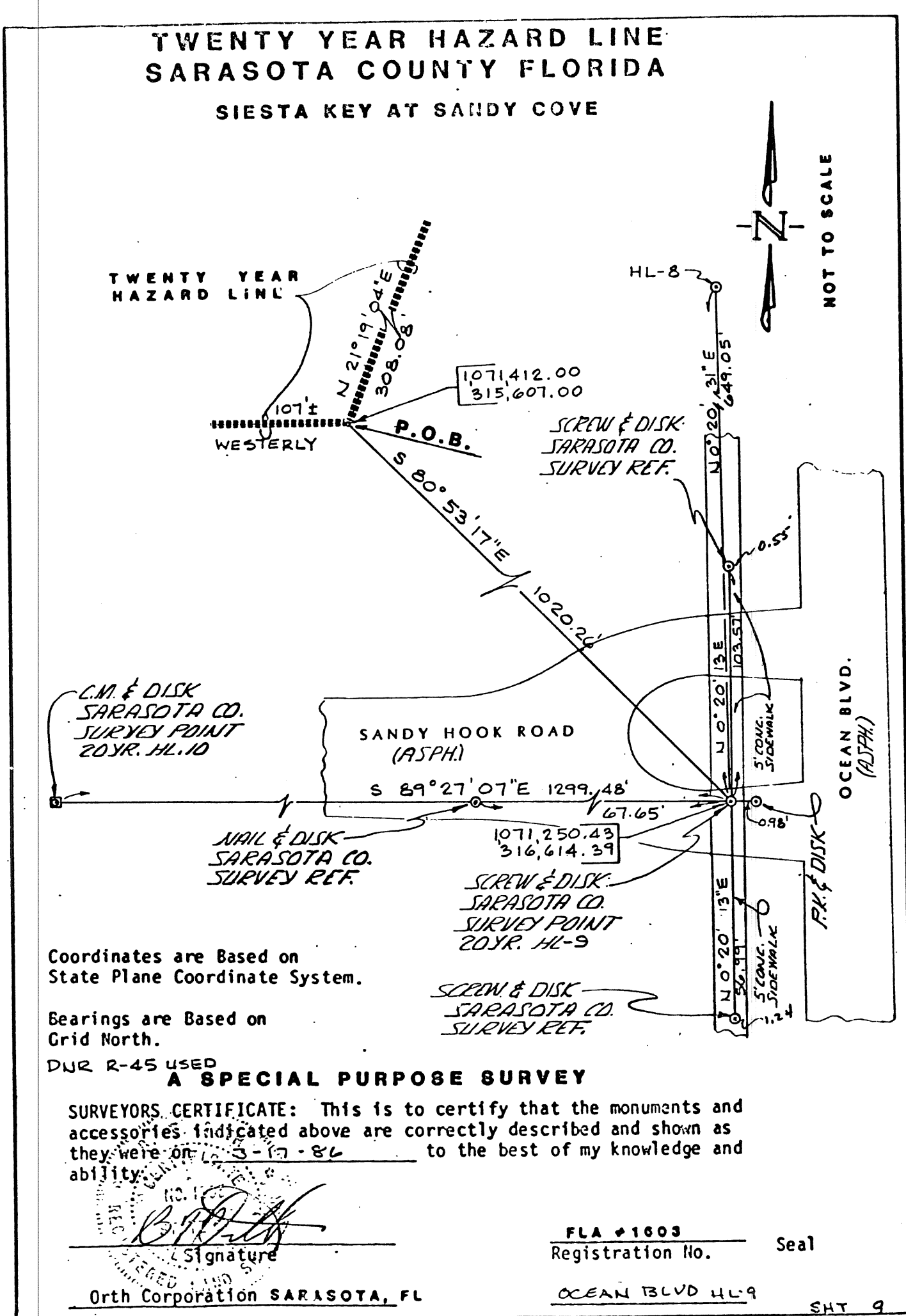
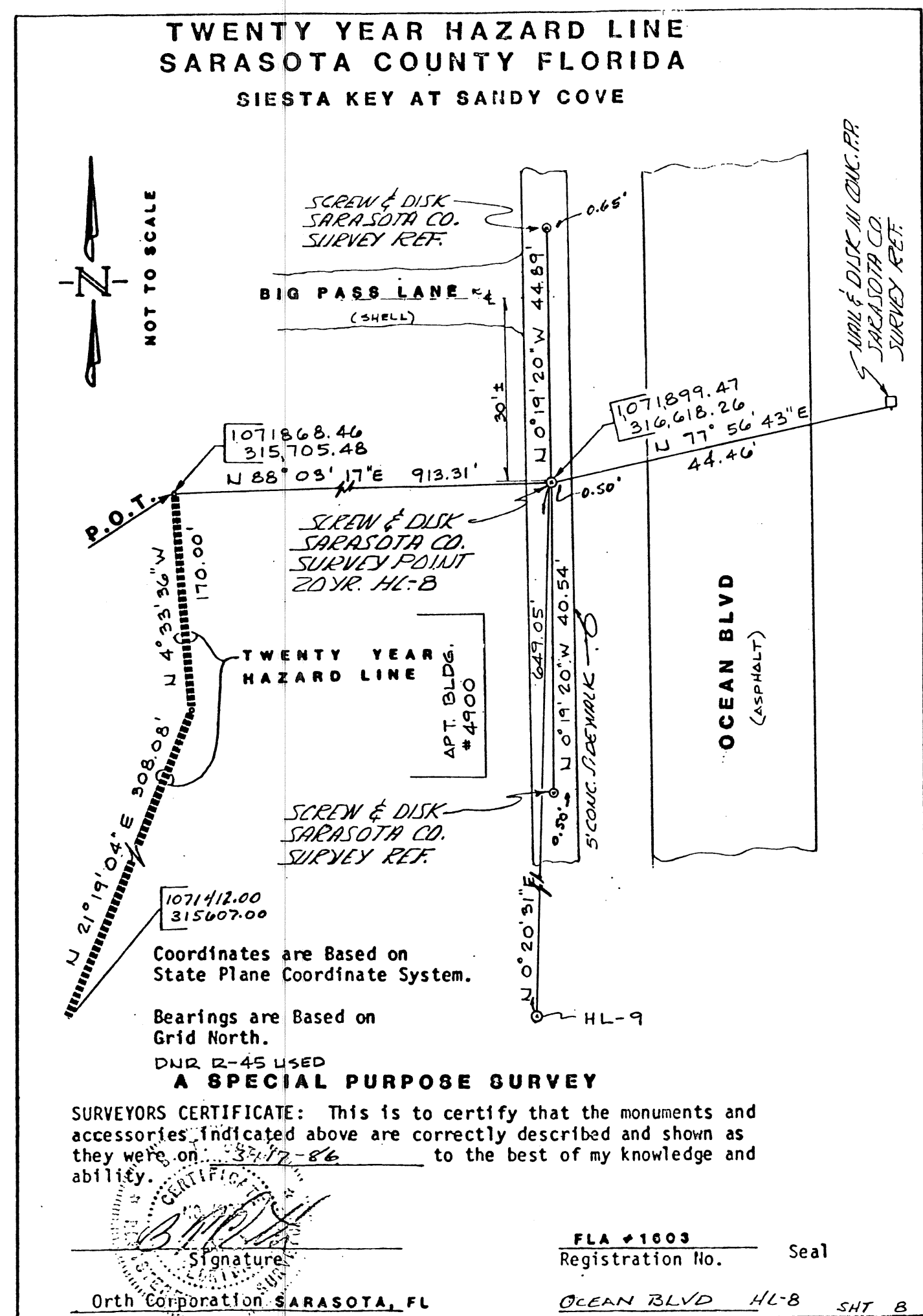
Reference Monument Details



SARASOTA COUNTY TRANSPORTATION DEPARTMENT ENGINEERING DIVISION, CADASTRAL SECTION			
<b>20 YEAR PASS HAZARD LINE</b>			
REFERENCE MONUMENT DETAILS			
DRAWN	BY	DATE	SUBMITTED [Signature] DATE
CHECKED	R	9-2-86	
COMPARED			
REF. CO. ORD. 79-03 CO. ORD. 86-24	DIRECTOR, N.R.M.		DATE
SCALE N.T.S.	PROJECT NO. 2031	SHEET 3 OF 4	



Reference Monument Details



SARASOTA COUNTY TRANSPORTATION DEPARTMENT ENGINEERING DIVISION, CADASTRAL SECTION			
<b>20 YEAR PASS HAZARD LINE</b>			
REFERENCE MONUMENT DETAILS			
DRAWN	BY	DATE	
CHECKED	P.E. BROWN	4-3-86	DATE
COMPARED		9-8-86	
REF. CO. ORD. 79-03	DIRECTOR, N.R.M.		DATE
CO. ORD. 86-24	A.S. [Signature]		9-11-86
SCALE	N.T.S.	PROJECT NO.	2031
			SHEET 4 of 4