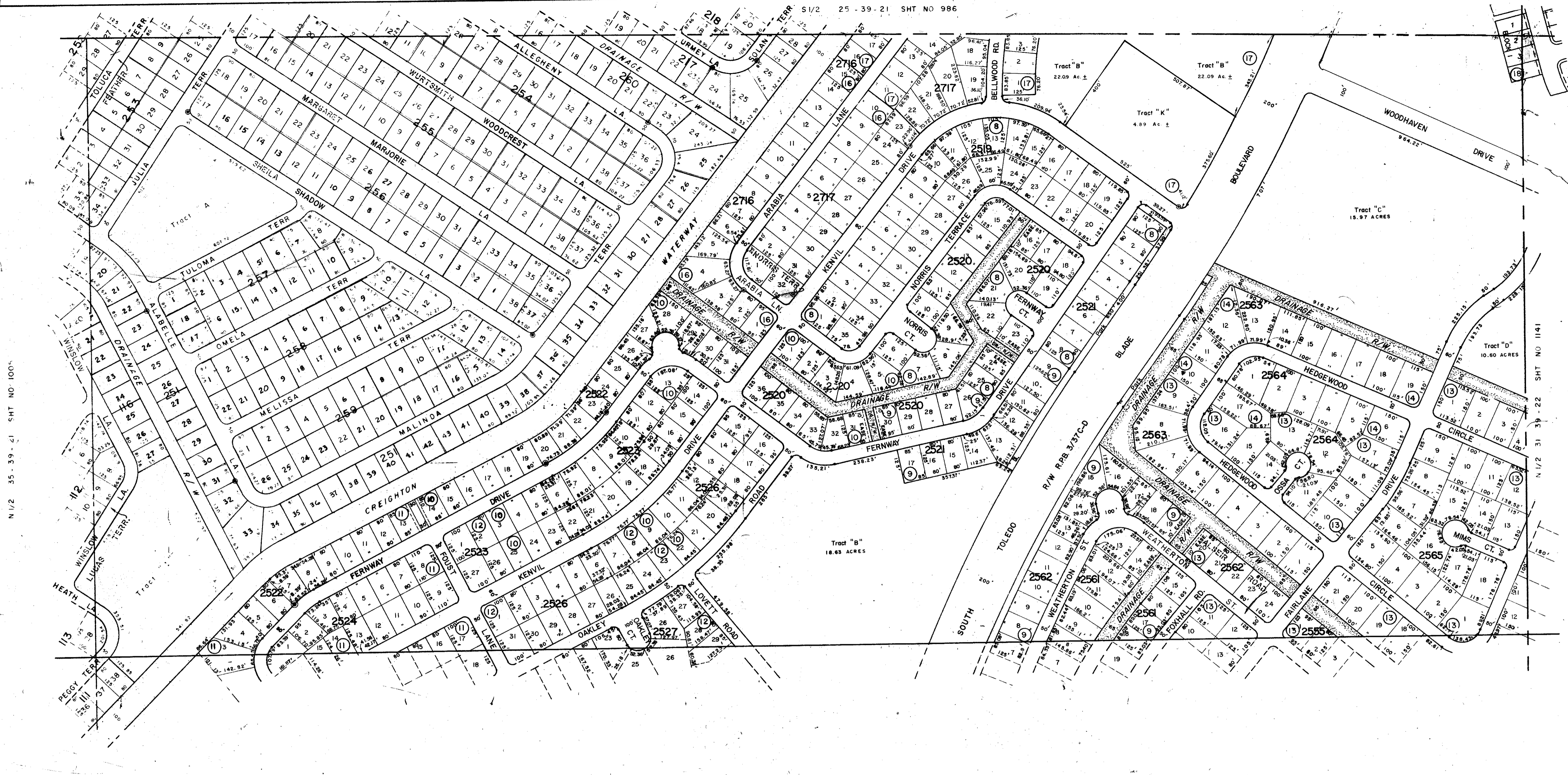


1007
N-36-39-21



N 1/2 35-39-21 SHT NO 100A

N 1/2 31-39-22 SHT NO 1141

S 1/2 36-39-21 SHT NO 100B

NOTE: 20' non-exclusive maintenance easement at the lot line or tract line abutting to and adjacent to all creeks, waterways or drainage rights of way, except as shown by dashed lines shown on the plat. Per. O.A. 1886/1823

SUBDIVISION INDEX

No	Name	ADD	Sht No	2	12/19 A
1	PORT CHARLOTTE 7th	ADD	Sht No	2	12/19 A
2	"	"	"	3	12/19 B
3	"	"	"	4	12/19 C
4	"	"	"	12	12/19 F
5	"	"	"	14	12/19 M
6	"	"	"	15	12/19 N
7	"	"	"	10	12/20 I
8	Port Charlotte 51st	Bth ADD	Sht No	2	21/8 A
9	"	"	"	3	21/8 B
10	"	"	"	4	21/8 C
11	"	"	"	5	21/8 D
12	"	"	"	6	21/8 E
13	"	"	"	16	21/8 O
14	"	"	"	17	21/8 P
15	Port Charlotte 54th	"	"	7	21/21 F
16	"	"	"	6	21/21 E
17	"	"	"	5	21/21 D
18	BOBCAT TRAILS	"	"	5	39/21

- LEGEND**
- Sec. Corner Monument
 - Permanent Reference Monument
 - Reference Point for Subdivisions
 - ① Subdivision Index Number
 - Drainage

ALTERATIONS		DATE	DESCRIPTION	J.A.M.
		Oct. 1974	Added Port Charlotte 51st. & 54th. ADD.	J.A.M.
		DEC. 1991	CHANGED STREET NAMES PER O.R. 2045/65	SOS
		SEP. 1991	ADDED TOLEDO BLVD. R/W R/R 3/37C-D	DSW

SARASOTA COUNTY FLORIDA
SCALE 1" = 200'

N 1/2 SECTION 36
TWP 39 S. RNG. 21 E



SHT. NO.
1007