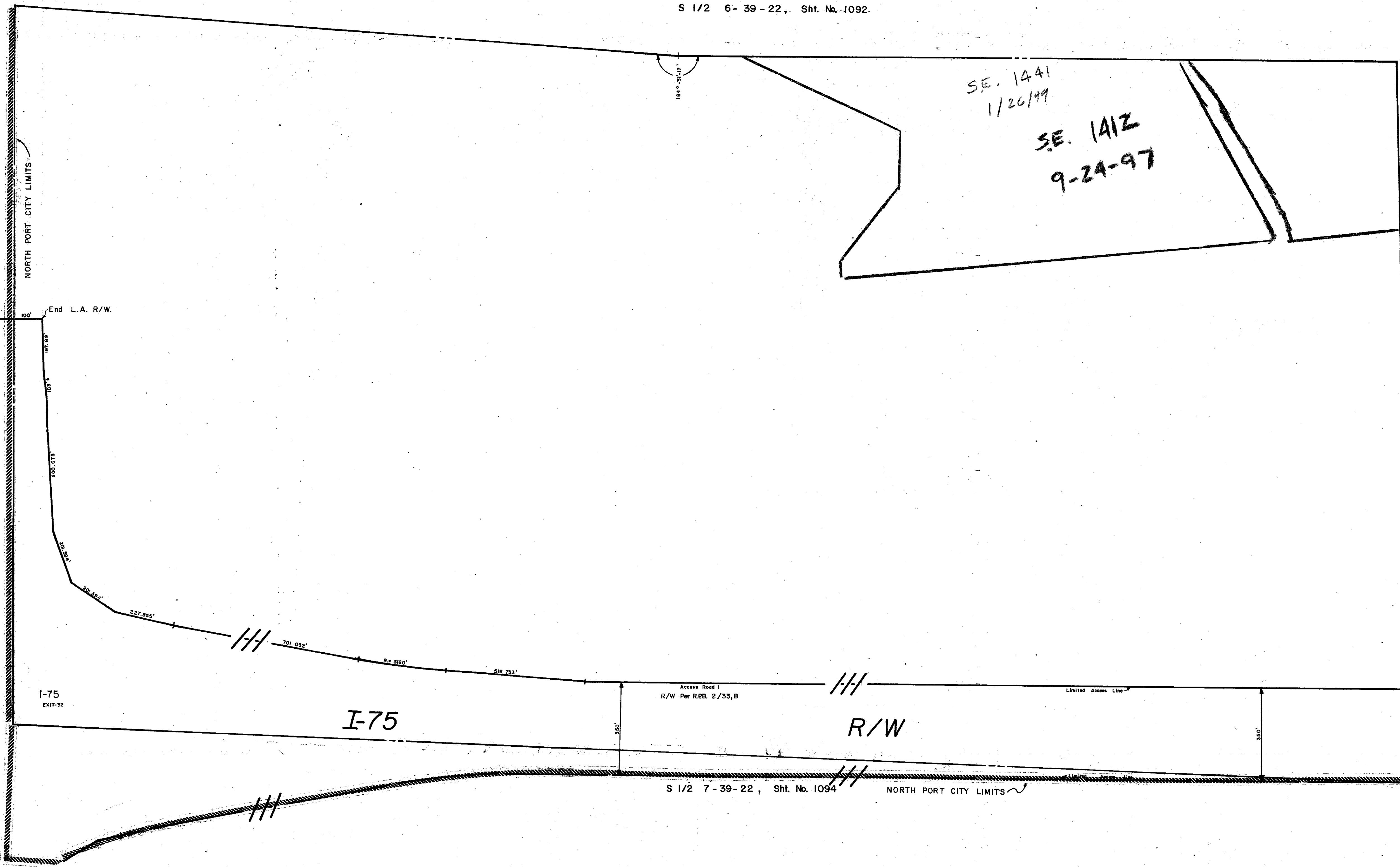


SE. 1441
1/26/99
SE. 1412
9-24-97

N 1/2 12-39-21, Sht. No. 959

N 1/2 8-39-22, Sht. No. 1095



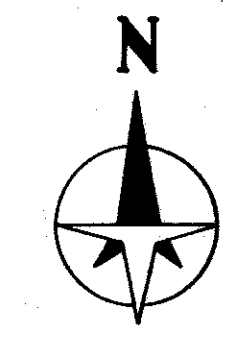
BRUNING 44-511 16772

- LEGEND:**
- County Section Corner Monument
 - County Bench Mark
 - Permanent Ref. Mon. for Subs.
 - ① Subdivision Index Number
 - D.O.T. Limited Access R/W

REVISIONS	
DATE	DESCRIPTION
FEB 1985	Redrawn, Added Section 1, 75 R/W per SRD Maps
FEB 1985	ADDED I-75 EXIT NO.

SARASOTA COUNTY, FLORIDA
Scale: 1" = 200' Date: DEC. 1973
Drawn By: J. L. D.

**N. 1/2 Section 7
Twp. 39 S. - Rge. 22 E.**



Sheet No. **1093**