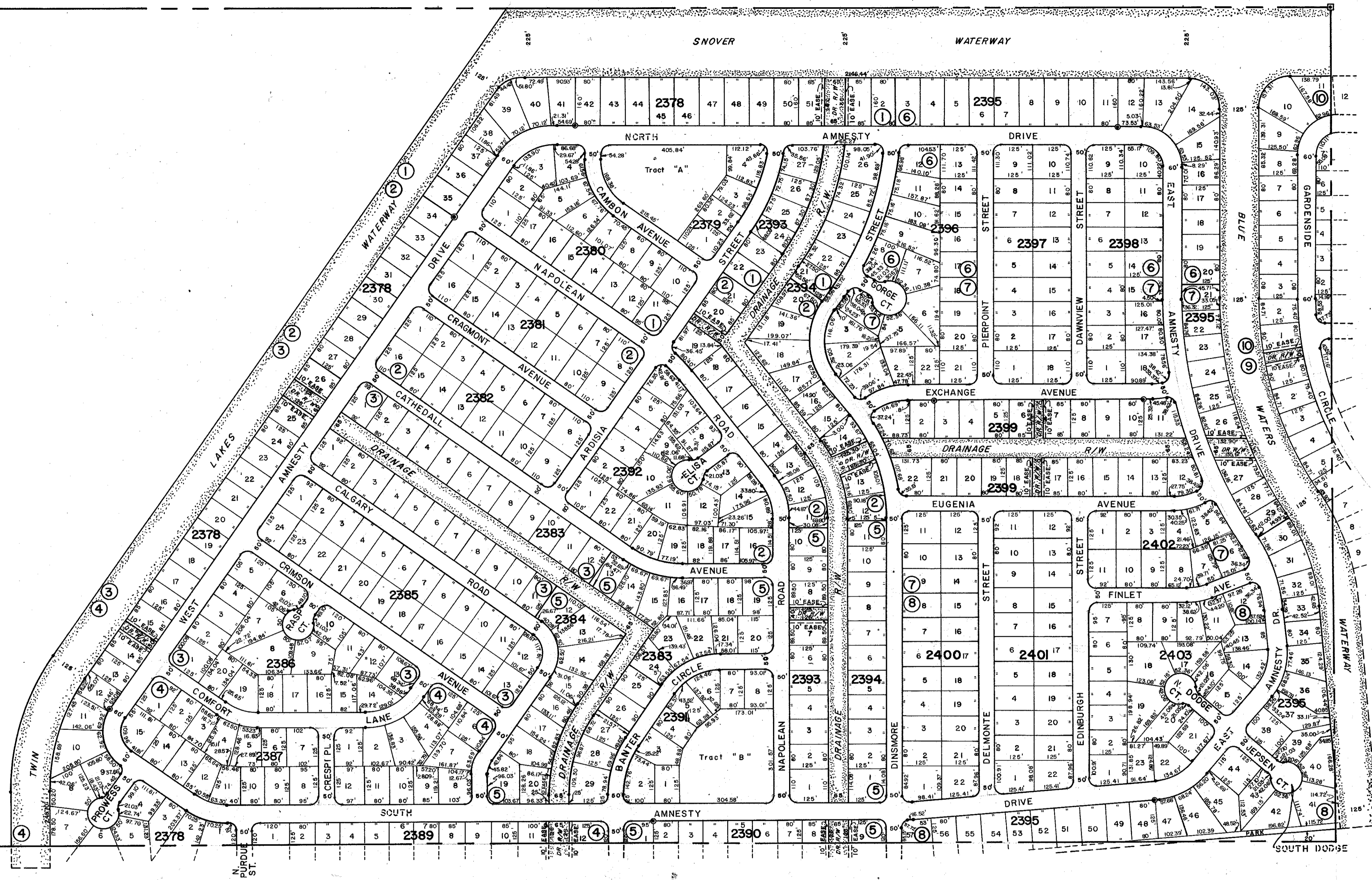


N 1/2 24-39-21, Sht. No. 983

N 1/2 20-39-22, Sht. No. 1119



SUBDIVISION	INDEX
1. Port Charlotte	49th Add. 21/1B
2. " "	" " 21/1C
3. " "	" " 21/1D
4. " "	" " 21/1E
5. " "	" " 21/1F
6. " "	" " 21/1G
7. " "	" " 21/1H
8. " "	" " 21/1I
9. " "	" " 21/1K
10. " "	" " 21/1L

- LEGEND:**
- County Section Corner Monument
 - Permanent Reference Monument
 - Reference Point for Subdivisions
 - ① Subdivision Index Number
 - Drainage

REVISIONS	
DATE	DESCRIPTION
DEC. 1990	CHANGED STREET NAMES PER O.R. 2045/95

SARASOTA COUNTY, FLORIDA
 Scale: 1" = 200' Date: Oct. 1974
 Drawn By: S.K.B.

N. 1/2 Section 19
Twp. 39S. - Rge. 22E.

Sheet No. **1117**

NOTE: 20' non-exclusive maintenance easement at the lot line or tract line abutting to and adjacent to all creeks, waterways or drainage rights of way, except as shown by dashed lines shown on the plat, Per. O.R. 1886/1823

