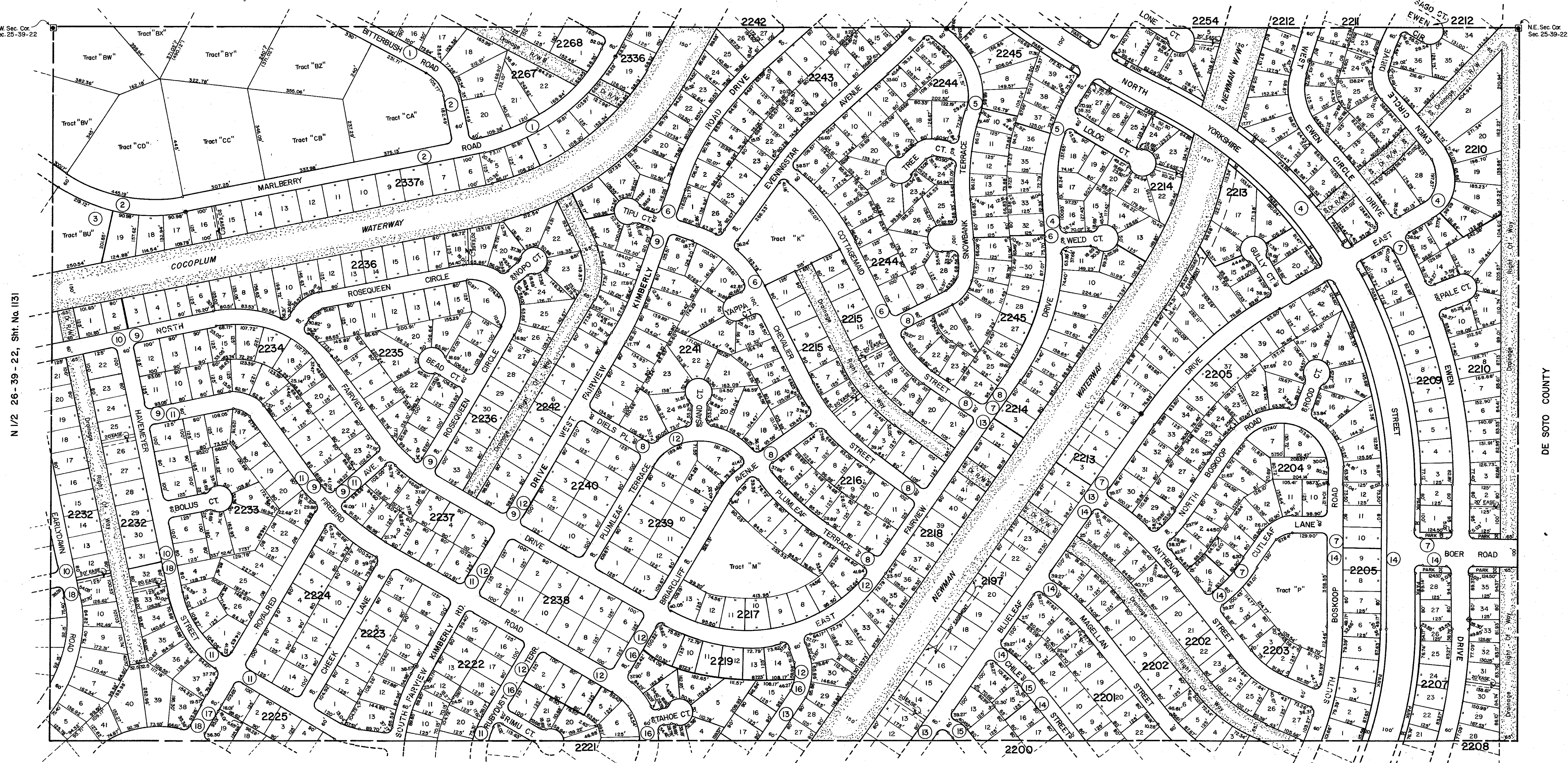


NW Sec. Cor. Sec. 25-39-22

NE Sec. Cor. Sec. 25-39-22



N 1/2 26-39-22, Sht. No. 1131

DE SOTO COUNTY

SUBDIVISION INDEX

1	Part Charlotte, 47th. Add.	19/46	CC
2	"	19/46	DD
3	"	19/46	EE
4	Part Charlotte, 46th. Add.	19/45	H
5	"	19/45	I
6	"	19/45	J
7	"	19/45	K
8	"	19/45	L
9	"	19/45	M
10	"	19/45	N
11	"	19/45	O
12	"	19/45	P
13	"	19/45	Q
14	"	19/45	R
15	"	19/45	T
16	"	19/45	U
17	"	19/45	V
18	"	19/45	W

LEGEND:

- County Section Corner Monument
- County Bench Mark
- Permanent Ref. Mon. for Subs.
- ① Subdivision Index Number

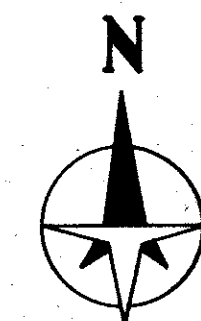
REVISIONS

DATE	DESCRIPTION	SDS
DEC. 1990	CHANGED STREET NAMES PER O.R. 2045/65	SDS

SARASOTA COUNTY, FLORIDA

Scale: 1" = 200' Date: Mar. 1974
Drawn By: J. L. D. & L. J. T.

NOTE: 20' non-exclusive maintenance easement at the lot line or tract line abutting to and adjacent to all creeks, waterways or drainage rights of way, except as shown by dashed lines shown on the plat. Per. O.R. 1686/1623



Sheet No.

**N. 1/2 Section 25
Twp. 39 S. Rge. 22 E.**

1129